



Iron King Mine & Humboldt Smelter Superfund Site

U.S. Environmental Protection Agency • Region 9 • San Francisco, CA • October 2009

Investigation Report Due This Winter EPA and ADEQ Booth at Agua Fria Festival

The U.S. Environmental Protection Agency (EPA), working in conjunction with the Arizona Department of Environmental Quality (ADEQ), conducted an investigation of the Iron King Mine – Humboldt Smelter Superfund Site. EPA will release the results of the investigation in a document called the Remedial Investigation (RI) Report.

On October 10, 2009, EPA and ADEQ will staff a booth at the Dewey-Humboldt Agua Fria Festival. At the booth, EPA will have information about the sampling effort, the Superfund cleanup process, and environmental education items. EPA and ADEQ staff will be there to answer questions.

EPA and ADEQ Booth at Agua Fria Festival

**October 10, 2009
9:00 AM – 5:00 PM**

Main Street, Historic Humboldt

Cleanup Investigation Update

Over the past year, EPA, working in conjunction with ADEQ, conducted the following investigation activities:

- Collected over a thousand soil samples in the mine and smelter areas, residential yards, and the Humboldt Elementary School
- Collected background data for site contaminants
- Conducted water quality monitoring at six new groundwater monitoring wells and over 50 private well and tap water locations
- Conducted a storm water evaluation
- Developed volume estimates for waste and tailings piles
- Collected surface water samples along the Agua Fria River, the Galena Gulch, and the Chaparral Gulch
- Conducted air monitoring at four stations across the site for approximately one year
- Conducted an Ecological Habitat Survey
- Conducted a Cultural Resource and Historic Building Survey
- Conducted a Wetlands Assessment
- Collaborated with the University of Arizona on three site research projects (ongoing)
- Initiated a Reuse Assessment (ongoing)

A schematic of the major components of the Remedial Investigation (RI) is presented in Figure 1. EPA and ADEQ are currently developing the RI Report, which will be available for the public this winter. This report summarizes the results of the field activities to characterize the nature and extent of contamination, the fate and transport of contaminants, and the results of the human health and ecological risk assessments.

Copies of the RI Report will be available at the Information Repository at the Dewey-Humboldt Town Library and online. EPA and ADEQ will send out a RI Factsheet to the email and mailing lists that summarizes the findings of the investigation and announces the RI public meeting. During this meeting, EPA will present the contents and main conclusions of the RI.

What Happens After the Remedial Investigation?

Data collected during the RI influences the development of cleanup options for the Site. The detailed analysis of potential cleanup options is called the Feasibility Study (FS). During the FS, the advantages and disadvantages of each cleanup method are explored. EPA, working in conjunction with ADEQ, will propose a recommended cleanup option for the Site in the Proposed Plan, which is accompanied with a minimum 30-day public comment period.

Chaparral Gulch Advisory

EPA recommends that residents limit or avoid contact with soils and any water in the Chaparral Gulch. This precautionary advice is meant to reduce human exposure to arsenic contamination in this area.

Environmental Exposure Resources

The Agency for Toxic Substances and Disease Registry is the federal public health agency whose mission is to prevent adverse human health effects that result from hazardous waste exposure.

How can you tell if you've been exposed?

- First, ask your health care provider to take an exposure history. A document on how to take an exposure history is available at http://www.atsdr.cdc.gov/HEC/CSEM/exphistory/docs/exposure_history.pdf.
- For some chemicals, blood or urine sampling can tell if you have been exposed. Ask your health care provider if he or she can do these tests or recommend where you could go to have them done.
- Your health care provider will need some specific information about the possible environmental exposure. Without that information, your health care provider may not be able to tell you what your testing results mean.
- Contact the EPA Project Manager (see back page) who will put you in contact with Dr. Sophia Serda, EPA toxicologist, for site-specific information about the site contaminants, potential routes of exposure, and potential adverse health effects.

Elevated levels of the following metals are present at the Site

- » Arsenic
- » Lead

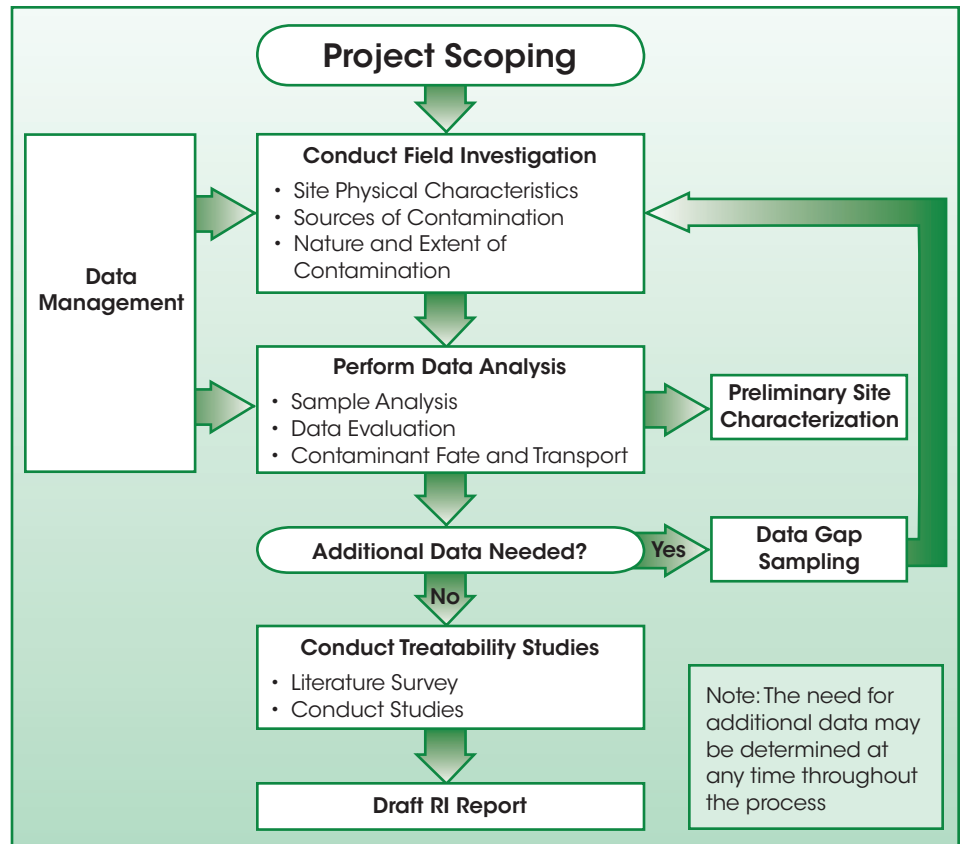


Figure 1: Schematic of the major components of the Remedial Investigation

Community Information Resources Available

EPA and ADEQ has a number of ways for the community to become more knowledgeable about and involved with the Iron King Mine – Humboldt Smelter Superfund Site.

Community Involvement Plan

The Iron King Mine – Humboldt Smelter Superfund Site Community Involvement Plan provides a detailed explanation of how EPA and ADEQ will encourage public participation in the cleanup decision-making process. It is a flexible plan that organizes both EPA's and ADEQ's efforts but can change based on new community needs. A copy will be located at the Dewey-Humboldt Town Library. Below are a few of the resources that are discussed in the plan.

Information Repository

An Information Repository is a place where EPA provides copies of many of its current cleanup documents. EPA uses the Dewey-Humboldt Town Library for this task. Some documents are available as hard copies and others are available on CD. You can ask the librarian for assistance. EPA will update the repository as documents are produced.

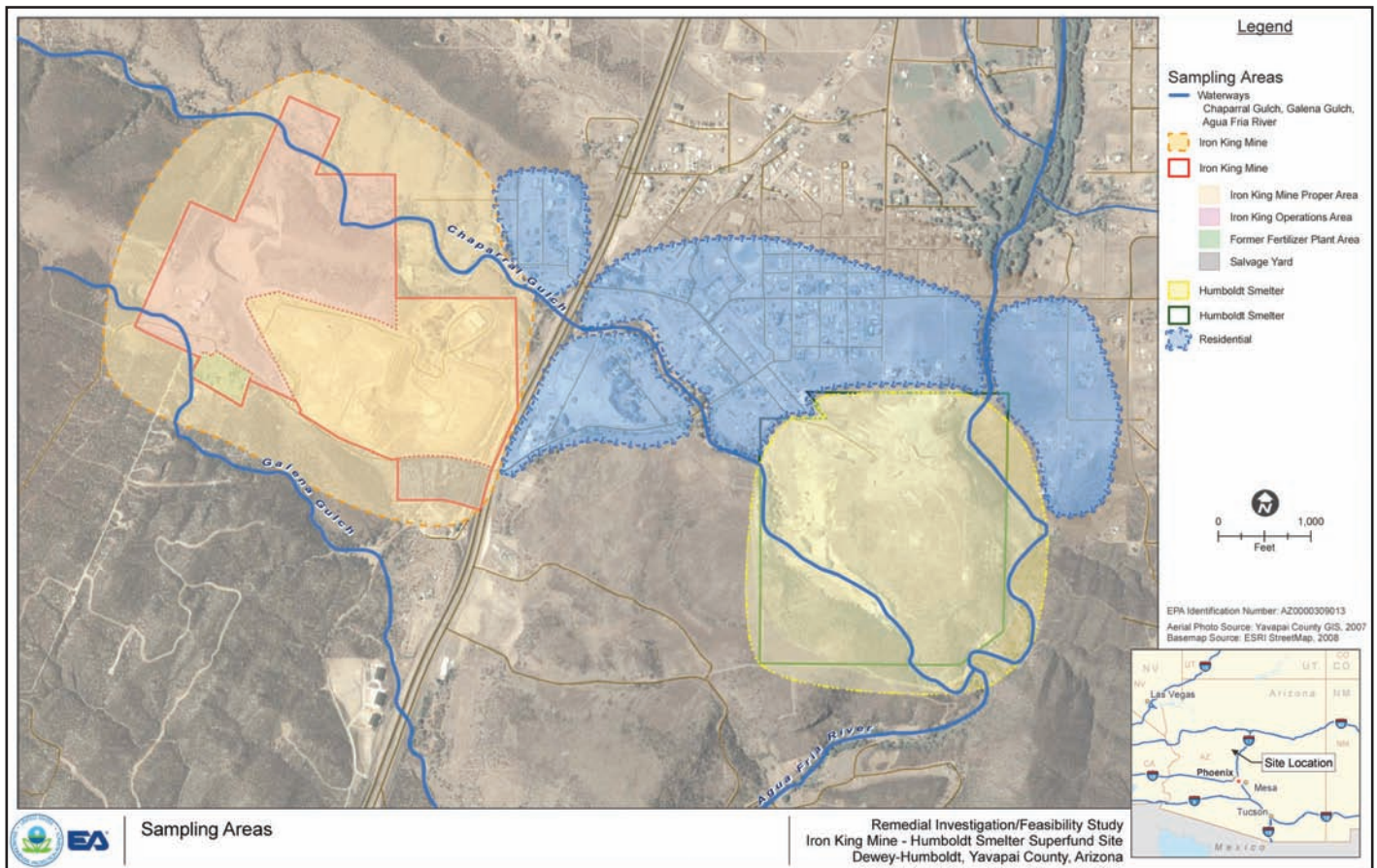


Figure 2: Iron King Mine - Humboldt Smelter Site Sampling Areas

Web Sites

EPA has placed a number of technical and general public documents on its website: <http://www.epa.gov/region09/ironkingmine>. These include: air monitoring reports, the “Cultural Resource and Historic Building Survey,” the overview “Reusing Superfund Sites,” maps, and other fact sheets.

Additional information is available on ADEQ’s website: <http://www.azdeq.gov/enviro/waste/sps/state.html>.

Technical Assistance Grant Available

EPA offers a Technical Assistance Grant (TAG) to a community affected by a Superfund site by providing money for activities to help the community participate in decision making. An initial grant up to \$50,000 is available to a qualified community group so they can contract with an independent technical advisor to interpret and help the community understand technical information about their site.

After the independent technical advisor reviews the site-related documents, the advisor can help the community form its issues and concerns, and communicate them effectively to EPA.

To qualify, the TAG recipient must be or become an incorporated non-profit organization. EPA can pay for the costs of incorporation. The group must establish a bank account to receive the funds and create a record of how they spent the funds. EPA staff are available to help a group through the application process. Interested community members may contact David Cooper (see back page) for more information.

Community Advisory Group

A Community Advisory Group is an on-going stakeholder forum where individuals or those representing groups meet together to learn more about the Superfund cleanup process and the status of work, and to provide information, issues and concerns to EPA and ADEQ. Membership in the group does not require a technical background.

The CAG is a self-forming and voluntary group. Although EPA and ADEQ do not manage the group, EPA can provide limited support, such as making copies, providing documents, rental meeting rooms, paying for meeting notices, etc. The biggest advantage of a CAG is that it meets regularly and at intervals that are usually far more frequent than EPA’s event-driven meetings. In this way, attendees can get the latest information and can talk directly to EPA and ADEQ representatives.

Iron King Mine & Humboldt Smelter Site

Investigation Report Due Winter 2009

EPA Booth at Agua Fria Festival

Contact Information

If you have questions or concerns, please contact any of the following individuals:

EPA Contacts

Leah Butler

Project Manager (SFD-6-2)
(415) 972-3199
butler.leah@epa.gov

David Cooper

Community Involvement
Coordinator (SFD-3)
(415) 972-3245
toll free (800) 231-3075
cooper.david@epa.gov

ADEQ Contacts

Brian Stonebrink

Project Manager
(602) 771-4197
stonebrink.brian@azdeq.gov

Felicia Calderon

Community Involvement
Coordinator
(602) 771-4167
calderon.felicia@azdeq.gov

Information Repository

For site documents, please visit the information repository at:

Dewey-Humboldt Town Library

2735 S. Corral Street
Dewey-Humboldt, AZ

Please visit the Iron King Mine and Humboldt Smelter Site website at:

<http://www.epa.gov/region09/ironkingmine>



Printed on 30% Postconsumer Recycled/Recyclable Paper

United States Environmental Protection Agency
Region 9
75 Hawthorne Street (SFD-6-3)
San Francisco, CA 94105
Attn: David Cooper (IKHS 10/09)

FIRST-CLASS MAIL
POSTAGE & FEES
PAID
U.S. EPA
Permit No. G-35

*Official Business
Penalty for Private Use, \$300*

Address Service Requested