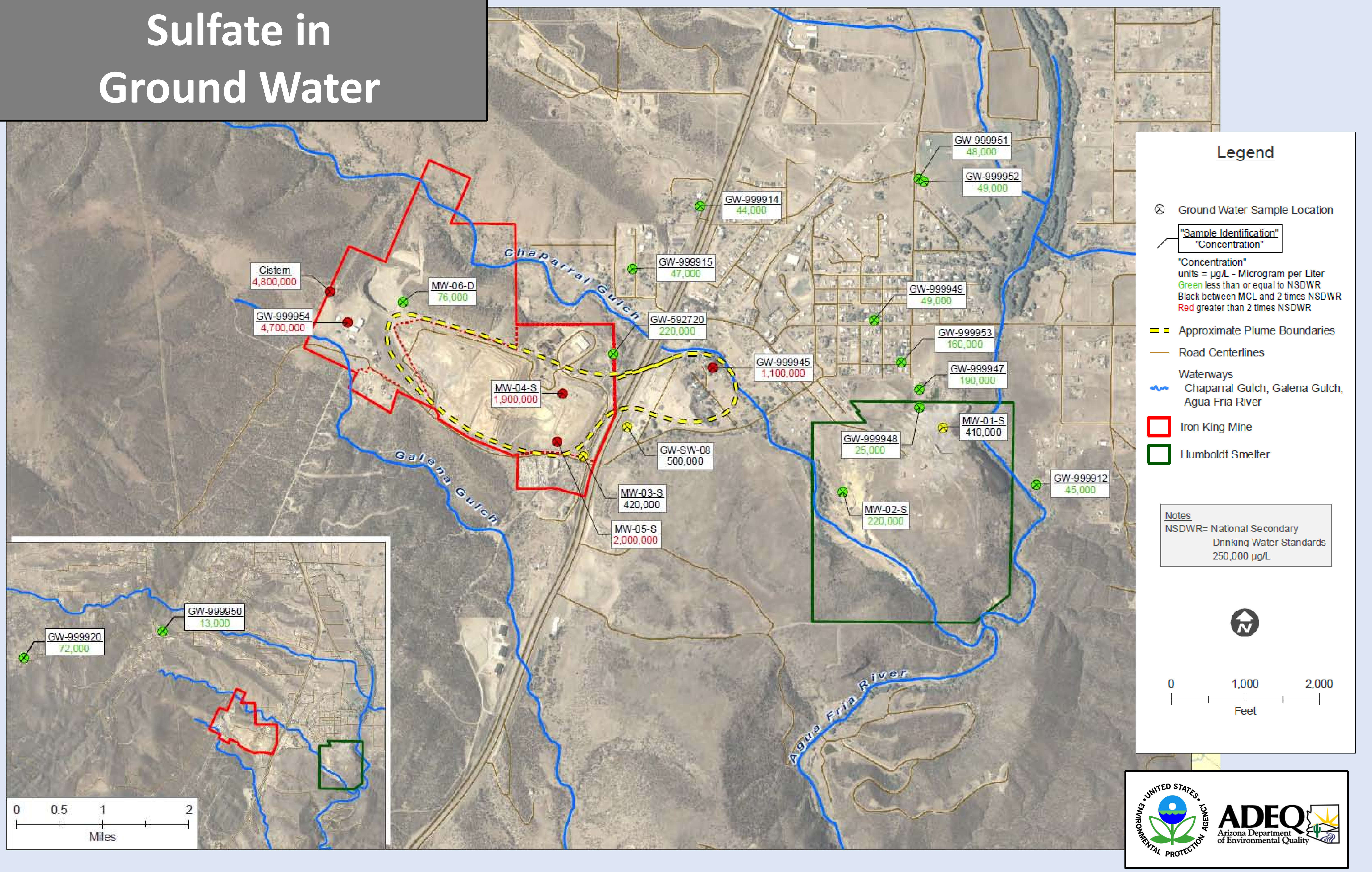


Sulfate in Ground Water

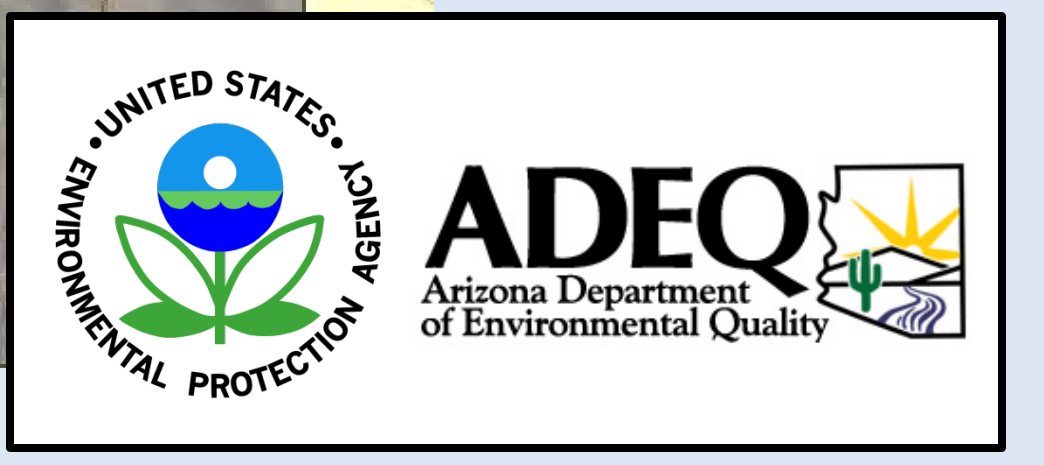


Legend

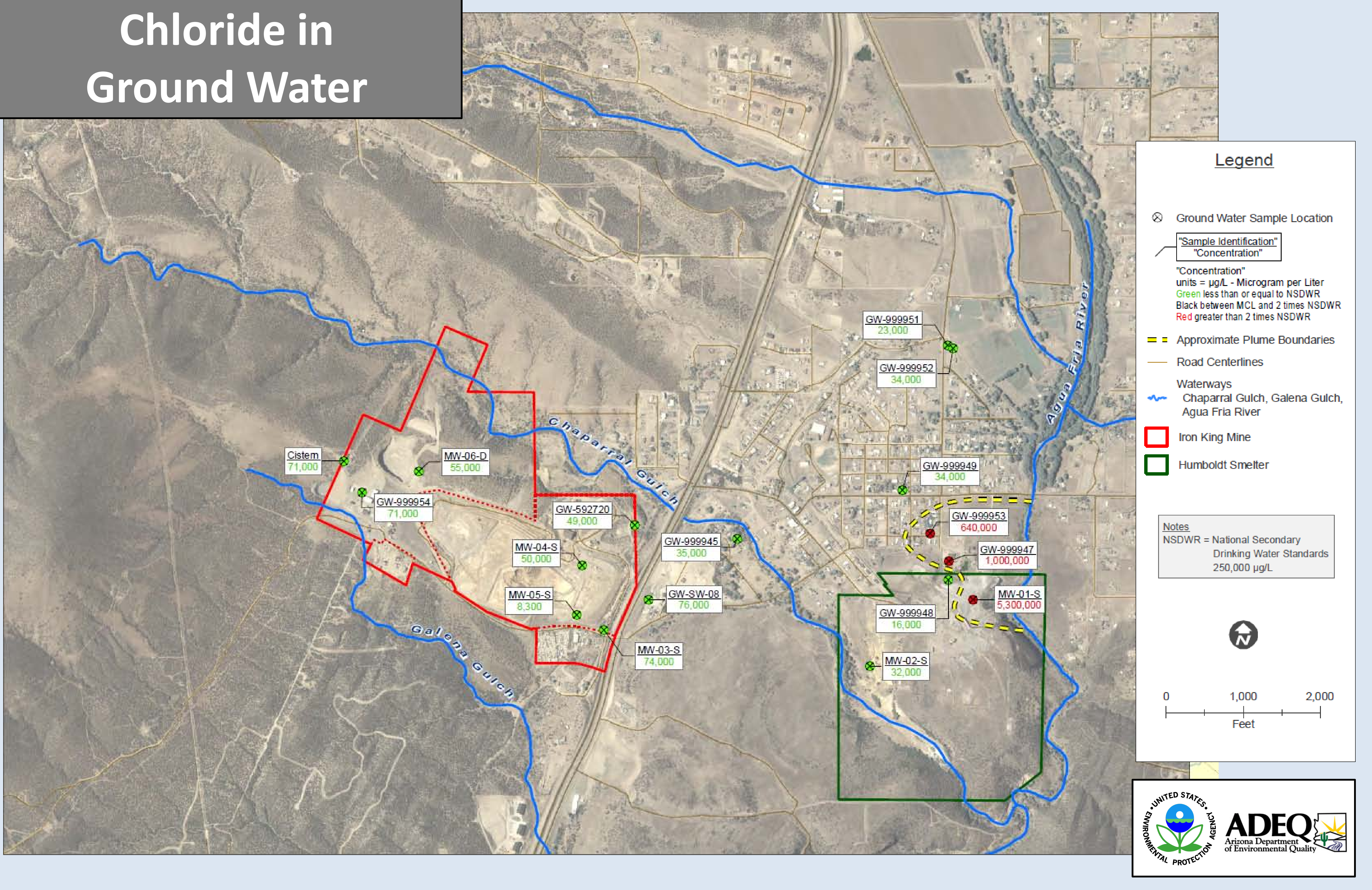
- ⊗ Ground Water Sample Location
- "Sample Identification"
"Concentration"
- "Concentration" units = µg/L - Microgram per Liter
Green less than or equal to NSDWR
Black between MCL and 2 times NSDWR
Red greater than 2 times NSDWR
- - - Approximate Plume Boundaries
- Road Centerlines
- Waterways
Chaparral Gulch, Galena Gulch, Agua Fria River
- Iron King Mine
- Humboldt Smelter

Notes
NSDWR= National Secondary Drinking Water Standards
250,000 µg/L

0 1,000 2,000
Feet



Chloride in Ground Water



Legend

- ⊗ Ground Water Sample Location
- "Sample Identification"
"Concentration"
- "Concentration" units = µg/L - Microgram per Liter
Green less than or equal to NSDWR
Black between MCL and 2 times NSDWR
Red greater than 2 times NSDWR
- - - Approximate Plume Boundaries
- Road Centerlines
- Waterways
Chaparral Gulch, Galena Gulch, Agua Fria River
- Iron King Mine
- Humboldt Smelter

Notes
NSDWR = National Secondary Drinking Water Standards
250,000 µg/L

0 1,000 2,000
Feet

