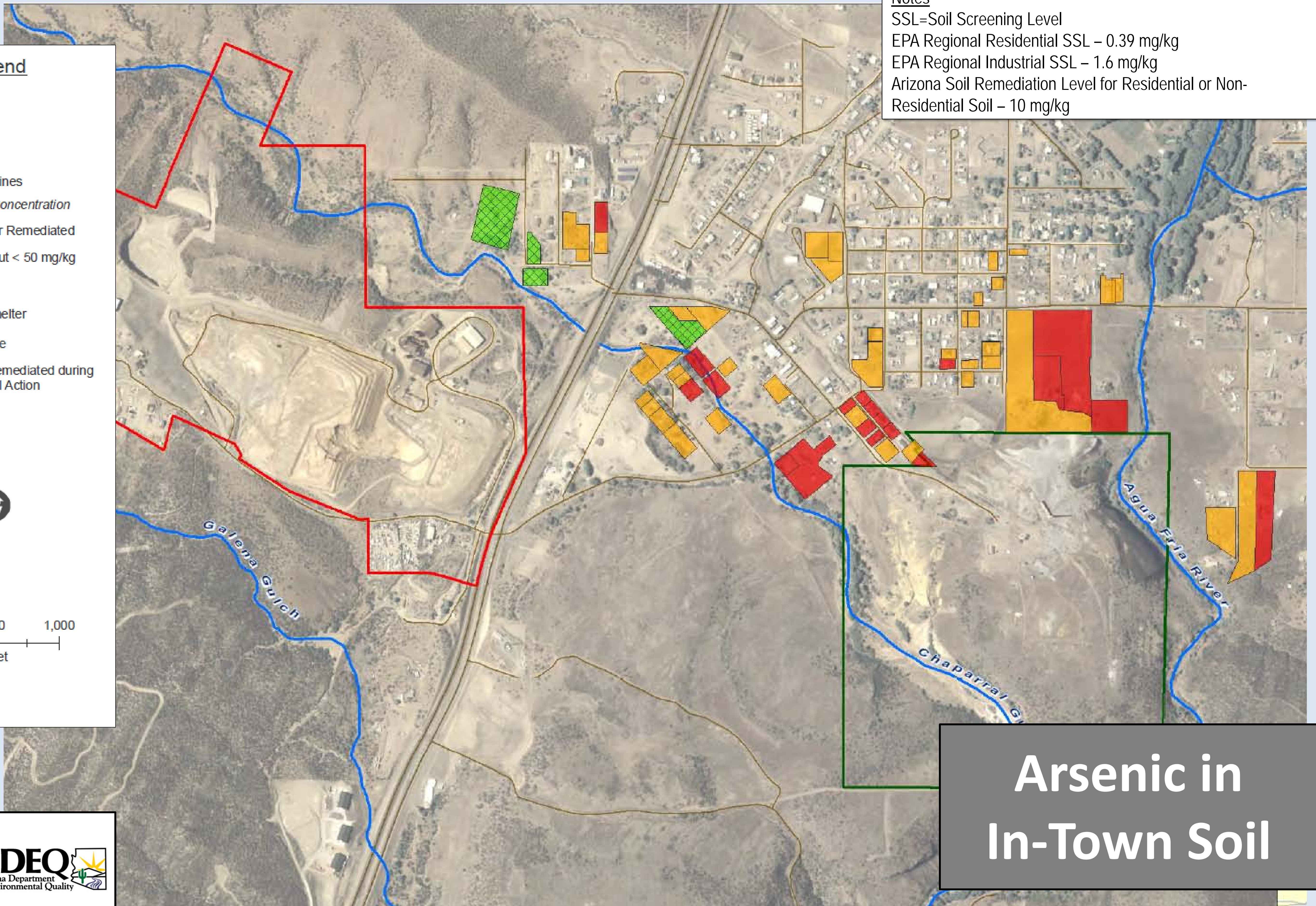


Notes
 SSL=Soil Screening Level
 EPA Regional Residential SSL – 0.39 mg/kg
 EPA Regional Industrial SSL – 1.6 mg/kg
 Arizona Soil Remediation Level for Residential or Non-Residential Soil – 10 mg/kg

Legend

- Road Centerlines
- Average Arsenic Concentration**
- Green: < 10 mg/kg or Remediated
- Yellow: > 10 mg/kg but < 50 mg/kg
- Red: > 50 mg/kg
- Green outline: Humboldt Smelter
- Red outline: Iron King Mine
- Grid pattern: Properties Remediated during EPA Removal Action

North arrow and scale bar (0, 500, 1,000 Feet)



Arsenic in In-Town Soil

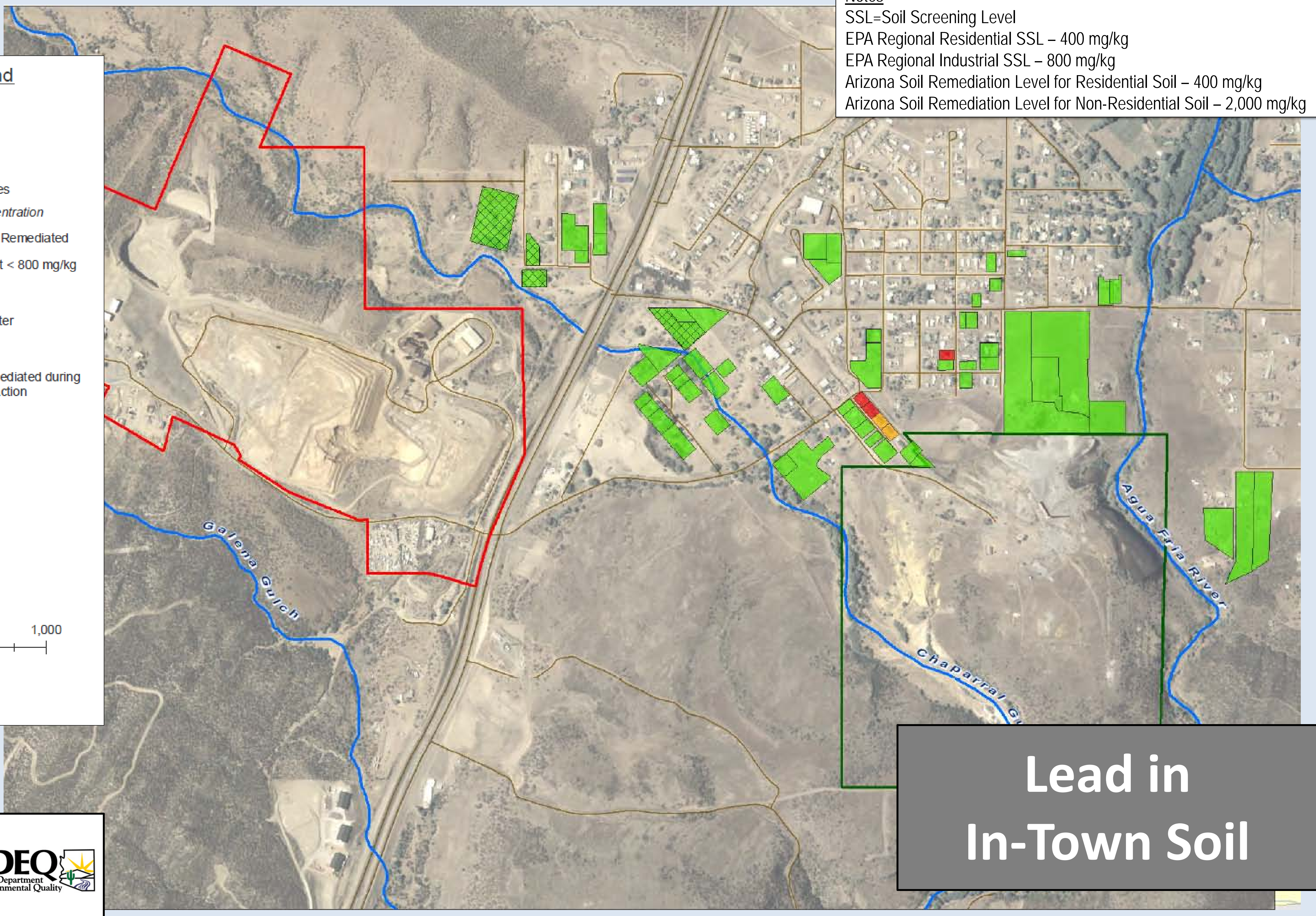


Notes
 SSL=Soil Screening Level
 EPA Regional Residential SSL – 400 mg/kg
 EPA Regional Industrial SSL – 800 mg/kg
 Arizona Soil Remediation Level for Residential Soil – 400 mg/kg
 Arizona Soil Remediation Level for Non-Residential Soil – 2,000 mg/kg

Legend

- Road Centerlines
- Average Lead Concentration**
- Green: < 400 mg/kg or Remediated
- Yellow: > 400 mg/kg but < 800 mg/kg
- Red: > 800 mg/kg
- Green outline: Humboldt Smelter
- Red outline: Iron King Mine
- Grid pattern: Properties Remediated during EPA Removal Action

North arrow and scale bar (0, 500, 1,000 Feet)



Lead in In-Town Soil

