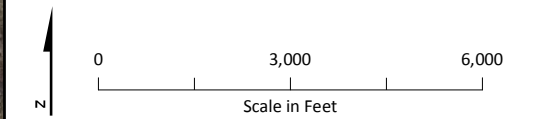




**LEGEND**

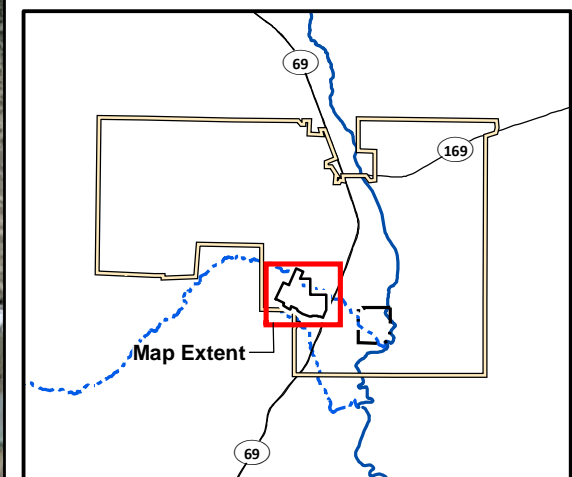
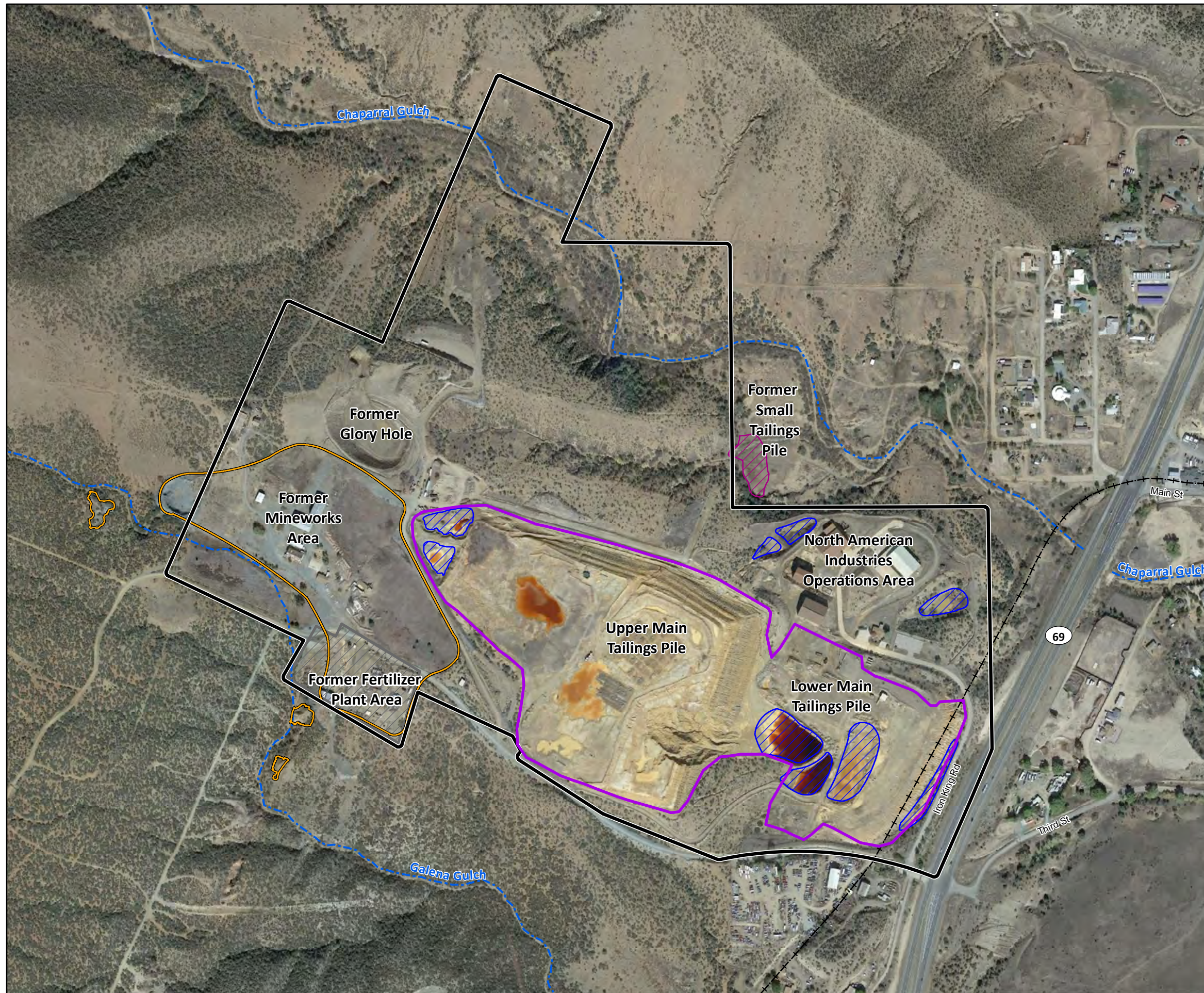
- River
- Intermittent Drainage
- Former Iron King Mine Property
- Former Humboldt Smelter Property
- Dewey-Humboldt Town Boundary
- Prescott National Forest



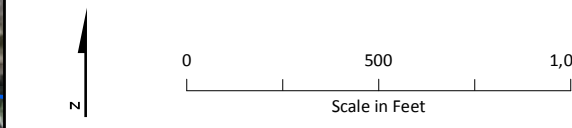
**Notes:**

The boundaries of the former Iron King Mine and former Humboldt Smelter represent property boundaries and do not directly correspond to the area of historical operations or impacts.  
 Image Source: USDA, 2015.

**Figure 1-1**  
**Iron King Mine, Humboldt Smelter, and Surrounding Region**  
*Iron King Mine – Humboldt Smelter Superfund Site*  
*Dewey-Humboldt, Yavapai County, Arizona*



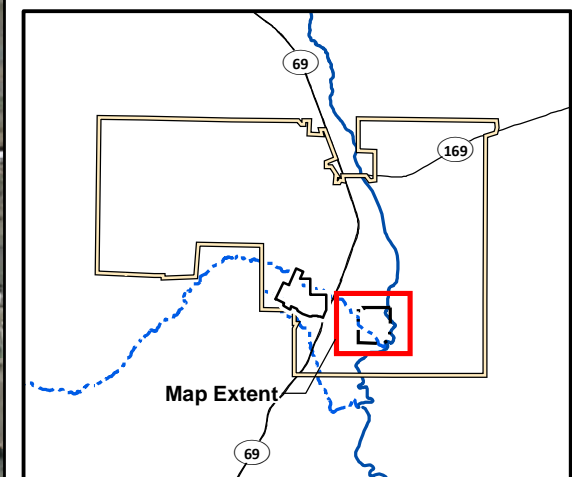
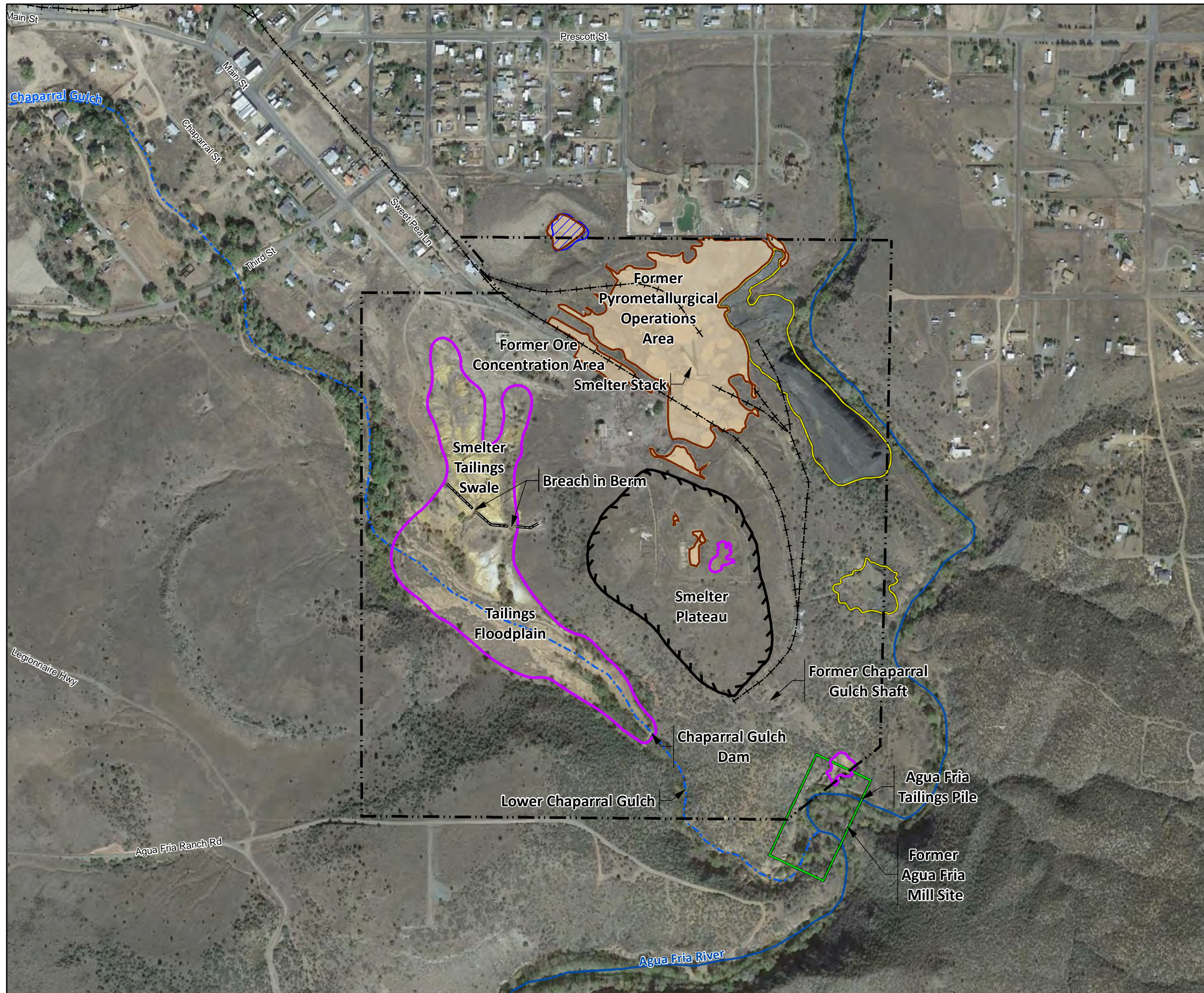
- LEGEND**
- Historic Rail Line
  - River
  - - - Intermittent Drainage
  - ▭ Former Iron King Mine Property
  - ▭ Main Tailings Pile
  - ▭ Waste Rock<sup>a</sup>
  - ▨ Former Small Tailings Pile<sup>b</sup>
  - ▨ Retention Pond
  - ▨ Former Fertilizer Plant Area
  - - - Former Humboldt Smelter Property
  - ▭ Dewey-Humboldt Town Boundary



<sup>a</sup>The extent of waste rock in the former Mineworks area was obtained from EA Engineering, Science, and Technology, Inc. (EA, 2010). The extent of waste rock south and west of the former Iron King Mine property boundary was identified during the EPA/ERT investigation (Lockheed Martin SERAS, 2015).  
<sup>b</sup>The extent of the former Small Tailings Pile was obtained from E & E, 2012. EPA removed the Small Tailings Pile in 2011 and consolidated the waste with the Main Tailings Pile (E & E, 2012).

Notes:  
 Image Source: Google Earth™; Image date November 6, 2015.  
 Accessed February 2, 2016.

**Figure 1-2**  
**Former Iron King Mine Property –**  
**Significant Features**  
*Iron King Mine – Humboldt Smelter Superfund Site*  
*Dewey-Humboldt, Yavapai County, Arizona*



**LEGEND**

- Historic Rail Line
- River
- - - Intermittent Drainage
- Containment Berm
- - - Former Humboldt Smelter Property
- Former Iron King Mine Property
- Dewey-Humboldt Town Boundary
- ▨ Retention Pond
- ▨ Smelter Plateau
- ▨ Tailings
- ▨ Slag Pile
- ▨ Dross Area
- ▨ Dross Pile
- ▨ Former Agua Fria Mill Site<sup>a</sup>

0 500 1,000  
Scale in Feet

<sup>a</sup>Location of former Agua Fria Mill Site is approximate and derived from an undated Sanborn Company Fire Insurance Map.

Notes:  
The extent of tailings was obtained from EA Engineering, Science, and Technology, Inc. (EA, 2010). The extent of dross and slag was obtained from Lockheed Martin SERAS (2015). EPA observations indicate that dross mixed with slag also extends down to the Agua Fria River in the northeastern portion of the slag pile (see Appendix A).  
Image Source: Google Earth™; Image date November 6, 2015. Accessed February 2, 2016.

**Figure 1-3**  
**Former Humboldt Smelter Property – Significant Features**  
*Iron King Mine – Humboldt Smelter Superfund Site  
Dewey-Humboldt, Yavapai County, Arizona*