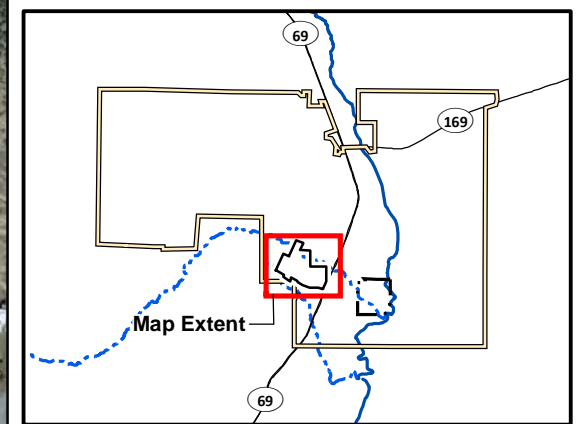


Map Label	Building/Structure Description ^a
1	Cistern (1950)
2	Former Mill (approximate)
3	Former Shop (1955)
4	Former Mechanical Building
5	Former Main Office
6	Former Assay Office/Laboratory
7	Former Ironite Office (1960)
8	Sewage Waste Processing Facility (1980)
9	Ironite Warehouses (1970)
10	NAI Production Packaging Building (1988)
11	NAI Production Building (1988)
12	NAI Warehouse (1988)
13	NAI Office (1988)
14	NAI Shipping Warehouse (1988)
15	Southwestern End of the 100 Level Mine Workings (approximate)



LEGEND

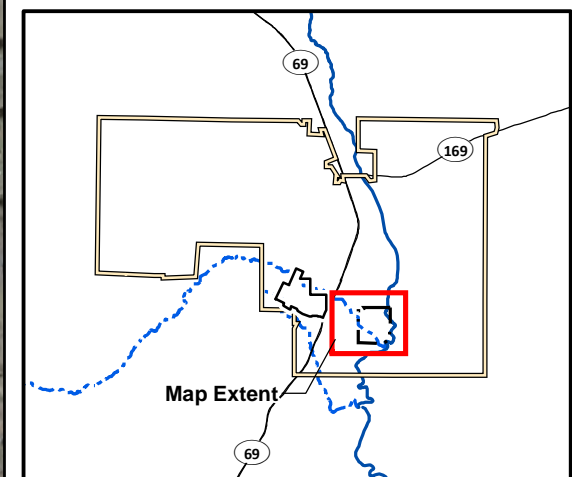
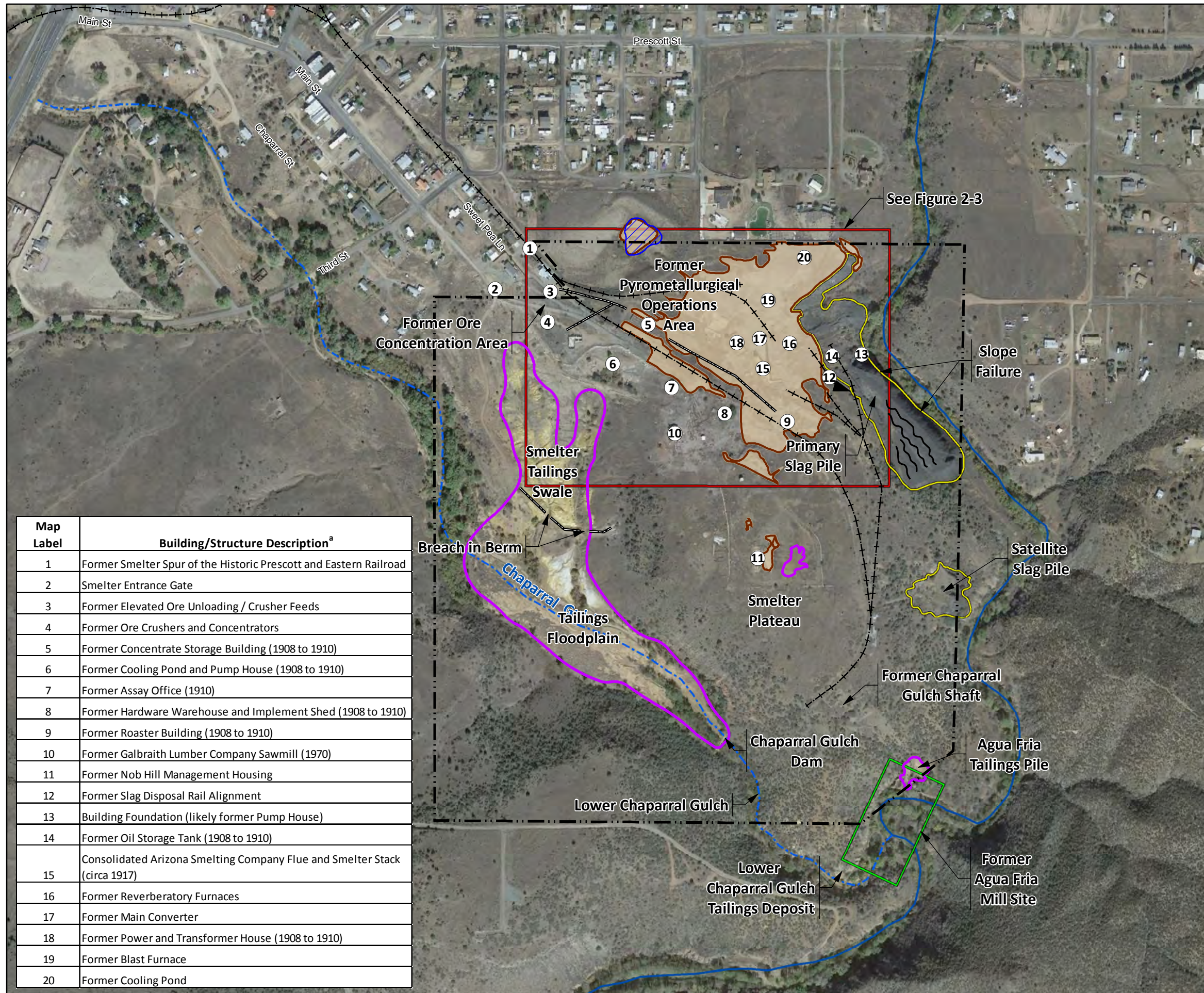
- ① Building/Structure Location^a
- Shaft Location^a
- Galena Gulch Portal^b
- Galena Gulch Shaft^b
- Former Slurry Line for Gold and Silver Recovery Operation
- Main Tailings Pile 1964 Blow Out Path
- Historic Rail Line
- River
- - - Intermittent Drainage
- ▭ Former Iron King Mine Property
- ▭ Main Tailings Pile
- ▭ Waste Rock^c
- ▭ Former Small Tailings Pile^d
- ▭ Retention Pond
- ▭ Former Fertilizer Plant Area
- ▭ Former Humboldt Smelter Property
- ▭ Dewey-Humboldt Town Boundary

0 500 1,000
Scale in Feet

^aThe location of historic features and mine shafts were obtained from ACS (2008), the U.S. Department of the Interior (USDI, 1950), and the USGS (1958).
^bThe location of the Galena Gulch mine shafts and portal were identified in 2014 during the ERT data gap investigation (Lockheed Martin SERAS, 2015) and are shown for comparison to the location of the mine shafts placed using USGS 1958. Some of the shafts from the two sources are likely the same.
^cThe extent of waste rock in the former Mineworks area was obtained from EA Engineering, Science, and Technology, Inc. (EA, 2010). The extent of waste rock south and west of the former Iron King Mine property boundary was identified during the ERT data gap investigation (Lockheed Martin SERAS, 2015).
^dEPA removed the Small Tailings Pile in 2011 and consolidated the waste with the Main Tailings Pile (E & E, 2012).

Note:
 Image Source: Google Earth™; Image date November 6, 2015.
 Accessed February 2, 2016.

Figure 2-1
Former Iron King Mine Property – Detailed Features
 Iron King Mine – Humboldt Smelter Superfund Site
 Dewey-Humboldt, Yavapai County, Arizona



LEGEND

- ① Building/Structure Location^a
- ➔ Former Slag Disposal Rail Alignment
- Aerial Conveyance
- Tension Crack
- +— Historic Rail Line
- Containment Berm
- River
- - - Intermittent Drainage
- Former Humboldt Smelter Property
- ▨ Retention Pond
- ▩ Smelter Plateau
- ▭ Tailings
- ▭ Slag Pile
- ▭ Dross Area
- ▭ Dross Pile
- ▭ Former Agua Fria Mill Site^b
- ▭ Former Iron King Mine Property
- ▭ Dewey-Humboldt Town Boundary

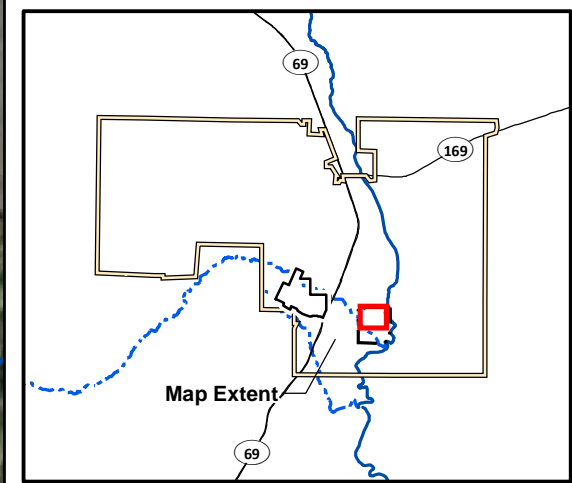
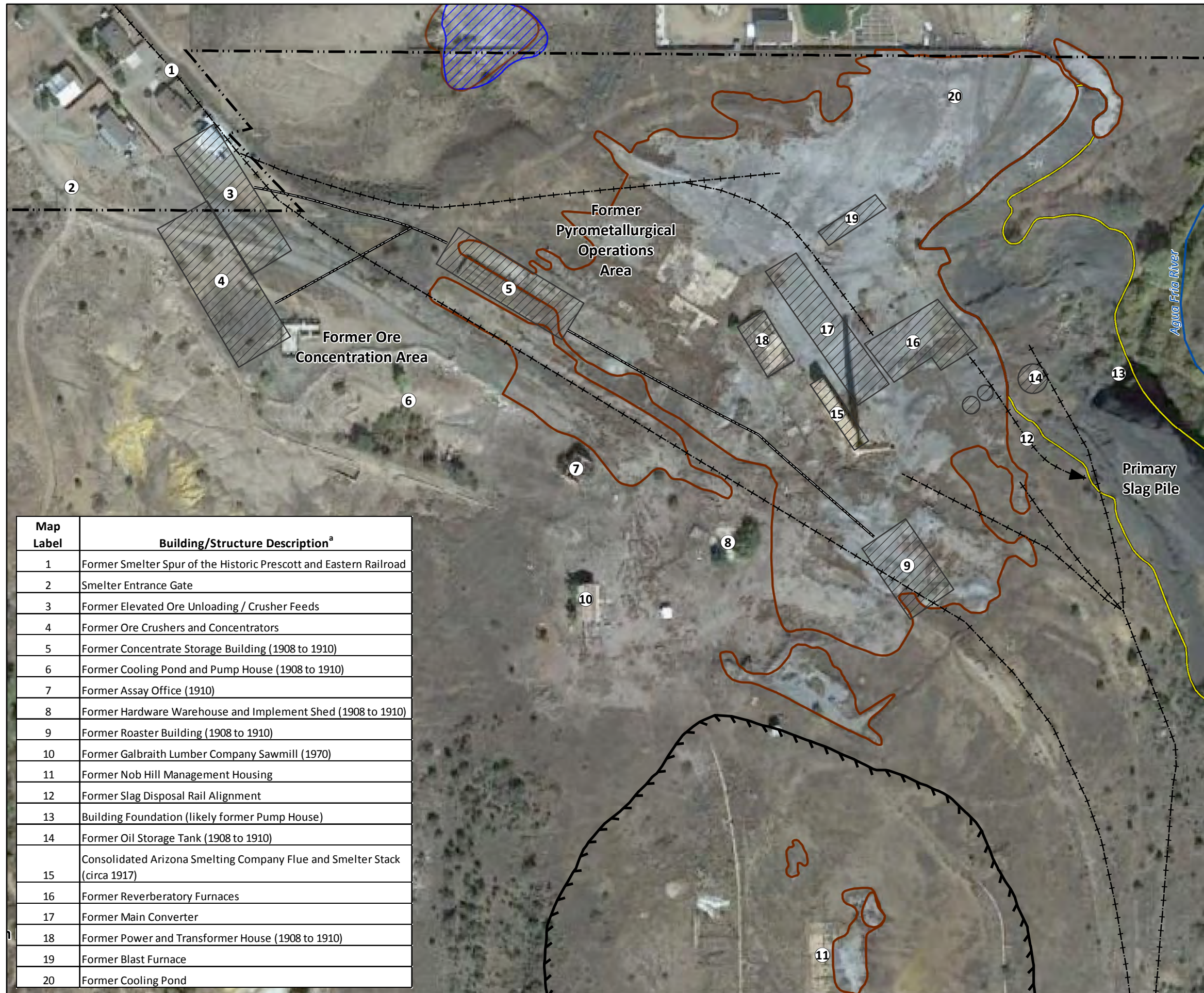
0 500 1,000
Scale in Feet

^aThe location of historic features was obtained from ACS (ACS, 2008) and EPA's interpretation of Sanborn Company Fire Insurance Maps. Construction date shown in parentheses (ACS, 2008).
^bLocation of former Agua Fria Mill Site is approximate and derived from an undated Sanborn Company Fire Insurance Map.

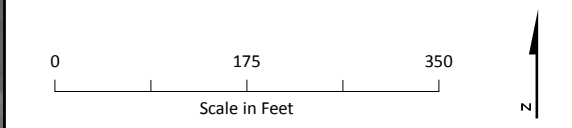
Notes:
 The extent of tailings was obtained from EA Engineering, Science, and Technology, Inc. (EA, 2010). The extent of dross and slag was obtained from Lockheed Martin SERAS (2015). EPA observations indicate that dross mixed with slag extends down to the Agua Fria River in the northeastern portion of the slag pile (see Appendix A).
 Image Source: Google Earth™; Image date November 6, 2015. Accessed February 2, 2016.

Map Label	Building/Structure Description ^a
1	Former Smelter Spur of the Historic Prescott and Eastern Railroad
2	Smelter Entrance Gate
3	Former Elevated Ore Unloading / Crusher Feeds
4	Former Ore Crushers and Concentrators
5	Former Concentrate Storage Building (1908 to 1910)
6	Former Cooling Pond and Pump House (1908 to 1910)
7	Former Assay Office (1910)
8	Former Hardware Warehouse and Implement Shed (1908 to 1910)
9	Former Roaster Building (1908 to 1910)
10	Former Galbraith Lumber Company Sawmill (1970)
11	Former Nob Hill Management Housing
12	Former Slag Disposal Rail Alignment
13	Building Foundation (likely former Pump House)
14	Former Oil Storage Tank (1908 to 1910)
15	Consolidated Arizona Smelting Company Flue and Smelter Stack (circa 1917)
16	Former Reverberatory Furnaces
17	Former Main Converter
18	Former Power and Transformer House (1908 to 1910)
19	Former Blast Furnace
20	Former Cooling Pond

Figure 2-2
Former Humboldt Smelter Property – Detailed Features
 Iron King Mine – Humboldt Smelter Superfund Site
 Dewey-Humboldt, Yavapai County, Arizona



- LEGEND**
- ① Building/Structure Location^a
 - Aerial Conveyance
 - + Historic Rail Line
 - River
 - - - Former Humboldt Smelter Property
 - ▨ Building/Structure^a
 - ▨ Retention Pond
 - ▨ Smelter Plateau
 - ▨ Dross Area
 - ▨ Slag Pile
 - ▨ Former Iron King Mine Property
 - ▨ Dewey-Humboldt Town Boundary



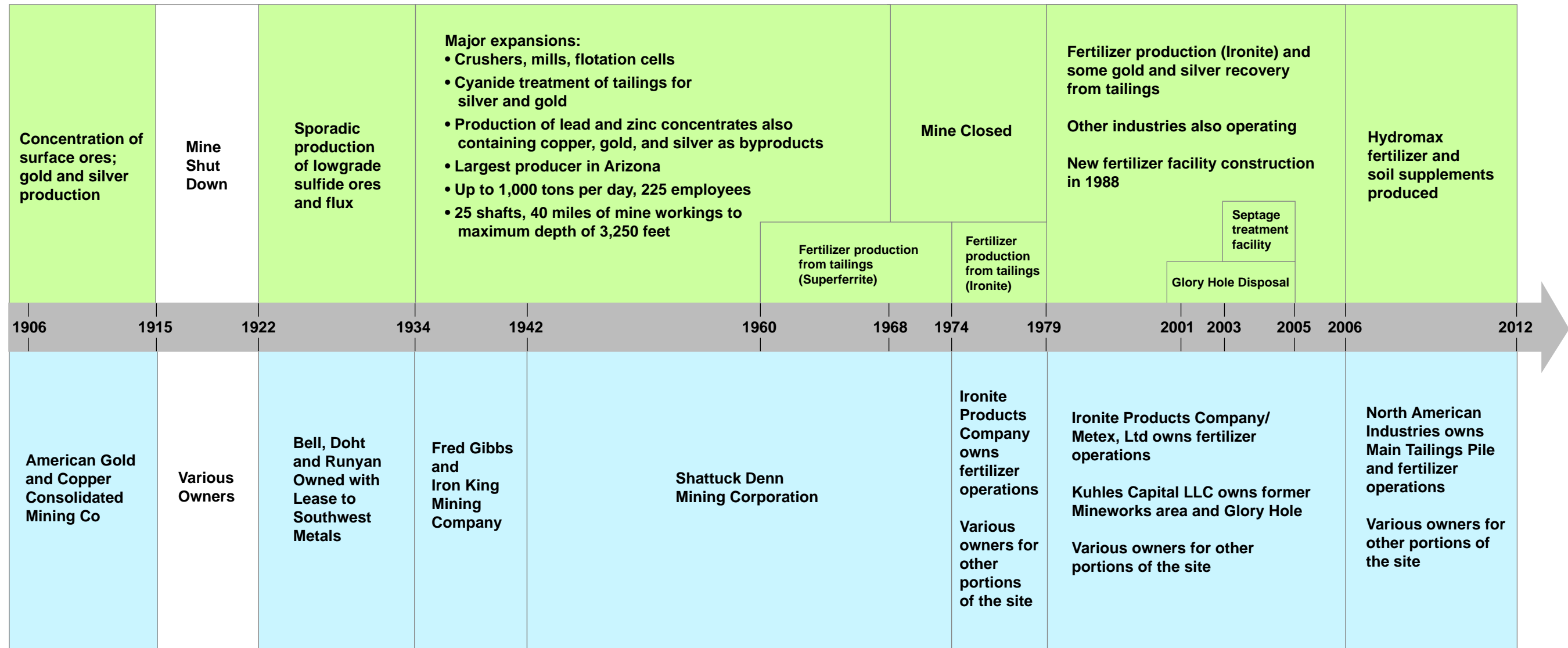
^aThe location of historic features was obtained from ACS (ACS, 2008) and EPA's interpretation of Sanborn Company Fire Insurance Maps. Construction date shown in parenthesis (ACS, 2008).

Notes:
 The extent of dross and slag was obtained from Lockheed Martin SERAS (2015). EPA observations indicate that dross mixed with slag also extends down to the Agua Fria River in the northeastern portion of the slag pile (see Appendix A).
 Image Source: Google Earth™; Image date November 6, 2015. Accessed February 2, 2016.

Map Label	Building/Structure Description ^a
1	Former Smelter Spur of the Historic Prescott and Eastern Railroad
2	Smelter Entrance Gate
3	Former Elevated Ore Unloading / Crusher Feeds
4	Former Ore Crushers and Concentrators
5	Former Concentrate Storage Building (1908 to 1910)
6	Former Cooling Pond and Pump House (1908 to 1910)
7	Former Assay Office (1910)
8	Former Hardware Warehouse and Implement Shed (1908 to 1910)
9	Former Roaster Building (1908 to 1910)
10	Former Galbraith Lumber Company Sawmill (1970)
11	Former Nob Hill Management Housing
12	Former Slag Disposal Rail Alignment
13	Building Foundation (likely former Pump House)
14	Former Oil Storage Tank (1908 to 1910)
15	Consolidated Arizona Smelting Company Flue and Smelter Stack (circa 1917)
16	Former Reverberatory Furnaces
17	Former Main Converter
18	Former Power and Transformer House (1908 to 1910)
19	Former Blast Furnace
20	Former Cooling Pond

Figure 2-3
Humboldt Smelter Former Pyrometallurgical Area – Detailed Historical Features
 Iron King Mine – Humboldt Smelter Superfund Site
 Dewey-Humboldt, Yavapai County, Arizona

OPERATIONS

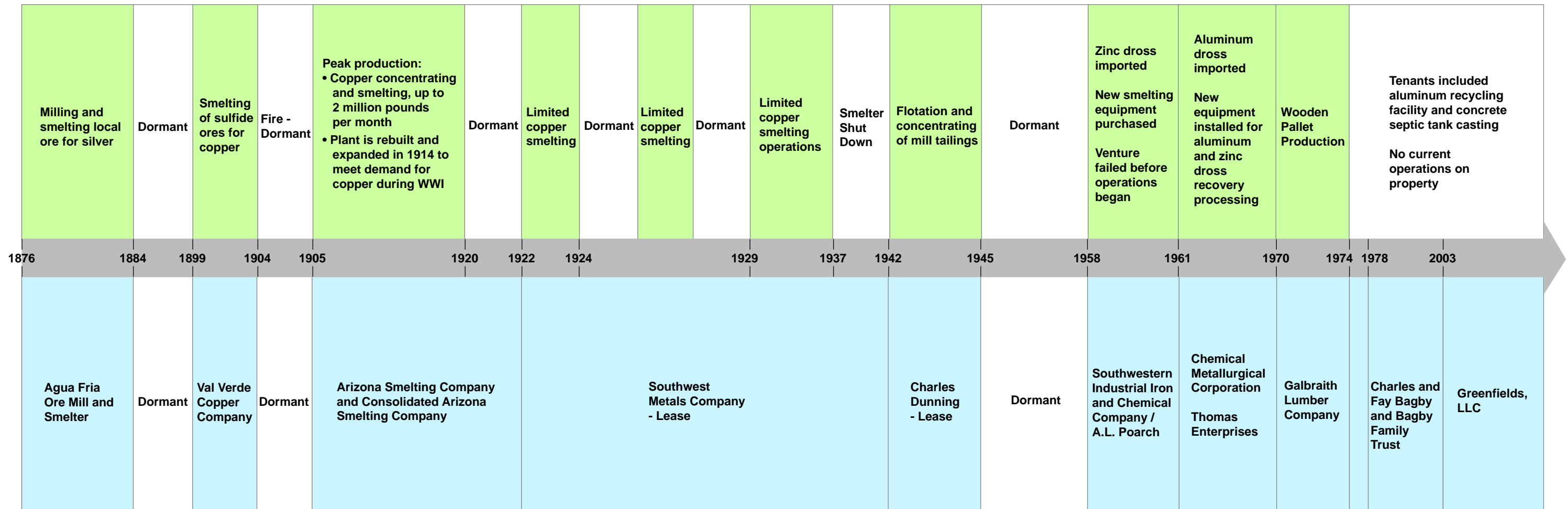


OWNERSHIP

Figure 2-4
Timeline of Iron King Mine Operations and Ownership
 Iron King Mine – Humboldt Smelter Superfund Site
 Dewey-Humboldt, Yavapai County, Arizona

Note:
 This timeline approximates details provided in the Archaeological Consulting Services (ACS), LTD *Cultural Resource and Historic Building Survey for a Remedial Investigation/Feasibility Study at the Iron King Mine-Humboldt Smelter Superfund Site* (ACS, 2008).

OPERATIONS

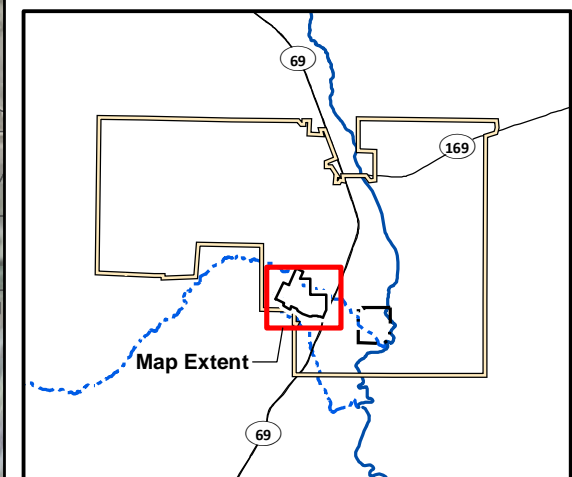
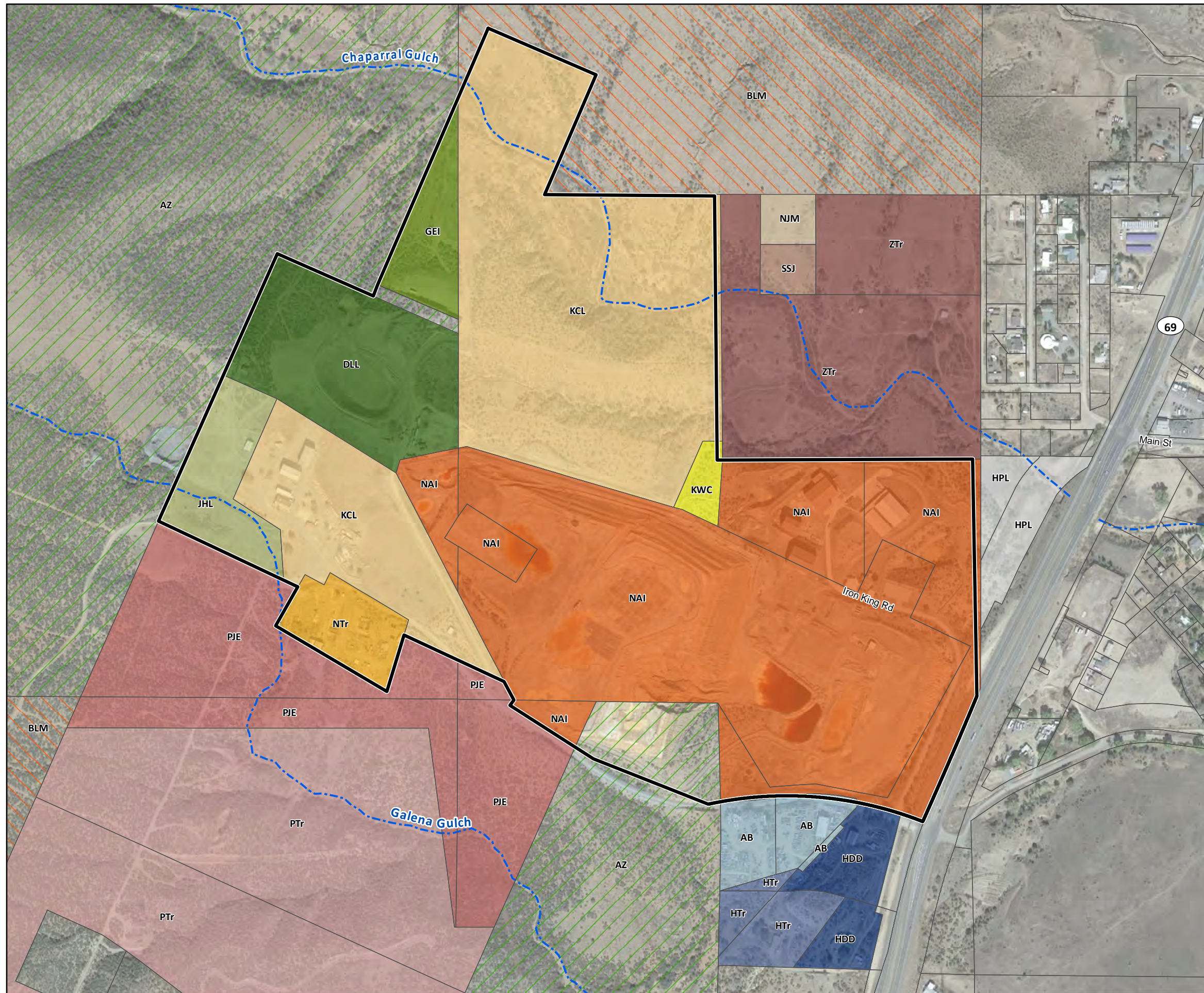


OWNERSHIP

**Figure 2-5
Timeline of Humboldt Smelter Operations and Ownership**

*Iron King Mine – Humboldt Smelter Superfund Site
Dewey-Humboldt, Yavapai County, Arizona*

Note:
This timeline approximates details provided in the Archaeological Consulting Services (ACS), LTD *Cultural Resource and Historic Building Survey for a Remedial Investigation/Feasibility Study at the Iron King Mine-Humboldt Smelter Superfund Site* (ACS, 2008).



LEGEND

- River
- - - Intermittent Drainage
- Parcel Boundary

Iron King Mine Parcel Ownership

- DLL: Dakota Logging LLC
- GEI: Grim Excavating Inc
- JHL: Iron Holdings LLC
- KWC: Kuhles Warren C
- KCL: Kuhles Capital LLC
- NTr: Nolan Terry L Living Trust
- NAI: North American Industries Corp

Public Land Ownership

- BLM: Bureau of Land Management
- AZ: State of Arizona

Surrounding Parcel Land Ownership

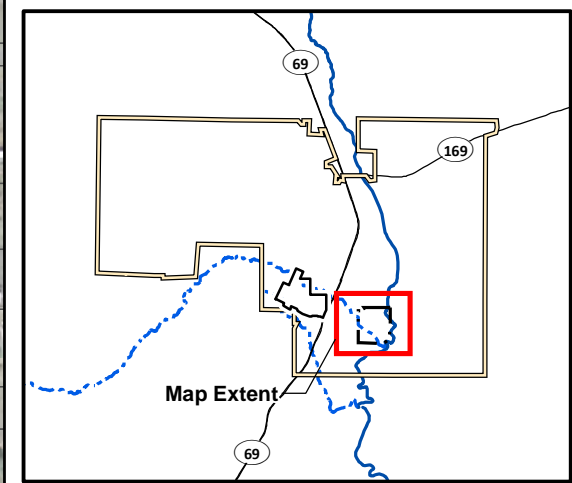
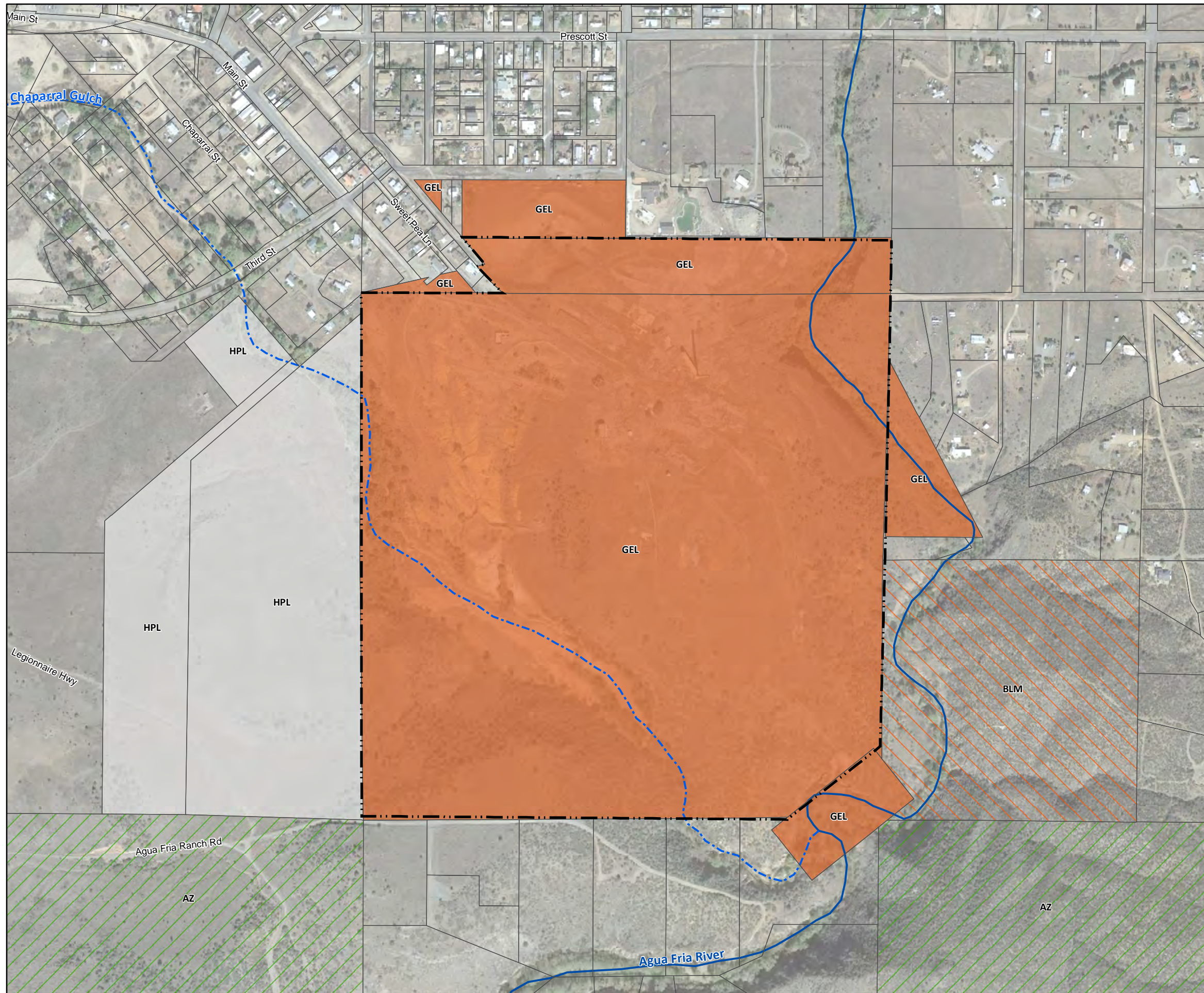
- HPL: Humboldt Properties LLC
- AB: Auringer Bradley
- HTr: Hyslip William H & Nita S Rev Living Trust
- HDD: Hyslip Delford D
- PTR: Peterson Family Trust
- PJE: Peterson James E & Dalvia J JT UI
- NJM: Normandin James Monte & Carol Rene RS
- SSJ: Schmitt Stephen J
- ZTr: Zegler David T Revocable Trust

- Former Iron King Mine Property
- Former Humboldt Smelter Property
- Dewey-Humboldt Town Boundary

0 500 1,000
Scale in Feet

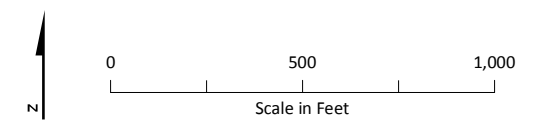
Notes:
Image Source: Google Earth™; Image date November 6, 2015. Accessed February 2, 2016.
Parcel boundaries from Yavapai County. Received May 8, 2015.
Ownership obtained from Yavapai County Interactive Map. Available at <http://gis.yavapai.us>. Accessed February 2, 2016.

Figure 2-6
Current Land Ownership at the Former Iron King Mine
*Iron King Mine – Humboldt Smelter Superfund Site
Dewey-Humboldt, Yavapai County, Arizona*



LEGEND

- River
- - - Intermittent Drainage
- ▭ Parcel Boundary
- Humboldt Smelter Parcel Ownership**
- GEL: Greenfields Enterprises LLC
- Public Land Ownership**
- ▨ BLM: Bureau of Land Management
- ▨ AZ: State of Arizona
- Surrounding Parcel Land Ownership**
- HPL: Humboldt Properties LLC
- ▭ Former Iron King Mine Property
- ▭ Former Humboldt Smelter Property
- ▭ Dewey-Humboldt Town Boundary



Notes:
 Image Source: Google Earth™; Image date November 6, 2015.
 Accessed February 2, 2016.
 Parcel boundaries from Yavapai County. Received May 8, 2015.
 Ownership obtained from Yavapai County Interactive Map.
 Available at <http://gis.yavapai.us>. Accessed February 2, 2016.

Figure 2-7
Current Land Ownership at the Former Humboldt Smelter
 Iron King Mine – Humboldt Smelter Superfund Site
 Dewey-Humboldt, Yavapai County, Arizona