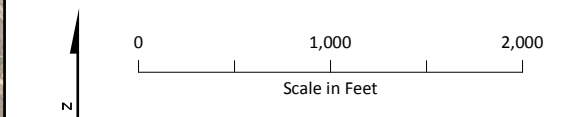


LEGEND

- Soil Sample Location by Investigation Phase**
- 2002 PA/SI of the Former Iron King Mine (ADEQ, 2002)
 - 2004 PA/SI of the Former Humboldt Smelter (ADEQ, 2004)
 - 2005 EPA Removal Assessment (E & E, 2005)
 - 2008 Ironite Products Company/North American Industries Sampling (Brown and Caldwell, 2009b)
- Historic Rail Line
 - River
 - - - Intermittent Drainage
 - ▭ Property Sampled in 2005
 - ▭ Former Iron King Mine Property
 - ▭ Former Humboldt Smelter Property
 - ▭ Dewey-Humboldt Town Boundary



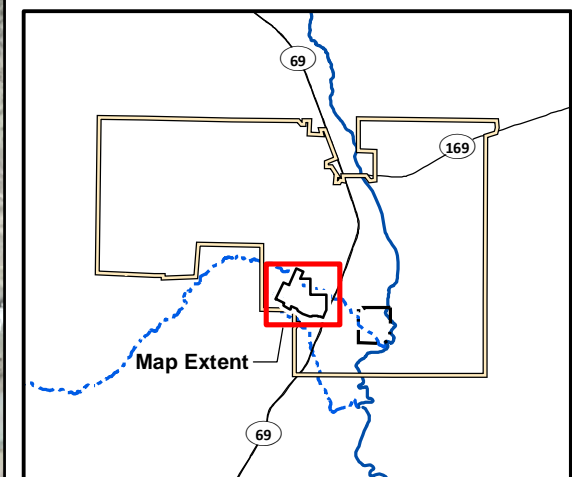
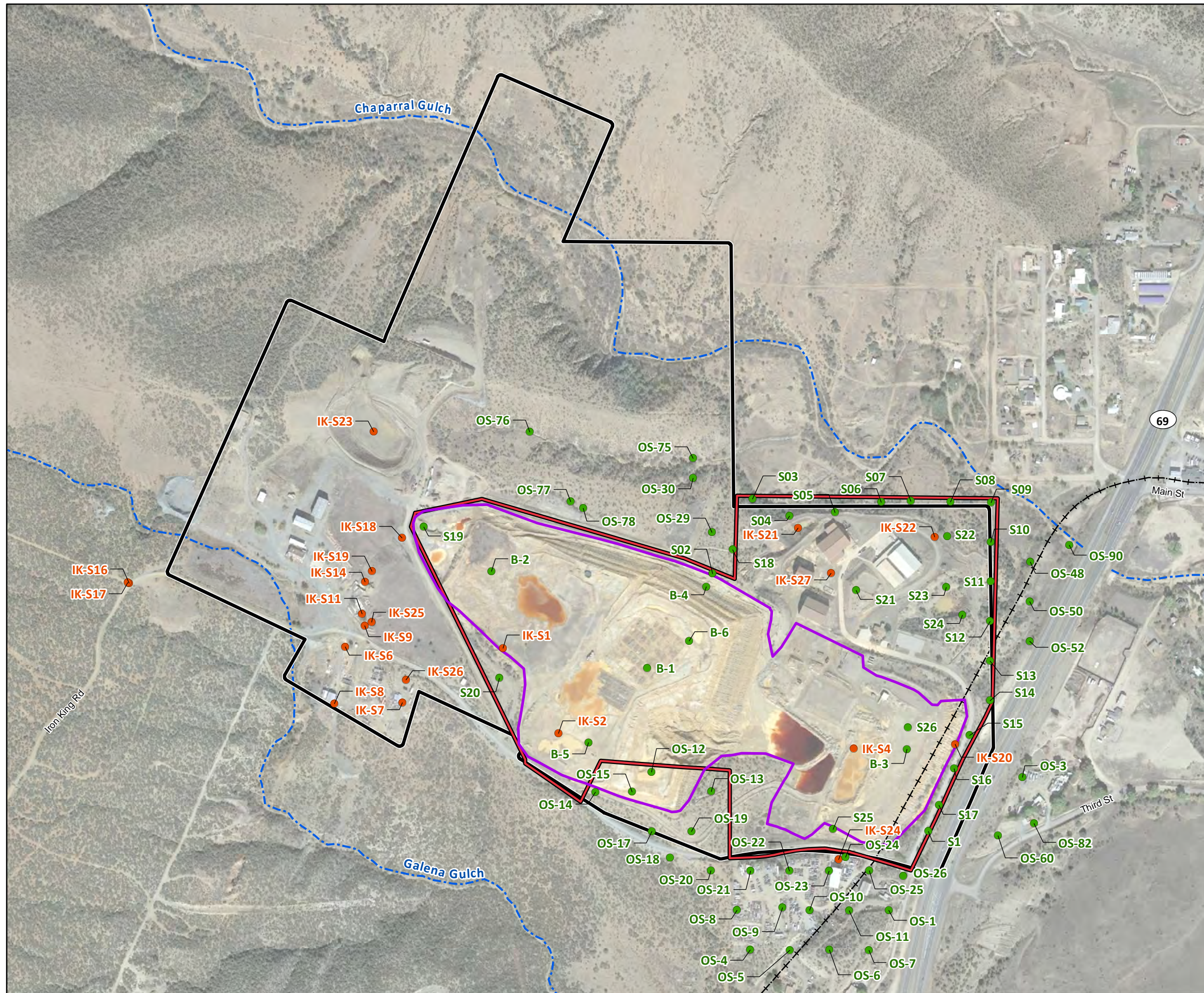
^aLocation coordinates were not available for all samples collected at properties O02, O03, 171/O04, O06, O07, O08, O09, O10, O11, O12, O13, O14, O15, O16, O17, and 127. See embedded table for a list of unmapped 2005 sample locations.

^bFor the purpose of the risk assessment, properties O19 and O20 were combined in this RI to form Property 127.

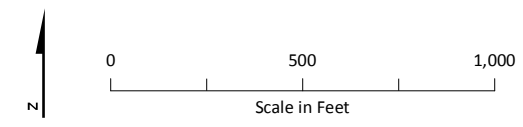
Notes:
 One sample, HS-47, from the 2004 PA/SI of the Humboldt Smelter investigation was collected outside of the main map extent. This sample location is shown in the overview inset.
 Imagery from USDA-FSA Aerial Photography Field Office Ortho Imagery (ortho_1-1_1n_s_az025_2015_1), dated 2015. Available at <https://gdg.sc.gov.usda.gov/Catalog/ProductDescription/NAIPM.html>. Accessed January 26, 2016.
 Underlying hillshade model derived from USGS National Elevation Dataset (grdn35w113_13), dated 2013. Available at <http://nationalmap.gov/viewer.html>. Accessed April 15, 2015.

Figure 3-1A
Soil Sample Locations, Pre-NPL Investigations
 Iron King Mine – Humboldt Smelter Superfund Site
 Dewey-Humboldt, Yavapai County, Arizona

Property ID ^a	2005 Sample Locations Not Shown in Map
O02	02-A, 02-B, 02-C, 02-D, 02-E, 02-F, 02-G, 02-H, 02-I
O03	03-A, 03-B, 03-C, 03-D, 03-E, 03-F, 03-G, 03-H, 03-I
171 / O04	04-A, 04-B, 04-C, 04-D, 04-E, 04-F, 04-G, 04-H, 04-I
O06	06-A, 06-B, 06-C, 06-D, 06-E, 06-F, 06-G, 06-H, 06-I
O07	07-A, 07-B, 07-C, 07-D, 07-E, 07-F, 07-G, 07-H, 07-I
O08	08-A, 08-B, 08-C, 08-D, 08-E, 08-F, 08-G, 08-H, 08-I
O09	09-A, 09-B, 09-C, 09-D, 09-E, 09-F, 09-G, 09-H, 09-I
O10	10-A, 10-B, 10-C, 10-D, 10-E, 10-F, 10-G, 10-H, 10-I
O11	11-A, 11-B, 11-C, 11-D, 11-E, 11-F, 11-G, 11-H, 11-I
O12	12-A, 12-B, 12-C, 12-D, 12-E, 12-F, 12-G, 12-H, 12-I
O13	13-A, 13-B, 13-C, 13-D, 13-E, 13-F, 13-G, 13-H, 13-I
O14	14-A, 14-B, 14-C, 14-D, 14-E, 14-F, 14-G, 14-H, 14-I
O15	15-A, 15-B, 15-C, 15-D, 15-E, 15-F, 15-G, 15-H, 15-I
O16	16-A, 16-B, 16-C, 16-D, 16-E, 16-F, 16-G, 16-H, 16-I
O17	17-A, 17-B, 17-C, 17-D, 17-E, 17-F, 17-G, 17-H, 17-I
127	19-A, 19-B, 19-C, 19-D, 19-E, 19-F, 19-G, 19-H, 19-I, 20-A, 20-B, 20-C, 20-D, 20-E, 20-F, 20-G, 20-H, 20-I

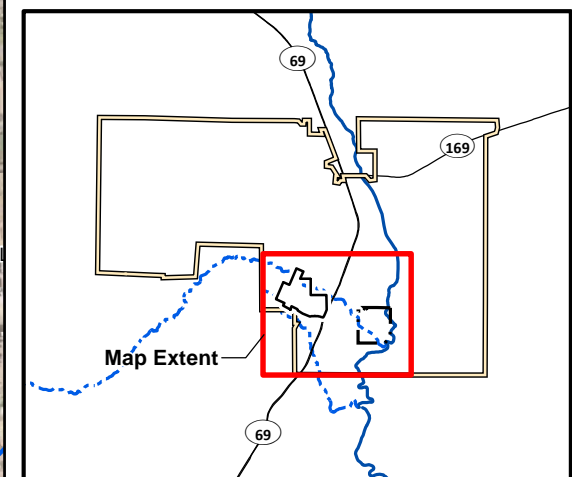
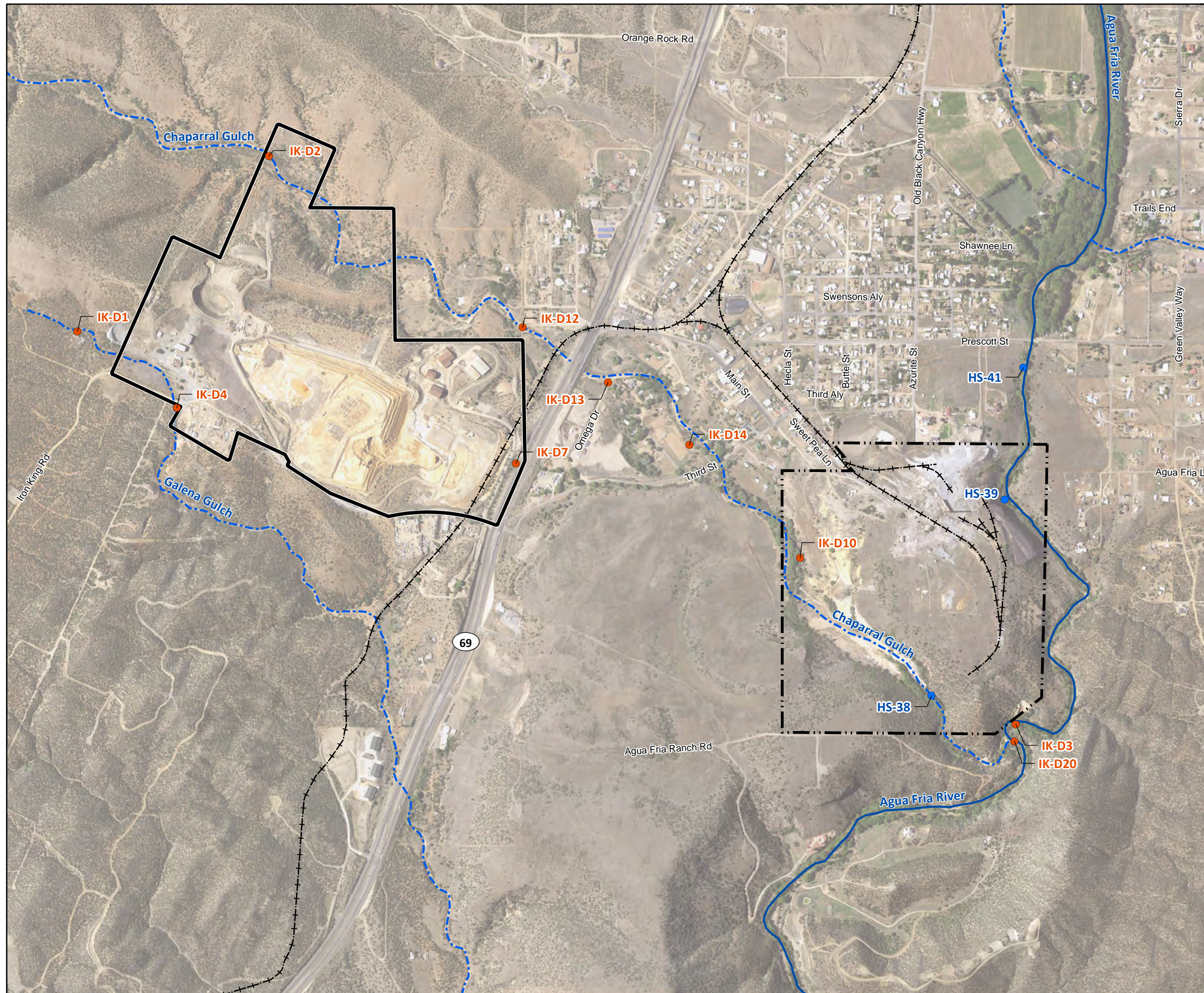


- LEGEND**
- Soil Sample Location by Investigation Phase**
- 2002 PA/SI of the Former Iron King Mine (ADEQ, 2002)
 - 2008 Ironite Products Company/North American Industries Sampling (Brown and Caldwell, 2009b)
 - Historic Rail Line
 - River
 - - - Intermittent Drainage
 - ▭ Main Tailings Pile
 - ▭ North American Industries Property Boundary
 - ▭ Former Iron King Mine Property
 - ▭ Former Humboldt Smelter Property
 - ▭ Dewey-Humboldt Town Boundary



Notes:
 Image Source: Google Earth™; Image date November 6, 2015.
 Accessed February 2, 2016.

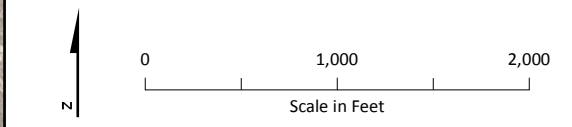
Figure 3-1B
Soil Sample Locations, Pre-NPL
Investigations – Former Iron King Mine
 Iron King Mine – Humboldt Smelter Superfund Site
 Dewey-Humboldt, Yavapai County, Arizona



LEGEND

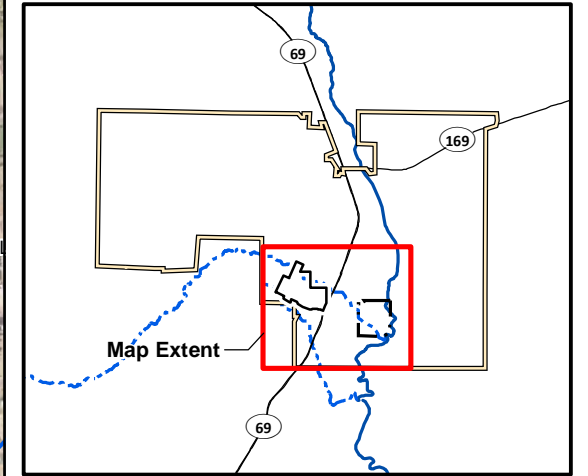
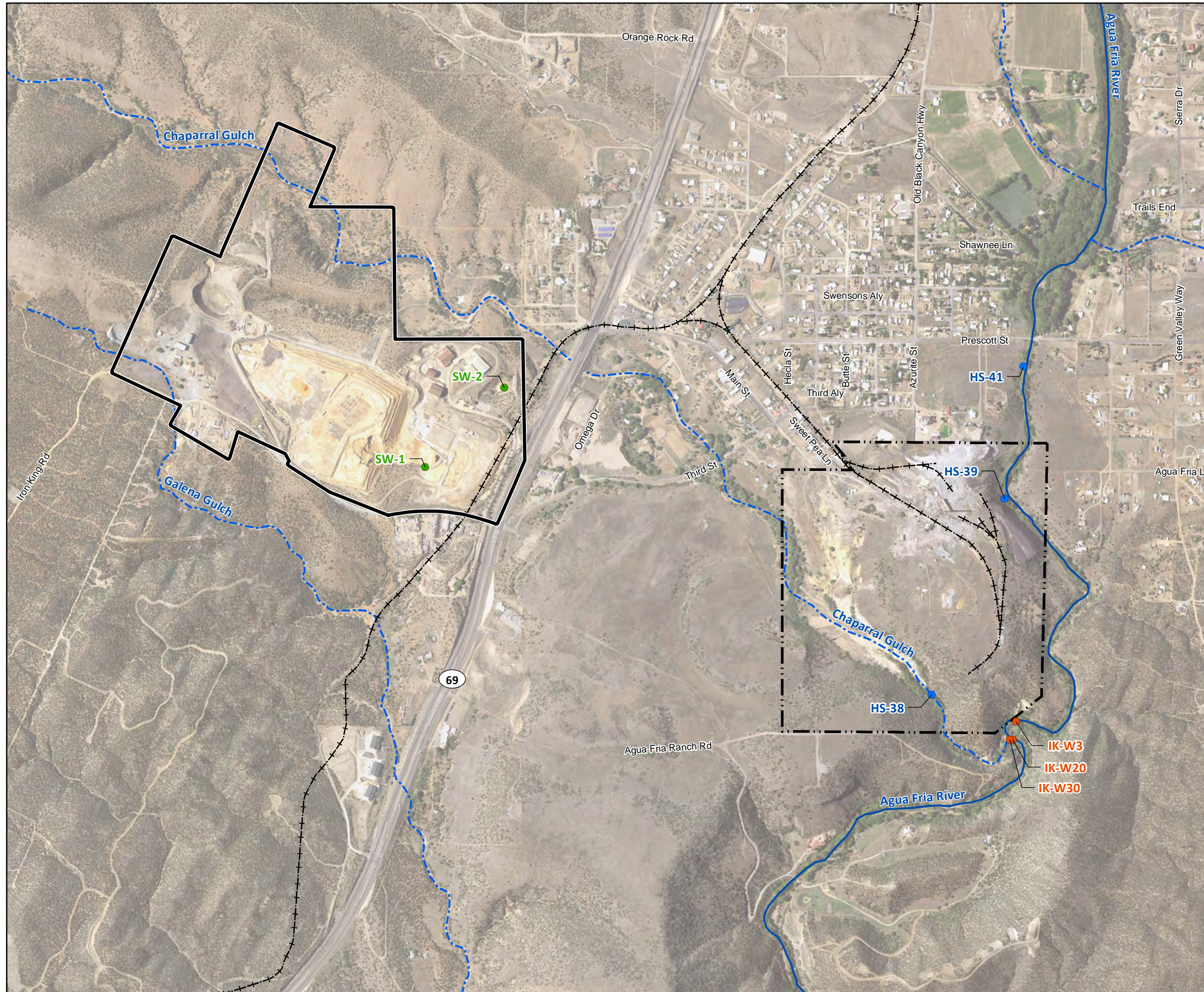
Sediment Sample Location by Investigation Phase

- 2002 PA/SI of the Former Iron King Mine (ADEQ, 2002)
- 2004 PA/SI of the Former Humboldt Smelter (ADEQ, 2004)
- Historic Rail Line
- River
- - - Intermittent Drainage
- ▭ Former Iron King Mine Property
- ▭ Former Humboldt Smelter Property
- ▭ Dewey-Humboldt Town Boundary



Notes:
 Imagery from USDA-FSA Aerial Photography Field Office Ortho Imagery (ortho_1-1_1n_s_az025_2015_1), dated 2015. Available at <https://gdg.sc.egov.usda.gov/Catalog/ProductDescription/NAIPM.html>. Accessed January 26, 2016.
 Underlying hillshade model derived from USGS National Elevation Dataset (grdn35w113_13), dated 2013. Available at <http://nationalmap.gov/viewer.html>. Accessed April 15, 2015.

Figure 3-2
Sediment Sample Locations,
Pre-NPL Investigations
Iron King Mine – Humboldt Smelter Superfund Site
Dewey-Humboldt, Yavapai County, Arizona

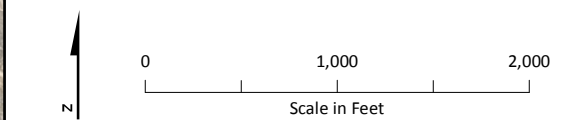


LEGEND

Surface Water Sample Location by Investigation Phase

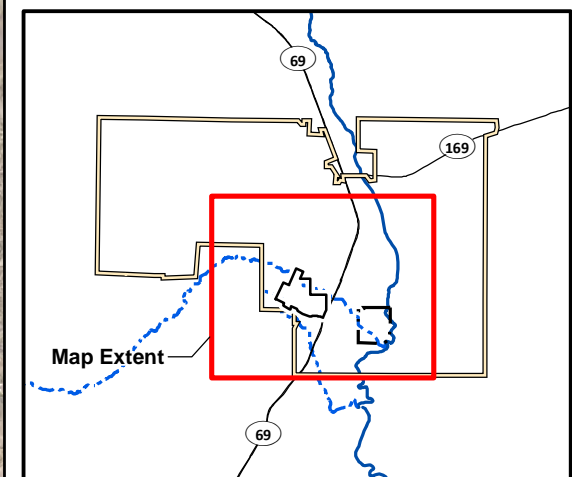
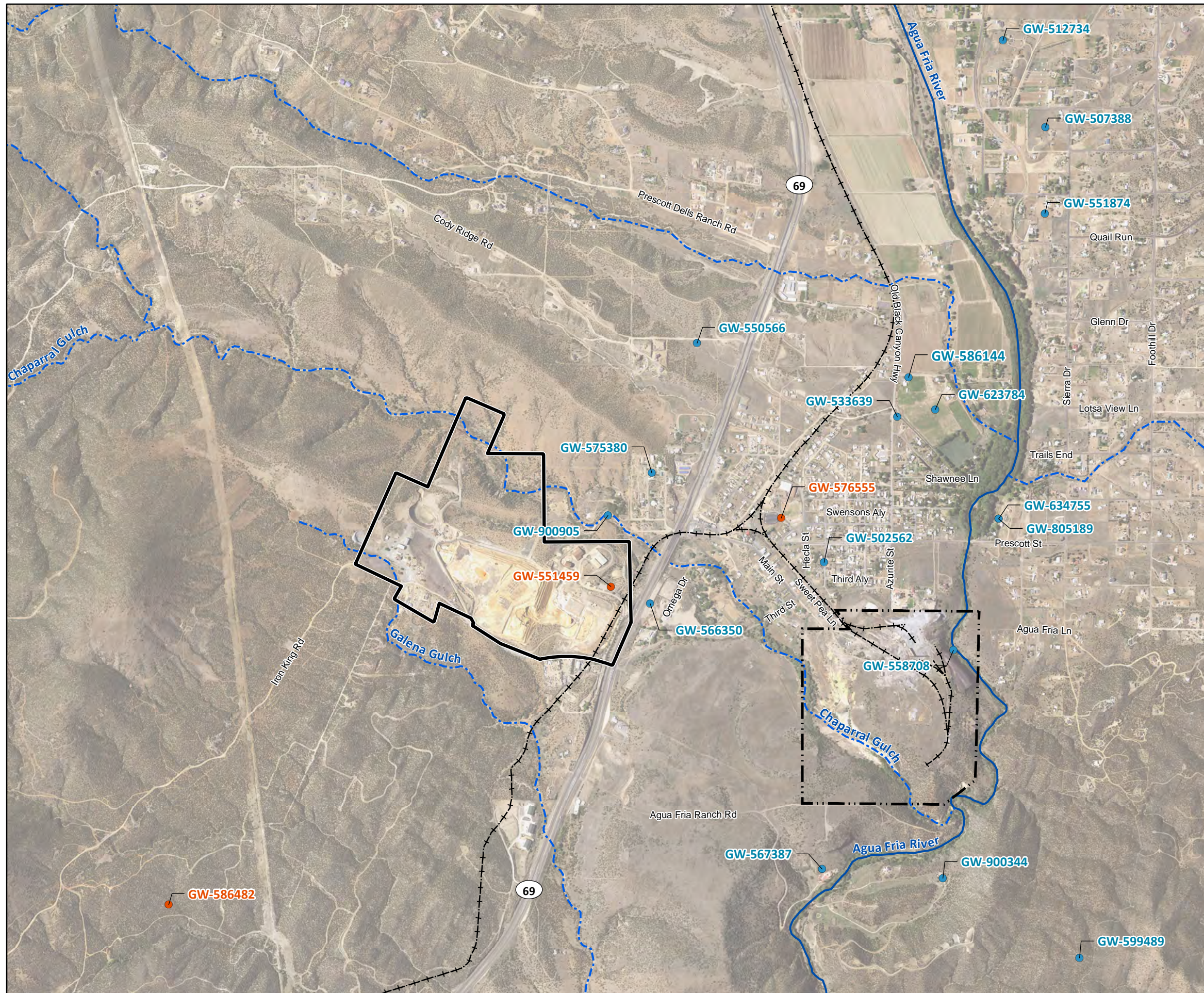
- 2002 PA/SI of the Former Iron King Mine (ADEQ, 2002)
- 2004 PA/SI of the Former Humboldt Smelter (ADEQ, 2004)
- 2008 Ironite Products Company/North American Industries Sampling (Brown and Caldwell, 2009b)

- Historic Rail Line
- River
- Intermittent Drainage
- Former Iron King Mine Property
- Former Humboldt Smelter Property
- Dewey-Humboldt Town Boundary



Notes:
 Imagery from USDA-FSA Aerial Photography Field Office Ortho Imagery (ortho_1-1_1n_s_az025_2015_1), dated 2015. Available at <https://gdg.sc.egov.usda.gov/Catalog/ProductDescription/NAIPM.html>. Accessed January 26, 2016.
 Underlying hillshade model derived from USGS National Elevation Dataset (grdn35w113_13), dated 2013. Available at <http://nationalmap.gov/viewer.html>. Accessed April 15, 2015.

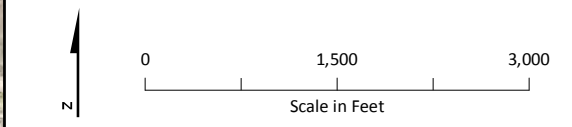
Figure 3-3
Surface Water Sample Locations,
Pre-NPL Investigations
Iron King Mine – Humboldt Smelter Superfund Site
Dewey-Humboldt, Yavapai County, Arizona



LEGEND

Groundwater Sample Location by Investigation Phase^a

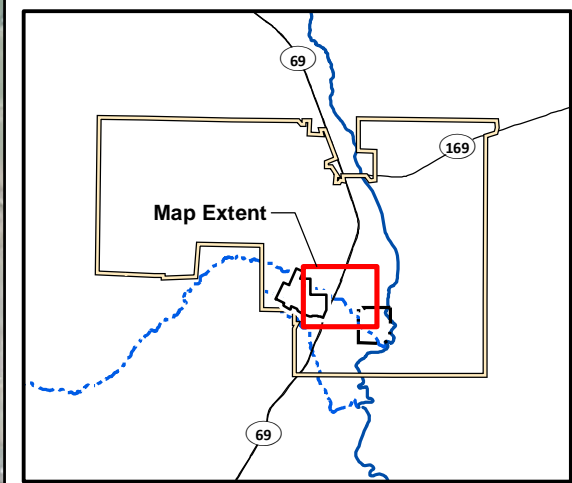
- 2002 PA/SI of the Former Iron King Mine (ADEQ, 2002)
- 2006 ESI (ADEQ, 2006)
- Historic Rail Line
- River
- - - Intermittent Drainage
- ▭ Former Iron King Mine Property
- - - Former Humboldt Smelter Property
- ▭ Dewey-Humboldt Town Boundary



^aLocation coordinates for were not available for H56, which was sampled as part of the 2006 ESI (ADEQ, 2006).

Notes:
 Imagery from USDA-FSA Aerial Photography Field Office Ortho Imagery (ortho_1-1_1n_s_az025_2015_1), dated 2015. Available at <https://gdg.sc.egov.usda.gov/Catalog/ProductDescription/NAIPM.html>. Accessed January 26, 2016. Underlying hillshade model derived from USGS National Elevation Dataset (grdn35w113_13), dated 2013. Available at <http://nationalmap.gov/viewer.html>. Accessed April 15, 2015.

Figure 3-4
Groundwater Sample Locations, Pre-NPL Investigations
 Iron King Mine – Humboldt Smelter Superfund Site
 Dewey-Humboldt, Yavapai County, Arizona



LEGEND

Removal Action Area^a

- Complete
- Partial
- Historic Rail Line
- River
- Intermittent Drainage
- Former Iron King Mine Property
- Former Humboldt Smelter Property
- Dewey-Humboldt Town Boundary

0 500 1,000
Scale in Feet

^aAreas shown as having complete removal action are defined as having had surface soil from more than 50 percent of the undeveloped portion of the area removed. Areas shown as having partial removal action were subject to hot spot removals only.

^bE & E's 2012 Removal Report describes a partial removal action at Yard 103 and states that no action was taken at adjacent Yard 142. With approval and input from EPA, select yard boundaries were adjusted in this RI, in instances where GPS measurements and field observations identified inconsistencies and inaccuracies. The boundary between Yards 103 and 142 was adjusted, and a portion of the 103 removal now falls within the boundary of 142. Therefore, both areas are shown as having partial removal action.

Notes:
Removal actions at Properties 002, 003, 171/004, and 007C were conducted in 2006 and 2007 by Brown and Caldwell on behalf of the Ironite Products Company (Brown and Caldwell, 2007). Removal actions at remaining areas were conducted in 2011 by the EPA and Ecology and Environment, Inc. (E & E, 2012).
Image Source: Google Earth™; Image date November 6, 2015. Accessed February 2, 2016.
Underlying hillshade model derived from USGS National Elevation Dataset (grdn35w113_13), dated 2013. Available at <http://nationalmap.gov/viewer.html>. Accessed April 15, 2015.

Figure 3-5
Removal Action Areas
Iron King Mine – Humboldt Smelter Superfund Site
Dewey-Humboldt, Yavapai County, Arizona