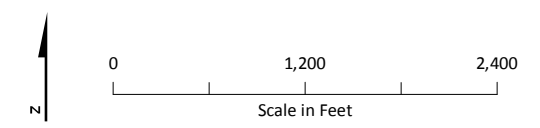


LEGEND

Surface Soil Sample Location by Remedial Investigation Phase^a

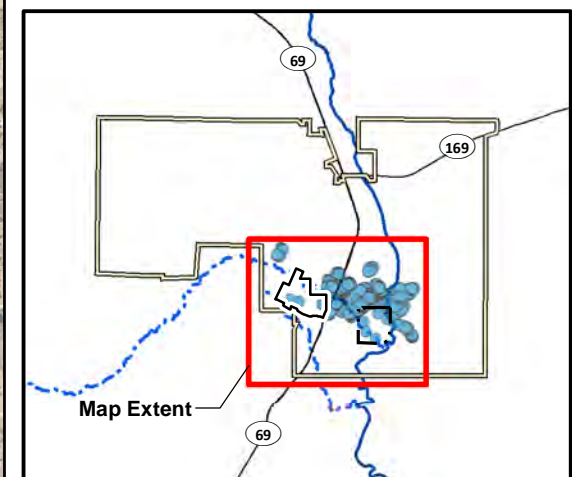
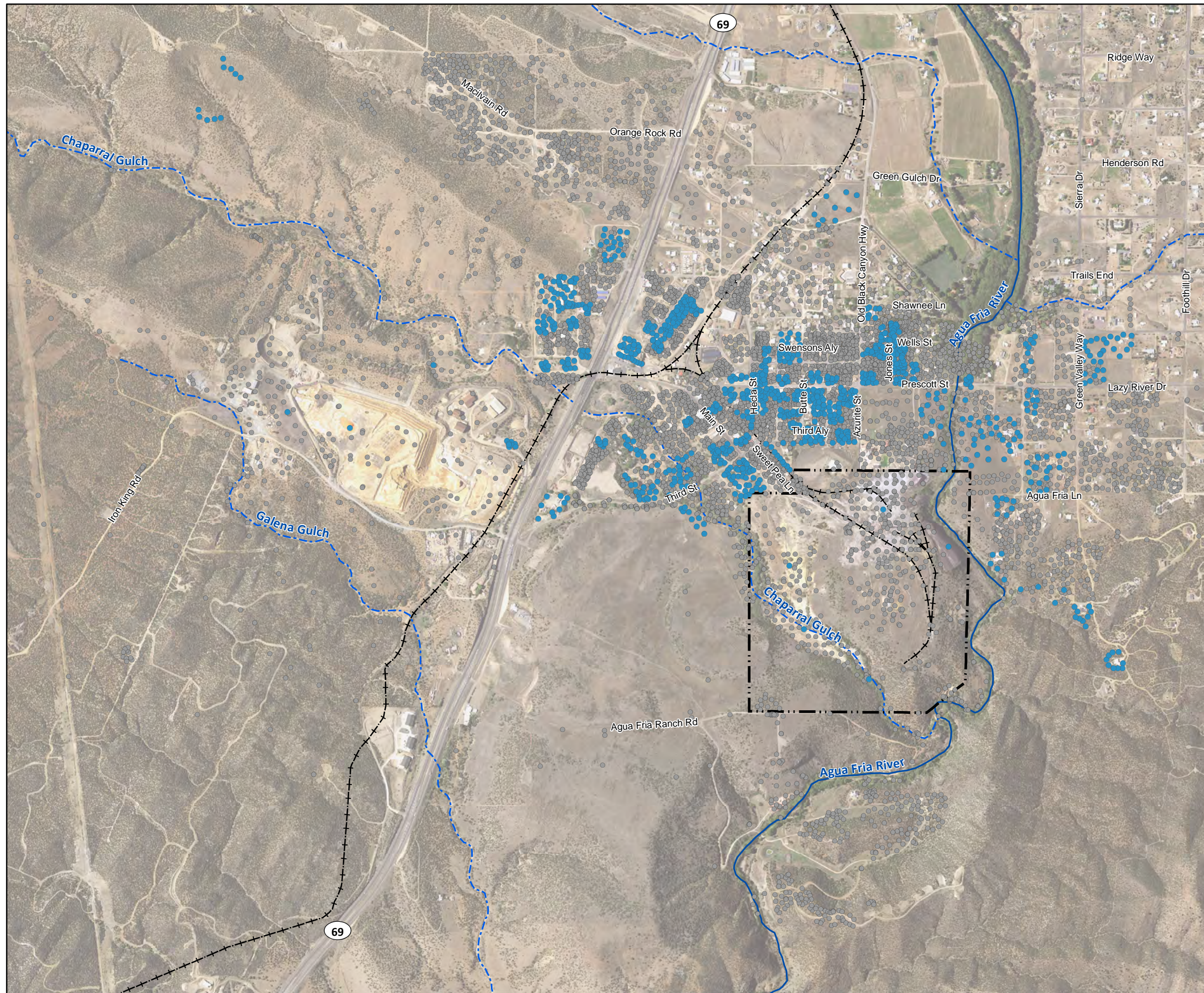
- 2008 to 2009 EA Initial RI (EA, 2010)
- Other EPA Remedial Investigations
- Historic Rail Line
- River
- - - Intermittent Drainage
- ▭ Former Iron King Mine Property
- ▭ Former Humboldt Smelter Property
- ▭ Dewey-Humboldt Town Boundary



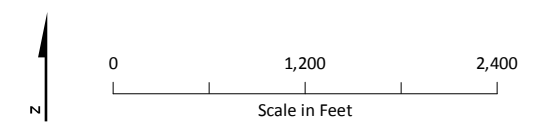
^aSurface soil samples are defined as having a sample start depth less than or equal to 2 feet below ground surface.

Notes:
 Imagery from USDA-FSA Aerial Photography Field Office Ortho Imagery (ortho_1-1_1n_s_az025_2015_1), dated 2015. Available at <https://gdg.sc.egov.usda.gov/Catalog/ProductDescription/NAIPM.html>. Accessed January 26, 2016. Underlying hillshade model derived from USGS National Elevation Dataset (grdn35w113_13), dated 2013. Available at <http://nationalmap.gov/viewer.html>. Accessed April 15, 2015.

Figure 4-1A
Phase 1 Surface Soil Sample Locations, 2008 to 2009 Initial Remedial Investigation
 Iron King Mine – Humboldt Smelter Superfund Site
 Dewey-Humboldt, Yavapai County, Arizona



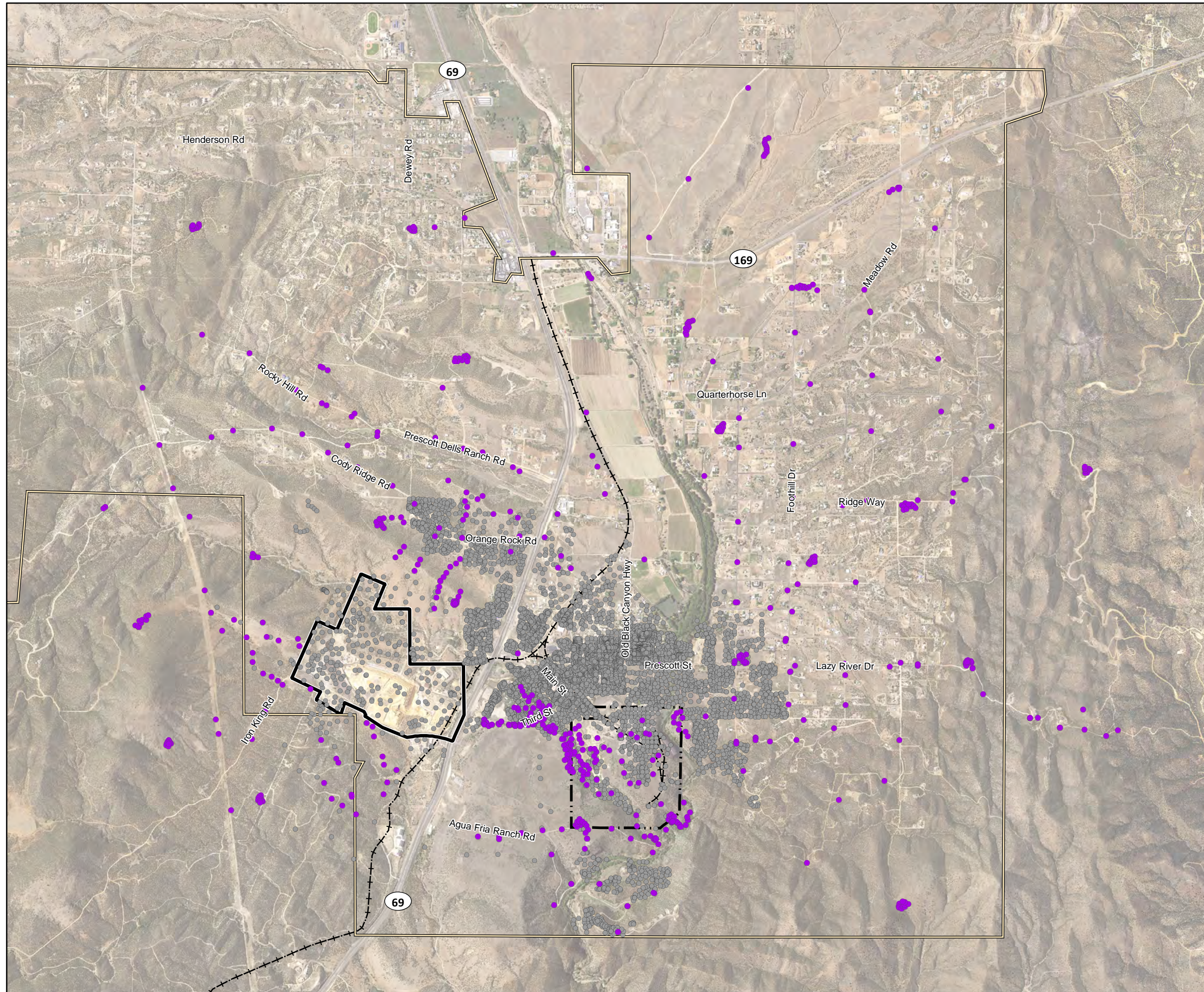
- LEGEND**
- Surface Soil Sample Location by Remedial Investigation Phase^a**
- 2010 EA Supplemental RI (EA, 2011)
 - Other EPA Remedial Investigations
 - Historic Rail Line
 - River
 - - - Intermittent Drainage
 - ▭ Former Iron King Mine Property
 - ▭ Former Humboldt Smelter Property
 - ▭ Dewey-Humboldt Town Boundary



^aSurface soil samples are defined as having a sample start depth less than or equal to 2 feet below ground surface.

Notes:
 Imagery from USDA-FSA Aerial Photography Field Office Ortho Imagery (ortho_1-1_1n_s_az025_2015_1), dated 2015. Available at <https://gdg.sc.egov.usda.gov/Catalog/ProductDescription/NAIPM.html>. Accessed January 26, 2016.
 Underlying hillshade model derived from USGS National Elevation Dataset (grdn35w113_13), dated 2013. Available at <http://nationalmap.gov/viewer.html>. Accessed April 15, 2015.

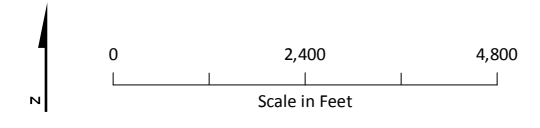
Figure 4-1B
Phase 2 Surface Soil Sample Locations,
2010 Supplemental Remedial Investigation
Iron King Mine – Humboldt Smelter Superfund Site
Dewey-Humboldt, Yavapai County, Arizona



LEGEND

Surface Soil Sample Location by Remedial Investigation Phase^a

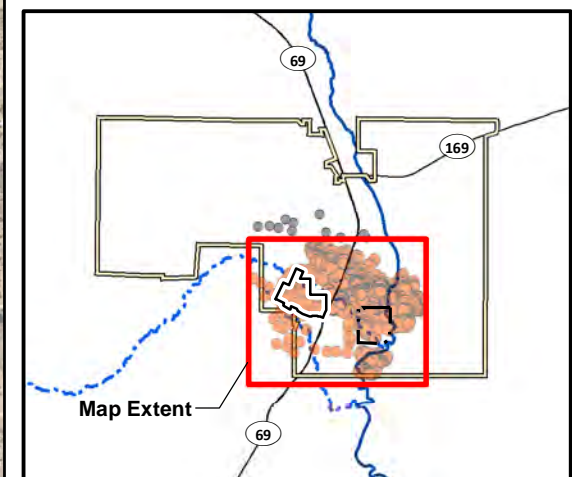
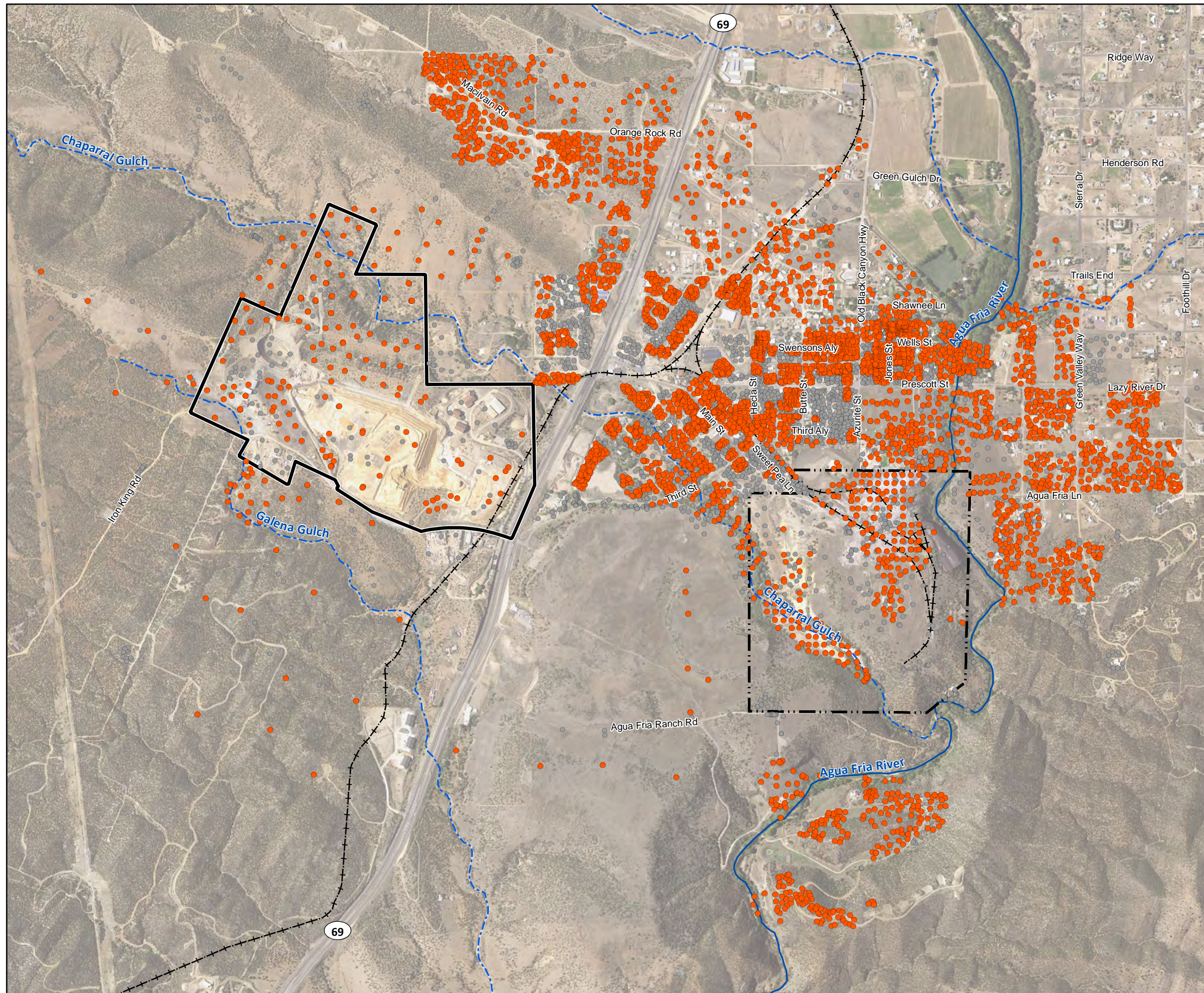
- 2012 to 2013 EPA Background and Surface Soil Sampling (EPA, 2012b)
- Other EPA Remedial Investigations
- Historic Rail Line
- River
- - - Intermittent Drainage
- ▭ Former Iron King Mine Property
- ▭ Former Humboldt Smelter Property
- ▭ Dewey-Humboldt Town Boundary



^aSurface soil samples are defined as having a sample start depth less than or equal to 2 feet below ground surface.

Notes:
 Imagery from USDA-FSA Aerial Photography Field Office Ortho Imagery (ortho_1-1_1n_s_az025_2015_1), dated 2015. Available at <https://gdg.sc.egov.usda.gov/Catalog/ProductDescription/NAIPM.html>. Accessed January 26, 2016.
 Underlying hillshade model derived from USGS National Elevation Dataset (grdn35w113_13), dated 2013. Available at <http://nationalmap.gov/viewer.html>. Accessed April 15, 2015.

Figure 4-1C
Phase 3 Surface Soil Sample Locations, 2012 to 2013 Background and Surface Soil Sampling
 Iron King Mine – Humboldt Smelter Superfund Site
 Dewey-Humboldt, Yavapai County, Arizona



LEGEND

Surface Soil Sample Location by Remedial Investigation Phase^a

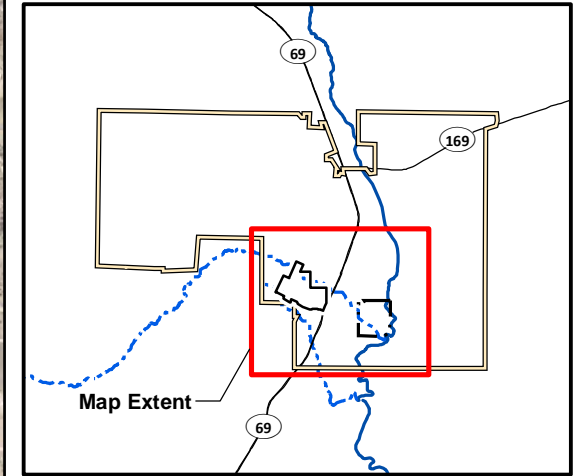
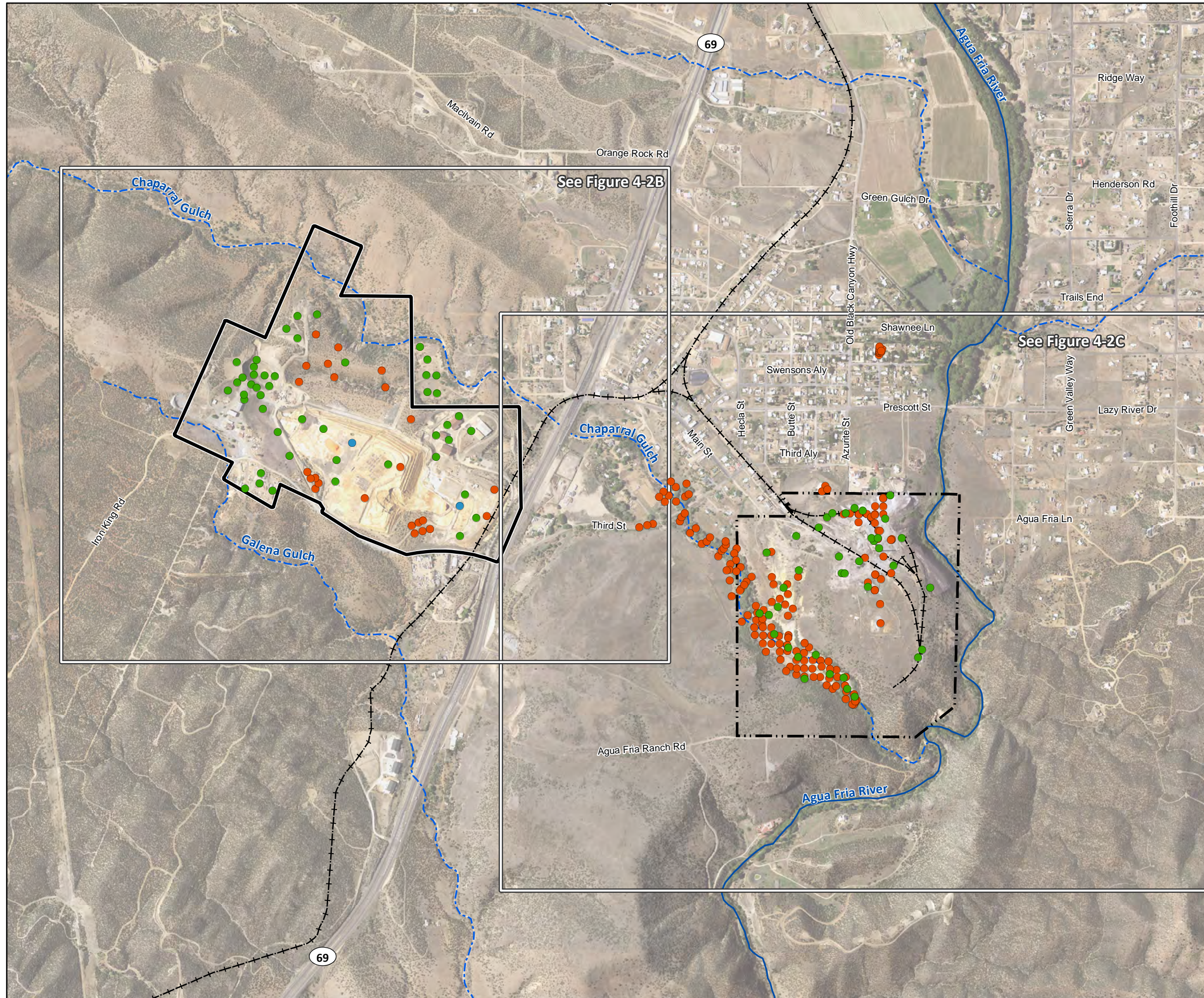
- 2013 to 2014 ERT Data Gap RI (Lockheed Martin SERAS, 2015)
- Other EPA Remedial Investigations
- Historic Rail Line
- River
- - - Intermittent Drainage
- ▭ Former Iron King Mine Property
- - - Former Humboldt Smelter Property
- ▭ Dewey-Humboldt Town Boundary

0 1,200 2,400
Scale in Feet

^aSurface soil samples are defined as having a sample start depth less than or equal to 2 feet below ground surface.

Notes:
 Imagery from USDA-FSA Aerial Photography Field Office Ortho Imagery (ortho_1-1_1n_s_az025_2015_1), dated 2015. Available at <https://gdg.sc.egov.usda.gov/Catalog/ProductDescription/NAIPM.html>. Accessed January 26, 2016. Underlying hillshade model derived from USGS National Elevation Dataset (grdn35w113_13), dated 2013. Available at <http://nationalmap.gov/viewer.html>. Accessed April 15, 2015.

Figure 4-1D
Phase 4 Surface Soil Sample Locations, 2013 to 2014 Data Gap Remedial Investigation
 Iron King Mine – Humboldt Smelter Superfund Site
 Dewey-Humboldt, Yavapai County, Arizona

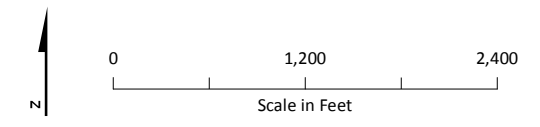


LEGEND

Subsurface Soil Sample Location by Remedial Investigation Phase^a

- 2008 EA Initial RI (EA, 2010)
- 2012 EA Supplemental RI (Not published)
- 2013 to 2014 ERT Data Gap RI (Lockheed Martin SERAS, 2015)

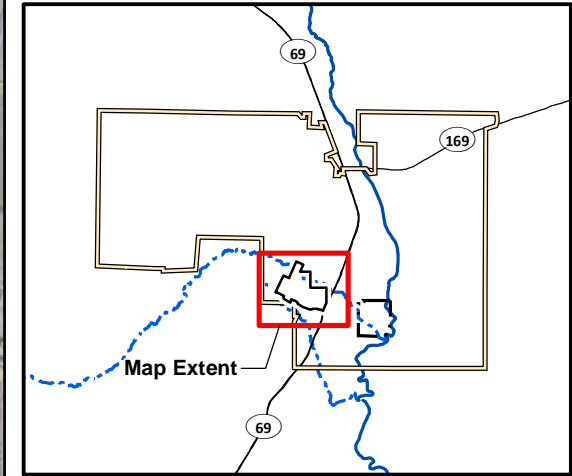
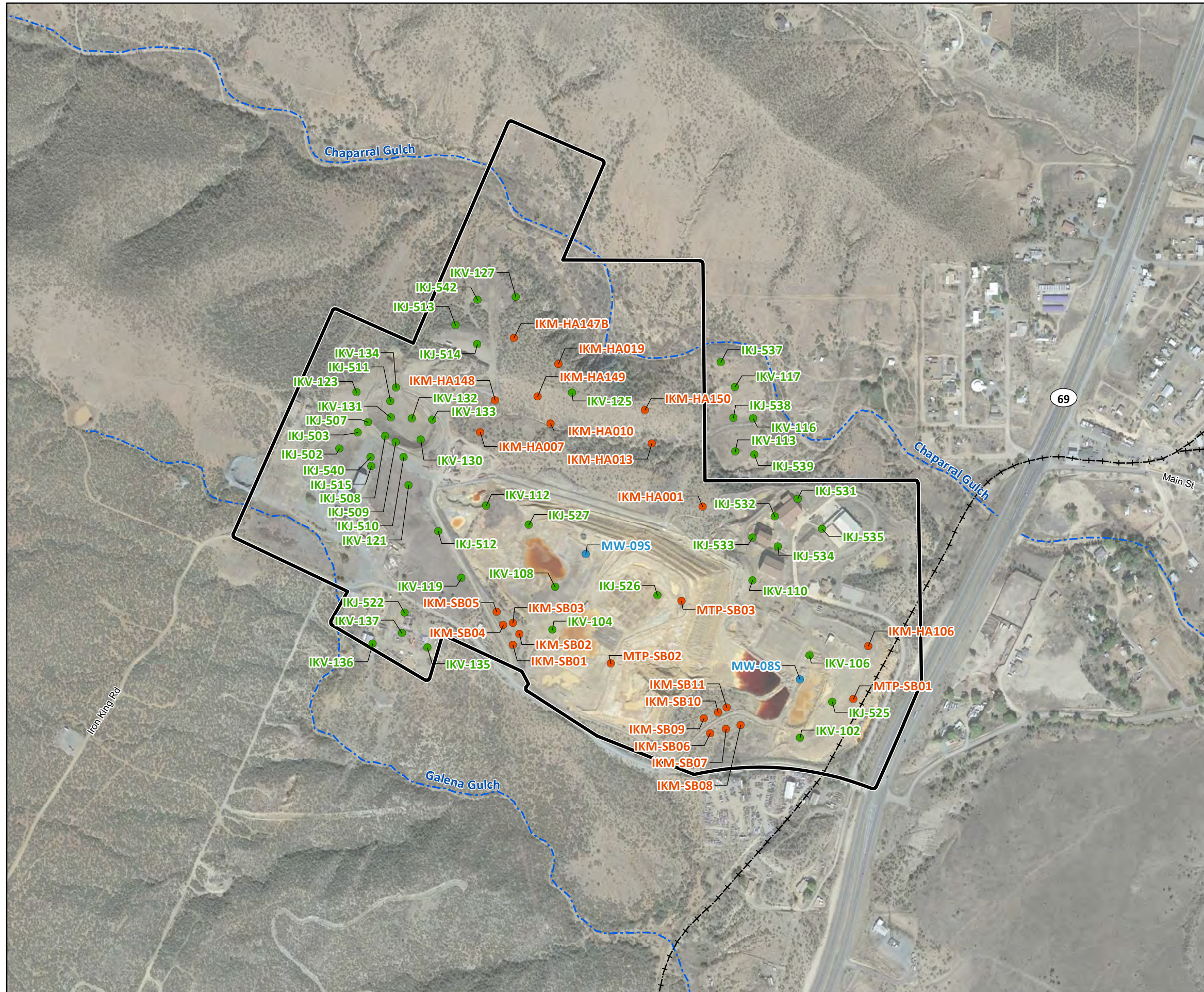
- Historic Rail Line
- River
- - - Intermittent Drainage
- ▭ Former Iron King Mine Property
- ▭ Former Humboldt Smelter Property
- ▭ Dewey-Humboldt Town Boundary



^aSubsurface soil sample locations refer to locations where at least one sample was collected with a beginning depth of greater than 2 feet below ground surface.

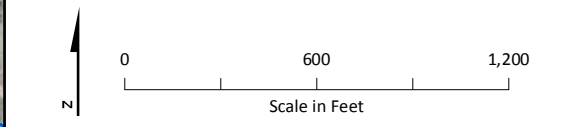
Notes:
 Imagery from USDA-FSA Aerial Photography Field Office Ortho Imagery (ortho_1-1_1n_s_az025_2015_1), dated 2015. Available at <https://gdg.sc.egov.usda.gov/Catalog/ProductDescription/NAIPM.html>. Accessed January 26, 2016. Underlying hillshade model derived from USGS National Elevation Dataset (grdn35w113_13), dated 2013. Available at <http://nationalmap.gov/viewer.html>. Accessed April 15, 2015.

Figure 4-2A
Subsurface Soil Sample Locations,
EPA Remedial Investigations – Overview
Iron King Mine – Humboldt Smelter Superfund Site
Dewey-Humboldt, Yavapai County, Arizona



- LEGEND**
- Subsurface Soil Sample Location by Remedial Investigation Phase^a**
- 2008 EA Initial RI (EA, 2010)
 - 2012 EA Supplemental RI (Not published)
 - 2013 to 2014 ERT Data Gap RI (Lockheed Martin SERAS, 2015)

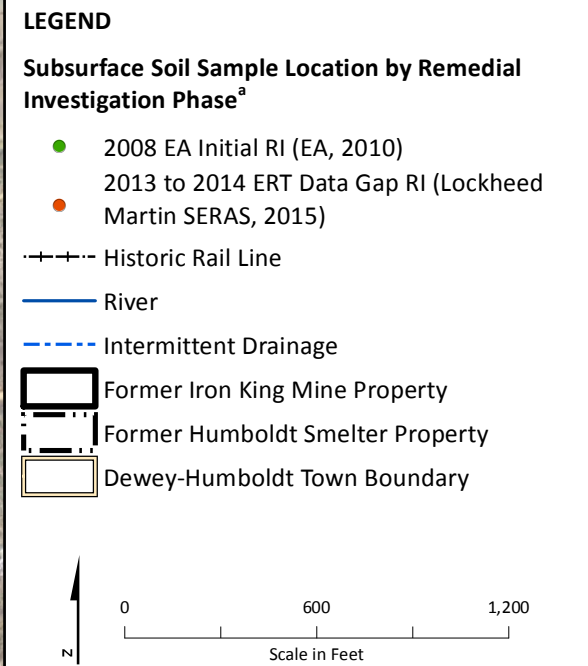
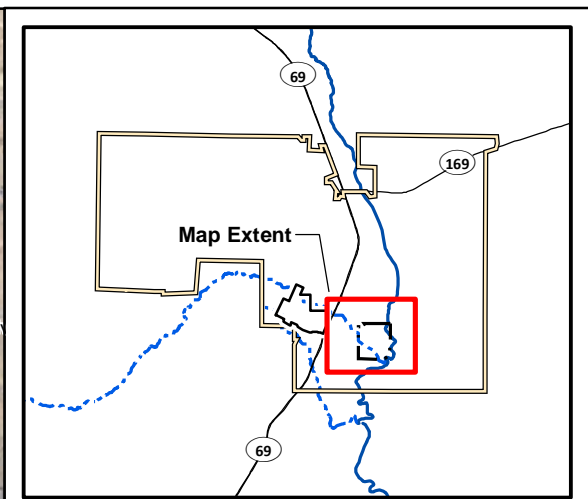
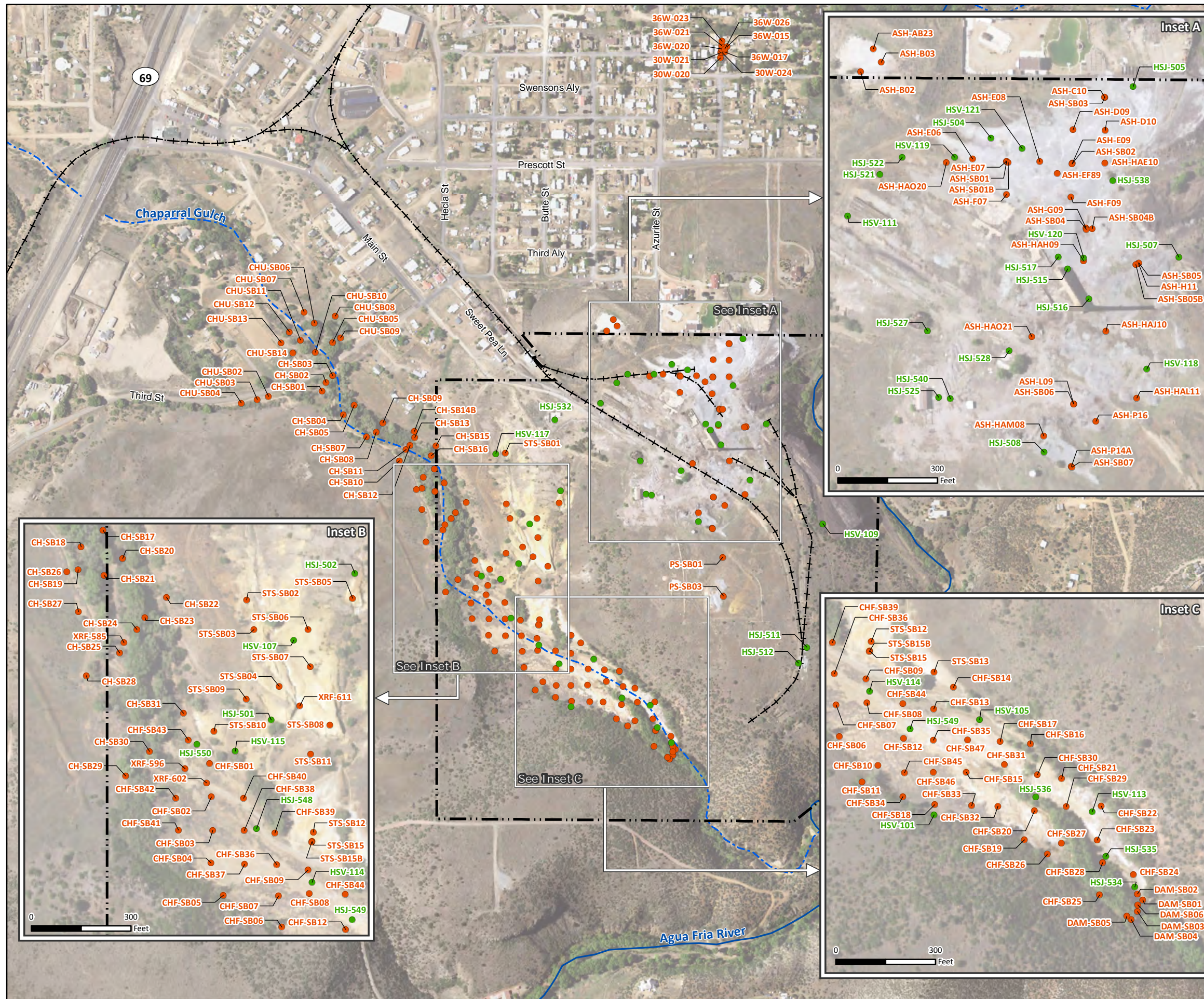
- Historic Rail Line
- River
- - - Intermittent Drainage
- ▭ Former Iron King Mine Property
- ▭ Former Humboldt Smelter Property
- ▭ Dewey-Humboldt Town Boundary



^aSubsurface soil sample locations refer to locations where at least one sample was collected with a beginning depth of greater than 2 feet below ground surface.

Notes:
 Image Source: Google Earth™; Image date November 6, 2015. Accessed February 2, 2016.
 Underlying hillshade model derived from USGS National Elevation Dataset (grdn35w113_13), dated 2013. Available at <http://nationalmap.gov/viewer.html>. Accessed April 15, 2015.

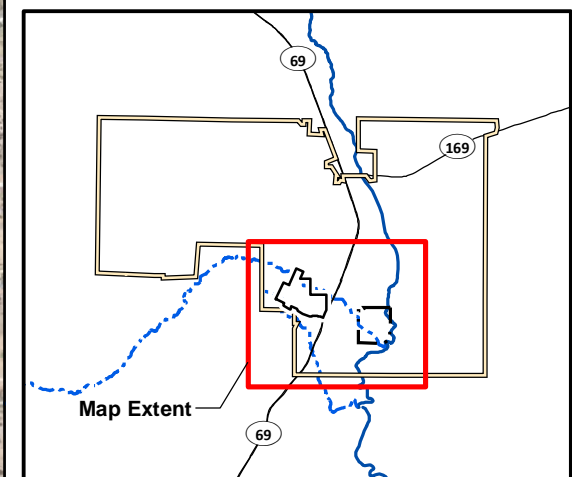
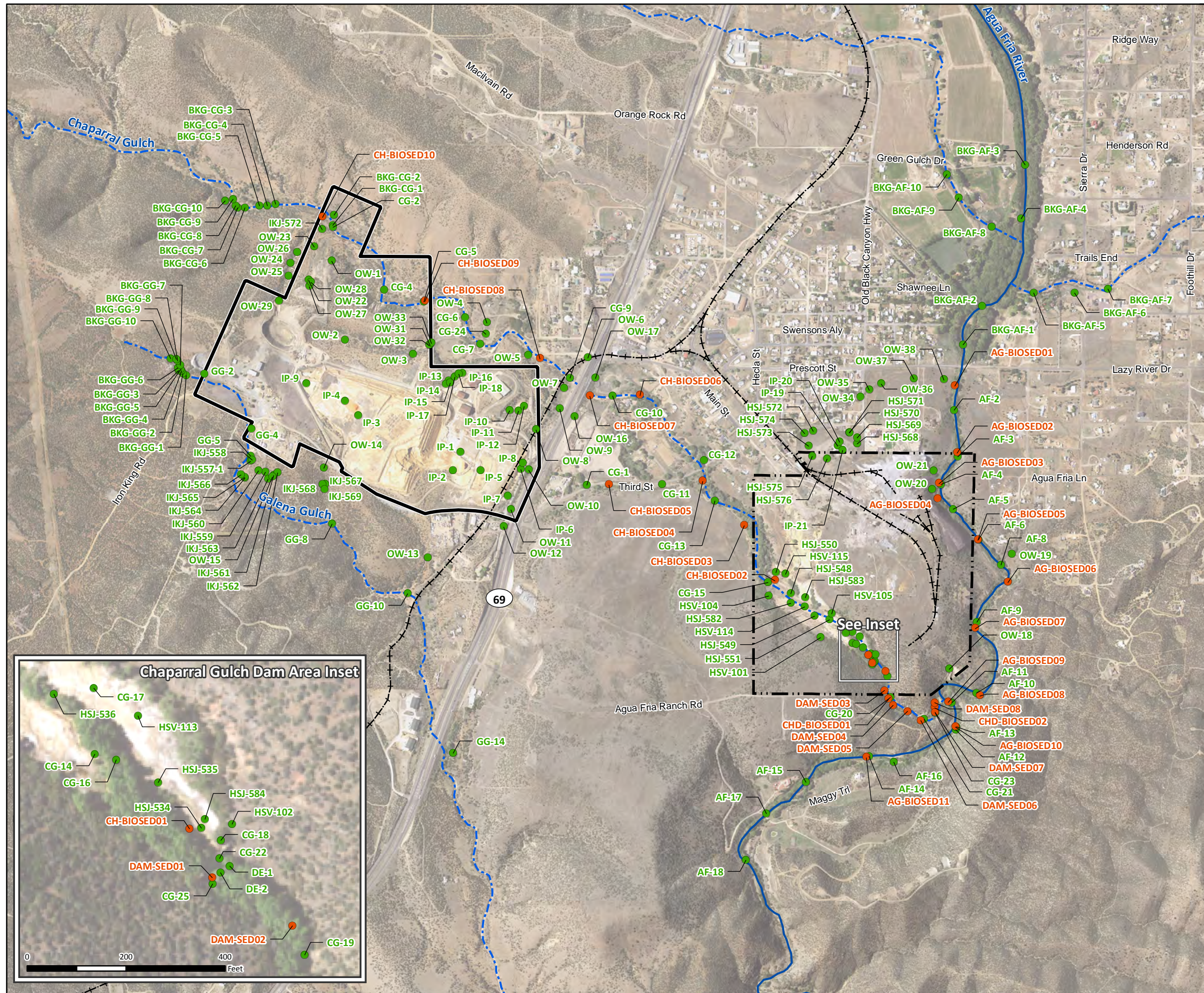
Figure 4-2B
Subsurface Soil Sample Locations,
EPA Remedial Investigations –
Former Iron King Mine
Iron King Mine – Humboldt Smelter Superfund Site
Dewey-Humboldt, Yavapai County, Arizona



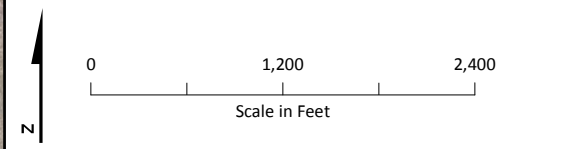
^aSubsurface soil sample locations refer to locations where at least one sample was collected with a beginning depth of greater than 2 feet below ground surface.

Notes:
 Imagery from USDA-FSA Aerial Photography Field Office Ortho Imagery (ortho_1-1_1n_s_az025_2015_1), dated 2015. Available at <https://gdg.sc.egov.usda.gov/Catalog/ProductDescription/NAIPM.html>. Accessed January 26, 2016.
 Underlying hillshade model derived from USGS National Elevation Dataset (grdn35w113_13), dated 2013. Available at <http://nationalmap.gov/viewer.html>. Accessed April 15, 2015.

Figure 4-2C
Subsurface Soil Sample Locations,
EPA Remedial Investigations –
Former Humboldt Smelter
Iron King Mine – Humboldt Smelter Superfund Site
Dewey-Humboldt, Yavapai County, Arizona



- LEGEND**
- Sediment Sample Locations by Remedial Investigation Phase**
- 2008 to 2009 EA Initial RI (EA, 2010)
 - 2014 ERT Data Gap RI (Lockheed Martin SERAS, 2015)
- Historic Rail Line
 - River
 - - - Intermittent Drainage
 - ▭ Former Iron King Mine Property
 - ▭ Former Humboldt Smelter Property
 - ▭ Dewey-Humboldt Town Boundary



Notes:
 Imagery from USDA-FSA Aerial Photography Field Office Ortho Imagery (ortho_1-1_1n_s_az025_2015_1), dated 2015. Available at <https://gdg.sc.egov.usda.gov/Catalog/ProductDescription/NAIPM.html>. Accessed January 26, 2016. Underlying hillshade model derived from USGS National Elevation Dataset (grdn35w113_13), dated 2013. Available at <http://nationalmap.gov/viewer.html>. Accessed April 15, 2015.

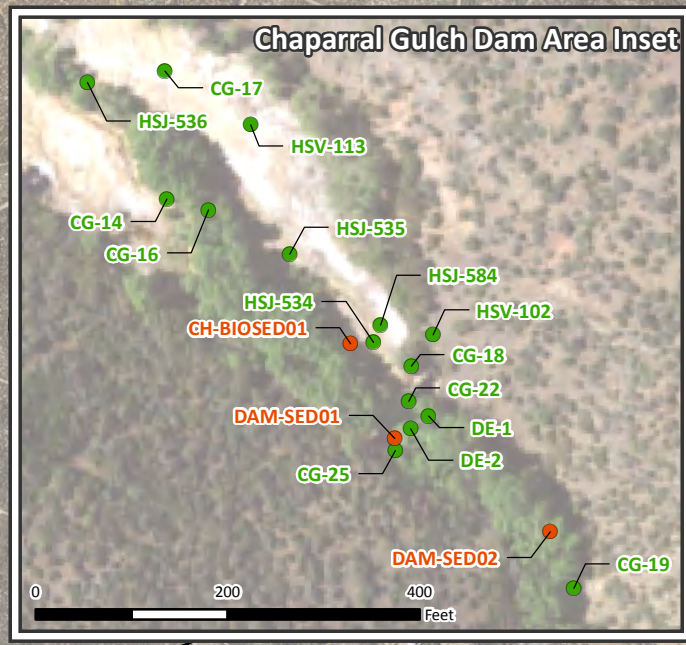
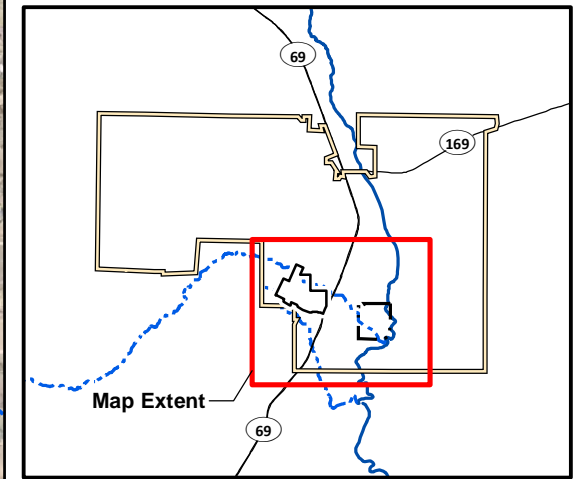
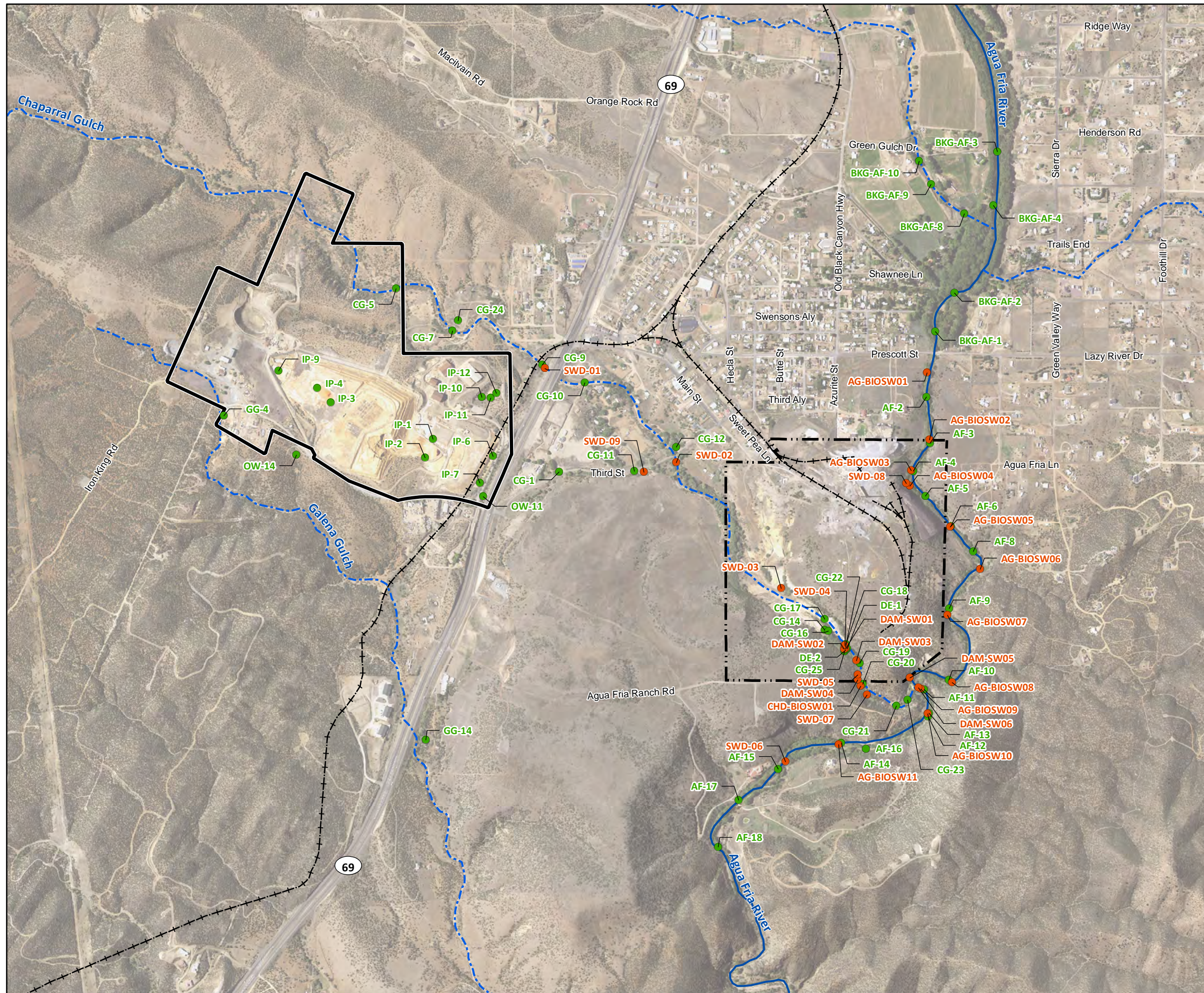


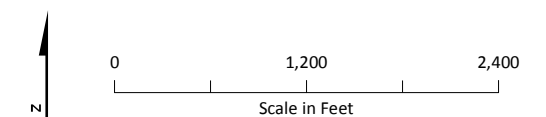
Figure 4-3
Sediment Sample Locations,
EPA Remedial Investigations
Iron King Mine – Humboldt Smelter Superfund Site
Dewey-Humboldt, Yavapai County, Arizona



LEGEND

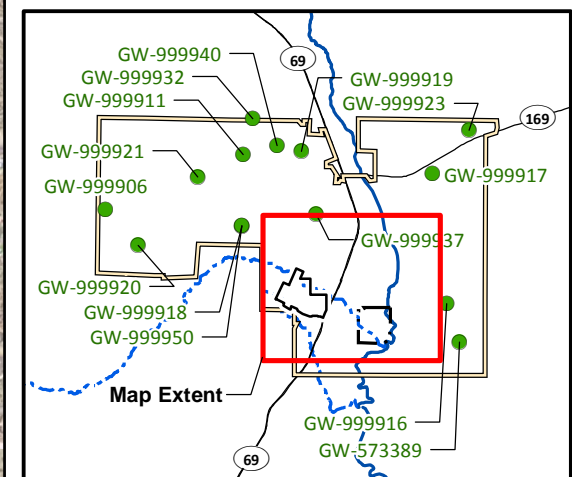
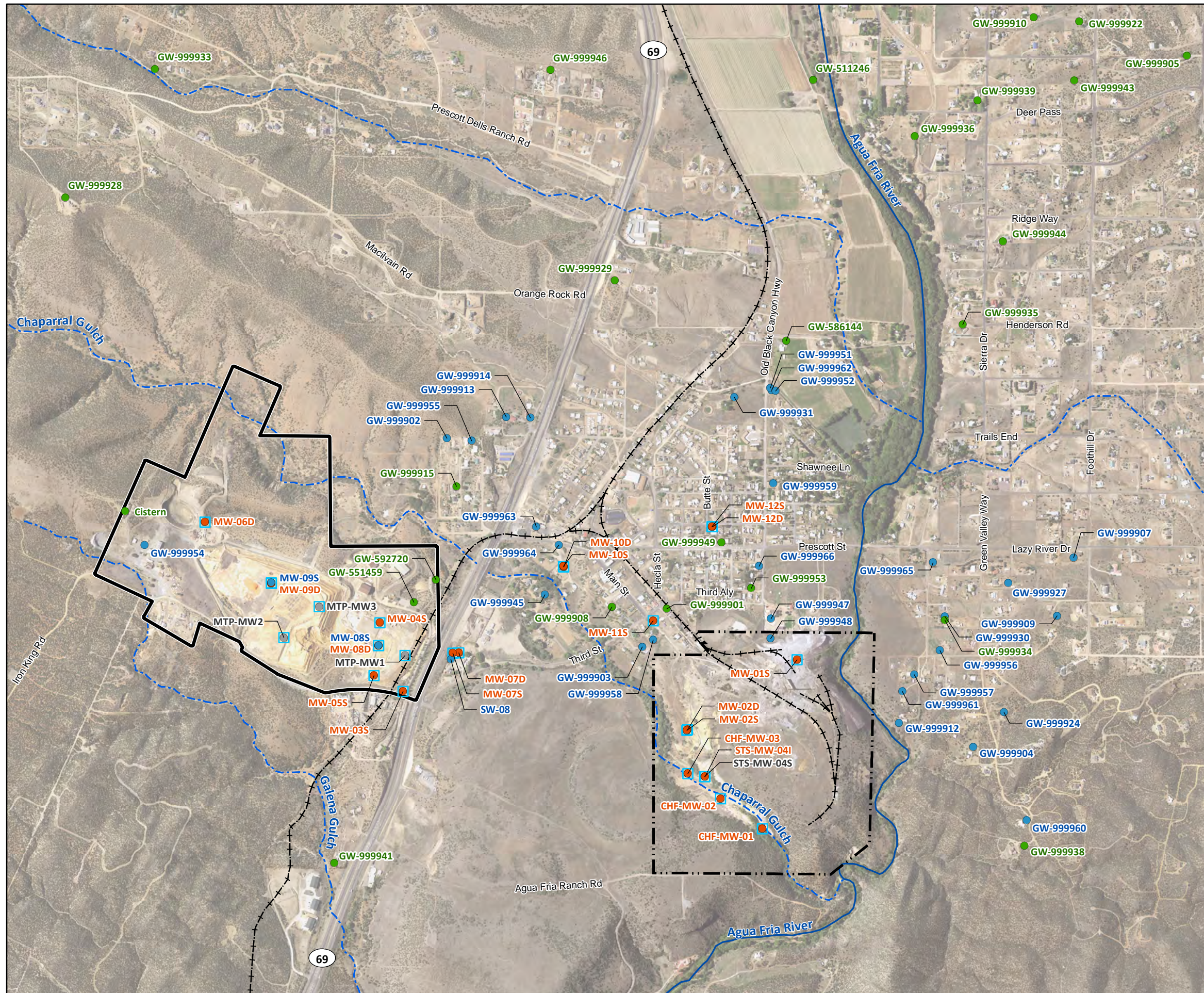
Surface Water Location by Remedial Investigation Phase

- 2008 to 2009 EA Initial RI (EA, 2010)
- 2014 ERT Data Gap RI (Lockheed Martin)
- SERAS, (2015)
- Historic Rail Line
- River
- - - Intermittent Drainage
- ▭ Former Iron King Mine Property
- ▭ Former Humboldt Smelter Property
- ▭ Dewey-Humboldt Town Boundary



Notes:
 Imagery from USDA-FSA Aerial Photography Field Office Ortho Imagery (ortho_1-1_1n_s_az025_2015_1), dated 2015. Available at <https://gdg.sc.egov.usda.gov/Catalog/ProductDescription/NAIPM.html>. Accessed January 26, 2016. Underlying hillshade model derived from USGS National Elevation Dataset (grdn35w113_13), dated 2013. Available at <http://nationalmap.gov/viewer.html>. Accessed April 15, 2015.

Figure 4-4
Surface Water Sample Locations,
EPA Remedial Investigations
Iron King Mine – Humboldt Smelter Superfund Site
Dewey-Humboldt, Yavapai County, Arizona



LEGEND

Groundwater Sample Location, Most Recent Sample Date

- Not Sampled^a
- 2008 to 2009 EA Initial RI (EA, 2010)
- 2010 and 2012 EA Supplemental RI (EA, 2011)
- 2014 ERT Data Gap RI (Lockheed Martin SERAS, 2015)
- EPA Well

--- Historic Rail Line

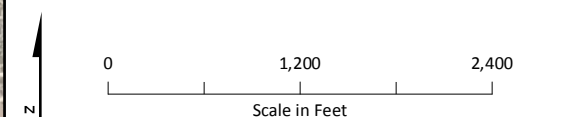
— River

- - - Intermittent Drainage

▭ Former Iron King Mine Property

▭ Former Humboldt Smelter Property

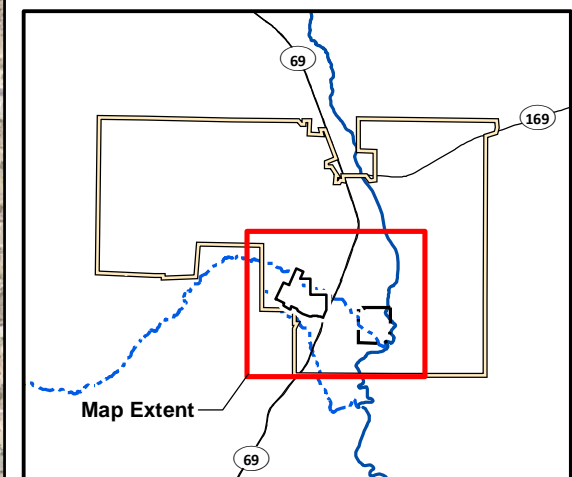
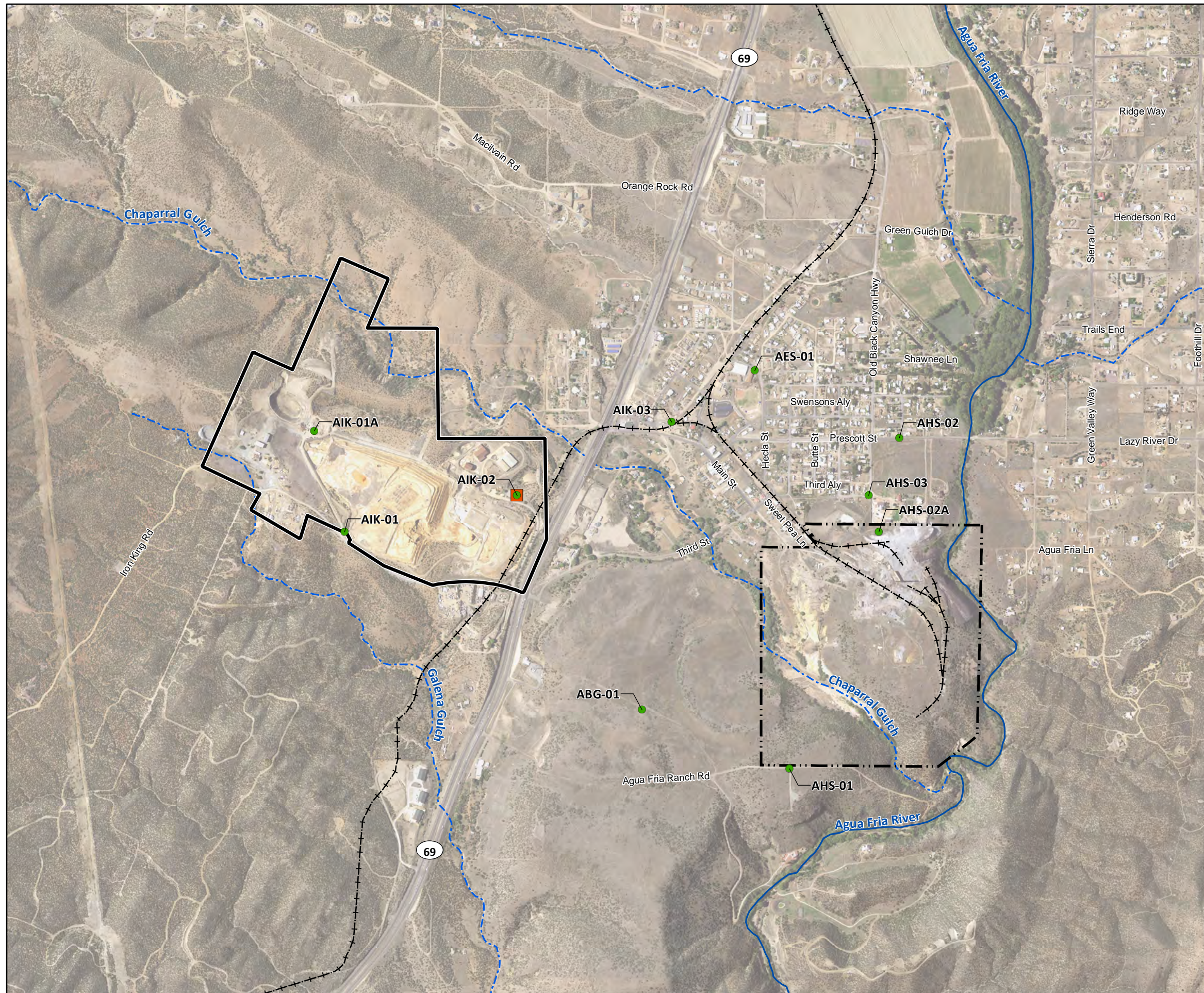
▭ Dewey-Humboldt Town Boundary



^aSTS-MW-04S, MTP-MW1, MTP-MW2, and MTP-MW3 were evaluated in 2014 but reported as dry, and no samples were collected.

Notes:
 Sixteen groundwater samples from the 2008 to 2009 EA Initial RI were collected outside of the main map extent. GW-999925 is located over 2 miles south-southwest of the Site, and GW-999926 is located approximately 10 miles south-southeast of the Site. The other fourteen sample locations are shown in the overview inset.
 Imagery from USDA-FSA Aerial Photography Field Office Ortho Imagery (ortho_1-1_1n_s_az025_2015_1), dated 2015. Available at <https://gdg.sc.egov.usda.gov/Catalog/ProductDescription/NAIPM.html>. Accessed January 26, 2016.
 Underlying hillshade model derived from USGS National Elevation Dataset (grdn35w113_13), dated 2013. Available at <http://nationalmap.gov/viewer.html>. Accessed April 15, 2015.

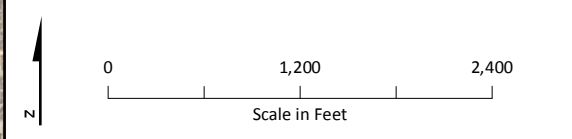
Figure 4-5
Groundwater Sample Locations,
EPA Remedial Investigations
Iron King Mine – Humboldt Smelter Superfund Site
Dewey-Humboldt, Yavapai County, Arizona



LEGEND

Air Sample Location by Remedial Investigation Phase

- 2008 to 2009 EA Initial RI (EA, 2010)
- Meteorological Station^a
- + -+ -+ Historic Rail Line
- River
- - - Intermittent Drainage
- - - - - Former Humboldt Smelter Property
- ▭ Former Iron King Mine Property
- ▭ Dewey-Humboldt Town Boundary



^aThe meteorological station monitored wind speed and direction between August 2008 and August 2009 (EA, 2010).

Notes:
 Imagery from USDA-FSA Aerial Photography Field Office Ortho Imagery (ortho_1-1_1n_s_az025_2015_1), dated 2015. Available at <https://gdg.sc.egov.usda.gov/Catalog/ProductDescription/NAIPM.html>. Accessed January 26, 2016.
 Underlying hillshade model derived from USGS National Elevation Dataset (grdn35w113_13), dated 2013. Available at <http://nationalmap.gov/viewer.html>. Accessed April 15, 2015.

Figure 4-6
Air Sample Locations,
EPA Remedial Investigations
Iron King Mine – Humboldt Smelter Superfund Site
Dewey-Humboldt, Yavapai County, Arizona