

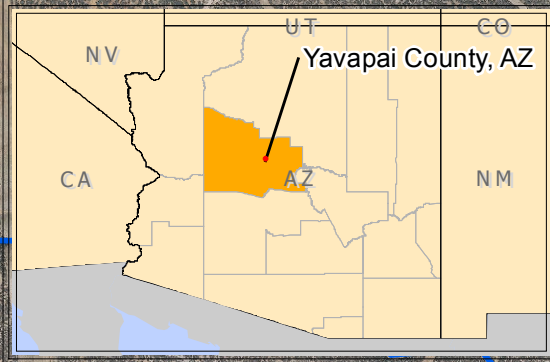
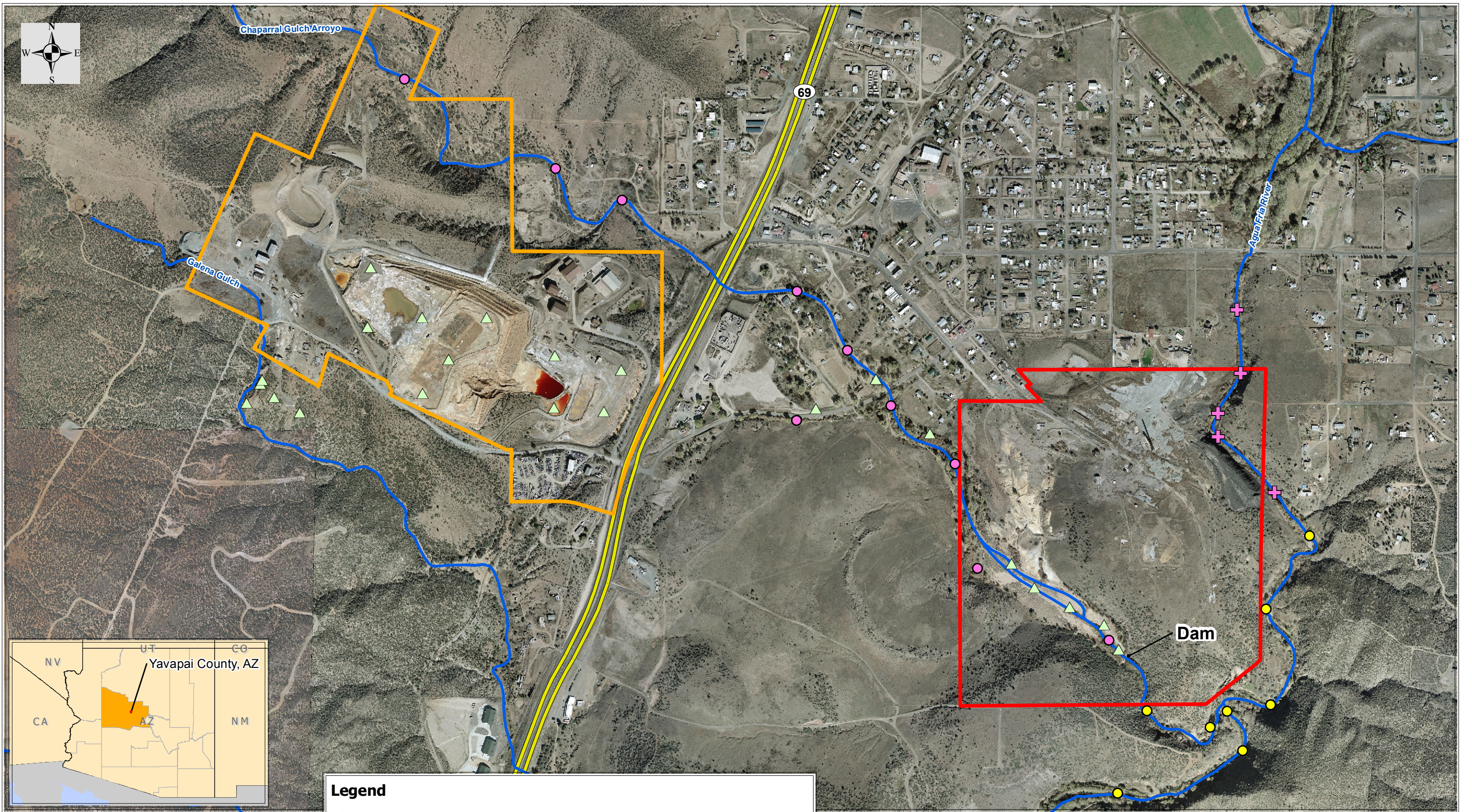
From: [Johnson, Terrence](#)
To: [DHONT, JEFF](#)
Subject: FW: IKM surface water sampling
Date: Tuesday, April 22, 2014 3:05:35 PM
Attachments: [146 PLAN Bioaccessibility BioAssmt Proposed Sampling Location f9.pdf](#)

Terrence Johnson
Environmental Scientist, US EPA ERT
4220 South Maryland Parkway
Building D, Suite 800
Las Vegas, NV
(702)-784-8022 (O)
(702)-496-0703 (C)

From: Aloysius, David L [mailto:david.l.aloysius@lmco.com]
Sent: Tuesday, April 22, 2014 10:13 AM
To: Johnson, Terrence
Subject: IKM surface water sampling

Terrence,

One file attached FYI (save/print). I'll be referring to it along with other material that has yet to be sent.



Base map created using 2010 orthoimagery,
Proposed Sample Location by digitizing.

Map Creation Date: 28 August 2013

Coordinate system: Arizona State Plane Central
FIPS: 0202
Datum: NAD83
Units: Feet

Data: g:\arcviewprojects\SERAS01\00-146

MXD file: g:\arcinfo\projects\SERAS01\SER00146_IronKingMineSite\Sampling_Plan\146_PLAN_Bioaccessibility_BioAssmt_Proposed_Sampling_Location_f9

Legend

▲ Bioaccessibility Samples

Bioassessment Samples

● Sediment

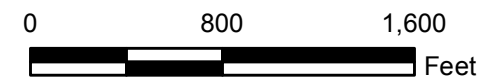
● Sediment/surface water pairs

⊕ Sediment/surface water pairs (Sediments to be analyzed for dioxins/furans)

Area of Interest

■ Iron King Mine

■ Humboldt Smelter



U.S. EPA Environmental Response Team
Scientific Engineering Response and Analytical Services
EP-W-09-031
W.A. # 0-146

Figure 9
Bioaccessibility and Bioassessment
Proposed Sampling Locations
Iron King Mine Site
Dewey-Humboldt, Arizona