

POOR LEGIBILITY

ONE OR MORE PAGES IN THIS DOCUMENT ARE DIFFICULT TO READ
DUE TO THE QUALITY OF THE ORIGINAL

SFUND RECORDS CTR
2306324

4-131-71.9-12/1/45

ARIZ

ARIZ

WATER FACILITIES: Water supplied by the Southwest Metals Co. for domestic use from the Chaparral pump Sta. located 1/4 mile S.E. of plant. For fire protection from the Agua Fria pump Sta. 1.04 mile S.W. of plant. In case of fire water is pumped by a Knowles 18"x12" fire pump direct to fire hydrants. Pressure 150 lbs. Fire pump not available when smelter is shut down. Also 2-4 Byron-Whitcomb 10,000 cent. pumps copy 600 G.P.M. ea run by 220 V. elec. motors pump water from Chaparral pond direct to mains 90 lbs. pressure.

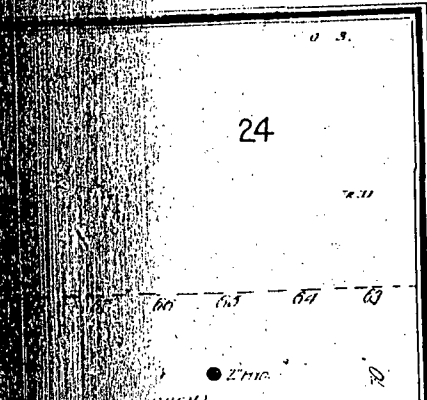
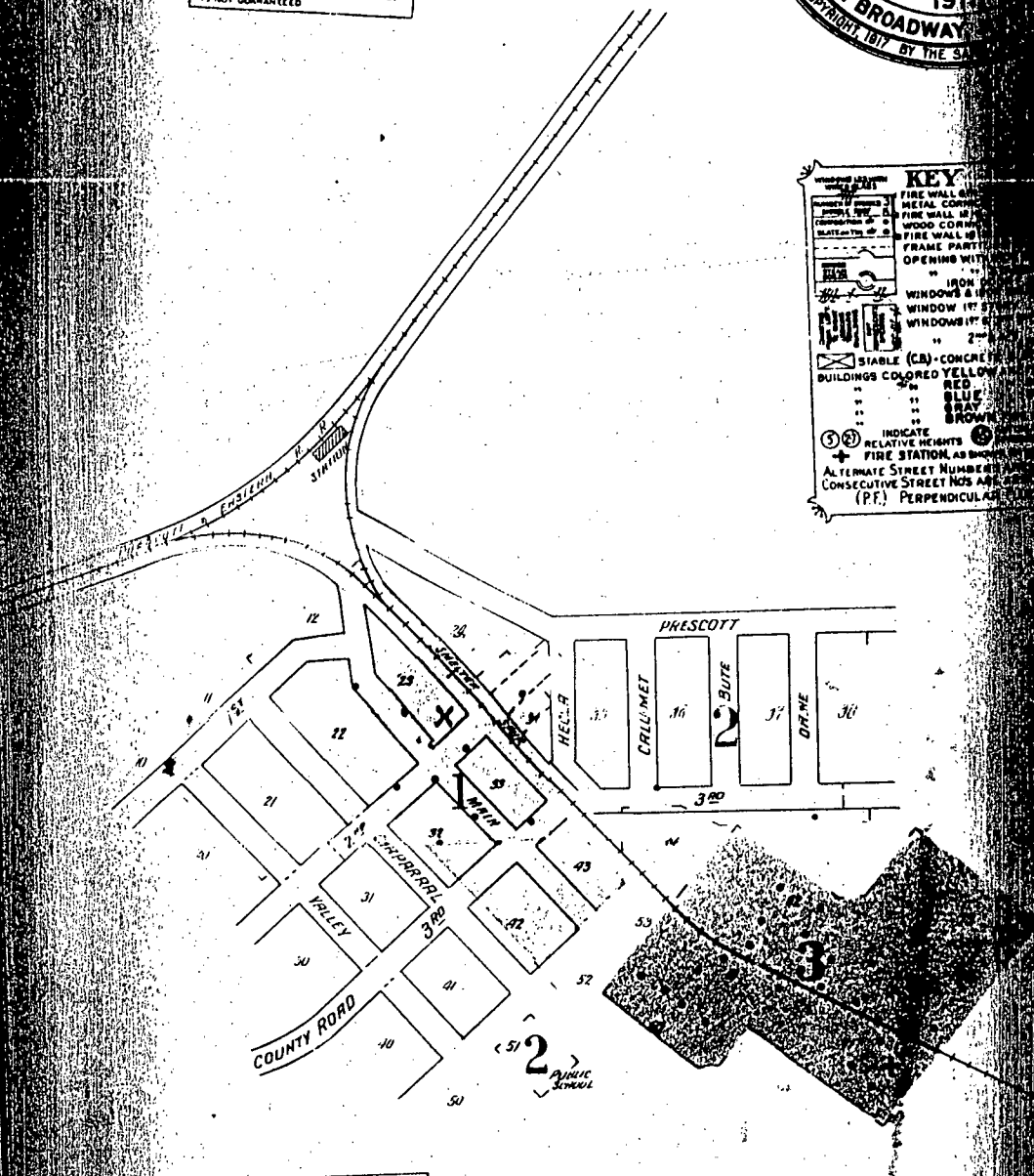
FIRE DEPT.: Apparatus owned by the Southwest Metals Co. No Organization

Apparatus:
2 Motor cars 200' hose each.
2 Pumps with chem. on wheels 100' of 2" rubber lined hose distributed at Hyd. Co. property.
1 Hose in reserve near main off of smelter.
1 Fire alarm none.



CORR. JUNE 1931

GREAT CARE HAS BEEN EXERCISED IN THE PRODUCTION OF OUR PUBLICATIONS AND OUR SERVICE, BUT ABSOLUTE ACCURACY IS NOT GUARANTEED.



2