

Yavapai  
Library  
Network  
Monthly Report



January  
2022

# MANAGER'S LOWDOWN

Hi All –

We have put together a new format for the YLN monthly report which we hope you will like. Thank you to Kelly Roberge and Chanel Wheeler for making this happen.

- Aspen News:
  - The Enterprise catalog was switched off yesterday (1/31) and we are now exclusively using the Aspen catalog.
  - We will have a rollout plan for the mobile app (LiDA) when it becomes available. Until that time, we are continuing to use our existing YLN Mobile App.
  - I am continuing to investigate and test the various options for e-commerce.
- Job Opportunities:
  - We are interviewing for two new positions: Acquisitions and ILL Specialist, and Library Transit Clerk II. Both are full-time positions with benefits. If you are interested in either of these positions, please see the [www.yavapaiaz.gov](http://www.yavapaiaz.gov) website and click on Employment Opportunities.
- New Library Updates
  - We have put a pause on adding materials to our catalog for Ash Fork Unified and Seligman Unified School Districts until we have filled the Acquisitions position at the District Office.
  - Park View/Canyon View (PVCV) is now a fully functioning member. They began actively pulling holds and transiting items last week.
- LibGuides CMS
  - We are continuing to plan and implement the new YLN website using LibGuides CMS.
  - All YLN procedures will be documented using LibGuides this year.
- Culture Pass
  - We are in the final stages of getting an agreement for all of our public and academic libraries.

- Overdrive
  - The Overdrive app will be removed from app stores on February 23rd. Patrons will be directed to download the Libby App. If someone already has the app on their device, it will still continue to function.

Until next month,

Valerie Burns



## Yavapai College Library

### Distinguished Guest Lecture Series

Spring 2022

LECTURES ARE FREE AND OPEN TO THE PUBLIC

12:00 p.m. – 1:00 p.m.



FEB  
08

**Matt Borja**

*Applied Principles in Software Engineering*

Come listen as we endeavor to extract from some of the day-to-day challenges and horror stories in software engineering, important principles that have become our guide for future work; and see which ones you can take back with you!



**UPCOMING**

**Frank Cardamone**

*Engage Your Brain for Learning, Calming, and Just Simple Ease in Living*

FEB  
21

For locations and Zoom information go to our events page at [www.yc.edu/library](http://www.yc.edu/library)

[youtube.com/user/ycplibrary](https://www.youtube.com/user/ycplibrary) [#yavapaicollegelibrary](https://www.instagram.com/yavapaicollegelibrary) [yavapaicollegelibrary](https://www.tiktok.com/yavapaicollegelibrary) [Facebook.com/YavapaiCollegeLibrary](https://www.facebook.com/YavapaiCollegeLibrary)



### YLN Marketing User Group

The YLN Marketing group would like to create a video campaign featuring as many YLN libraries as possible. The goal of this campaign is to increase awareness of all the libraries that are part of the YLN and the special services/resources they bring to Yavapai County.

This video will launch during National Library Week which is April 3-9. The theme for 2022's National Library Week is "Connect with Your Library."

The video would be live on the YLN's Facebook page and would be available for all libraries to upload to their own social media pages. More details on which hashtags to include and suggested account tags will come later.

Your library director has been sent details; talk to them if interested in participating.

# PRIORITIES

## Help Desk

A help desk request, or work order, is the submission of a problem that one encounters during the normal operation of a YLN service. Requests are generally submitted via e-mail to [help@yln.info](mailto:help@yln.info). If a request is submitted via telephone, then a YLN staff person will create the request for the submitter. Help desk requests will always be our highest priority because in some cases a member library employee cannot complete a work function until the issue is resolved.

**Total requests submitted: 136**

**Total requests resolved: 117**

**Total unresolved requests opened this month: 19**

**Total requests still open: 32**



# STATISTICS: HOLDS

| HOLDS - JANUARY 2022 |                 |                 |                 |                 |                 |
|----------------------|-----------------|-----------------|-----------------|-----------------|-----------------|
| Hold Inactive Reason | CANCELLED       | EXP_ONSHLF      | EXPIRED         | FILLED          | Total           |
| Pickup Library       | Number of Holds | Number of Holds | Number of Holds | Number of Holds | Number of Holds |
| AJS                  | 3               |                 |                 | 21              | 24              |
| ASH                  | 6               | 4               |                 | 280             | 290             |
| BAG                  | 32              | 17              |                 | 279             | 328             |
| BCC                  | 32              | 14              |                 | 554             | 600             |
| BEA                  | 40              | 68              |                 | 314             | 422             |
| BMHS                 | 3               |                 |                 |                 | 3               |
| BMMS                 | 1               | 1               |                 | 7               | 9               |
| CJES                 |                 | 1               |                 |                 | 1               |
| CLA                  | 9               | 6               |                 | 107             | 122             |
| CON                  | 39              | 11              |                 | 250             | 300             |
| COR                  | 22              | 8               |                 | 283             | 313             |
| CRK                  | 6               |                 |                 | 70              | 76              |
| CSES                 |                 |                 |                 | 4               | 4               |
| CTW                  | 281             | 206             | 11              | 3,118           | 3,616           |
| CVCL                 | 107             | 59              | 2               | 1,163           | 1,331           |
| CVLAB                |                 |                 | 1               | 3               | 4               |
| CVPL                 | 107             | 95              | 7               | 1,247           | 1,456           |
| CVUSD                | 1               | 2               |                 | 4               | 7               |
| DHL                  | 21              | 4               |                 | 148             | 173             |
| ERU                  | 4               | 8               |                 | 41              | 53              |
| GES                  | 7               |                 | 1               | 39              | 47              |
| GMMS                 |                 |                 |                 | 14              | 14              |
| HES                  | 93              | 21              |                 | 22              | 136             |
| JER                  |                 | 4               | 1               | 65              | 70              |
| LES                  | 1               | 1               |                 | 12              | 14              |
| LTS                  |                 |                 |                 | 2               | 2               |
| MAY                  | 32              | 14              |                 | 210             | 256             |
| MES                  |                 | 1               |                 |                 | 1               |
| MUHS                 | 5               | 1               |                 | 10              | 16              |
| MVES                 |                 | 1               |                 |                 | 1               |
| PAUL                 | 30              | 17              | 1               | 399             | 447             |
| PCL                  | 5               | 11              | 1               | 29              | 46              |
| PCM                  | 1               |                 |                 |                 | 1               |
| PHS                  |                 |                 |                 | 20              | 20              |
| PPL                  | 1,631           | 796             | 47              | 10,788          | 13,262          |
| PVA2                 | 298             | 77              | 4               | 2,105           | 2,484           |
| PVPL                 | 644             | 401             | 19              | 4,473           | 5,537           |
| SED                  | 291             | 145             | 9               | 2,873           | 3,318           |
| SEL                  | 67              | 36              | 1               | 537             | 641             |
| SPR                  | 31              | 11              |                 | 172             | 214             |
| TCP                  | 1               |                 |                 | 7               | 8               |

# STATISTICS: HOLDS

| Hold Inactive Reason | CANCELLED       | EXP_ONSHLF      | EXPIRED         | FILLED          | Total           |
|----------------------|-----------------|-----------------|-----------------|-----------------|-----------------|
| Pickup Library       | Number of Holds | Number of Holds | Number of Holds | Number of Holds | Number of Holds |
| THS                  | 5               |                 |                 | 8               | 13              |
| VOC                  | 184             | 99              | 6               | 1,395           | 1,684           |
| WIL                  | 12              | 2               | 2               | 187             | 203             |
| YAR                  | 31              | 26              |                 | 317             | 374             |
| YCFLD                | 19              |                 |                 | 27              | 46              |
| YCP                  | 30              | 19              | 2               | 224             | 275             |
| YCP2                 |                 |                 |                 | 2               | 2               |
| YCV                  | 5               | 10              |                 | 49              | 64              |
| YCV2                 |                 |                 |                 | 8               | 8               |
| YLN                  | 10              |                 | 1               | 16              | 27              |
| <b>Total</b>         | <b>4,147</b>    | <b>2,197</b>    | <b>116</b>      | <b>31,903</b>   | <b>38,363</b>   |

# STATISTICS: TRANSITS

| ITEMS TRANSITED - JANUARY 2022 |        |     |     |     |     |     |      |      |      |     |     |     |     |      |       |       |       |  |
|--------------------------------|--------|-----|-----|-----|-----|-----|------|------|------|-----|-----|-----|-----|------|-------|-------|-------|--|
| Station Library                |        |     |     |     |     |     |      |      |      |     |     |     |     |      |       |       |       |  |
| Item Library                   | Total  | AJS | ASH | BAG | BCC | BEA | BMHS | BMMS | CJES | CLA | CON | COR | CRK | CSES | CTW   | CVCL  | CVLAB |  |
| Total                          | 22,719 | 27  | 264 | 214 | 490 | 329 | 3    | 8    | 20   | 104 | 197 | 245 | 57  | 4    | 2,355 | 1,083 | 6     |  |
| AJS                            | 36     |     |     | 3   |     |     |      |      |      |     |     |     |     |      | 3     | 4     |       |  |
| ASH                            | 237    |     |     |     | 8   | 8   |      | 1    |      |     | 1   | 6   | 1   |      | 19    | 6     |       |  |
| BAG                            | 368    |     | 9   |     | 5   | 6   |      | 1    |      |     | 4   | 6   | 3   |      | 21    | 18    |       |  |
| BCC                            | 354    |     | 6   | 1   |     | 5   |      |      |      | 2   | 3   | 9   | 1   |      | 23    | 17    |       |  |
| BEA                            | 164    | 3   | 2   | 2   | 3   |     |      | 1    |      |     | 1   | 4   |     |      | 11    | 7     |       |  |
| BMMS                           | 23     |     |     |     |     | 1   |      |      |      |     |     |     |     |      |       |       |       |  |
| CJES                           | 19     | 1   |     | 1   | 1   |     |      |      |      |     |     |     |     |      | 1     | 1     |       |  |
| CLA                            | 208    |     | 2   | 1   | 4   | 3   |      |      |      |     | 3   | 1   | 1   |      | 13    | 8     |       |  |
| CON                            | 168    |     | 1   | 1   | 5   | 4   |      | 1    |      |     |     | 2   | 1   |      | 13    | 3     |       |  |
| COR                            | 214    |     | 2   | 5   | 6   | 6   |      |      |      | 1   | 2   |     |     |      | 19    | 10    |       |  |
| CRK                            | 92     |     | 1   | 2   | 1   | 1   |      |      |      | 2   |     | 1   |     |      | 10    |       |       |  |
| CSES                           | 11     |     |     |     |     | 1   |      |      |      |     |     |     |     |      |       |       | 1     |  |
| CTW                            | 2,305  | 1   | 29  | 18  | 54  | 25  |      |      |      | 9   | 25  | 34  | 5   |      |       | 123   |       |  |
| CVCL                           | 657    |     | 6   | 2   | 9   | 8   |      |      |      | 1   | 6   | 11  |     |      | 68    |       |       |  |
| CVHS                           | 31     |     |     |     |     | 1   |      |      |      |     | 1   |     |     |      | 4     | 1     |       |  |
| CVLAB                          | 15     |     |     |     |     |     |      |      |      |     |     |     |     |      | 2     | 1     |       |  |
| CVPL                           | 1,097  |     | 12  | 8   | 23  | 15  |      |      |      | 2   | 6   | 5   | 4   | 1    | 136   | 37    | 1     |  |
| CVUSD                          | 151    |     | 3   | 3   | 1   | 3   |      |      |      |     | 1   | 1   |     |      | 16    | 10    | 2     |  |
| DHL                            | 203    |     | 4   | 1   | 7   | 2   |      |      |      | 5   | 5   | 5   |     |      | 23    | 7     |       |  |
| ERU                            | 201    |     | 3   |     | 5   | 2   |      |      |      |     | 4   | 1   |     |      | 21    | 6     |       |  |
| GES                            | 43     |     |     | 4   |     |     |      |      |      |     |     |     |     |      | 1     | 6     |       |  |
| GHMS                           | 13     | 3   |     |     |     |     |      |      |      |     |     |     |     |      |       | 1     |       |  |
| GMMS                           | 2      |     |     |     |     |     |      | 1    |      |     |     |     |     |      |       | 1     |       |  |
| HES                            | 26     | 1   |     | 1   |     |     |      |      |      |     |     |     |     |      | 6     | 1     |       |  |
| JER                            | 170    |     | 6   |     | 1   | 4   |      |      |      | 1   |     |     |     |      | 18    | 7     |       |  |
| LES                            | 60     |     |     | 4   |     |     |      |      |      |     |     |     |     |      | 5     | 7     |       |  |
| LTS                            | 40     |     |     | 1   | 3   | 2   |      |      |      |     |     |     |     |      | 3     | 3     |       |  |
| LVES                           | 16     |     |     |     |     |     |      |      |      |     |     |     |     |      | 1     | 1     |       |  |
| MAY                            | 263    |     | 3   | 2   | 6   | 3   |      |      |      | 2   | 2   | 1   |     |      | 19    | 14    |       |  |
| MES                            | 23     | 1   |     |     |     |     |      |      |      |     |     |     | 1   |      | 1     | 1     |       |  |
| MUHS                           | 26     |     |     |     | 1   |     |      |      |      |     |     |     |     |      | 1     | 1     |       |  |
| MVES                           | 4      |     |     |     |     |     |      |      |      |     |     |     |     |      |       |       |       |  |
| ORME                           | 1      |     |     |     |     |     |      |      |      |     |     | 1   |     |      |       |       |       |  |
| PAUL                           | 109    |     | 1   | 1   | 2   | 4   |      |      |      | 1   | 2   | 1   |     |      | 4     | 4     |       |  |
| PCL                            | 219    |     | 1   | 1   | 2   | 6   |      |      |      |     |     | 2   |     |      | 22    | 6     |       |  |
| PHS                            | 42     |     |     |     |     |     |      |      |      |     |     | 1   |     |      | 2     | 2     |       |  |
| PMH                            | 32     | 2   |     |     |     |     |      |      | 14   |     |     |     |     |      |       |       |       |  |
| PPL                            | 4,850  | 6   | 59  | 79  | 159 | 77  |      | 3    | 2    | 27  | 70  | 58  | 18  | 1    | 750   | 318   | 1     |  |
| PVPL                           | 2,864  | 5   | 40  | 35  | 45  | 60  | 2    |      | 3    | 19  | 19  | 42  | 10  | 1    | 349   | 187   |       |  |
| SED                            | 2,574  | 1   | 15  | 15  | 34  | 34  |      |      |      | 9   | 12  | 14  | 5   |      | 286   | 86    | 1     |  |
| SEL                            | 189    |     | 5   | 2   | 5   | 4   |      |      |      |     |     | 3   | 2   |      | 13    | 9     |       |  |
| SPR                            | 216    |     | 2   | 4   | 12  | 2   |      |      |      |     | 2   | 4   |     |      | 16    | 9     |       |  |
| STX                            | 77     |     |     |     | 3   |     |      |      |      |     |     | 2   |     |      | 6     | 1     |       |  |
| SVES                           | 5      | 1   |     |     |     |     |      |      |      |     |     |     |     |      | 3     |       |       |  |
| TCP                            | 3      |     |     |     |     |     |      |      |      |     |     |     |     |      |       |       |       |  |
| THS                            | 45     | 2   |     |     |     |     |      | 1    |      |     | 1   |     |     | 1    | 5     | 2     |       |  |
| VOC                            | 247    |     | 3   | 4   | 5   | 2   |      |      |      | 1   |     |     |     |      | 16    | 10    |       |  |
| VVAC                           | 1      |     |     |     |     |     |      |      |      |     |     |     |     |      |       |       |       |  |
| WIL                            | 153    |     | 6   | 2   | 3   |     |      |      |      |     |     |     | 1   |      | 11    | 5     |       |  |
| YAR                            | 278    |     | 2   | 3   | 5   | 7   |      |      |      | 2   | 2   |     |     |      | 31    | 7     |       |  |
| YCFLD                          | 7      |     |     |     | 1   |     |      |      |      |     | 1   |     |     |      |       |       |       |  |
| YCP                            | 1,238  |     | 9   | 1   | 23  | 10  | 1    |      |      | 5   | 5   | 12  | 3   |      | 133   | 48    |       |  |
| YCV                            | 2,325  |     | 32  | 7   | 47  | 23  |      |      |      | 15  | 19  | 18  | 1   |      | 250   | 86    | 1     |  |
| YLN                            | 4      |     |     |     | 1   |     |      |      |      |     |     |     |     |      |       |       |       |  |

# STATISTICS: TRANSITS

## ITEMS TRANSITED - JANUARY 2022

| Station Library |       |       |     |     |     |      |     |     |     |     |      |     |     |      |      |      |     |     |       |  |
|-----------------|-------|-------|-----|-----|-----|------|-----|-----|-----|-----|------|-----|-----|------|------|------|-----|-----|-------|--|
| Item Library    | CVPL  | CVUSD | DHL | ERU | GES | GMMS | HES | JER | LES | LTS | LVES | MAY | MES | MUHS | MVES | PAUL | PCL | PHS | PPL   |  |
| Total           | 1,091 | 6     | 141 | 37  | 43  | 17   | 38  | 79  | 13  | 3   | 12   | 197 | 1   | 12   | 1    | 368  | 23  | 21  | 5,809 |  |
| AJS             | 2     |       |     |     | 1   |      | 1   |     |     |     |      |     |     |      |      |      |     |     | 9     |  |
| ASH             | 9     |       |     |     |     |      |     |     |     |     |      | 2   |     |      |      | 4    |     |     | 52    |  |
| BAG             | 15    |       |     | 1   | 2   |      | 6   |     |     |     |      | 3   |     |      |      | 27   |     |     | 96    |  |
| BCC             | 12    |       | 2   | 1   |     | 1    | 4   | 4   |     |     |      | 2   |     |      |      | 21   |     |     | 86    |  |
| BEA             | 7     |       |     |     | 1   | 2    | 1   |     |     |     |      | 2   |     |      |      | 7    |     | 1   | 38    |  |
| BMMS            | 2     |       |     |     |     |      |     |     |     | 1   |      |     |     |      |      |      |     |     | 8     |  |
| CJES            |       |       |     |     |     |      |     |     |     |     |      | 2   |     |      |      | 1    |     |     | 5     |  |
| CLA             | 5     |       | 2   |     |     |      |     |     |     |     |      | 6   |     |      |      | 14   |     |     | 44    |  |
| CON             | 7     |       |     |     |     |      |     |     |     |     |      |     |     |      |      | 5    |     |     | 38    |  |
| COR             | 9     |       | 2   |     |     |      |     | 1   |     |     |      | 4   |     |      |      | 9    |     |     | 48    |  |
| CRK             | 6     |       |     |     |     |      |     | 2   | 1   |     |      | 1   |     |      |      | 5    |     |     | 26    |  |
| CSES            |       |       |     |     | 1   |      |     |     |     |     |      |     |     |      |      |      |     |     | 1     |  |
| CTW             | 130   |       | 12  | 2   | 4   |      | 3   | 9   |     |     |      | 21  |     | 3    |      | 25   | 3   | 2   | 826   |  |
| CVCL            | 41    |       | 1   | 2   | 1   | 2    | 2   | 1   |     |     |      | 7   |     |      |      | 10   |     |     | 196   |  |
| CVHS            | 1     |       |     |     |     |      |     |     |     |     |      | 1   |     |      |      | 1    |     |     | 7     |  |
| CVLAB           |       | 1     |     |     |     |      |     |     |     |     |      |     |     |      |      |      |     |     | 6     |  |
| CVPL            |       | 3     | 1   | 1   | 3   | 2    |     | 3   |     |     |      | 9   |     |      |      | 23   |     | 2   | 353   |  |
| CVUSD           | 8     |       | 1   |     | 1   |      |     |     |     |     |      | 1   |     |      |      |      |     | 1   | 44    |  |
| DHL             | 12    |       |     |     | 3   |      |     | 1   |     |     |      | 3   |     |      |      | 15   |     |     | 33    |  |
| ERU             | 7     |       | 1   |     |     |      |     | 1   |     |     |      | 3   |     |      |      | 2    |     |     | 72    |  |
| GES             | 3     |       |     |     |     |      |     |     |     |     |      |     |     |      |      |      |     |     | 10    |  |
| GHMS            | 2     |       |     |     |     | 1    |     |     |     |     |      |     |     |      |      |      |     |     |       |  |
| GMMS            |       |       |     |     |     |      |     |     |     |     |      |     |     |      |      |      |     |     |       |  |
| HES             | 1     |       |     |     |     |      |     |     |     |     |      |     |     |      |      |      |     |     | 7     |  |
| JER             | 5     |       | 2   |     |     |      |     |     |     |     |      | 1   |     |      |      | 1    |     |     | 54    |  |
| LES             | 3     |       |     | 1   |     | 1    | 1   |     |     |     |      |     |     |      |      |      |     |     | 17    |  |
| LTS             | 2     |       |     |     | 4   |      |     |     |     |     |      |     |     |      |      | 1    |     |     | 7     |  |
| LVES            | 1     |       | 1   |     |     |      |     |     |     |     |      |     |     |      |      |      |     |     | 7     |  |
| MAY             | 4     |       | 3   | 1   | 1   |      | 1   |     |     |     |      |     |     |      |      | 19   |     |     | 60    |  |
| MES             |       |       |     |     |     |      |     |     |     |     |      |     |     |      |      | 1    |     |     | 3     |  |
| MUHS            |       |       | 1   |     |     |      |     |     |     |     |      |     |     |      |      |      | 1   |     | 8     |  |
| MVES            |       |       |     |     |     |      |     |     |     |     |      |     |     |      |      |      |     |     | 1     |  |
| ORME            |       |       |     |     |     |      |     |     |     |     |      |     |     |      |      |      |     |     |       |  |
| PAUL            | 6     |       |     |     |     |      | 1   | 1   |     |     |      |     |     |      |      |      |     |     | 32    |  |
| PCL             | 9     |       |     |     |     |      |     | 2   |     |     |      |     |     | 1    |      | 4    |     |     | 69    |  |
| PHS             | 1     |       | 1   |     |     |      |     |     |     |     |      |     |     |      |      | 2    |     |     | 20    |  |
| PMH             |       |       |     |     | 1   |      | 1   |     |     |     | 11   |     |     |      |      |      |     |     | 2     |  |
| PPL             | 363   | 2     | 45  | 13  | 9   | 3    | 3   | 22  | 4   |     | 1    | 57  |     |      | 1    | 57   | 5   | 11  |       |  |
| PVPL            | 146   |       | 27  | 2   | 4   |      | 9   | 10  | 1   | 2   |      | 17  | 1   | 1    |      | 23   | 3   | 2   | 1,236 |  |
| SED             | 103   |       | 7   | 3   | 1   | 5    |     | 3   | 1   |     |      | 12  |     | 3    |      | 25   | 1   | 2   | 795   |  |
| SEL             | 6     |       | 1   |     |     |      | 1   |     |     |     |      | 4   |     |      |      | 4    |     |     | 58    |  |
| SPR             | 9     |       | 2   |     |     |      |     |     |     |     |      | 2   |     |      |      | 10   |     |     | 56    |  |
| STX             | 8     |       |     |     |     |      |     |     |     |     |      | 1   |     |      |      | 5    |     |     | 17    |  |
| SVES            |       |       |     |     |     |      |     |     |     |     |      |     |     |      |      |      |     |     |       |  |
| TCP             |       |       |     |     |     |      |     |     |     |     |      |     |     |      |      |      |     |     | 3     |  |
| THS             | 3     |       | 1   |     | 1   |      |     | 1   |     |     |      |     |     |      |      |      |     |     | 12    |  |
| VOC             | 2     |       | 1   | 1   |     |      |     |     |     |     |      |     |     |      |      | 1    |     |     | 57    |  |
| VVAC            |       |       |     |     |     |      |     |     | 1   |     |      |     |     |      |      |      |     |     |       |  |
| WIL             | 2     |       | 1   |     | 3   |      |     |     |     |     |      | 5   |     |      |      | 10   |     |     | 43    |  |
| YAR             | 13    |       | 2   | 1   |     |      | 2   |     |     |     |      | 3   |     |      |      | 7    |     |     | 70    |  |
| YCFLD           |       |       |     |     |     |      |     |     |     |     |      | 1   |     |      |      |      |     |     |       |  |
| YCP             | 41    |       | 8   | 4   | 2   |      | 2   | 7   | 1   |     |      | 6   |     | 3    |      | 17   | 6   |     | 394   |  |
| YCV             | 85    |       | 16  | 4   |     |      |     | 11  | 4   |     |      | 21  |     | 1    |      | 12   | 4   |     | 783   |  |
| YLN             |       |       |     |     |     |      |     |     |     |     |      |     |     |      |      |      |     |     |       |  |



# STATISTICS: TRANSITS

| ITEMS TRANSITED - JANUARY 2022 |      |       |       |     |     |      |     |     |       |     |     |       |     |     |     |
|--------------------------------|------|-------|-------|-----|-----|------|-----|-----|-------|-----|-----|-------|-----|-----|-----|
| Station Library                |      |       |       |     |     |      |     |     |       |     |     |       |     |     |     |
| Item Library                   | PVA2 | PVPL  | SED   | SEL | SPR | SVES | TCP | THS | VOC   | WIL | YAR | YCFLD | YCP | YCV | YLN |
| Total                          | 11   | 4,635 | 1,942 | 484 | 191 | 1    | 7   | 8   | 1,358 | 208 | 277 | 22    | 180 | 46  | 31  |
| AJS                            |      | 6     | 3     |     | 2   |      |     | 1   | 1     |     |     |       |     |     |     |
| ASH                            |      | 70    | 13    | 7   | 10  |      |     |     | 6     | 1   | 7   | 3     | 3   |     |     |
| BAG                            |      | 105   | 16    | 6   | 5   |      |     |     | 4     | 5   | 3   | 1     |     |     |     |
| BCC                            |      | 75    | 37    | 9   | 5   |      |     |     | 11    | 4   | 7   | 2     |     |     | 4   |
| BEA                            |      | 42    | 13    | 1   | 3   |      |     |     | 5     |     | 3   | 1     | 2   | 1   |     |
| BMMS                           |      | 9     |       |     | 1   |      |     |     |       |     |     |       | 1   |     |     |
| CJES                           |      | 6     |       |     |     |      |     |     |       |     |     |       |     |     |     |
| CLA                            |      | 51    | 20    | 3   | 5   |      |     |     | 10    | 6   | 3   | 1     |     | 2   |     |
| CON                            |      | 50    | 15    | 5   | 4   |      |     |     |       | 2   | 5   | 3     | 1   | 2   |     |
| COR                            |      | 51    | 14    | 4   | 4   |      |     |     | 5     | 7   | 3   |       | 2   |     |     |
| CRK                            |      | 19    | 3     | 3   | 3   |      |     |     | 2     |     | 3   |       |     |     |     |
| CSES                           |      | 6     |       |     | 1   |      |     |     |       |     |     |       |     |     |     |
| CTW                            |      | 521   | 187   | 47  | 8   |      | 1   | 2   | 99    | 21  | 32  | 2     | 14  | 5   | 3   |
| CVCL                           | 1    | 165   | 55    | 8   | 11  |      |     |     | 30    | 3   | 2   |       | 6   | 1   | 1   |
| CVHS                           |      | 7     | 5     |     |     |      |     |     | 1     |     |     |       | 1   |     |     |
| CVLAB                          |      | 5     |       |     |     |      |     |     |       |     |     |       |     |     |     |
| CVPL                           |      | 260   | 96    | 17  | 9   |      |     |     | 44    | 5   | 11  | 1     | 2   | 2   |     |
| CVUSD                          |      | 39    | 9     |     | 2   |      |     |     | 3     | 1   |     |       | 1   |     |     |
| DHL                            |      | 37    | 16    | 4   | 2   |      |     |     | 5     | 1   | 6   | 1     | 1   |     | 4   |
| ERU                            |      | 35    | 17    | 10  | 1   |      |     | 1   | 5     | 1   |     | 1     | 1   |     | 1   |
| GES                            |      | 15    | 2     |     | 1   |      |     |     |       |     |     |       | 1   |     |     |
| GHMS                           |      | 6     |       |     |     |      |     |     |       |     |     |       |     |     |     |
| GMMS                           |      |       |       |     |     |      |     |     |       |     |     |       |     |     |     |
| HES                            |      | 8     |       |     | 1   |      |     |     |       |     |     |       |     |     |     |
| JER                            |      | 36    | 18    | 2   | 1   |      |     |     | 9     |     | 2   |       | 2   |     |     |
| LES                            |      | 18    | 2     |     | 1   |      |     |     |       |     |     |       |     |     |     |
| LTS                            |      | 14    |       |     |     |      |     |     |       |     |     |       |     |     |     |
| LVES                           |      | 5     |       |     |     |      |     |     |       |     |     |       |     |     |     |
| MAY                            |      | 58    | 22    | 11  | 6   |      |     |     | 11    | 3   | 5   |       | 2   | 3   | 1   |
| MES                            |      | 10    | 4     |     |     |      |     |     | 1     |     |     |       |     |     |     |
| MUHS                           |      | 8     | 2     | 1   | 1   |      |     |     |       | 1   |     |       |     |     |     |
| MVES                           |      | 3     |       |     |     |      |     |     |       |     |     |       |     |     |     |
| ORME                           |      |       |       |     |     |      |     |     |       |     |     |       |     |     |     |
| PAUL                           |      | 32    | 5     | 1   |     |      |     | 1   | 4     | 2   | 3   |       | 1   |     |     |
| PCL                            |      | 36    | 41    |     | 6   |      |     |     | 7     | 1   | 1   |       | 2   |     |     |
| PHS                            |      | 5     | 4     |     | 1   |      |     | 1   | 1     | 1   |     |       |     |     |     |
| PMH                            |      |       |       |     |     | 1    |     |     |       |     |     |       |     |     |     |
| PPL                            | 2    | 1,445 | 559   | 121 | 23  |      | 3   | 1   | 290   | 58  | 61  | 2     | 45  | 11  | 5   |
| PVPL                           | 7    |       | 263   | 50  | 26  |      | 1   | 1   | 124   | 27  | 36  | 1     | 23  | 3   | 1   |
| SED                            | 1    | 495   |       | 37  | 6   |      |     |     | 489   | 21  | 25  |       | 23  | 2   | 2   |
| SEL                            |      | 40    | 16    |     | 6   |      |     |     | 4     | 2   | 2   | 1     | 1   |     |     |
| SPR                            |      | 62    | 7     | 7   |     |      |     |     | 3     | 1   | 6   |       |     |     |     |
| STX                            |      | 12    | 5     | 4   | 3   |      |     |     |       | 1   |     |       | 9   |     |     |
| SVES                           |      | 1     |       |     |     |      |     |     |       |     |     |       |     |     |     |
| TCP                            |      |       |       |     |     |      |     |     |       |     |     |       |     |     |     |
| THS                            |      | 14    | 1     |     |     |      |     |     |       |     |     |       |     |     |     |
| VOC                            |      | 28    | 111   | 3   | 1   |      |     |     |       |     | 1   |       |     |     |     |
| VVAC                           |      |       |       |     |     |      |     |     |       |     |     |       |     |     |     |
| WIL                            |      | 24    | 6     | 6   | 4   |      |     |     | 10    |     | 3   |       | 3   | 1   | 4   |
| YAR                            |      | 62    | 27    | 9   | 4   |      |     |     | 9     | 6   |     |       | 2   | 1   | 1   |
| YCFLD                          |      |       |       | 2   | 2   |      |     |     |       |     |     |       |     |     |     |
| YCP                            |      | 227   | 123   | 43  | 11  |      |     |     | 68    | 4   | 7   |       |     | 12  | 2   |
| YCV                            |      | 410   | 205   | 63  | 11  |      | 2   |     | 97    | 23  | 40  | 1     | 31  |     | 2   |
| YLN                            |      | 2     |       |     |     |      |     |     |       |     |     | 1     |     |     |     |

# STATISTICS: DISCARDED & ADDED

| DISCARDS - JANUARY 2022 |                          |
|-------------------------|--------------------------|
| Station Library         | Library Use Transactions |
| AJS                     | 10                       |
| ASH                     | 105                      |
| BAG                     | 6                        |
| BCC                     | 75                       |
| BEA                     | 10                       |
| BMHS                    | 7                        |
| BMMS                    | 2                        |
| CJES                    | 15                       |
| CLA                     | 2                        |
| CON                     | 33                       |
| COR                     | 14                       |
| CRK                     | 2                        |
| CTW                     | 125                      |
| CVCL                    | 219                      |
| CVHS                    | 407                      |
| CVPL                    | 145                      |
| CVUSD                   | 1                        |
| ERU                     | 274                      |
| GHMS                    | 276                      |
| JER                     | 2                        |
| LES                     | 14                       |
| MES                     | 180                      |
| PAUL                    | 2                        |
| PCL                     | 100                      |
| PPL                     | 973                      |
| PVPL                    | 585                      |
| SED                     | 339                      |
| SEL                     | 3                        |
| THS                     | 18                       |
| WIL                     | 20                       |
| YAR                     | 3                        |
| YCFLD                   | 1                        |
| YCP                     | 16                       |
| YCV                     | 162                      |
| <b>Total</b>            | <b>4,146</b>             |

| ITEMS ADDED - JANUARY 2022 |              |
|----------------------------|--------------|
| Item Library               | Total Copies |
| AFSD                       | 463          |
| AJS                        | 37           |
| ASH                        | 38           |
| BAG                        | 69           |
| BCC                        | 34           |
| BEA                        | 80           |
| BMHS                       | 68           |
| CJES                       | 73           |
| CLA                        | 65           |
| CON                        | 38           |
| COR                        | 90           |
| CRK                        | 27           |
| CSES                       | 81           |
| CTW                        | 264          |
| CVCL                       | 200          |
| CVHS                       | 302          |
| CVLAB                      | 1            |
| CVPL                       | 222          |
| CVUSD                      | 47           |
| DHL                        | 31           |
| ERU                        | 88           |
| GHMS                       | 2            |
| HES                        | 15           |
| JER                        | 25           |
| LES                        | 47           |
| LTS                        | 15           |
| LVES                       | 1            |
| MAY                        | 56           |
| MES                        | 128          |
| MUHS                       | 6            |
| MVES                       | 4            |
| PAUL                       | 87           |
| PCL                        | 62           |
| PHS                        | 6            |
| PPL                        | 939          |
| PVPL                       | 601          |
| SED                        | 366          |
| SEL                        | 46           |
| SHM                        | 48           |
| SPR                        | 45           |
| STX                        | 3            |
| SUSD                       | 453          |
| THS                        | 41           |
| VOC                        | 85           |
| WIL                        | 53           |
| YAR                        | 236          |
| YCP                        | 211          |
| YCV                        | 136          |
| YLN                        | 4315         |
| <b>Grand Total</b>         | <b>10350</b> |

| TOTAL ITEMS - JANUARY 2022 |                  |
|----------------------------|------------------|
| Item Library               | Total Copies     |
| AFSD                       | 463              |
| AJS                        | 14,702           |
| ASH                        | 5,796            |
| BAG                        | 14,999           |
| BCC                        | 11,244           |
| BEA                        | 11,859           |
| BMHS                       | 30,426           |
| BMMS                       | 7,868            |
| CJES                       | 11,142           |
| CLA                        | 9,097            |
| CON                        | 6,326            |
| COR                        | 6,509            |
| CRK                        | 3,570            |
| CSES                       | 3,467            |
| CTW                        | 92,690           |
| CVCL                       | 31,637           |
| CVHS                       | 15,175           |
| CVLAB                      | 4,189            |
| CVPL                       | 52,142           |
| CVUSD                      | 30,221           |
| DHL                        | 5,805            |
| ERU                        | 28,476           |
| GES                        | 12,182           |
| GHMS                       | 10,117           |
| GMMS                       | 9,683            |
| HES                        | 8,362            |
| JER                        | 14,197           |
| LAW                        | 1,784            |
| LES                        | 13,063           |
| LTS                        | 13,128           |
| LVES                       | 7,368            |
| MAY                        | 10,184           |
| MES                        | 6,703            |
| MUHS                       | 4,919            |
| MVES                       | 9,605            |
| ORME                       | 9,181            |
| PAUL                       | 6,864            |
| PCL                        | 35,357           |
| PHS                        | 11,293           |
| PMH                        | 9,371            |
| PPL                        | 138,749          |
| PVCV                       | 4,672            |
| PVPL                       | 89,827           |
| SED                        | 65,070           |
| SEL                        | 6,569            |
| SHM                        | 7,867            |
| SPR                        | 5,185            |
| STX                        | 839              |
| SUSD                       | 1,850            |
| SVES                       | 6,765            |
| TCP                        | 1,250            |
| THS                        | 11,574           |
| VOC                        | 3,467            |
| VVAC                       | 1,958            |
| WIL                        | 4,939            |
| YAR                        | 9,122            |
| YAV                        | 3,948            |
| YCC                        | 2,157            |
| YCFLD                      | 85               |
| YCP                        | 62,595           |
| YCV                        | 49,846           |
| YLN                        | 291,550          |
| <b>Total</b>               | <b>1,361,048</b> |

# STATISTICS: USERS

| NEW USERS - JANUARY 2022 |                 |
|--------------------------|-----------------|
| User Library             | Number of Users |
| AFSD                     | 296             |
| AJS                      | 8               |
| ASH                      | 5               |
| BAG                      | 5               |
| BCC                      | 17              |
| BEA                      | 10              |
| BMHS                     | 24              |
| BMMS                     | 3               |
| CJES                     | 3               |
| CLA                      | 7               |
| CON                      | 9               |
| COR                      | 17              |
| CRK                      | 1               |
| CSES                     | 7               |
| CTW                      | 140             |
| CVCL                     | 77              |
| CVHS                     | 9               |
| CVPL                     | 67              |
| CVUSD                    | 28              |
| DHL                      | 8               |
| ERU                      | 110             |
| GES                      | 12              |
| GHMS                     | 4               |
| GMMS                     | 9               |
| HES                      | 4               |
| JER                      | 1               |
| LES                      | 9               |
| LTS                      | 5               |
| LVES                     | 2               |
| MAY                      | 9               |
| MES                      | 9               |
| MUHS                     | 9               |
| MVES                     | 10              |
| PAUL                     | 15              |
| PCL                      | 166             |
| PHS                      | 36              |
| PMH                      | 5               |
| PPL                      | 302             |
| PVCV                     | 169             |
| PVPL                     | 302             |
| SED                      | 130             |
| SEL                      | 8               |
| SPR                      | 5               |
| SUSD                     | 7               |
| THS                      | 11              |
| VOC                      | 48              |
| WIL                      | 4               |
| YAR                      | 6               |
| YCP                      | 29              |
| YCV                      | 10              |
| YLN                      | 1               |
| <b>Grand Total</b>       | <b>2188</b>     |

| TOTAL USERS - JANUARY 2022 |                 |
|----------------------------|-----------------|
| User Library               | Number of Users |
| AFSD                       | 300             |
| AJS                        | 901             |
| ASH                        | 684             |
| BAG                        | 499             |
| BCC                        | 910             |
| BEA                        | 1,015           |
| BMHS                       | 2,181           |
| BMMS                       | 444             |
| CJES                       | 502             |
| CLA                        | 485             |
| CON                        | 571             |
| COR                        | 804             |
| CRK                        | 128             |
| CSES                       | 872             |
| CTW                        | 10,403          |
| CVCL                       | 4,493           |
| CVHS                       | 1,471           |
| CVLAB                      | 16              |
| CVPL                       | 4,878           |
| CVUSD                      | 2,250           |
| DHL                        | 555             |
| ERU                        | 6,353           |
| GES                        | 730             |
| GHMS                       | 636             |
| GMMS                       | 623             |
| HES                        | 452             |
| JER                        | 198             |
| LES                        | 631             |
| LTS                        | 1,063           |
| LVES                       | 507             |
| MAY                        | 794             |
| MES                        | 1,475           |
| MHS                        | 1               |
| MUHS                       | 1,935           |
| MVES                       | 502             |
| ORME                       | 522             |
| PAUL                       | 505             |
| PCL                        | 3,955           |
| PHS                        | 1,804           |
| PMH                        | 953             |
| PPL                        | 23,029          |
| PVA2                       | 10              |
| PVCV                       | 180             |
| PVPL                       | 19,613          |
| SED                        | 8,177           |
| SEL                        | 587             |
| SHM                        | 1               |
| SPR                        | 408             |
| SUSD                       | 167             |
| SVES                       | 48              |
| TCP                        | 23              |
| THS                        | 1,051           |
| VOC                        | 1,246           |
| WIL                        | 200             |
| YAR                        | 483             |
| YCFLD                      | 12              |
| YCP                        | 1,273           |
| YCV                        | 695             |
| YLN                        | 8               |
| <b>Total</b>               | <b>115,212</b>  |

# STATISTICS: BILLS

## PATRON BILLS - JANUARY 2022

| Bill Library Code | # of Bills | Bill Amount       | Bill Payment Amount |
|-------------------|------------|-------------------|---------------------|
| <b>Total</b>      | <b>291</b> | <b>\$1,416.86</b> | <b>\$1,435.66</b>   |
| BEA               | 1          | \$10.00           | \$10.00             |
| COR               | 1          | \$15.08           | \$15.08             |
| CTW               | 48         | \$47.00           | \$67.00             |
| CVCL              | 1          | \$18.00           | \$18.00             |
| CVLAB             | 8          | \$64.00           | \$64.00             |
| CVPL              | 33         | \$83.50           | \$83.50             |
| CVUSD             | 2          | \$17.95           | \$17.95             |
| GMMS              | 1          | \$10.99           | \$10.99             |
| LTS               | 1          | \$7.00            | \$7.00              |
| MUHS              | 1          | \$3.00            | \$3.00              |
| PCL               | 3          | \$9.50            | \$9.50              |
| PMH               | 3          | \$74.99           | \$74.99             |
| PPL               | 50         | \$511.25          | \$511.25            |
| PVPL              | 25         | \$279.00          | \$279.00            |
| SED               | 73         | \$122.90          | \$122.20            |
| TCP               | 11         | \$10.70           | \$10.70             |
| VOC               | 23         | \$63.55           | \$63.05             |
| YCP               | 6          | \$68.45           | \$68.45             |



# STATISTICS: CIRCULATION

| CIRCULATION - JANUARY 2022 |              |                    |            |             |
|----------------------------|--------------|--------------------|------------|-------------|
| Station Library            | Client Types | Charge Item Part B | Renew Item | Grand Total |
| AJS                        | None         | 1                  |            | 1           |
|                            | WorkFlows    | 1621               | 176        | 1797        |
|                            | Aspen        |                    | 4          | 4           |
| AJS Total                  |              | 1622               | 180        | 1802        |
| ASH                        | BC Mobile    |                    | 8          | 8           |
|                            | Enterprise   |                    | 3          | 3           |
|                            | SIP          | 750                | 10         | 760         |
|                            | WorkFlows    | 44                 | 190        | 234         |
| ASH Total                  |              | 794                | 211        | 1005        |
| BAG                        | BC Mobile    |                    | 16         | 16          |
|                            | SIP          | 593                | 2          | 595         |
|                            | WorkFlows    | 195                | 507        | 702         |
| BAG Total                  |              | 788                | 525        | 1313        |
| BCC                        | BC Mobile    |                    | 3          | 3           |
|                            | None         | 2                  |            | 2           |
|                            | SIP          | 808                | 5          | 813         |
|                            | WorkFlows    | 359                | 418        | 777         |
| BCC Total                  |              | 1169               | 426        | 1595        |
| BEA                        | Enterprise   |                    | 36         | 36          |
|                            | None         | 31                 |            | 31          |
|                            | WorkFlows    | 1428               | 624        | 2052        |
| BEA Total                  |              | 1459               | 660        | 2119        |
| BMHS                       | WorkFlows    | 534                | 11         | 545         |
| BMHS Total                 |              | 534                | 11         | 545         |
| BMMS                       | WorkFlows    | 357                | 128        | 485         |
| BMMS Total                 |              | 357                | 128        | 485         |
| CJES                       | WorkFlows    | 1176               | 78         | 1254        |
| CJES Total                 |              | 1176               | 78         | 1254        |
| CLA                        | Enterprise   |                    | 6          | 6           |
|                            | SIP          |                    | 1          | 1           |
|                            | WorkFlows    | 229                | 88         | 317         |
| CLA Total                  |              | 229                | 95         | 324         |
| CON                        | BC Mobile    |                    | 2          | 2           |
|                            | Enterprise   |                    | 7          | 7           |
|                            | SIP          | 550                | 5          | 555         |
|                            | WorkFlows    | 90                 | 241        | 331         |
| CON Total                  |              | 640                | 255        | 895         |
| COR                        | BC Mobile    |                    | 4          | 4           |
|                            | Enterprise   |                    | 22         | 22          |
|                            | SIP          | 763                | 1          | 764         |
|                            | WorkFlows    | 58                 | 176        | 234         |
| COR Total                  |              | 821                | 203        | 1024        |
| CRK                        | BC Mobile    |                    | 2          | 2           |
|                            | None         | 65                 |            | 65          |
|                            | WorkFlows    | 132                | 43         | 175         |
| CRK Total                  |              | 197                | 45         | 242         |
| CSES                       | WorkFlows    | 277                | 3          | 280         |
| CSES Total                 |              | 277                | 3          | 280         |
| CTW                        | BC Mobile    |                    | 86         | 86          |
|                            | Enterprise   |                    | 55         | 55          |
|                            | None         | 1                  |            | 1           |
|                            | SIP          | 9851               | 395        | 10246       |
|                            | WorkFlows    | 446                | 4166       | 4612        |
|                            | Aspen        |                    | 208        | 208         |
| CTW Total                  |              | 10298              | 4910       | 15208       |

|             |            |      |      |      |
|-------------|------------|------|------|------|
| CVCL        | BC Mobile  |      | 23   | 23   |
|             | Enterprise |      | 166  | 166  |
|             | SIP        | 2330 | 9    | 2339 |
|             | WorkFlows  | 1655 | 1548 | 3203 |
|             | Aspen      |      | 21   | 21   |
| CVCL Total  |            | 3985 | 1767 | 5752 |
| CVHS        | None       | 1    |      | 1    |
|             | WorkFlows  | 139  | 1    | 140  |
| CVHS Total  |            | 140  | 1    | 141  |
| CVLAB       | WorkFlows  | 1045 | 54   | 1099 |
| CVLAB Total |            | 1045 | 54   | 1099 |
| CVPL        | BC Mobile  |      | 115  | 115  |
|             | Enterprise |      | 139  | 139  |
|             | None       | 1    |      | 1    |
|             | SIP        | 1226 | 14   | 1240 |
|             | WorkFlows  | 3223 | 2026 | 5249 |
|             | Aspen      |      | 39   | 39   |
| CVPL Total  |            | 4450 | 2333 | 6783 |
| CVUSD       | SIP        | 187  | 7    | 194  |
|             | WorkFlows  | 423  | 13   | 436  |
| CVUSD Total |            | 610  | 20   | 630  |
| DHL         | BC Mobile  |      | 23   | 23   |
|             | Enterprise |      | 8    | 8    |
|             | SIP        | 333  |      | 333  |
|             | WorkFlows  | 95   | 165  | 260  |
| DHL Total   |            | 428  | 196  | 624  |
| ERU         | Enterprise |      | 24   | 24   |
|             | SIP        | 28   | 2    | 30   |
|             | WorkFlows  | 818  | 170  | 988  |
| ERU Total   |            | 846  | 196  | 1042 |
| GES         | WorkFlows  | 1575 | 104  | 1679 |
| GES Total   |            | 1575 | 104  | 1679 |
| GHMS        | WorkFlows  | 81   |      | 81   |
| GHMS Total  |            | 81   |      | 81   |
| GMMS        | WorkFlows  | 205  | 33   | 238  |
| GMMS Total  |            | 205  | 33   | 238  |
| HES         | WorkFlows  | 1183 | 132  | 1315 |
| HES Total   |            | 1183 | 132  | 1315 |
| JER         | WorkFlows  | 150  | 105  | 255  |
| JER Total   |            | 150  | 105  | 255  |
| LES         | WorkFlows  | 1552 | 402  | 1954 |
| LES Total   |            | 1552 | 402  | 1954 |
| LTS         | WorkFlows  | 1493 | 31   | 1524 |
| LTS Total   |            | 1493 | 31   | 1524 |
| LVES        | WorkFlows  | 813  | 41   | 854  |
| LVES Total  |            | 813  | 41   | 854  |
| MAY         | BC Mobile  |      | 4    | 4    |
|             | Enterprise |      | 1    | 1    |
|             | SIP        | 441  |      | 441  |
|             | WorkFlows  | 225  | 257  | 482  |
| MAY Total   |            | 666  | 262  | 928  |
| MES         | WorkFlows  | 954  | 98   | 1052 |
| MES Total   |            | 954  | 98   | 1052 |
| MUHS        | WorkFlows  | 16   |      | 16   |
| MUHS Total  |            | 16   |      | 16   |
| MVES        | WorkFlows  | 1169 | 105  | 1274 |
| MVES Total  |            | 1169 | 105  | 1274 |
| PAUL        | WorkFlows  | 737  | 373  | 1110 |
| PAUL Total  |            | 737  | 373  | 1110 |

# STATISTICS: CIRCULATION

|                   |            |              |              |              |
|-------------------|------------|--------------|--------------|--------------|
| PCL               | Enterprise |              | 12           | 12           |
|                   | SIP        | 4            |              | 4            |
|                   | WorkFlows  | 111          | 59           | 170          |
|                   | Aspen      |              | 11           | 11           |
| <b>PCL Total</b>  |            | <b>115</b>   | <b>82</b>    | <b>197</b>   |
| PHS               | WorkFlows  | 127          | 11           | 138          |
| <b>PHS Total</b>  |            | <b>127</b>   | <b>11</b>    | <b>138</b>   |
| PMH               | WorkFlows  | 220          | 76           | 296          |
| <b>PMH Total</b>  |            | <b>220</b>   | <b>76</b>    | <b>296</b>   |
| PPL               | BC Mobile  |              | 705          | 705          |
|                   | Enterprise |              | 279          | 279          |
|                   | None       | 153          |              | 153          |
|                   | SIP        | 23562        | 906          | 24468        |
|                   | WorkFlows  | 10983        | 11413        | 22396        |
|                   | Aspen      |              | 1517         | 1517         |
| <b>PPL Total</b>  |            | <b>34698</b> | <b>14820</b> | <b>49518</b> |
| PVA2              | Enterprise |              | 5            | 5            |
|                   | WorkFlows  | 7            | 2            | 9            |
| <b>PVA2 Total</b> |            | <b>7</b>     | <b>7</b>     | <b>14</b>    |
| PVCV              | WorkFlows  | 1            |              | 1            |
| <b>PVCV Total</b> |            | <b>1</b>     |              | <b>1</b>     |
| PVPL              | BC Mobile  |              | 378          | 378          |
|                   | Enterprise |              | 751          | 751          |
|                   | None       | 1            |              | 1            |
|                   | SIP        | 18924        | 457          | 19381        |
|                   | WorkFlows  | 465          | 6751         | 7216         |
|                   | Aspen      |              | 434          | 434          |
| <b>PVPL Total</b> |            | <b>19390</b> | <b>8771</b>  | <b>28161</b> |
| SED               | BC Mobile  |              | 95           | 95           |
|                   | Enterprise |              | 84           | 84           |
|                   | None       | 7            |              | 7            |
|                   | SIP        | 8455         | 82           | 8537         |
|                   | WorkFlows  | 468          | 2893         | 3361         |
|                   | Aspen      |              | 585          | 585          |
| <b>SED Total</b>  |            | <b>8930</b>  | <b>3739</b>  | <b>12669</b> |
| SEL               | BC Mobile  |              | 1            | 1            |
|                   | Enterprise |              | 2            | 2            |
|                   | WorkFlows  | 1463         | 241          | 1704         |
| <b>SEL Total</b>  |            | <b>1463</b>  | <b>244</b>   | <b>1707</b>  |
| SPR               | BC Mobile  |              | 2            | 2            |
|                   | SIP        | 31           |              | 31           |
|                   | WorkFlows  | 216          | 39           | 255          |
| <b>SPR Total</b>  |            | <b>247</b>   | <b>41</b>    | <b>288</b>   |
| SVES              | WorkFlows  | 49           | 25           | 74           |
| <b>SVES Total</b> |            | <b>49</b>    | <b>25</b>    | <b>74</b>    |
| TCP               | Enterprise |              | 2            | 2            |
|                   | WorkFlows  | 8            | 1            | 9            |
| <b>TCP Total</b>  |            | <b>8</b>     | <b>3</b>     | <b>11</b>    |
| THS               | WorkFlows  | 1592         | 49           | 1641         |
| <b>THS Total</b>  |            | <b>1592</b>  | <b>49</b>    | <b>1641</b>  |
| VOC               | BC Mobile  |              | 28           | 28           |
|                   | Enterprise |              | 43           | 43           |
|                   | SIP        | 1882         | 7            | 1889         |
|                   | WorkFlows  | 279          | 526          | 805          |
| <b>VOC Total</b>  |            | <b>2161</b>  | <b>604</b>   | <b>2765</b>  |
| WIL               | BC Mobile  |              | 23           | 23           |
|                   | Enterprise |              | 4            | 4            |
|                   | SIP        | 522          | 21           | 543          |
|                   | WorkFlows  | 1            | 100          | 101          |
| <b>WIL Total</b>  |            | <b>523</b>   | <b>148</b>   | <b>671</b>   |
| YAR               | BC Mobile  |              | 10           | 10           |

|                    |            |               |              |               |
|--------------------|------------|---------------|--------------|---------------|
|                    | Enterprise |               | 7            | 7             |
|                    | None       | 1             |              | 1             |
|                    | SIP        | 428           | 7            | 435           |
|                    | WorkFlows  | 405           | 264          | 669           |
| <b>YAR Total</b>   |            | <b>834</b>    | <b>288</b>   | <b>1122</b>   |
| YCFLD              | WorkFlows  | 30            | 12           | 42            |
|                    | Aspen      |               | 61           | 61            |
| <b>YCFLD Total</b> |            | <b>30</b>     | <b>73</b>    | <b>103</b>    |
| YCP                | BC Mobile  |               | 27           | 27            |
|                    | Enterprise |               | 28           | 28            |
|                    | SIP        | 472           | 33           | 505           |
|                    | WorkFlows  | 247           | 385          | 632           |
|                    | Aspen      |               | 26           | 26            |
| <b>YCP Total</b>   |            | <b>719</b>    | <b>499</b>   | <b>1218</b>   |
| YCV                | BC Mobile  |               | 16           | 16            |
|                    | Enterprise |               | 29           | 29            |
|                    | SIP        | 206           | 5            | 211           |
|                    | WorkFlows  | 318           | 265          | 583           |
| <b>YCV Total</b>   |            | <b>524</b>    | <b>315</b>   | <b>839</b>    |
| YLN                | SIP        |               | 230          | 230           |
|                    | WorkFlows  | 31            | 8            | 39            |
|                    | Aspen      |               | 157          | 157           |
| <b>YLN Total</b>   |            | <b>31</b>     | <b>395</b>   | <b>426</b>    |
| <b>Grand Total</b> |            | <b>114128</b> | <b>44173</b> | <b>158301</b> |

| CIRCULATION USE ITEM - JANUARY 2022 |                       |
|-------------------------------------|-----------------------|
| Station Library                     | Use Item Transactions |
| CTW                                 | 318                   |
| CVHS                                | 1                     |
| CVUSD                               | 132                   |
| ERU                                 | 8                     |
| PCL                                 | 5                     |
| SED                                 | 5                     |
| SPR                                 | 31                    |
| YCP                                 | 101                   |
| YCV                                 | 13                    |

# STATISTICS: CHECKINS

| CHECKINS - JANUARY 2022 |                |
|-------------------------|----------------|
| Station Library         | Total Checkins |
| AJS                     | 1,515          |
| ASH                     | 983            |
| BAG                     | 683            |
| BCC                     | 1,066          |
| BEA                     | 1,434          |
| BMHS                    | 262            |
| BMMS                    | 377            |
| CJES                    | 999            |
| CLA                     | 213            |
| CON                     | 693            |
| COR                     | 822            |
| CRK                     | 201            |
| CSES                    | 230            |
| CTW                     | 10,870         |
| CVCL                    | 4,189          |
| CVHS                    | 212            |
| CVLAB                   | 803            |
| CVPL                    | 4,723          |
| CVUSD                   | 549            |
| DHL                     | 495            |
| ERU                     | 1,082          |
| GES                     | 1,050          |
| GHMS                    | 1,019          |
| GMMS                    | 100            |
| HES                     | 869            |
| JER                     | 167            |
| LES                     | 1,210          |
| LTS                     | 906            |
| LVES                    | 464            |
| MAY                     | 730            |
| MES                     | 971            |
| MUHS                    | 17             |
| MVES                    | 878            |
| PAUL                    | 685            |
| PCL                     | 187            |
| PHS                     | 99             |
| PMH                     | 178            |
| PPL                     | 35,832         |
| PVA2                    | 1              |
| PVCV                    | 1              |
| PVPL                    | 19,077         |
| SED                     | 8,913          |
| SEL                     | 1,484          |
| SPR                     | 309            |
| SVES                    | 42             |
| TCP                     | 18             |
| THS                     | 1,244          |
| VOC                     | 2,231          |
| WIL                     | 499            |
| YAR                     | 879            |
| YCFLD                   | 65             |
| YCP                     | 1,058          |
| YCV                     | 1,198          |
| YLN                     | 3,755          |
| <b>Total</b>            | <b>118,537</b> |

# STATISTICS: OPAC

## Enterprise

through 1/25

| Library      | Total         |
|--------------|---------------|
| ASH          | 655           |
| BAG          | 2307          |
| BCC          | 1625          |
| BEA          | 92            |
| BMHS         | 561           |
| CJES         | 0             |
| CLA          | 761           |
| CON          | 555           |
| COR          | 1917          |
| CRK          | 338           |
| CTW          | 27128         |
| CVHS         | 456           |
| CVCL         | 3295          |
| CVPL         | 54079         |
| CVUSD        | 18400         |
| DHL          | 867           |
| ERU          | 3442          |
| HUSD         | 81            |
| JER          | 1312          |
| LAW          | 2             |
| MAY          | 800           |
| MES          | 341           |
| MUHS         | 556           |
| ORME         | 1252          |
| PAUL         | 117           |
| PCL          | 4593          |
| PPL          | 38340         |
| PUSD         | 3371          |
| PVCV         | 0             |
| PVPL         | 28667         |
| SED          | 70829         |
| SEL          | 1032          |
| SPR          | 150           |
| SUSD         | 0             |
| SVES         | 0             |
| VVAC         | 0             |
| WIL          | 681           |
| YAR          | 2405          |
| YCFLD        | 10955         |
| YCP          | 22343         |
| NOTICE       | 18            |
| DEFAULT      | 16877         |
| <b>Total</b> | <b>321200</b> |

## Aspen Discovery

| Library    | Total |
|------------|-------|
| Default    | 13237 |
| CTW        | 35840 |
| CVCL       | 2543  |
| CVPL       | 1423  |
| Elementary | 1683  |
| ERU        | 1095  |
| High       | 307   |
| JER        | 100   |
| Middle     | 125   |
| PCL        | 793   |
| PPL        | 40944 |
| PVPL       | 14817 |
| SED        | 44691 |
| YCFLD      | 3574  |
| YCP        | 2931  |



# STATISTICS: OVERDRIVE

|                                  |       |              |      |
|----------------------------------|-------|--------------|------|
| <b>USAGE TYPE: ALL DOCUMENTS</b> |       |              |      |
| <b>USER ACTIVITY</b>             |       |              |      |
| <b>UNIQUE USERS: 5005</b>        |       |              |      |
| <b>CHECKOUTS</b>                 |       | <b>HOLDS</b> |      |
| Audiobook                        | 10285 | Audiobook    | 3838 |
| eBook                            | 12952 | eBook        | 4741 |
| Magazine                         | 1863  |              |      |

| <b>BRANCH</b>                                 | <b>CHECKOUTS</b> |
|---|------------------|
| YLN-Prescott                                  | 10677            |
| YLN-Prescott Valley                           | 4751             |
| YLN-Cottonwood                                | 2427             |
| YLN-Sedona                                    | 2360             |
| YLN-Chino Valley                              | 840              |
| YLN-Camp Verde                                | 773              |
| YLN-Sedona - Village of Oak Creek             | 725              |
| Yavapai College                               | 273              |
| YLN-Black Canyon City                         | 185              |
| YLN-Clark Memorial                            | 181              |
| YLN-Congress                                  | 176              |
| YLN-Yarnell                                   | 167              |
| YLN-Mayer                                     | 161              |
| YLN-Dewey-Humboldt Town                       | 140              |
| YLN-Paulden                                   | 127              |
| YLN-Seligman                                  | 103              |
| YLN-Bagdad                                    | 88               |
| YLN-Ash Fork                                  | 57               |
| Embry-Riddle Aeronautical University-Prescott | 54               |
| YLN-Cordes Lakes                              | 44               |
| YLN-Wilhoit                                   | 32               |
| YLN-Beaver Creek                              | 32               |
| Prescott College                              | 14               |
| YLN-Spring Valley                             | 13               |
| YLN-Jerome                                    | 8                |
| YLN-Yavapai Schools                           | 5                |
| YLN-Crown King                                | 4                |

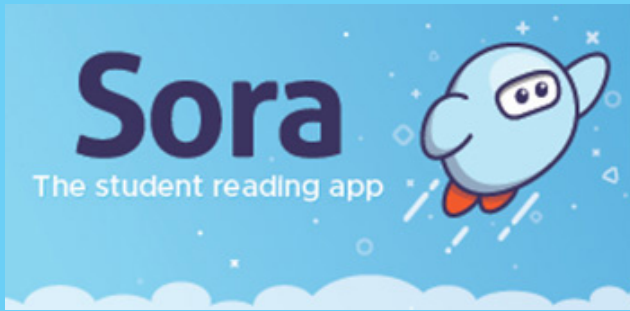
# STATISTICS: OVERDRIVE RLA

| CONSORTIUM                                    | Total       | audiobook   | ebook       |
|---|-------------|-------------|-------------|
| Apache County Library District                | 109         | 49          | 60          |
| Cochise County Library District               | 102         | 50          | 52          |
| Flagstaff City-Coconino County Public Library | 117         | 31          | 86          |
| Gila County Library District                  | 16          | 8           | 8           |
| Little Libraries That Could                   | 19          | 6           | 13          |
| Navajo County Library District                | 14          | 10          | 4           |
| Pima County Public Library                    | 375         | 138         | 237         |
| Southwest Valley Library Consortium           | 106         | 34          | 72          |
| Tempe Public Library                          | 869         | 418         | 451         |
| Yavapai Library Network                       | 5           | 1           | 4           |
| Yuma County Library District                  | 1073        | 619         | 454         |
| <b>Grand Total</b>                            | <b>2805</b> | <b>1364</b> | <b>1441</b> |

Yavapai Patron Checkouts from other RLA Systems: 688



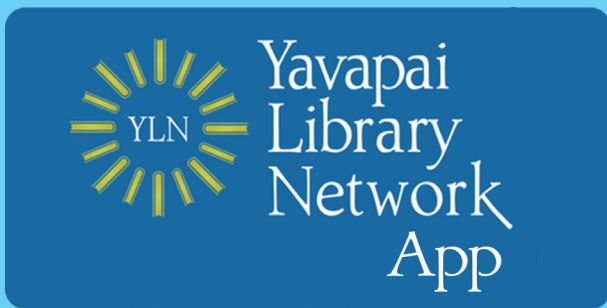
# STATISTICS: ONLINE USAGE



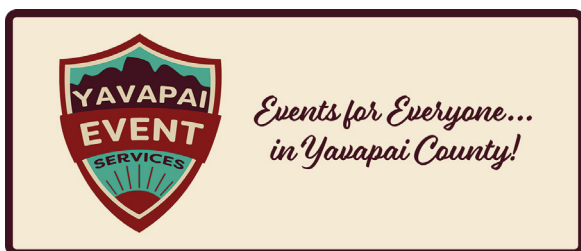
|                            |        |
|----------------------------|--------|
| Books Opened               | 1337   |
| Time Read (hours)          | 244.07 |
| Avg Time per Book (min)    | 14.86  |
| Avg Time per Session (min) | 12.57  |
| Avg Time per User (min)    | 16.11  |
| Unique Users               | 228    |



| Library | Total Titles Used | Total Unique Users | Total Book Downloads | Total Chapter Downloads | Top 5 Most Used Subjects   |
|---------|-------------------|--------------------|----------------------|-------------------------|--|
| TOTAL   | 431               | 312                | 128                  | 138                     | Literature,<br>Social Science,<br>Education,<br>Psychology,<br>History |



| Usage by Platform |         |          |
|-------------------|---------|----------|
| Platform Type     | Devices | Launches |
| Amazon-FireOS     | 4       | 31       |
| Android           | 590     | 3876     |
| iPad              | 258     | 1506     |
| iPhone            | 1071    | 7493     |
| iPod Touch        | 2       | 11       |
| TOTAL             | 1925    | 12917    |



| Month   | # of Programs | # of Users Visiting |
|---------|---------------|---------------------|
| January | 8,932         | 1407                |

# STATISTICS: ONLINE USAGE



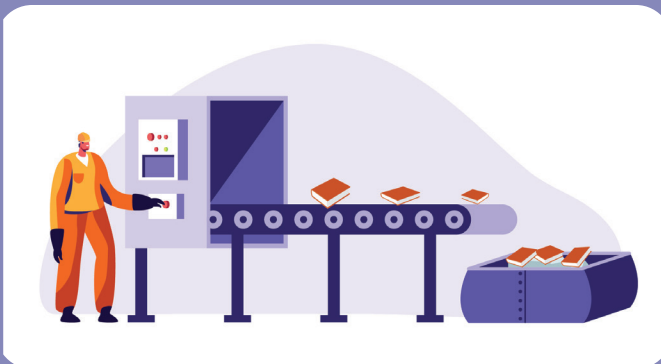
| Month   | New Registered Users | Login Sessions | New Courses Enrolled | Student Submissions |
|---------|----------------------|----------------|----------------------|---------------------|
| January | 14                   | 66             | 21                   | 113                 |



|                         |       |
|-------------------------|-------|
| TOTAL SESSIONS          | 343   |
| Mobile Sessions         | 155   |
| Avg Learning Time (min) | 15.22 |



|                |      |
|----------------|------|
| SMS Notices    |      |
| Hold Notice    | 5501 |
| Manual Text    | 30   |
| Overdue Notice | 560  |



|                    |       |
|--------------------|-------|
| AMH Sorter [Ethel] |       |
| Items/Month        | 63562 |

# STATISTICS - I-TIVA (TM3)

| Date                | Patrons     | Rejected Records | Total Attempts | Total Deliveries | Patron Logins on MESSAGE call |
|---------------------|-------------|------------------|----------------|------------------|-------------------------------|
| 1/1/2022            |             |                  |                |                  |                               |
| 1/2/2022            |             |                  |                |                  |                               |
| 1/3/2022            | 27          | 2                | 62             | 16               |                               |
| 1/4/2022            | 73          | 3                | 166            | 46               |                               |
| 1/5/2022            | 89          | 6                | 181            | 64               |                               |
| 1/6/2022            | 93          | 2                | 198            | 64               |                               |
| 1/7/2022            | 94          | 2                | 189            | 66               |                               |
| 1/8/2022            | 62          | 1                | 134            | 39               |                               |
| 1/9/2022            | 39          | 3                | 39             | 15               |                               |
| 1/10/2022           | 16          |                  | 34             | 10               |                               |
| 1/11/2022           | 63          | 2                | 139            | 40               |                               |
| 1/12/2022           | 87          | 3                | 193            | 55               |                               |
| 1/13/2022           | 87          | 8                | 184            | 58               |                               |
| 1/14/2022           | 80          |                  | 170            | 52               |                               |
| 1/15/2022           | 51          |                  | 111            | 33               |                               |
| 1/16/2022           | 21          | 1                | 21             | 6                |                               |
| 1/17/2022           | 23          |                  | 51             | 14               |                               |
| 1/18/2022           | 5           |                  | 10             | 4                |                               |
| 1/19/2022           | 67          | 6                | 146            | 41               |                               |
| 1/20/2022           | 96          | 6                | 186            | 71               |                               |
| 1/21/2022           | 76          | 10               | 161            | 53               |                               |
| 1/22/2022           | 69          | 2                | 146            | 49               |                               |
| 1/23/2022           | 14          | 2                | 14             | 5                |                               |
| 1/24/2022           | 18          |                  | 42             | 10               |                               |
| 1/25/2022           | 70          | 3                | 149            | 44               |                               |
| 1/26/2022           | 93          | 3                | 187            | 65               |                               |
| 1/27/2022           | 71          | 6                | 153            | 44               |                               |
| 1/28/2022           | 66          | 5                | 139            | 41               |                               |
| 1/29/2022           | 60          | 1                | 133            | 41               |                               |
| 1/30/2022           | 33          |                  | 33             | 8                |                               |
| 1/31/2022           | 26          |                  | 60             | 16               |                               |
| <b>Grand Total:</b> | <b>1669</b> | <b>77</b>        | <b>3431</b>    | <b>1070</b>      |                               |

I-Tiva Month To Date MESSAGE Report used

