

Yavapai
Library
Network
Monthly Report



September
2022

MANAGER'S LOWDOWN

Hi All –

Where did September go? One day last week, a big storm came through and the season changed from summer to fall. Now we have the cooler temperatures and perfect weather for hiking!

Here is what we've been working on this month:

- SirsiDynix Symphony (Workflows) moved into the cloud, as scheduled, on Monday, September 26th. There were a few bumps, but to our knowledge everyone is up and running. Phase II will be to secure all our connections by encrypting them with a product called stunnel (pronounced "s" tunnel). Your IT department should be visiting you and installing this software on your workstation. A big thanks to Chanel Wheeler and Sherry! Masterman for all of the preparation involved in making this a smooth transition!

- Almost all libraries are now migrated to Tech Logic's new baseCAMP product for their gates, wands and CirclT stations. The next step will be to encrypt the connections, followed by a re-design of the self-checkout template. We plan on incorporating e-receipts into the next template. Stay tuned. We will communicate with you as this process proceeds.

- The YLN Catalog app is officially our only mobile app now. It seems the old one is still working, as I type this, but expect it to disappear at any time.

- The ILS Committee is continuing to meet weekly and write the requirements desired/needed for the upcoming Request for Proposal (RFP). We have broken down into sub-groups with expertise. (For example, catalogers are creating the cataloging requirements.)

- Since some of our larger projects are complete, we have been able to devote more time getting the new intranet (portal) ready for release. We are now on schedule to release it to you on Wednesday, October 19.

- We are beginning the process of re-designing our help-desk interface. If you have any comments or suggestions, please add them to the "request tracker features" wiki at wiki.yln.info. You will need to log in with your portal credentials.

- Ash Fork Unified School District and Seligman Unified School District have been our two newest members that are now circulating materials. Next, we will be adding 2 schools from the Chino Valley School District: Heritage Middle School (HMS), and Del Rio Elementary School (DEL). These are the first members to re-join the consortium after leaving.

Until next month,

Valerie Burns



No member news this month.



PRIORITIES

Help Desk

A help desk request, or work order, is the submission of a problem that one encounters during the normal operation of a YLN service. Requests are generally submitted via e-mail to help@yln.info. If a request is submitted via telephone, then a YLN staff person will create the request for the submitter. Help desk requests will always be our highest priority because in some cases a member library employee cannot complete a work function until the issue is resolved.

Total requests submitted: 118

Total requests resolved: 106

Total unresolved requests opened this month: 12

Total requests still open: 23



STATISTICS: HOLDS

| HOLDS - September 2022 | | | | | |
|------------------------|-----------------|-----------------|-----------------|-----------------|-----------------|
| Hold Inactive Reason | CANCELLED | EXP_ONSHLF | EXPIRED | FILLED | Total |
| Pickup Library | Number of Holds | Number of Holds | Number of Holds | Number of Holds | Number of Holds |
| AJS | 2 | 5 | 1 | 7 | 15 |
| ASH | 11 | 9 | | 227 | 247 |
| BAG | 9 | 34 | | 218 | 261 |
| BCC | 23 | 4 | 2 | 392 | 421 |
| BEA | 74 | 73 | 1 | 287 | 435 |
| BMHS | 3 | 1 | | 4 | 8 |
| BMMS | 1 | | | | 1 |
| CJES | | 5 | | 1 | 6 |
| CLA | 12 | 15 | | 114 | 141 |
| CON | 27 | 11 | | 217 | 255 |
| COR | 25 | 19 | | 278 | 322 |
| CRK | 1 | | | 64 | 65 |
| CSES | 2 | 1 | | 10 | 13 |
| CTW | 270 | 242 | 8 | 2,656 | 3,176 |
| CVCL | 73 | 67 | 3 | 911 | 1,054 |
| CVHS | | 1 | | | 1 |
| CVLAB | 7 | 2 | | | 9 |
| CVPL | 94 | 125 | 2 | 1,275 | 1,496 |
| CVUSD | 13 | 7 | | 20 | 40 |
| DHL | 12 | 4 | | 221 | 237 |
| ERU | 17 | 9 | 1 | 82 | 109 |
| GES | 10 | | | 3 | 13 |
| GMMS | | 2 | 1 | 8 | 11 |
| HES | 36 | 11 | | 21 | 68 |
| JER | 4 | 3 | | 66 | 73 |
| LES | 2 | | | 13 | 15 |
| MAY | 27 | 15 | | 170 | 212 |
| PAUL | 46 | 22 | | 350 | 418 |
| PCL | | 2 | | 22 | 24 |
| PCM | | | | 1 | 1 |
| PHS | | | | 14 | 14 |
| PPL | 1,398 | 806 | 20 | 9,380 | 11,604 |
| PVA2 | 277 | 88 | 10 | 1,829 | 2,204 |
| PVPL | 537 | 447 | 9 | 5,392 | 6,385 |
| SED | 240 | 181 | 10 | 2,595 | 3,026 |
| SEL | 40 | 42 | 1 | 485 | 568 |
| SPR | 7 | 21 | | 139 | 167 |
| SVES | 3 | | | 3 | 6 |
| TCP | | 1 | | 7 | 8 |
| THS | 18 | | | 11 | 29 |
| VOC | 148 | 85 | 8 | 1,521 | 1,762 |

STATISTICS: HOLDS

| Hold Inactive Reason | CANCELLED | EXP_ONSHLF | EXPIRED | FILLED | Total |
|----------------------|-----------------|-----------------|-----------------|-----------------|-----------------|
| Pickup Library | Number of Holds | Number of Holds | Number of Holds | Number of Holds | Number of Holds |
| WIL | 17 | 6 | 1 | 206 | 230 |
| YAR | 27 | 7 | | 269 | 303 |
| YCFLD | 10 | 1 | | 33 | 44 |
| YCP | 24 | 16 | | 170 | 210 |
| YCP2 | | | | 11 | 11 |
| YCV | 6 | 8 | 2 | 75 | 91 |
| YCV2 | 1 | | | 7 | 8 |
| YLN | 2 | | | 15 | 17 |
| Total | 3,556 | 2,398 | 80 | 29,800 | 35,834 |

STATISTICS: TRANSITS

| ITEMS TRANSITED - SEPTEMBER 2022 | | | | | | | | | | | | | | | | |
|----------------------------------|--------|-----|-----|-----|-----|-----|------|------|------|-----|-----|-----|-----|------|-------|------|
| Station Library | | | | | | | | | | | | | | | | |
| Item Library | Total | AJS | ASH | BAG | BCC | BEA | BMHS | BMMS | CJES | CLA | CON | COR | CRK | CSES | CTW | CVCL |
| Total | 23,404 | 13 | 209 | 211 | 334 | 343 | 8 | 6 | 6 | 126 | 192 | 268 | 51 | 16 | 2,180 | 865 |
| AFSD | 10 | | | | | | | | | | | | | | | |
| AJS | 52 | | | | 1 | 2 | | | | | | | | | 3 | |
| ASH | 185 | | | 3 | 2 | 3 | | | | 1 | 3 | 1 | 1 | | 11 | 10 |
| BAG | 380 | | 8 | | 5 | 9 | | | 1 | 3 | 4 | 8 | | 1 | 57 | 2 |
| BCC | 377 | | 5 | 2 | | 10 | | | | 1 | 4 | 9 | 1 | | 38 | 6 |
| BEA | 205 | | | 2 | | | | | | 1 | 1 | 2 | | | 21 | 6 |
| BMHS | 65 | | 1 | 1 | | | | 1 | | | | | 1 | | 3 | 2 |
| BMMS | 33 | | 1 | | | | 1 | | 1 | | | | 1 | | 3 | 4 |
| CJES | 46 | | 1 | 3 | 1 | | | | | | | 3 | | 2 | 3 | 1 |
| CLA | 163 | | 1 | 1 | 1 | 4 | | | | | 2 | 2 | | | 9 | 3 |
| CON | 129 | | 3 | 1 | 3 | 1 | | | | | | | 1 | | 8 | 4 |
| COR | 261 | | 6 | 1 | 2 | 7 | | | | 1 | 1 | | | | 21 | 9 |
| CRK | 82 | | | | 1 | 2 | | | | | | | | | 9 | 4 |
| CSES | 21 | | | | | | | | | | | | | | 2 | 1 |
| CTW | 2,644 | | 23 | 17 | 52 | 44 | 1 | | 1 | 15 | 22 | 19 | 3 | 1 | | 107 |
| CVCL | 630 | | 1 | 8 | 4 | 5 | | | | 1 | 3 | 3 | 1 | 1 | 61 | |
| CVHS | 52 | 1 | | | | | | | | | | 1 | | | 1 | 2 |
| CVLAB | 33 | | | 1 | 1 | | | | | | | | | 1 | 1 | |
| CVPL | 1,139 | 1 | 3 | 7 | 13 | 13 | | | 1 | 6 | 7 | 15 | 1 | 2 | 113 | 43 |
| CVUSD | 223 | | 4 | 2 | | 2 | | | | | | | 1 | | 24 | 11 |
| DHL | 155 | | | | 1 | 4 | | | | | 3 | 5 | | | 13 | 4 |
| ERU | 144 | | | 1 | 3 | 1 | | | | 2 | 1 | | | | 12 | 4 |
| GES | 101 | | | 5 | | | | | | | 2 | | | | 12 | 2 |
| GHMS | 42 | | | 1 | | 1 | | 5 | | | | | | | 4 | 2 |
| GMMS | 45 | | | 1 | | | | | | | | | | | 3 | 1 |
| HES | 29 | | 1 | 2 | | | | | | | | | | | | |
| JER | 210 | | 5 | | 3 | 2 | | | | | | 1 | | | 30 | 12 |
| LES | 72 | | | 3 | | | | | | | 1 | | 1 | | 5 | 2 |
| LTS | 90 | | | 3 | | | | | | 1 | | | | | 7 | 5 |
| LVES | 59 | | | 1 | | | | | | 1 | | | | 3 | 7 | 2 |
| MAY | 283 | | 3 | 5 | 4 | 3 | | | | 1 | 3 | 6 | | | 13 | 7 |
| MES | 34 | | 1 | 1 | | | | | | 1 | | 1 | | | 3 | 1 |
| MVES | 98 | | 2 | 4 | | | | | | 1 | 1 | | | | 19 | 7 |
| ORME | 31 | | | | | | | | | | | | | | 2 | 3 |
| PAUL | 150 | | 3 | 2 | 2 | 5 | | | | | 2 | 2 | | | 7 | 5 |
| PCL | 241 | | | 2 | 1 | | | | | | | 3 | | | 38 | 6 |
| PHS | 85 | | | | 3 | 1 | | | | 1 | | 1 | | | 4 | 1 |
| PMH | 17 | | | | | | | | | | | | | | | |
| PPL | 5,049 | 4 | 55 | 71 | 82 | 106 | 1 | | | 28 | 54 | 79 | 22 | | 688 | 223 |
| PVCV | 1 | | | | | | | | | | | | | | | |
| PVPL | 2,549 | 1 | 18 | 17 | 42 | 29 | 3 | | 1 | 8 | 29 | 27 | | 4 | 265 | 111 |
| SED | 2,541 | 3 | 14 | 16 | 17 | 20 | | | 1 | 19 | 15 | 20 | 7 | | 244 | 76 |
| SEL | 226 | | 7 | 1 | 4 | 2 | | | | 4 | 2 | 3 | 2 | | 21 | 7 |
| SPR | 204 | | 2 | 2 | 24 | | | | | | 1 | 3 | | | 10 | 5 |
| STX | 76 | | | 1 | 1 | | | | | | | 2 | | | 1 | 1 |
| SUSD | 23 | | | 2 | | | | | | | | | | | 4 | 3 |
| SVES | 7 | | | | | | | | | | | | | | | |
| TCP | 4 | | | | | | | | | | | | | | 1 | |
| THS | 55 | 1 | | 2 | | | | | | | | | | | | 2 |
| VOC | 384 | | 3 | 1 | 2 | 6 | | | | 1 | 4 | 8 | 1 | | 33 | 7 |
| WIL | 160 | | 4 | | 2 | 6 | | | | 1 | 1 | | 2 | | 6 | 6 |
| YAR | 344 | | 7 | 3 | 8 | 13 | | | | | 1 | 10 | | | 24 | 9 |
| YCFLD | 10 | | | | 2 | | | | | | 4 | | 2 | | | |
| YCP | 956 | 1 | 7 | 3 | 7 | 9 | 1 | | | 6 | 2 | 15 | | | 101 | 43 |
| YCV | 2,198 | 1 | 20 | 11 | 40 | 33 | 1 | | | 22 | 19 | 19 | 4 | | 215 | 93 |
| YLN | 1 | | | 1 | | | | | | | | | | | | |

STATISTICS: TRANSITS

ITEMS TRANSITED - September 2022

| Station Library | | | | | | | | | | | | | | | | | |
|-----------------|------|-------|-------|-------|-----|-----|-----|------|-----|-----|-----|------|-----|-----|------|-----|-----|
| Item Library | CVHS | CVLAB | CVPL | CVUSD | DHL | ERU | GES | GMMS | HES | JER | LES | LVES | MAY | MES | PAUL | PCL | PHS |
| Total | 1 | 5 | 1,217 | 32 | 222 | 82 | 9 | 12 | 31 | 76 | 10 | 12 | 180 | 2 | 340 | 20 | 14 |
| AFSD | | | | | | | | | | | | | | | | | |
| AJS | | | 5 | | | | | | | | | | 1 | | | | |
| ASH | | | 4 | | | 2 | | | | | | | 1 | | 10 | | |
| BAG | | | 13 | | 2 | | 2 | | 1 | 1 | | | 2 | | 14 | | |
| BCC | | | 14 | | 7 | 1 | | | 1 | | | | 3 | | 17 | | |
| BEA | | | 14 | | 1 | 1 | | 1 | 1 | 1 | | | 1 | | 9 | | |
| BMHS | | | | 1 | | | | | | | | | | | 2 | | |
| BMMS | | | 2 | | | | | | | | | | | | | | |
| CJES | | | 2 | | | | | | | | | | | | | | |
| CLA | | | 6 | | | | | | | | | | 4 | | 11 | | |
| CON | | | 6 | | 4 | | | | | | | | | | 4 | | |
| COR | | | 7 | | 2 | 1 | | | 3 | | | | 5 | 1 | 11 | | 1 |
| CRK | | | 6 | 1 | 1 | | | | | | | | | | 2 | | |
| CSES | | | | | | | | | | | | | 1 | | | | |
| CTW | | | 129 | 1 | 22 | 3 | | 1 | 1 | 7 | 1 | | 25 | | 44 | 1 | |
| CVCL | | | 42 | 1 | 8 | 1 | | | 1 | | | | 3 | | 9 | | 1 |
| CVHS | | | 4 | 1 | | | | | 1 | | | | 1 | | | | |
| CVLAB | | | 2 | 6 | | | | | | | | | 1 | | | | |
| CVPL | | | | | 12 | | | | 3 | 4 | | | 8 | | 15 | 2 | |
| CVUSD | | 4 | 11 | | 1 | | | | 2 | 1 | | | 6 | | | | |
| DHL | | | 6 | | | | 1 | | | | | | | | 6 | | |
| ERU | | | 9 | | 2 | | | | | | | | | | 2 | | |
| GES | | | 12 | | | | | | 1 | | | | | | 1 | | |
| GHMS | | | 4 | | 2 | | | | | | | | | | 1 | | |
| GMMS | | | 9 | 1 | | | | | | | | | | | 1 | | |
| HES | 1 | | 2 | | | | | | | | | | | | | | |
| JER | | | 3 | | | | | | | | | | | | 3 | | |
| LES | | | 8 | | | | | | | | | | | | | | |
| LTS | | | 6 | 1 | 2 | | | | | | | | | | 1 | | |
| LVES | | | 9 | | | | 2 | | | | | | | | | | |
| MAY | | | 10 | | 4 | | | | | 1 | | | | | 7 | | |
| MES | | | 4 | | | | | | | | | | | | | | |
| MVES | | | 10 | | 1 | | | | | | | | | | 1 | | |
| ORME | | | 1 | | | 1 | | | | | | | | | 1 | | |
| PAUL | | | 5 | 1 | 4 | | | | | | | | 2 | | | | |
| PCL | | | 12 | | 2 | 1 | | | | 1 | | | 1 | | | | |
| PHS | | | 3 | | | 1 | | | | | | | | | 2 | | |
| PMH | | | | | | | 1 | | 4 | | | 12 | | | | | |
| PPL | | | 382 | 10 | 69 | 28 | | 4 | 3 | 34 | 5 | | 53 | | 67 | 8 | 6 |
| PVCV | | | | | | | | | | | | | | 1 | | | |
| PVPL | | 1 | 172 | 4 | 26 | 5 | 1 | 3 | 3 | 6 | 1 | | 26 | | 26 | 7 | 1 |
| SED | | | 90 | 1 | 18 | 16 | | | 2 | 3 | | | 12 | | 11 | | 4 |
| SEL | | | 11 | | 1 | | | | 1 | | | | 1 | | 13 | | |
| SPR | | | 3 | | | 1 | | | | 1 | | | 1 | | 8 | | |
| STX | | | 5 | | | 1 | | | 3 | | | | 1 | | | | |
| SUSD | | | 1 | | | | | | | | | | | | | | |
| SVES | | | 1 | | | | | | | | | | | | | | |
| TCP | | | | | | | | | | | | | | | 1 | | |
| THS | | | 1 | 1 | | | | | | | 2 | | | | | | |
| VOC | | | 10 | 1 | 2 | | | | | 1 | | | 5 | | 1 | | |
| WIL | | | 4 | | | 1 | 1 | | | | 1 | | 1 | | 7 | | |
| YAR | | | 11 | 1 | 2 | | 1 | | | 4 | | | 2 | | 13 | | |
| YCFLD | | | | | | | | | | | | | | | | | |
| YCP | | | 48 | | 7 | 5 | | | | 2 | | | 5 | | 9 | | 1 |
| YCV | | | 98 | | 20 | 13 | | 3 | | 9 | | | 8 | | 10 | 2 | |
| YLN | | | | | | | | | | | | | | | | | |

STATISTICS: TRANSITS

| ITEMS TRANSITED - SEPTEMBER 2022 | | | | | | | | | | | | | | | | | | |
|----------------------------------|-----|-------|------|-------|-------|-----|-----|------|------|-----|-----|-------|-----|-----|-------|-----|-----|-----|
| Station Library | | | | | | | | | | | | | | | | | | |
| Item Library | PMH | PPL | PVA2 | PVPL | SED | SEL | SPR | SUSD | SVES | TCP | THS | VOC | WIL | YAR | YCFLD | YCP | YCV | YLN |
| Total | 1 | 5,681 | 122 | 5,481 | 1,954 | 484 | 182 | 12 | 4 | 8 | 24 | 1,512 | 277 | 254 | 31 | 160 | 93 | 31 |
| AFSD | | | | | | | | 10 | | | | | | | | | | |
| AJS | | 12 | | 21 | 2 | 2 | | | | | | 2 | 1 | | | | | |
| ASH | | 44 | 1 | 45 | 18 | 4 | 4 | | | | | 13 | | 1 | 1 | | 1 | 1 |
| BAG | | 76 | | 98 | 18 | 18 | 5 | | | | | 11 | 6 | 3 | 9 | | 3 | |
| BCC | | 85 | | 94 | 30 | 13 | 10 | | | | | 14 | 3 | 3 | 1 | 3 | 1 | 1 |
| BEA | | 54 | 1 | 58 | 10 | 7 | 4 | | | | | 4 | | | 4 | | 1 | |
| BMHS | | 23 | 1 | 17 | 5 | | | | | | | 6 | | | | 1 | | |
| BMMS | | 8 | 2 | 6 | 1 | | | | | | | 2 | | | | 1 | | |
| CJES | | 6 | 1 | 10 | 6 | | | 2 | | | 1 | 1 | | 1 | 1 | | | 1 |
| CLA | | 37 | | 40 | 21 | 1 | 4 | | | | | 5 | 5 | 2 | 2 | | 1 | 1 |
| CON | | 32 | 2 | 36 | 9 | 5 | 2 | | | | | 2 | 5 | 1 | | | | |
| COR | | 59 | | 63 | 18 | 10 | 12 | | | | | 7 | 8 | 2 | 1 | 1 | 1 | |
| CRK | | 18 | 1 | 17 | 11 | 1 | 2 | | | | | 5 | | 1 | | | | |
| CSES | | 6 | 1 | 9 | | | | | | | | | | | | 1 | | |
| CTW | | 878 | 11 | 740 | 211 | 42 | 11 | | 1 | | 2 | 126 | 19 | 42 | | 11 | 7 | 3 |
| CVCL | | 188 | 1 | 179 | 45 | 6 | 4 | | | | | 36 | 4 | 5 | | 6 | 2 | |
| CVHS | | 19 | | 13 | 4 | | 1 | | | | | 3 | | | | | | |
| CVLAB | | 6 | 2 | 7 | 1 | 3 | | | | | | | | 1 | | | | |
| CVPL | | 343 | 3 | 325 | 76 | 17 | 5 | | | 1 | 3 | 65 | 11 | 12 | 1 | 7 | 1 | |
| CVUSD | | 68 | 3 | 55 | 10 | 1 | 2 | | | | | 12 | | 2 | | | | 1 |
| DHL | | 35 | 2 | 48 | 14 | 2 | 1 | | | | | 7 | | 1 | | 1 | 1 | |
| ERU | | 43 | | 33 | 11 | 1 | | | | | | 13 | 1 | 1 | | 2 | 2 | |
| GES | | 20 | 1 | 41 | 2 | 1 | | | | | | 1 | | | | | | |
| GHMS | | 11 | | 8 | 1 | 1 | | | | | | | | | | 1 | | |
| GMMS | 1 | 10 | | 14 | 1 | | | | | | | 3 | | | | | | |
| HES | | 8 | 1 | 12 | | 1 | | | | | | | | 1 | | | | |
| JER | | 69 | | 49 | 18 | 4 | 3 | | | | | 5 | | | | 3 | | |
| LES | | 17 | | 29 | | | | | | | 1 | 4 | | | | 1 | | |
| LTS | | 21 | 1 | 33 | 6 | | 2 | | | | | | | 1 | | | | |
| LVES | | 16 | 1 | 12 | 3 | | | | | | | | 1 | | | | | 1 |
| MAY | | 79 | | 75 | 24 | 3 | 5 | | | | | 17 | 8 | 1 | 3 | 1 | | |
| MES | | 10 | | 5 | 2 | 1 | | | | | | 2 | | | | | | 2 |
| MVES | | 20 | 3 | 21 | 3 | 2 | | | | | | 3 | | | | | | |
| ORME | | 6 | | 5 | 8 | | | | | | | 4 | | | | | | |
| PAUL | | 38 | | 39 | 13 | 2 | 3 | | | | | 6 | 3 | 2 | 2 | 1 | | 1 |
| PCL | | 86 | | 33 | 42 | | | | | | | 9 | | 1 | | 2 | 1 | |
| PHS | | 33 | 1 | 18 | 6 | | 2 | | | | | 5 | | | | | 3 | |
| PMH | | | | | | | | | | | | | | | | | | |
| PPL | | | 25 | 1,590 | 576 | 128 | 26 | | | 2 | 4 | 353 | 80 | 95 | 1 | 53 | 26 | 8 |
| PVCV | | | | | | | | | | | | | | | | | | |
| PVPL | | 1,130 | 36 | | 231 | 74 | 16 | | 2 | | 6 | 121 | 32 | 28 | 1 | 19 | 11 | 5 |
| SED | | 775 | 6 | 557 | | 31 | 14 | | | 1 | 6 | 469 | 33 | 13 | | 13 | 13 | 1 |
| SEL | | 55 | 1 | 50 | 10 | | 6 | | | | | 7 | 9 | 1 | | 2 | 4 | 1 |
| SPR | | 52 | | 59 | 12 | 9 | | | | | | 3 | 1 | 3 | 1 | 2 | 1 | |
| STX | | 21 | 1 | 25 | 5 | 2 | 3 | | | | | 1 | | | | 1 | | 1 |
| SUSD | | 3 | | 5 | 2 | | | | | | | 1 | | | | 1 | 1 | |
| SVES | | 3 | | 3 | | | | | | | | | | | | | | |
| TCP | | | | | | | | | | | | 2 | | | | | | |
| THS | | 16 | 2 | 25 | | 2 | | | | | | 1 | | | | | | |
| VOC | | 77 | 3 | 68 | 130 | 8 | 3 | | | 2 | | | 4 | 2 | 1 | | | |
| WIL | | 38 | 1 | 49 | 14 | 2 | 3 | | | | | 4 | | 1 | 1 | | 3 | 1 |
| YAR | | 77 | 1 | 80 | 27 | 11 | 11 | | | | 1 | 19 | 3 | | 1 | 2 | 2 | |
| YCFLD | | | | | | | 1 | | | | | | | | | | | 1 |
| YCP | | 300 | 3 | 205 | 95 | 13 | 6 | | 1 | 1 | | 41 | 8 | 4 | | | 7 | |
| YCV | | 650 | 3 | 457 | 202 | 56 | 11 | | | 1 | | 97 | 32 | 23 | | 24 | | 1 |
| YLN | | | | | | | | | | | | | | | | | | |

STATISTICS: DISCARDED & ADDED

| DISCARDS - SEPTEMBER 2022 | |
|---------------------------|--------------------------|
| Station Library | Library Use Transactions |
| AJS | 40 |
| ASH | 8 |
| BAG | 8 |
| BCC | 44 |
| BEA | 84 |
| BMHS | 6 |
| CON | 26 |
| COR | 10 |
| CRK | 6 |
| CTW | 1,265 |
| CVCL | 313 |
| CVHS | 2 |
| CVPL | 22 |
| CVUSD | 410 |
| DHL | 1 |
| ERU | 144 |
| GHMS | 1 |
| GMMS | 3 |
| LES | 38 |
| MAY | 142 |
| MES | 1 |
| PCL | 3 |
| PPL | 1,469 |
| PVPL | 523 |
| SED | 402 |
| SUSD | 410 |
| THS | 112 |
| WIL | 74 |
| YAR | 4 |
| YCFLD | 1 |
| YCP | 69 |
| YCV | 764 |
| YLN | 52 |
| Total | 6,457 |

| ITEMS ADDED - SEPTEMBER 2022 | |
|------------------------------|--------------|
| Item Library | Total Copies |
| AFSD | 280 |
| AJS | 1 |
| ASH | 5 |
| BAG | 35 |
| BCC | 67 |
| BEA | 110 |
| BMHS | 59 |
| BMMS | 2 |
| CJES | 17 |
| CLA | 35 |
| CON | 55 |
| COR | 79 |
| CRK | 13 |
| CSES | 13 |
| CTW | 264 |
| CVCL | 171 |
| CVHS | 3 |
| CVLAB | 155 |
| CVPL | 124 |
| CVUSD | 290 |
| DHL | 49 |
| ERU | 78 |
| GES | 79 |
| GHMS | 23 |
| GMMS | 20 |
| HES | 10 |
| JER | 18 |
| LES | 90 |
| LTS | 2 |
| LVES | 111 |
| MAY | 38 |
| MES | 326 |
| MUHS | 8 |
| MVES | 26 |
| ORME | 20 |
| PAUL | 34 |
| PCL | 12 |
| PHS | 75 |
| PPL | 1000 |
| PVPL | 1000 |
| SED | 387 |
| SEL | 43 |
| SHM | 24 |
| SPR | 22 |
| SUSD | 475 |
| SVES | 34 |
| THS | 214 |
| VOC | 105 |
| VVAC | 336 |
| WIL | 17 |
| YAR | 35 |
| YCP | 82 |
| YCV | 206 |
| YLN | 1 |
| Grand Total | 6778 |

| TOTAL ITEMS - SEPTEMBER 2022 | |
|------------------------------|------------------|
| Item Library | Total Copies |
| AFSD | 2,936 |
| AJS | 13,866 |
| ASH | 5,274 |
| BAG | 15,346 |
| BCC | 11,683 |
| BEA | 12,223 |
| BMHS | 30,267 |
| BMMS | 7,871 |
| CJES | 11,246 |
| CLA | 9,098 |
| CON | 6,335 |
| COR | 6,606 |
| CRK | 3,560 |
| CSES | 4,043 |
| CTW | 90,056 |
| CVCL | 29,925 |
| CVHS | 16,425 |
| CVLAB | 4,592 |
| CVPL | 53,112 |
| CVUSD | 30,149 |
| DHL | 5,526 |
| ERU | 28,491 |
| GES | 12,451 |
| GHMS | 10,054 |
| GMMS | 9,683 |
| HES | 8,656 |
| JER | 14,304 |
| LAW | 1,784 |
| LES | 12,979 |
| LTS | 13,349 |
| LVES | 7,618 |
| MAY | 10,333 |
| MES | 5,884 |
| MUHS | 5,220 |
| MVES | 9,699 |
| ORME | 9,177 |
| PAUL | 7,070 |
| PCL | 35,072 |
| PHS | 11,535 |
| PMH | 9,287 |
| PPL | 132,341 |
| PVCV | 4,640 |
| PVPL | 88,043 |
| SED | 64,524 |
| SEL | 6,837 |
| SHM | 8,050 |
| SPR | 5,279 |
| STX | 831 |
| SUSD | 5,779 |
| SVES | 6,944 |
| TCP | 1,242 |
| THS | 11,903 |
| VOC | 4,749 |
| VVAC | 3,072 |
| WIL | 5,270 |
| YAR | 9,742 |
| YAV | 4,118 |
| YCC | 2,157 |
| YCFLD | 80 |
| YCP | 61,898 |
| YCV | 49,451 |
| YLN | 4,031 |
| Total | 1,073,766 |

STATISTICS: USERS

| NEW USERS - SEPTEMBER 2022 | |
|----------------------------|-----------------|
| User Library | Number of Users |
| AFSD | 23 |
| AJS | 14 |
| ASH | 20 |
| BAG | 17 |
| BCC | 11 |
| BEA | 37 |
| BMHS | 13 |
| BMMS | 3 |
| CJES | 5 |
| CLA | 7 |
| CON | 6 |
| COR | 14 |
| CRK | 3 |
| CSES | 8 |
| CTW | 167 |
| CVCL | 88 |
| CVHS | 19 |
| CVPL | 64 |
| CVUSD | 53 |
| DHL | 14 |
| ERU | 8 |
| GES | 8 |
| GHMS | 3 |
| GMMS | 4 |
| HES | 7 |
| JER | 1 |
| LES | 6 |
| LTS | 19 |
| LVES | 10 |
| MAY | 10 |
| MES | 32 |
| MUHS | 14 |
| MVES | 10 |
| ORME | 20 |
| PAUL | 15 |
| PCL | 8 |
| PHS | 15 |
| PMH | 11 |
| PPL | 393 |
| PVPL | 291 |
| SED | 112 |
| SEL | 11 |
| SPR | 12 |
| SUSD | 28 |
| SVES | 3 |
| TCP | 2 |
| THS | 12 |
| VOC | 29 |
| WIL | 1 |
| YAR | 7 |
| YCP | 30 |
| YCV | 25 |
| Grand Total | 1743 |

| TOTAL USERS - SEPTEMBER 2022 | |
|------------------------------|-----------------|
| User Library | Number of Users |
| AFSD | 342 |
| AJS | 968 |
| ASH | 726 |
| BAG | 567 |
| BCC | 935 |
| BEA | 1,103 |
| BMHS | 2,403 |
| BMMS | 484 |
| CJES | 634 |
| CLA | 521 |
| CON | 575 |
| COR | 841 |
| CRK | 148 |
| CSES | 911 |
| CTW | 10,844 |
| CVCL | 4,820 |
| CVHS | 1,486 |
| CVLAB | 24 |
| CVPL | 5,055 |
| CVUSD | 2,285 |
| DHL | 531 |
| ERU | 5,965 |
| GES | 780 |
| GHMS | 661 |
| GMMS | 601 |
| HES | 503 |
| JER | 202 |
| LES | 648 |
| LTS | 1,184 |
| LVES | 589 |
| MAY | 793 |
| MES | 1,592 |
| MUHS | 1,888 |
| MVES | 531 |
| ORME | 496 |
| PAUL | 672 |
| PCL | 3,899 |
| PHS | 1,862 |
| PMH | 964 |
| PPL | 23,917 |
| PVPL | 16,891 |
| SED | 8,072 |
| SEL | 597 |
| SHM | 1 |
| SPR | 475 |
| SUSD | 269 |
| SVES | 53 |
| TCP | 25 |
| THS | 943 |
| VOC | 1,376 |
| WIL | 194 |
| YAR | 487 |
| YCFLD | 13 |
| YCP | 1,253 |
| YCV | 705 |
| YLN | 9 |
| Total | 115,313 |

STATISTICS: BILLS

| PATRON BILLS - September 2022 | | | |
|-------------------------------|------------|-------------------|---------------------|
| Bill Library Code | # of Bills | Bill Amount | Bill Payment Amount |
| Total | 549 | \$2,712.72 | \$2,695.22 |
| BEA | 1 | \$5.00 | \$5.00 |
| COR | 1 | \$20.00 | \$20.00 |
| CTW | 26 | \$99.00 | \$99.00 |
| CVPL | 8 | \$17.70 | \$17.20 |
| ERU | 1 | \$2.00 | \$2.00 |
| LES | 2 | \$50.00 | \$50.00 |
| LTS | 2 | \$12.00 | \$12.00 |
| PAUL | 4 | \$13.50 | \$13.50 |
| PCL | 2 | \$9.00 | \$9.00 |
| PHS | 3 | \$3.00 | \$3.00 |
| PPL | 449 | \$1,953.04 | \$1,953.04 |
| PVPL | 20 | \$249.24 | \$249.24 |
| SED | 16 | \$114.20 | \$97.20 |
| SPR | 1 | \$6.00 | \$6.00 |
| TCP | 3 | \$28.50 | \$28.50 |
| VOC | 6 | \$69.60 | \$69.60 |
| YCP | 2 | \$30.94 | \$30.94 |
| YLN | 2 | \$30.00 | \$30.00 |



STATISTICS: CIRCULATION

CIRCULATION - SEPTEMBER 2022

| Station Library | Client Types | Charge Item Part B | Renew Item | Grand Total |
|-----------------|--------------|--------------------|------------|-------------|
| AFSD | WorkFlows | 182 | 3 | 185 |
| AFSD Total | | 182 | 3 | 185 |
| AJS | None | 6 | | 6 |
| | WorkFlows | 1068 | 65 | 1133 |
| AJS Total | | 1074 | 65 | 1139 |
| ASH | BC Mobile | | 3 | 3 |
| | None | 10 | | 10 |
| | SIP | 703 | 5 | 708 |
| | WorkFlows | 26 | 244 | 270 |
| | Aspen | | 2 | 2 |
| ASH Total | | 739 | 254 | 993 |
| BAG | BC Mobile | | 10 | 10 |
| | None | 34 | | 34 |
| | SIP | 539 | | 539 |
| | WorkFlows | 144 | 577 | 721 |
| BAG Total | | 717 | 587 | 1304 |
| BCC | None | 4 | | 4 |
| | SIP | 677 | 2 | 679 |
| | WorkFlows | 274 | 409 | 683 |
| | Aspen | | 1 | 1 |
| BCC Total | | 955 | 412 | 1367 |
| BEA | None | 97 | | 97 |
| | WorkFlows | 1744 | 495 | 2239 |
| | Aspen | | 9 | 9 |
| BEA Total | | 1841 | 504 | 2345 |
| BMHS | None | 1 | | 1 |
| | WorkFlows | 150 | 439 | 589 |
| BMHS Total | | 151 | 439 | 590 |
| BMMS | WorkFlows | 183 | 50 | 233 |
| BMMS Total | | 183 | 50 | 233 |
| CJES | None | 5 | | 5 |
| | WorkFlows | 1348 | 105 | 1453 |
| CJES Total | | 1353 | 105 | 1458 |
| CLA | BC Mobile | | 37 | 37 |
| | None | 17 | | 17 |
| | SIP | 158 | | 158 |
| | WorkFlows | 123 | 92 | 215 |
| CLA Total | | 298 | 129 | 427 |
| CON | BC Mobile | | 8 | 8 |
| | None | 43 | | 43 |
| | SIP | 362 | 1 | 363 |
| | WorkFlows | 156 | 192 | 348 |
| | Aspen | | 1 | 1 |
| CON Total | | 561 | 202 | 763 |
| COR | BC Mobile | | 14 | 14 |
| | None | 20 | | 20 |
| | SIP | 358 | 8 | 366 |
| | WorkFlows | 292 | 346 | 638 |
| | Aspen | | 8 | 8 |
| COR Total | | 670 | 376 | 1046 |
| CRK | None | 53 | | 53 |
| | WorkFlows | 129 | 61 | 190 |
| CRK Total | | 182 | 61 | 243 |
| CSES | None | 1 | | 1 |
| | WorkFlows | 318 | 1 | 319 |
| CSES Total | | 319 | 1 | 320 |

| | | | | |
|-------------|-----------|------|------|-------|
| CTW | BC Mobile | | 79 | 79 |
| | None | 268 | | 268 |
| | SIP | 9015 | 395 | 9410 |
| | WorkFlows | 321 | 4357 | 4678 |
| | Aspen | | 327 | 327 |
| CTW Total | | 9604 | 5158 | 14762 |
| CVCL | BC Mobile | | 19 | 19 |
| | None | 76 | | 76 |
| | SIP | 2271 | 7 | 2278 |
| | WorkFlows | 1374 | 1549 | 2923 |
| | Aspen | | 70 | 70 |
| CVCL Total | | 3721 | 1645 | 5366 |
| CVHS | None | 1 | | 1 |
| | WorkFlows | 121 | 29 | 150 |
| CVHS Total | | 122 | 29 | 151 |
| CVLAB | None | 2 | | 2 |
| | WorkFlows | 940 | 20 | 960 |
| CVLAB Total | | 942 | 20 | 962 |
| CVPL | BC Mobile | | 118 | 118 |
| | None | 136 | | 136 |
| | SIP | 1556 | 24 | 1580 |
| | WorkFlows | 3329 | 2369 | 5698 |
| | Aspen | | 47 | 47 |
| CVPL Total | | 5021 | 2558 | 7579 |
| CVUSD | None | 7 | | 7 |
| | SIP | 7 | 1 | 8 |
| | WorkFlows | 487 | 78 | 565 |
| CVUSD Total | | 501 | 79 | 580 |
| DHL | BC Mobile | | 6 | 6 |
| | None | 4 | | 4 |
| | SIP | 473 | 10 | 483 |
| | WorkFlows | 6 | 159 | 165 |
| | Aspen | | 7 | 7 |
| DHL Total | | 483 | 182 | 665 |
| ERU | BC Mobile | | 1 | 1 |
| | None | 11 | | 11 |
| | SIP | 99 | 3 | 102 |
| | WorkFlows | 1693 | 166 | 1859 |
| | Aspen | | 14 | 14 |
| ERU Total | | 1803 | 184 | 1987 |
| GES | WorkFlows | 1966 | 391 | 2357 |
| GES Total | | 1966 | 391 | 2357 |
| GHMS | WorkFlows | 216 | 5 | 221 |
| GHMS Total | | 216 | 5 | 221 |
| GMMS | None | 3 | | 3 |
| | WorkFlows | 260 | 93 | 353 |
| GMMS Total | | 263 | 93 | 356 |
| HES | None | 13 | | 13 |
| | WorkFlows | 1315 | 157 | 1472 |
| HES Total | | 1328 | 157 | 1485 |
| JER | None | 3 | | 3 |
| | WorkFlows | 138 | 94 | 232 |
| JER Total | | 141 | 94 | 235 |
| LES | WorkFlows | 2336 | 257 | 2593 |
| LES Total | | 2336 | 257 | 2593 |
| LTS | WorkFlows | 1510 | 82 | 1592 |
| LTS Total | | 1510 | 82 | 1592 |
| LVES | WorkFlows | 914 | 97 | 1011 |
| LVES Total | | 914 | 97 | 1011 |
| MAY | BC Mobile | | 2 | 2 |
| | None | 15 | | 15 |

STATISTICS: CIRCULATION

| | | | | |
|------------|-----------|-------|-------|-------|
| | SIP | 501 | 2 | 503 |
| | WorkFlows | 146 | 318 | 464 |
| MAY Total | | 662 | 322 | 984 |
| MES | WorkFlows | 1099 | 104 | 1203 |
| MES Total | | 1099 | 104 | 1203 |
| MVES | WorkFlows | 1113 | 171 | 1284 |
| MVES Total | | 1113 | 171 | 1284 |
| ORME | WorkFlows | 84 | | 84 |
| ORME Total | | 84 | | 84 |
| PAUL | None | 23 | | 23 |
| | WorkFlows | 845 | 390 | 1235 |
| | Aspen | | 28 | 28 |
| PAUL Total | | 868 | 418 | 1286 |
| PCL | None | 2 | | 2 |
| | WorkFlows | 100 | 37 | 137 |
| | Aspen | | 4 | 4 |
| PCL Total | | 102 | 41 | 143 |
| PHS | WorkFlows | 36 | 2 | 38 |
| PHS Total | | 36 | 2 | 38 |
| PMH | WorkFlows | 115 | 125 | 240 |
| PMH Total | | 115 | 125 | 240 |
| PPL | BC Mobile | | 572 | 572 |
| | None | 1543 | | 1543 |
| | SIP | 22034 | 922 | 22956 |
| | WorkFlows | 10125 | 12551 | 22676 |
| | Aspen | | 1604 | 1604 |
| PPL Total | | 33702 | 15649 | 49351 |
| PVA2 | None | 110 | | 110 |
| | WorkFlows | 3 | 6 | 9 |
| PVA2 Total | | 113 | 6 | 119 |
| PVPL | BC Mobile | | 162 | 162 |
| | None | 668 | | 668 |
| | SIP | 20899 | 774 | 21673 |
| | WorkFlows | 349 | 9231 | 9580 |
| | Aspen | | 838 | 838 |
| PVPL Total | | 21916 | 11005 | 32921 |
| SED | BC Mobile | | 138 | 138 |
| | None | 266 | | 266 |
| | SIP | 7120 | 54 | 7174 |
| | WorkFlows | 511 | 3132 | 3643 |
| | Aspen | | 661 | 661 |
| SED Total | | 7897 | 3985 | 11882 |
| SEL | BC Mobile | | 1 | 1 |
| | None | 43 | | 43 |
| | WorkFlows | 1302 | 257 | 1559 |
| | Aspen | | 3 | 3 |
| SEL Total | | 1345 | 261 | 1606 |
| SPR | BC Mobile | | 5 | 5 |
| | None | 22 | | 22 |
| | SIP | 45 | 3 | 48 |
| | WorkFlows | 234 | 78 | 312 |
| | Aspen | | 3 | 3 |
| SPR Total | | 301 | 89 | 390 |
| SUSD | WorkFlows | 117 | 62 | 179 |
| SUSD Total | | 117 | 62 | 179 |
| SVES | WorkFlows | 62 | 9 | 71 |
| SVES Total | | 62 | 9 | 71 |
| TCP | None | 1 | | 1 |
| | WorkFlows | 7 | | 7 |
| TCP Total | | 8 | | 8 |
| THS | None | 1 | | 1 |

| | | | | |
|-------------|-----------|--------|-------|--------|
| | WorkFlows | 1495 | 69 | 1564 |
| THS Total | | 1496 | 69 | 1565 |
| VOC | BC Mobile | | 8 | 8 |
| | None | 102 | | 102 |
| | SIP | 1898 | 15 | 1913 |
| | WorkFlows | 341 | 595 | 936 |
| VOC Total | | 2341 | 618 | 2959 |
| WIL | BC Mobile | | 72 | 72 |
| | None | 13 | | 13 |
| | SIP | 499 | 6 | 505 |
| | WorkFlows | 13 | 183 | 196 |
| WIL Total | | 525 | 261 | 786 |
| YAR | BC Mobile | | 15 | 15 |
| | None | 7 | | 7 |
| | SIP | 210 | 2 | 212 |
| | WorkFlows | 340 | 324 | 664 |
| | Aspen | | 1 | 1 |
| YAR Total | | 557 | 342 | 899 |
| YCFLD | None | 1 | | 1 |
| | WorkFlows | 30 | 5 | 35 |
| | Aspen | | 84 | 84 |
| YCFLD Total | | 31 | 89 | 120 |
| YCP | BC Mobile | | 8 | 8 |
| | None | 18 | | 18 |
| | SIP | 560 | 56 | 616 |
| | WorkFlows | 127 | 317 | 444 |
| | Aspen | | 28 | 28 |
| YCP Total | | 705 | 409 | 1114 |
| YCV | None | 9 | | 9 |
| | SIP | 156 | 6 | 162 |
| | WorkFlows | 298 | 260 | 558 |
| YCV Total | | 463 | 266 | 729 |
| YLN | None | 1 | | 1 |
| | SIP | | 196 | 196 |
| | WorkFlows | 33 | 3 | 36 |
| | Aspen | | 149 | 149 |
| YLN Total | | 34 | 348 | 382 |
| Grand Total | | 115788 | 48870 | 164658 |

CIRCULATION USE ITEM - SEPTEMBER 2022

| Station Library | Use Item Transactions |
|-----------------|-----------------------|
| CTW | 402 |
| CVLAB | 4 |
| CVUSD | 304 |
| ERU | 15 |
| PCL | 27 |
| YCP | 92 |
| YCV | 142 |

STATISTICS: CHECKINS

| CHECKINS - SEPTEMBER 2022 | |
|---------------------------|----------------|
| Station Library | Total Checkins |
| AFSD | 67 |
| AJS | 1,104 |
| ASH | 754 |
| BAG | 663 |
| BCC | 1,067 |
| BEA | 1,786 |
| BMHS | 125 |
| BMMS | 154 |
| CJES | 1,303 |
| CLA | 326 |
| CON | 696 |
| COR | 690 |
| CRK | 168 |
| CSES | 314 |
| CTW | 10,333 |
| CVCL | 4,047 |
| CVHS | 51 |
| CVLAB | 1,046 |
| CVPL | 5,127 |
| CVUSD | 575 |
| DHL | 496 |
| ERU | 1,838 |
| GES | 1,872 |
| GHMS | 244 |
| GMMS | 264 |
| HES | 1,315 |
| JER | 145 |
| LES | 2,255 |
| LTS | 1,465 |
| LVES | 937 |
| MAY | 660 |
| MES | 632 |
| MUHS | 1 |
| MVES | 1,113 |
| ORME | 22 |
| PAUL | 971 |
| PCL | 205 |
| PHS | 45 |
| PMH | 159 |
| PPL | 35,622 |
| PVA2 | 6 |
| PVPL | 23,419 |
| SED | 8,136 |
| SEL | 1,292 |
| SPR | 336 |
| STX | 5 |
| SUSD | 120 |
| SVES | 30 |
| TCP | 9 |
| THS | 1,488 |
| VOC | 2,433 |
| WIL | 654 |
| YAR | 608 |

| | |
|-------|---------|
| YCFLD | 76 |
| YCP | 825 |
| YCV | 445 |
| YLN | 18,226 |
| Total | 138,765 |

STATISTICS: OPAC

| Library | Total |
|----------------|--------------|
| Default | 7,562 |
| CTW | 10,286 |
| CVCL | 4,612 |
| CVPL | 3,008 |
| Elementary | 3,285 |
| ERU | 9,870 |
| High | 808 |
| JER | 319 |
| Middle | 188 |
| PCL | 587 |
| PPL | 43,905 |
| PVPL | 32,910 |
| SED | 16,073 |
| YCFLD | 11,644 |
| YCP | 9,225 |

STATISTICS: OVERDRIVE

| | | | |
|----------------------------------|-------|--------------|------|
| USAGE TYPE: ALL DOCUMENTS | | | |
| USER ACTIVITY | | | |
| UNIQUE USERS: 5325 | | | |
| CHECKOUTS | | HOLDS | |
| Audiobook | 10868 | Audiobook | 4178 |
| eBook | 12652 | eBook | 4539 |
| Magazine | 1672 | | |

| BRANCH | CHECKOUTS |
|-----------------------------------|------------------|
| YLN-Prescott | 10510 |
| YLN-Prescott Valley | 4879 |
| YLN-Cottonwood | 2521 |
| YLN-Sedona | 2125 |
| YLN-Camp Verde | 917 |
| YLN-Chino Valley | 888 |
| YLN-Sedona - Village of Oak Creek | 695 |
| YLN-Congress | 206 |
| YLN-Clark Memorial | 194 |
| YLN-Yavapai College | 181 |
| YLN-Dewey-Humboldt Town | 170 |
| YLN-Black Canyon City | 150 |
| YLN-Seligman | 117 |
| YLN-Mayer | 106 |
| YLN-Bagdad | 103 |
| YLN-Embry-Riddle | 89 |
| YLN-Paulden | 74 |
| YLN-Yarnell | 73 |
| YLN-Beaver Creek | 61 |
| YLN-Cordes Lakes | 56 |
| YLN-Wilhoit | 50 |
| YLN-Yavapai Schools | 48 |
| YLN-Spring Valley | 32 |
| YLN-Ash Fork | 30 |
| YLN-Crown King | 15 |
| YLN-Prescott College | 11 |
| YLN-Jerome | 10 |

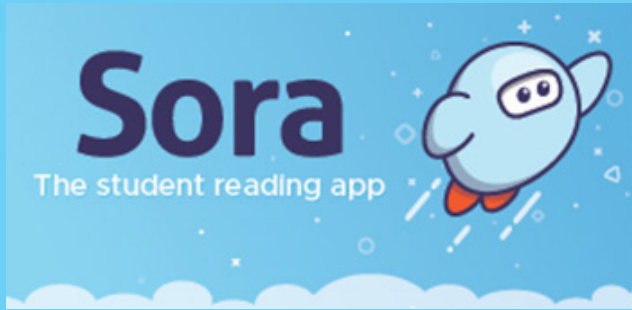
STATISTICS: OVERDRIVE RLA

| CONSORTIUM | Total | audiobook | ebook | videos |
|---|-------------|------------|------------|----------|
| Amphitheater Public Schools | 1 | 1 | 0 | 0 |
| Apache County Library District | 19 | 13 | 6 | 0 |
| Cochise County Library District | 107 | 69 | 38 | 0 |
| Flagstaff City-Coconino County Public Library | 88 | 57 | 31 | 0 |
| Gila County Library District | 16 | 14 | 2 | 0 |
| Little Libraries That Could | 6 | 0 | 6 | 0 |
| Navajo County Library District | 14 | 13 | 1 | 0 |
| Pima County Public Library | 539 | 352 | 187 | 0 |
| Southwest Valley Library Consortium | 14 | 7 | 7 | 0 |
| Tempe Public Library | 39 | 10 | 29 | 0 |
| Yuma County Library District | 38 | 12 | 26 | 0 |
| (blank) | 122 | 47 | 73 | 0 |
| Grand Total | 1003 | 595 | 406 | 0 |

Yavapai Patron Checkouts from other RLA Systems: 3223



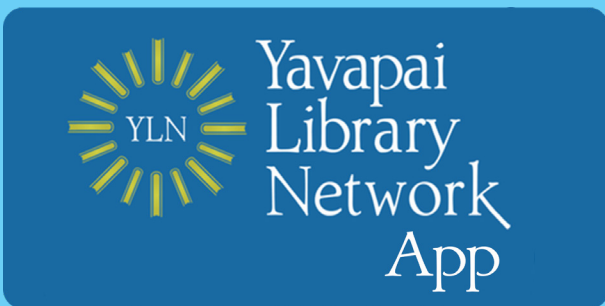
STATISTICS: ONLINE USAGE



| | |
|----------------------------|--------|
| Books Opened | 4013 |
| Time Read (hours) | 711.22 |
| Avg Time per Book (min) | 43.39 |
| Avg Time per Session (min) | 27.34 |
| Avg Time per User (min) | 27.67 |
| Unique Users | 502 |



| Library | Total Titles Used | Total Unique Users | Total Book Downloads | Total Chapter Downloads | Top 5 Most Used Subjects |
|---------|-------------------|--------------------|----------------------|-------------------------|--|
| TOTAL | 667 | 466 | 112 | 244 | Psychology, Religion, Social Science, History, Juvenile Literature |



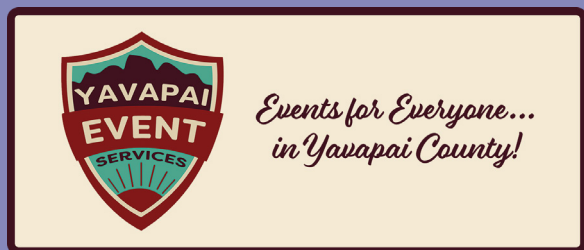
| Usage by Platform | | |
|-------------------|---------|----------|
| Platform Type | Devices | Launches |
| Amazon-FireOS | 2 | 23 |
| Android | 519 | 3525 |
| iPad | 211 | 1269 |
| iPhone | 1023 | 6937 |
| iPod Touch | 1 | 50 |
| TOTAL | 1756 | 11804 |

Aspen App: 67 logins

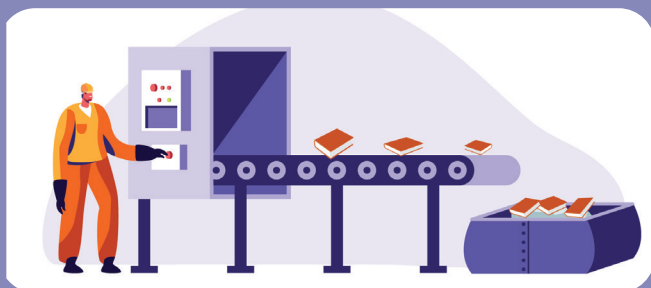
STATISTICS: ONLINE USAGE



| | |
|-------------------------|-------|
| TOTAL SESSIONS | 310 |
| Mobile Sessions | 106 |
| Avg Learning Time (min) | 16.28 |



| Month | # Programs Happening | # of Users Visiting |
|-----------|----------------------|---------------------|
| September | 411 | 1707 |



| | |
|--------------------|-------|
| AMH Sorter [Ethel] | |
| Items/Month | 59066 |



SMS Notices

| | |
|----------------|------|
| Hold Notice | 5239 |
| Manual Text | 32 |
| Overdue Notice | 628 |

| | |
|--|------|
| Ash Fork Public Library | 90 |
| Bagdad Public Library | 92 |
| Black Canyon City Community Library | 33 |
| Beaver Creek Public/School Library | 32 |
| Clark Memorial Library | 45 |
| Congress Public Library | 41 |
| Cordes Lakes Public Library | 84 |
| Crown King Public Library | 7 |
| Cottonwood Public Library | 813 |
| Camp Verde Community Library | 121 |
| Chino Valley Public Library | 186 |
| Dewey-Humboldt Town Library | 46 |
| Embry-Riddle Aeronautical University Library | 15 |
| Jerome Public Library | 10 |
| Mayer Public Library | 39 |
| Paulden Public Library | 58 |
| Prescott College Library - Prescott | 3 |
| Prescott Public Library | 2397 |
| Prescott Valley Public Library Drive-up Window | 1 |
| Prescott Valley Public Library | 1176 |
| Sedona Public Library | 306 |
| Seligman Public Library | 21 |
| Spring Valley Library | 7 |
| SPL in the Village | 94 |
| Wilhoit Public Library | 27 |
| Yarnell Public Library | 42 |
| Yavapai College - Prescott | 56 |
| Yavapai College - Verde | 22 |

STATISTICS - I-TIVA (TM3)

| Date | Patrons | Rejected Records | Total Attempts | Total Deliveries | Patron Logins on MESSAGE call |
|---------------------|-------------|------------------|----------------|------------------|-------------------------------|
| 9/1/2022 | 114 | | 259 | 69 | |
| 9/2/2022 | 107 | 3 | 244 | 63 | |
| 9/3/2022 | 81 | 3 | 184 | 44 | |
| 9/4/2022 | 41 | 1 | 41 | 12 | |
| 9/5/2022 | 40 | 1 | 93 | 22 | |
| 9/6/2022 | 10 | | 22 | 6 | |
| 9/7/2022 | 90 | 16 | 205 | 50 | |
| 9/8/2022 | 122 | 25 | 284 | 70 | |
| 9/9/2022 | 108 | 11 | 246 | 61 | |
| 9/10/2022 | 53 | 2 | 119 | 32 | |
| 9/11/2022 | 21 | | 21 | 5 | |
| 9/12/2022 | 35 | | 78 | 22 | |
| 9/13/2022 | 48 | | 112 | 28 | |
| 9/14/2022 | 93 | 5 | 213 | 54 | |
| 9/15/2022 | 82 | 6 | 189 | 47 | |
| 9/16/2022 | 90 | 4 | 204 | 52 | |
| 9/17/2022 | 83 | 1 | 194 | 47 | |
| 9/18/2022 | 22 | | 22 | 8 | |
| 9/19/2022 | 30 | | 70 | 18 | |
| 9/20/2022 | 47 | | 111 | 26 | |
| 9/21/2022 | 110 | 1 | 257 | 64 | |
| 9/22/2022 | 111 | 6 | 257 | 63 | |
| 9/23/2022 | 90 | 7 | 208 | 50 | |
| 9/24/2022 | 68 | 3 | 163 | 26 | |
| 9/25/2022 | 19 | | 19 | 6 | |
| 9/26/2022 | | | | | |
| 9/27/2022 | 92 | 1 | 210 | 53 | |
| 9/28/2022 | 96 | 11 | 225 | 54 | |
| 9/29/2022 | 100 | 16 | 233 | 56 | |
| 9/30/2022 | 82 | 5 | 191 | 48 | |
| Grand Total: | 2085 | 128 | 4674 | 1156 | |

I-Tiva Month To Date MESSAGE Report used

