

Yavapai  
Library  
Network  
Monthly Report



May  
2023

# MANAGER'S LOWDOWN

Greetings!

My name is Karie Straube and I am the new Assistant Director for the Library District and the new Library Network Manager for the Yavapai Library Network. Many of you already know me, because for the last 3 and a half years I have been the YLN Cataloger. I've visited almost all your libraries and have cataloged for over 50 of them. Moving from one position that directly serves the entire YLN to another feels like a natural progression, and I look forward to getting to know you all in this new capacity.

I have been involved with libraries since college, when I was a student worker at the Cline Library at Northern Arizona University. After transferring to Arizona State University, I got my degree in English with a minor in History. I got my MLS from Emporia State University while working full time as an authority control editor at Blackwell North America. Since graduating, I have worked in both academic and public libraries. While my titles were 'Collection Development Librarian' and 'Technical Services Librarian', I spent much of my time directly helping the public at the reference and circulation desks. I was always the libraries' liaison with the city or university IT departments, and was also the go-to person for helping patrons and fellow staff members troubleshoot software and devices.

When the library's IT person became ill in my first professional position, I stepped in and attended sysadmin training at Sirsi (before it became SirsiDynix). Since then, I have been the system administrator in every library I have worked, prior to coming to the YLN. I've participated in three ILS migrations and was entirely responsible for the last one which took place the year before I moved here. All of this experience has given me a well-rounded background that will be beneficial to serving the Network.

Outside of work I enjoy gardening and teaching Sunday school at American Lutheran Church. I have also written four novels and 17 very challenging word search books. I write under pen names, and while I will happily divulge one of them, the novels will remain a mystery!

Now, on to current happenings in the Network:

## ILS RFP

The ILS Evaluation Committee has been making steady progress. Three vendors submitted bids for our RFP, and we anticipate demonstrations in the next few weeks. The demonstrations will be open

to anyone in the Network who wants to attend, provided they first sign a Technical Advisor NDA. More information about that will be forthcoming when the demos are scheduled.

## LSTA Grant for Authority Control

This spring I applied for an LSTA grant and was awarded \$32,000. This will go towards a one-time de-duplication of the bibliographic records in our catalog as well as a one-time backfile processing of our authority file. I'm looking forward to having a 'cleaned-up' catalog, whether we migrate to a new ILS or stay with SirsiDynix.

As I draw this first report to a close, I would like to mention that over the last few years, while working for the Yavapai Library Network, I've been impressed with how our unique libraries have worked together and supported each other, particularly during the uncertain times of the pandemic. The public libraries have served as transit drop-off/pick-up locations for the school libraries, and have modeled resource sharing for students by fulfilling holds; the academics have supported the publics by voting money for Overdrive, even though their own patrons aren't the primary users of that service; the publics and academics have both provided money for Sora, which is exclusively used by the schools; and the schools are actively engaging students with books and reading, developing the habits of lifelong learning that will ensure patrons for all of the libraries in years to come.

The addition of the County School Librarian position, which was initially partly funded by the YLN, has helped to keep school library staff engaged and trained and our school libraries vibrant. (I came from an area in which the school libraries were gutted and de-staffed, so the fact that this County and Network understand the value of them is a welcome change). The Yavapai Library Network has been attracting state and national attention as a model for how to have a network of different library types all working together for a common good. I am confident that we can continue this history of collaboration and achieve great things together. I look forward to working with you to make our Network stronger than ever before.

Thank you!

Karie

928-442-5723

karie.straube@yavapaiaz.gov



# MEMBER NEWS

Chino Valley Public Library

Events happening at the library:

- Partnering with Arizona's Children Association to provide Kindergarten Readiness Backpack Giveaway and Hearing/Vision screening.
- Ordering some Vox VR (virtual reality) book/goggle kits for kids to start a small collection (12 titles so far that work with a QR code/app)
- Continuing beginner computer classes (held 2 sets of dates in the past 9 months, more planned)
- And of course lots of Summer Reading Fun! Our free live performer events are for all ages each Wednesday morning (typically 10 & 11 am) from June 7 until our finale party on July 19. Take home crafts, prizes, some guest authors/readers at Storytime, etc. We're even hosting an Anime Drawing Workshop!



Thinking about kindergarten options?  
Looking for ways to give your child a head start?  
If so, bring your family to our **FREE** event!



## Kindergarten Readiness Fair

May 16<sup>th</sup>/10:30-11:30

Chino Valley Public Library

Memory Park

1020 Palomino Road

Chino Valley



- \* **Free backpack for 3-5 year olds**
- \* **Free hearing & vision screening**
- \* **Take-home activities for the children**
- \* **School readiness resources**

Questions: Jan Lee: [Jlee@arizonaschildren.org](mailto:Jlee@arizonaschildren.org)

Rebecca Laurence: Chino Valley Library

SUPPORTED BY

**# FIRST THINGS FIRST**



We are Arizona's best resource for helping children and families!  
For more information, visit us online at [www.ArizonasChildren.org](http://www.ArizonasChildren.org).

# PRIORITIES

## Help Desk

A help desk request, or work order, is the submission of a problem that one encounters during the normal operation of a YLN service. Requests are generally submitted via e-mail to [help@yln.info](mailto:help@yln.info). If a request is submitted via telephone, then a YLN staff person will create the request for the submitter. Help desk requests will always be our highest priority because in some cases a member library employee cannot complete a work function until the issue is resolved.

**Total requests submitted: 63**

**Total requests resolved: 55**

**Total unresolved requests opened this month: 8**

**Total requests still open: 16**



# STATISTICS: HOLDS

HOLDS - May 2023					
Hold Inactive Reason	CANCELLED	EXP_ONSHLF	EXPIRED	FILLED	Total
Pickup Library	Number of Holds	Number of Holds	Number of Holds	Number of Holds	Number of Holds
AJS	1	1		7	9
ASH	26	13		420	459
BAG	13	41		137	191
BCC	47	19		451	517
BEA	78	41	2	293	414
CJES		15		2	17
CLA	6	5	1	105	117
CON	26	4		281	311
COR	28	3		346	377
CRK	6	1	1	48	56
CSES				1	1
CTW	287	219	10	2,597	3,113
CVCL	89	66	5	923	1,083
CVLAB	2			3	5
CVPL	98	78	5	1,162	1,343
CVUSD	3	2		1	6
DEL	3	4		13	20
DHL	29	9	5	174	217
ERU	15	12	1	115	143
GES				1	1
GMMS	1				1
HES	7				7
HMS	1	5			6
JER		1		45	46
LES				1	1
MAY	33	10		253	296
MUHS	1				1
MVES				1	1
PAUL	43	9		596	648
PCL	1	1		5	7
PHS				12	12
PMH	1				1
PPL	1,235	725	47	8,666	10,673
PVA2	260	57	8	1,428	1,753
PVPL	552	435	4	4,518	5,509
SED	398	198	8	2,591	3,195
SEL	63	34		365	462
SPR	7	10		183	200
TCP	1	1			2
VOC	166	80	11	1,250	1,507
WIL	23	38		212	273

# STATISTICS: HOLDS

Hold Inactive Reason	CANCELLED	EXP_ONSHLF	EXPIRED	FILLED	Total
Pickup Library	Number of Holds	Number of Holds	Number of Holds	Number of Holds	Number of Holds
YAR	17	6		396	419
YCFLD	5	1		16	22
YCP	19	21	1	106	147
YCP2	2			5	7
YCV	20	5		82	107
YCV2			1	13	14
YLN	1			5	6
<b>Total</b>	<b>3,614</b>	<b>2,170</b>	<b>110</b>	<b>27,829</b>	<b>33,723</b>

# STATISTICS: TRANSITS

ITEMS TRANSITED - MAY 2023																	
Station Library																	
Item Library	Total	AJS	ASH	BAG	BCC	BEA	CJES	CLA	CON	COR	CRK	CSES	CTW	CVCL	CVLAB	CVCL	CVLAB
Total	21,124	9	401	178	407	354	20	98	254	302	42	2	2,072	898	30	928	4
ASH	204			1	3	2		2	1	4			18	11			
BAG	320		12		3	1		2	9	3			23	16			
BCC	359		11			10	5	4	4	8	1		23	13		8	
BEA	233		9	1			1	1	3	4	4		15	5		5	
BMMS	1						1									12	
CLA	204		3	4	6	4	1		6	2		1	17	6		10	
CON	167		11	4	3	5				5			10	7		1	
COR	273		9	2	3	2		3	9				16	7			
CRK	73			1	4			2	2	1			4	1			
CSES	1						1										6
CTW	2,588		44	16	65	42	1	4	28	43	3			113	1	6	
CVCL	695	1	15	12	18	15			6	1	2		92			24	
CVPL	1,153		18	5	31	9		2	14	16	1		123	39		2	
CVUSD	26						1								25		
DHL	133		5	4	1	2			2	2			13	8		122	
ERU	149		2		6	4		3					11	6			
GMMS	4																
JER	203				2	1		2	2				24	6			
LTS	1																39
MAY	263		8	2	5	8		3	4	3			19	7	2	2	2
MVES	1											1					7
ORME	4			4													2
PAUL	167		3	3	3				1	3			10	9			
PCL	137		2		2	2		2					12	7		1	
PMH	1						1										
PPL	5,256	4	116	62	108	121	3	32	73	97	16		753	300	2		
PVPL	3,044	4	53	30	60	34	2	17	41	38	6		348	143			
SED	2,606		32	18	21	41		9	17	26	5		313	77		5	
SEL	192		5		4	5			4	5			22	13			
SPR	211		1	1	16					2	1		9	3			
STX	72		4	2					2	5			2	4		1	
VOC	434		3	2	4	9		1	1	2	1		23	18		3	
WIL	170		4		2	4		1	3	5			12	5		1	
YAR	388		12	1	7	7		1	16	11			28	20			
YCFLD	4					1				1						1	
YCP	954		17	1	17	18	1	7	3	9	1		92	32			
YCV	431		2	2	13	7	2		3	6	1		40	22		8	
YLN	2															3	

# STATISTICS: TRANSITS

ITEMS TRANSITED - May 2023																					
Station Library																					
Item Library	CVPL	CVUSD	DEL	DHL	ERU	GES	GMMS	HMS	JER	LES	MAY	MVES	PAUL	PCL	MES	MUHS	MVES	ORME	PAUL	PCL	
Total	1,026	4	20	176	128	2	1	5	46	1	243	1	566	6	1	8	1	4	479	13	
ASH	11										1		13								
BAG	11			1				1			3		28								
BCC	12			3	2				2		2		29						8		
BEA	13			4	1						4		14						19		
BMMS																			16		
CLA	9	1		2	1								24						13		
CON	11		1	1							1		13								
COR	8			1	2				2		3		28								
CRK	3										1		4								
CSES																1	1			12	
CTW	113		3	26	13						26		44							8	
CVCL	31		2	11	4				5	1	2		16	1				1		18	
CVPL		1	3	10	1				1		7		35							4	
CVUSD																					
DHL	3										3		3						28	1	
ERU	8			1									6			2			7		
GMMS				2																	
JER	4			1	1						5		7								
LTS																1				14	
MAY	10			1	2								21							1	
MVES																				8	
ORME															1					2	
PAUL	8			2	2			1			4									1	
PCL	3			1	1								2								
PMH																					
PPL	401	2	7	51	46	1	1	3	14		103		83	1							
PVPL	176			21	20	1			8		38		67	2							
SED	96		2	18	14				9		18		20							12	
SEL	1			2	1						3		13							1	
SPR	13				1						2		25								
STX	2				1						3		2								
VOC	4			2					1			1	3							15	
WIL	15			1	1						1		26							1	
YAR	12			5	1						4		32	1						1	
YCFLD													1								
YCP	38		1	7	10				1		7		5								
YCV	10		1	2	3				3		2		2	1							
YLN																				7	



# STATISTICS: TRANSITS

ITEMS TRANSITED - MAY 2023															
Station Library															
Item Library	PHS	PPL	PVA2	PVPL	SED	SEL	SPR	TCP	VOC	WIL	YAR	YCFLD	YCP	YCV	YLN
Total	12	4,889	91	4,204	1,924	336	218	1	1,235	316	342	12	123	84	45
ASH		44	1	51	14		2		5	8	12				
BAG		75	1	80	23	8	7		4	3	3	1	2		
BCC		82	2	71	22	10	11		12	4	7	3	5	1	
BEA		45	3	55	24	7	8		6	2	1	2		1	
BMMS															
CLA		41		34	16	5	1		10	2	7	1			
CON		29	1	36	11	2	1		3	1	6	1	3	1	
COR		63	2	72	19	5	5		2	3	5	2			
CRK		10		22	5	1	6		2		3		1		
CSES															
CTW		902	11	618	212	40	14		111	25	42		9	17	2
CVCL		229	2	139	39	11	1		26	3	7		2	1	
CVPL		350	5	272	82	8	24		45	13	24		6	8	
CVUSD															
DHL		30		33	9	4			7	2	1		1		
ERU		44		24	22		2		3	4			3		
GMMS										1					1
JER		59	1	41	24	1	2		14	1	3		1	1	
LTS				1											
MAY		58	1	48	18	3	8		14	7	7		2		2
MVES															
ORME															
PAUL	1	50	2	28	15	4	1		5	2	7		3		
PCL		52	1	24	20		2		3					1	
PMH															
PPL	9		15	1,470	605	115	46		320	112	97	1	41	18	7
PVPL	2	1,260	25		299	54	17		137	53	62		13	12	1
SED		791	8	545		25	21	1	421	17	23		14	3	1
SEL		35		39	11		5		6	11	6		1		
SPR		42	1	68	7	6			3	5	1		3	1	
STX		19		20		1	2		2	1					
VOC		65		42	237	2	2			5	4		2		
WIL		32	1	23	16	3	3		6		3	1	2		
YAR		87	3	70	29	3	8		12	17			1		
YCFLD							1								
YCP		288	3	202	103	11	5		40	10	6			19	
YCV		106	2	75	42	7	13		16	4	5		8		31
YLN		1		1											

# STATISTICS: DISCARDED & ADDED

DISCARDS - MAY 2023	
Station Library	Library Use Transactions
AJS	35
ASH	47
BAG	4
BCC	3
BEA	30
BMHS	126
BMMS	4
CJES	2
COR	1
CTW	393
CVCL	2,154
CVHS	8
CVLAB	1
CVPL	17
CVUSD	1,480
DEL	106
DHL	3
ERU	2
GES	10
HES	4
HMS	147
JER	3
LES	286
LTS	9
MAY	7
MES	2
MVES	5
PHS	30
PMH	1
PPL	1,329
PVPL	141
SED	621
SPR	17
SUSD	223
SVES	38
THS	5
VOC	7
WIL	12
YAR	1
YCFLD	1
YCP	479
YCV	3,989
YLN	34,700
<b>Total</b>	<b>46,483</b>

ITEMS ADDED - MAY 2023	
Item Library	Total Copies
AFSD	12
AJS	29
ASH	56
BAG	71
BCC	48
BEA	16
BMMS	15
CJES	36
CLA	10
CON	20
COR	2
CRK	12
CSES	50
CTW	298
CVCL	578
CVHS	61
CVLAB	6
CVPL	311
CVUSD	114
DEL	317
DHL	10
ERU	22
GES	82
GHMS	14
GMMS	70
HES	60
HMS	358
JER	32
LES	46
LTS	122
LVES	88
MAY	44
MES	50
ORME	14
PAUL	22
PHS	12
PPL	922
PVPL	453
SED	468
SEL	61
SPR	1
SUSD	1
SVES	126
THS	116
VOC	80
WIL	62
YAR	55
YCP	78
YCV	4
YLN	9
<b>Grand Total</b>	<b>5544</b>

TOTAL ITEMS - MAY 2023	
Item Library	Total Copies
AFSD	4,154
AJS	13,888
ASH	5,385
BAG	15,771
BCC	11,930
BEA	12,724
BMHS	30,193
BMMS	8,004
CJES	11,388
CLA	9,223
CON	6,437
COR	6,779
CRK	3,472
CSES	4,520
CTW	86,806
CVCL	28,346
CVHS	15,942
CVLAB	4,578
CVPL	52,591
CVUSD	23,369
DEL	11,340
DHL	5,827
ERU	27,788
GES	12,486
GHMS	9,825
GMMS	9,860
HES	8,939
HMS	20,634
JER	14,283
LAW	1,784
LES	12,694
LTS	13,726
LVES	8,456
MAY	10,527
MES	4,950
MUHS	5,309
MVES	9,831
ORME	8,976
PAUL	7,131
PCL	34,348
PHS	11,560
PMH	9,224
PPL	129,278
PVCV	4,623
PVPL	90,582
SED	63,447
SEL	7,069
SHM	8,054
SPR	5,333
STX	805
SUSD	6,931
SVES	7,171
TCP	1,242
THS	11,139
VOC	4,954
VVAC	3,076
WIL	5,483
YAR	9,981
YAV	4,120
YCC	2,156
YCFLD	59
YCP	58,895
YCV	3,141
YLN	21
<b>Total</b>	<b>1,042,558</b>

# STATISTICS: USERS

NEW USERS -MAY 2023	
User Library	Number of Users
ASH	26
BAG	17
BCC	21
BEA	5
BMHS	1
CLA	11
CON	5
COR	20
CRK	1
CTW	183
CVCL	75
CVHS	1
CVPL	96
DEL	1
DHL	8
ERU	26
GMMS	1
HES	5
HMS	2
JER	1
LES	4
LTS	1
LVES	2
MAY	8
MVES	5
ORME	9
PAUL	13
PCL	26
PHS	1
PMH	3
PPL	345
PVPL	300
SED	90
SEL	9
SPR	6
VOC	17
WIL	3
YAR	13
YCP	8
Grand Total	1369

TOTAL USERS - MAY 2023	
User Library	Number of Users
AFSD	366
AJS	1,037
ASH	786
BAG	616
BCC	834
BEA	1,194
BMHS	2,981
BMMS	517
CJES	661
CLA	575
CON	606
COR	924
CRK	145
CSES	952
CTW	11,648
CVCL	4,872
CVHS	1,559
CVLAB	26
CVPL	5,388
CVUSD	2,491
DEL	513
DHL	528
ERU	6,143
GES	817
GHMS	680
GMMS	755
HES	537
HMS	610
JER	211
LAW	1
LES	712
LTS	1,240
LVES	635
MAY	748
MES	1,640
MUHS	1,922
MVES	563
ORME	604
PAUL	729
PCL	4,116
PHS	2,280
PMH	1,058
PPL	25,163
PVA2	1
PVCV	17
PVPL	17,630
SED	8,559
SEL	627
SHM	2
SPR	522
SUSD	273
SVES	68
TCP	26
THS	1,027
VOC	1,532
WIL	211
YAR	528
YAV	1
YCC	1
YCFLD	13

YCP	1,213
YCV	732
YLN	20
Total	123,386

# STATISTICS: BILLS

## PATRON BILLS - May 2023

Bill Library Code	# of Bills	Bill Amount	Bill Payment Amount
<b>Total</b>	<b>271</b>	<b>\$3,259.70</b>	<b>\$3,242.10</b>
AJS	3	\$37.00	\$37.00
BCC	2	\$10.00	\$10.00
BMHS	2	\$5.30	\$5.30
BMMS	1	\$14.99	\$14.99
CTW	23	\$73.00	\$72.00
CVLAB	12	\$130.95	\$125.95
CVPL	29	\$122.76	\$111.16
CVUSD	8	\$101.00	\$101.00
DEL	9	\$70.36	\$70.36
ERU	4	\$304.00	\$304.00
GES	2	\$29.00	\$29.00
GHMS	2	\$12.00	\$12.00
HES	2	\$11.00	\$11.00
HMS	1	\$125.00	\$125.00
LES	11	\$181.95	\$181.95
LTS	9	\$92.02	\$92.02
MUHS	12	\$23.85	\$23.85
PCL	1	\$10.00	\$10.00
PHS	1	\$1.20	\$1.20
PPL	78	\$1,120.28	\$1,120.28
PVPL	24	\$407.74	\$407.74
SED	20	\$242.35	\$242.35
THS	11	\$82.95	\$82.95
VOC	3	\$45.00	\$45.00
YCP	1	\$6.00	\$6.00



# STATISTICS: CIRCULATION

## CIRCULATION - MAY 2023

Station Library	Client Types	Charge Item Part B	Renew Item	Grand Total
AFSD	WorkFlows	1		1
	Aspen		2	2
AFSD Total		1	2	3
AJS	WorkFlows	425	40	465
	Aspen		1	1
AJS Total		425	41	466
ASH	None	2		2
	SIP	939	8	947
	WorkFlows	71	269	340
	Aspen		12	12
ASH Total		1012	289	1301
BAG	None	29		29
	SIP	382		382
	WorkFlows	146	449	595
	Aspen		2	2
BAG Total		557	451	1008
BCC	None	14		14
	SIP	687	1	688
	WorkFlows	196	362	558
	Aspen		1	1
BCC Total		897	364	1261
BEA	None	80		80
	WorkFlows	826	502	1328
	Aspen		13	13
BEA Total		906	515	1421
BMHS	WorkFlows	8	126	134
	Aspen		17	17
BMHS Total		8	143	151
BMMS	WorkFlows	23	4	27
	Aspen		1	1
BMMS Total		23	5	28
CJES	None	6		6
	WorkFlows	350	23	373
CJES Total		356	23	379
CLA	None	2		2
	SIP	164	1	165
	WorkFlows	75	134	209
	Aspen		1	1
CLA Total		241	136	377
CON	None	9		9
	SIP	530	9	539
	WorkFlows	96	121	217
	Aspen		5	5
CON Total		635	135	770
COR	SIP	495	1	496
	WorkFlows	396	224	620
	Aspen		26	26
COR Total		891	251	1142
CRK	None	82		82
	WorkFlows	122	50	172
	Aspen		11	11
CRK Total		204	61	265
CSES	WorkFlows	21		21
CSES Total		21		21
CTW	None	59		59
	SIP	9268	358	9626

	WorkFlows	329	4371	4700
	Aspen		435	435
CTW Total		9656	5164	14820
CVCL	None	55		55
	SIP	2393	20	2413
	WorkFlows	1270	1617	2887
	Aspen		209	209
CVCL Total		3718	1846	5564
CVHS	WorkFlows	41	17	58
	Aspen		8	8
CVHS Total		41	25	66
CVLAB	WorkFlows	273	6	279
	Aspen		8	8
CVLAB Total		273	14	287
CVPL	None	38		38
	SIP	1656	21	1677
	WorkFlows	2761	2266	5027
	Aspen		68	68
CVPL Total		4455	2355	6810
CVUSD	None	1		1
	SIP	26		26
	WorkFlows	45	18	63
	Aspen		7	7
CVUSD Total		72	25	97
DEL	WorkFlows	352	70	422
DEL Total		352	70	422
DHL	None	6		6
	SIP	45	9	54
	WorkFlows	391	137	528
	Aspen		1	1
DHL Total		442	147	589
ERU	None	2		2
	SIP	102	5	107
	WorkFlows	673	115	788
	Aspen		6	6
ERU Total		777	126	903
GES	WorkFlows	652	53	705
GES Total		652	53	705
GHMS	WorkFlows	3		3
GHMS Total		3		3
GMMS	WorkFlows	5	12	17
GMMS Total		5	12	17
HES	WorkFlows	12	8	20
HES Total		12	8	20
HMS	WorkFlows	5		5
HMS Total		5		5
JER	WorkFlows	104	112	216
JER Total		104	112	216
LES	WorkFlows	18	202	220
LES Total		18	202	220
LTS	WorkFlows	353	16	369
LTS Total		353	16	369
LVES	WorkFlows	189	23	212
LVES Total		189	23	212
MAY	None	3		3
	SIP	524	3	527
	WorkFlows	175	243	418
MAY Total		702	246	948
MES	WorkFlows	246	49	295
MES Total		246	49	295
MUHS	WorkFlows	3	6	9

# STATISTICS: CIRCULATION

	Aspen		2	2
MUHS Total		3	8	11
MVES	WorkFlows	488	63	551
MVES Total		488	63	551
PAUL	None	1		1
	WorkFlows	1006	470	1476
PAUL Total		1007	470	1477
PCL	WorkFlows	26	49	75
	Aspen		9	9
PCL Total		26	58	84
PHS	WorkFlows	12	1	13
PHS Total		12	1	13
PMH	WorkFlows	1	4	5
	Aspen		5	5
PMH Total		1	9	10
PPL	None	1850		1850
	SIP	21231	811	22042
	WorkFlows	10408	12563	22971
	Aspen		2300	2300
PPL Total		33489	15674	49163
PVA2	None	81		81
	WorkFlows	2	2	4
PVA2 Total		83	2	85
PVPL	None	968		968
	SIP	19527	581	20108
	WorkFlows	271	9405	9676
	Aspen		1264	1264
PVPL Total		20766	11250	32016
SED	None	122		122
	SIP	6553	121	6674
	WorkFlows	945	3426	4371
	Aspen		630	630
SED Total		7620	4177	11797
SEL	None	10		10
	WorkFlows	1107	293	1400
SEL Total		1117	293	1410
SPR	SIP	31		31
	WorkFlows	255	73	328
SPR Total		286	73	359
SUSD	WorkFlows		3	3
SUSD Total			3	3
SVES	WorkFlows	3		3
SVES Total		3		3
VOC	None	40		40
	SIP	1932	9	1941
	WorkFlows	134	491	625
VOC Total		2106	500	2606
WIL	None	20		20
	SIP	453	5	458
	WorkFlows	40	174	214
	Aspen		1	1
WIL Total		513	180	693
YAR	None	5		5
	SIP	545	2	547
	WorkFlows	542	221	763
	Aspen		9	9
YAR Total		1092	232	1324
YCFLD	WorkFlows	11	3	14
	Aspen		486	486
YCFLD Total		11	489	500
YCP	None	5		5

	SIP	443	12	455
	WorkFlows	31	352	383
	Aspen		43	43
YCP Total		479	407	886
YCV	SIP	233	1	234
	WorkFlows	156	467	623
YCV Total		389	468	857
YLN	None	32		32
	WorkFlows	15	3	18
	Aspen		356	356
YLN Total		47	359	406
Grand Total		97790	47625	145415

## CIRCULATION USE ITEM - MAY 2023

Station Library	Use Item Transactions
CTW	365
CVUSD	161
ERU	4
MAY	1
PCL	5
SED	132
SPR	342
VOC	8
YCP	88
YCV	6

# STATISTICS: CHECKINS

CHECKINS - MAY 2023	
Station Library	Total Checkins
AFSD	9
AJS	908
ASH	967
BAG	499
BCC	946
BEA	1,260
BMHS	1,438
BMMS	182
CJES	864
CLA	247
CON	667
COR	835
CRK	208
CSES	248
CTW	10,402
CVCL	6,244
CVHS	856
CVLAB	672
CVPL	4,496
CVUSD	2,072
DEL	1,056
DHL	492
ERU	934
GES	1,440
GHMS	23
GMMS	140
HES	317
HMS	364
JER	159
LES	659
LTS	1,032
LVES	670
MAY	721
MES	613
MUHS	52
MVES	772
ORME	70
PAUL	1,044
PCL	86
PHS	172
PMH	26
PPL	34,806
PVPL	21,373
SED	8,570
SEL	1,075
SPR	250
STX	3
SUSD	4
SVES	83
TCP	1
THS	209
VOC	2,344

WIL	522
YAR	1,128
YCFLD	62
YCP	847
YCV	2,524
YLN	368
Total	119,031

# STATISTICS: OPAC

<b>Library</b>	<b>Total</b>
Default	10,393
CTW	13,110
CVCL	5,398
CVPL	2,741
Elementary	3,502
ERU	5,691
High	621
JER	282
Middle	349
PCL	462
PPL	41,891
PVPL	33,880
SED	16,651
YCFLD	9,394
YCP	23,398



# STATISTICS: OVERDRIVE

<b>USAGE TYPE: ALL DOCUMENTS</b>			
<b>USER ACTIVITY</b>			
<b>UNIQUE USERS: 5820</b>			
<b>CHECKOUTS</b>		<b>HOLDS</b>	
Audiobook	11979	Audiobook	4291
eBook	13028	eBook	4674
Magazine	1893		

<b>BRANCH</b>	<b>CHECKOUTS</b>
YLN-Prescott	11061
YLN-Prescott Valley	5091
YLN-Cottonwood	2632
YLN-Sedona	2384
YLN-Chino Valley	1090
YLN-Camp Verde	877
YLN-Sedona - Village of Oak Creek	675
YLN-Yavapai College	230
YLN-Dewey-Humboldt Town	183
YLN-Congress	179
YLN-Clark Memorial	178
YLN-Seligman	169
YLN-Mayer	133
YLN-Yarnell	128
YLN-Black Canyon City	124
YLN-Embry-Riddle	116
YLN-Paulden	113
YLN-Beaver Creek	92
YLN-Cordes Lakes	86
YLN-Yavapai Schools	57
YLN-Bagdad	54
YLN-Wilhoit	46
YLN-Ash Fork	43
YLN-Jerome	39
YLN-Spring Valley	25
YLN-Crown King	17
YLN-Prescott College	17

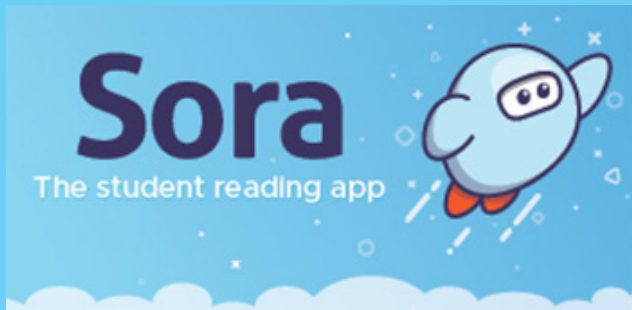
# STATISTICS: OVERDRIVE RLA

CONSORTIUM	Total	audiobook	ebook	videos
Amphitheater Public Schools	6	1	5	0
Apache County Library District	57	40	17	0
Cochise County Library District	128	94	34	0
Flagstaff City-Coconino County Public Library	106	73	33	0
Gila County Library District	21	11	10	0
Little Libraries That Could	9	5	4	0
Navajo County Library District	33	19	14	0
Pima County Public Library	504	256	248	0
Southwest Valley Library Consortium	43	20	23	0
Tempe Public Library	130	81	49	0
Yuma County Library District	24	12	12	0
(blank)	155	55	98	0
<b>Grand Total</b>	<b>1216</b>	<b>667</b>	<b>547</b>	<b>0</b>

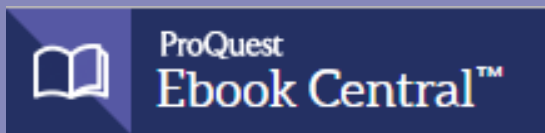
Yavapai Patron Checkouts from other RLA Systems: 3309



# STATISTICS: ONLINE USAGE



Books Opened	3071
Time Read (hours)	760.74
Avg Time per Book (min)	52.91
Avg Time per Session (min)	35.79
Avg Time per User (min)	35.02
Unique Users	491



Library	Total Titles Used	Total Unique Users	Total Book Downloads	Total Chapter Downloads	Top 5 Most Used Subjects
TOTAL	505	301	62	108	Literature, History, Psychology, Social Science, Education



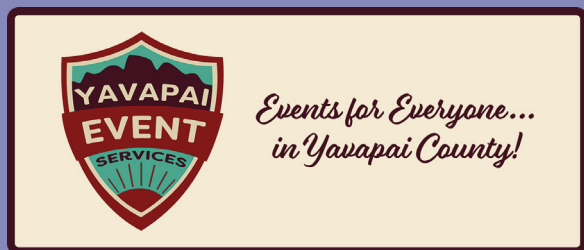
Logins	1195
Holds Placed	4830

(loginToLiDA/placeHold)

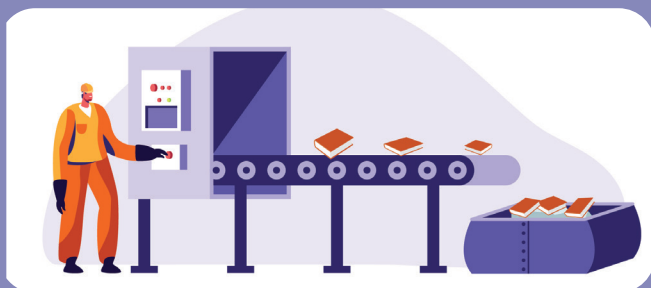
# STATISTICS: ONLINE USAGE



TOTAL SESSIONS	379
Mobile Sessions	179
Avg Learning Time (min)	12.58



Month	# Programs Happening	# of Users Visiting
May	455	2200



AMH Sorter [Ethel]	
Items/Month	58259



## SMS Notices

Hold Notice	5031
Manual Text	54
Overdue Notice	2810

Ash Fork Public Library	102
Bagdad Public Library	77
Black Canyon City Community Library	17
Beaver Creek Public/School Library	31
Clark Memorial Library	39
Congress Public Library	64
Cordes Lakes Public Library	87
Crown King Public Library	6
Cottonwood Public Library	791
Camp Verde Community Library	167
Chino Valley High School Library	1
Chino Valley Public Library	215
Dewey-Humboldt Town Library	45
Embry-Riddle Aeronautical University Library	6
Jerome Public Library	8
Mayer Public Library	61
Paulden Public Library	85
Prescott College Library - Prescott	1
Prescott Public Library	2205
Prescott Valley Public Library	928
Sedona Public Library	298
Seligman Public Library	21
Spring Valley Library	3
SPL in the Village	72
Wilhoit Public Library	27
Yarnell Public Library	32
Yavapai College - Prescott	59
Yavapai College - Verde	10

# STATISTICS - PHONE NOTICES

Date	Sent	Opt-Out	Successful	Failed	Clicks	Opens
1st Overdue						
5/1/2023	2	0	1	1	0	0
5/2/2023	13	0	13	0	0	0
5/3/2023	17	0	17	0	0	0
5/4/2023	15	0	12	3	0	0
5/5/2023	22	0	20	2	0	0
5/6/2023	21	0	20	1	0	0
5/7/2023	21	0	21	0	0	0
5/8/2023	1	0	1	0	0	0
5/9/2023	17	0	17	0	0	0
5/10/2023	20	0	18	2	0	0
5/11/2023	18	0	18	0	0	0
5/12/2023	19	0	16	3	0	0
5/13/2023	19	0	18	1	0	0
5/14/2023	12	0	11	1	0	0
5/15/2023	4	0	3	1	0	0
5/16/2023	18	0	16	2	0	0
5/17/2023	16	0	14	2	0	0
5/18/2023	26	0	25	1	0	0
5/19/2023	20	0	20	0	0	0
5/20/2023	16	0	16	0	0	0
5/21/2023	12	0	8	4	0	0
5/23/2023	22	0	22	0	0	0
5/24/2023	19	0	18	1	0	0
5/25/2023	11	0	8	3	0	0
5/26/2023	17	0	13	4	0	0
5/27/2023	12	0	10	2	0	0
5/28/2023	15	0	12	3	0	0
5/29/2023	6	0	6	0	0	0
5/30/2023	10	0	10	0	0	0
5/31/2023	23	0	22	1	0	0
<b>Total</b>	<b>464</b>	<b>0</b>	<b>426</b>	<b>38</b>	<b>0</b>	<b>0</b>
Final Overdue						
5/1/2023	5	0	5	0	0	0
5/2/2023	4	0	4	0	0	0
5/3/2023	8	0	7	1	0	0



# STATISTICS - PHONE NOTICES

5/4/2023	7	0	5	2	0	0
5/5/2023	1	0	1	0	0	0
5/6/2023	5	0	5	0	0	0
5/7/2023	2	0	2	0	0	0
5/8/2023	3	0	3	0	0	0
5/9/2023	5	0	5	0	0	0
5/10/2023	4	0	4	0	0	0
5/11/2023	6	0	5	1	0	0
5/12/2023	7	0	7	0	0	0
5/13/2023	7	0	6	1	0	0
5/15/2023	6	0	6	0	0	0
5/16/2023	1	0	1	0	0	0
5/17/2023	5	0	3	2	0	0
5/18/2023	7	0	6	1	0	0
5/19/2023	7	0	7	0	0	0
5/20/2023	5	0	5	0	0	0
5/22/2023	7	0	7	0	0	0
5/23/2023	10	0	8	2	0	0
5/24/2023	5	0	4	1	0	0
5/25/2023	7	0	5	2	0	0
5/26/2023	9	0	8	1	0	0
5/27/2023	7	0	6	1	0	0
5/28/2023	2	0	1	1	0	0
5/29/2023	3	0	3	0	0	0
5/30/2023	5	0	5	0	0	0
5/31/2023	9	0	9	0	0	0
<b>Total</b>	<b>159</b>	<b>0</b>	<b>143</b>	<b>16</b>	<b>0</b>	<b>0</b>
<b>Hold Pickup</b>						
5/1/2023	4	0	4	0	0	0
5/2/2023	27	0	23	4	0	0
5/3/2023	69	0	64	4	0	0
5/4/2023	51	0	49	2	0	0
5/5/2023	58	0	54	3	0	0
5/6/2023	43	0	41	2	0	0
5/7/2023	16	0	14	2	0	0
5/8/2023	4	0	3	1	0	0
5/9/2023	43	0	42	1	0	0
5/10/2023	71	0	67	4	0	0
5/11/2023	51	0	48	3	0	0
5/12/2023	51	0	51	0	0	0
5/13/2023	48	0	45	3	0	0
5/14/2023	7	0	7	0	0	0

# STATISTICS - PHONE NOTICES

5/15/2023	3	0	3	0	0	0
5/16/2023	32	0	31	1	0	0
5/17/2023	61	0	59	2	0	0
5/18/2023	54	0	53	1	0	0
5/19/2023	46	0	42	4	0	0
5/20/2023	63	0	58	5	0	0
5/21/2023	18	0	17	1	0	0
5/22/2023	6	0	6	0	0	0
5/23/2023	36	0	33	3	0	0
5/24/2023	59	0	55	4	0	0
5/25/2023	64	0	57	7	0	0
5/26/2023	53	0	52	1	0	0
5/27/2023	47	0	46	1	0	0
5/28/2023	19	0	18	1	0	0
5/29/2023	9	0	9	0	0	0
5/30/2023	1	0	1	0	0	0
5/31/2023	52	0	50	2	0	0
<b>Total</b>	<b>1166</b>	<b>0</b>	<b>1102</b>	<b>62</b>	<b>0</b>	<b>0</b>
<b>Grand Total</b>	<b>1789</b>	<b>0</b>	<b>1671</b>	<b>116</b>	<b>0</b>	<b>0</b>