

Yavapai  
Library  
Network  
Monthly Report



November  
2023

# MANAGER'S LOWDOWN

Greetings!

The YLN Annual Report for FY22-23 can be found in the YLN portal: <https://www.yln.info/yn-annual-reports>.

## Koha Migration

ByWater is finalizing the project plan for our migration to Koha. The first step will be the process scoping, which will be conducted by their COO and involve our Implementation Team. The official Kickoff Meeting is tentatively scheduled for the second week of January, and all are welcome to attend! It will be virtual and I will send out more information when I receive it.

## Authority Control

As I'm sure most of you are aware, we are in the process of having our catalog database cleaned up and standardized (i.e. the reason that most cataloging has stopped until December 18th!). Marcive is in the midst of processing our bibliographical and authority records. We received an LSTA grant for this project which will greatly enhance our catalog and help our patrons in finding information. This project is supported by the Arizona State Library, Archives & Public Records, a division of the Secretary of State, with federal funds from the Institute of Museum and Library Services.

Some of the enhancements that the public might notice are:

- addition of subject headings to older incomplete records
- addition of tables of contents
- addition of reading levels
- standardized subject headings. For example, instead of having several identical-to-the-eye "Romance fiction" subjects to click on, there should just be one.

Some of the enhancements library staff (most particularly catalogers) will notice are:

- standardized relator codes
- GSAFD -> LCGFT genre subject headings
- normalized LCCN, ISBN, and ISSN fields
- updated obsolete MARC coding to current standards (language, geographic codes, etc.)
- corrected filing indicators
- RDA conversion and enhancement
- deletion of junk headings (FAST, MeSH, BISAC, etc.)

Marcive will complete the bibliographic record processing

next week, then will send us back our updated records. Our old authority file in Symphony will be deleted, and a new authority file (also from Marcive) will be loaded. The new authority file will match Library of Congress authority records. Chanel will load the new files on Sunday, December 17th, at which time WorkFlows will be unavailable. On December 18th, everything should be back up and cataloging can resume. If the dates change, we will notify you as soon as possible.

Happy holidays!  
Karie

## **Yavapai College - Prescott**

Spanish Cafe on November 15 & December 6 from noon - 1pm in the Magazine and Newspaper Area

# PRIORITIES

## Help Desk

A help desk request, or work order, is the submission of a problem that one encounters during the normal operation of a YLN service. Requests are generally submitted via e-mail to [help@yln.info](mailto:help@yln.info). If a request is submitted via telephone, then a YLN staff person will create the request for the submitter. Help desk requests will always be our highest priority because in some cases a member library employee cannot complete a work function until the issue is resolved.

**Total requests submitted: 55**

**Total requests resolved: 47**

**Total unresolved requests opened this month: 8**

**Total requests still open: 23**



# STATISTICS: HOLDS

HOLDS - November 2023					
Hold Inactive Reason	CANCELLED	EXP_ONSHLF	EXPIRED	FILLED	Total
Pickup Library	Number of Holds	Number of Holds	Number of Holds	Number of Holds	Number of Holds
AJS	1	4		26	31
ASH	8	17		276	301
BAG	6	35		56	97
BCC	52	11		332	395
BEA	30	26		308	364
BMHS	1	1		12	14
BMMS				6	6
CJES	3	1		2	6
CLA	9	6	1	132	148
CON	36	13		265	314
COR	22	14		235	271
CRK	2	2		46	50
CSES				13	13
CTW	205	203	18	2,492	2,918
CVCL	96	62	3	1,056	1,217
CVHS	1				1
CVLAB				5	5
CVPL	141	62		1,231	1,434
CVUSD		4		5	9
DEL	2	2		9	13
DHL	11	13	1	237	262
ERU	16	7		134	157
GES				5	5
GMMS				2	2
HES	1	5		13	19
HMS	2				2
JER	1	1		22	24
LES				11	11
MAY	21	25		217	263
MES	1			14	15
MUHS	2			1	3
PAUL	34	35		407	476
PCL	2	2		21	25
PCM				3	3
PHS				1	1
PPL	1,226	773	29	8,509	10,537
PVA2	257	68	5	880	1,210
PVPL	540	298	6	4,443	5,287
SED	277	171	10	2,248	2,706
SEL	26	18		237	281
SPR	25	12	7	260	304

# STATISTICS: HOLDS

Hold Inactive Reason	CANCELLED	EXP_ONSHLF	EXPIRED	FILLED	Total
Pickup Library	Number of Holds	Number of Holds	Number of Holds	Number of Holds	Number of Holds
STX	1				1
THS	1				1
VOC	132	73	3	1,206	1,414
WIL	17	12	2	263	294
YAR	25	14		346	385
YCFLD	7			39	46
YCP	116	35	2	120	273
YCP2				1	1
YCV	5	1		50	56
YCV2	1		1	12	14
YLN	8			4	12
<b>Total</b>	<b>3,370</b>	<b>2,026</b>	<b>88</b>	<b>26,213</b>	<b>31,697</b>

# STATISTICS: TRANSITS

## ITEMS TRANSITED - NOVEMBER 2023

Station Library	Total	AJS	ASH	BAG	BCC	BEA	BMHS	BMMS	CJES	CLA	CON	COR	CRK	CSES	CTW	CVCL
Total	19,721	34	273	68	277	282	17	9	6	127	252	219	49	13	2,010	1,002
AFSD	5															
AJS	40					1				1		1			7	1
ASH	184				3	4					2	1			15	7
BAG	354	2	6		3	2				1	2	9	2		22	17
BCC	313		6			10				4	4	3			32	14
BEA	199		4	4	2				1	1	2	2		2	23	8
BMHS	29		1								1				4	3
BMMS	23			1		1	2			1					3	
CJES	6															
CLA	236		6		5	5					3	3		1	20	13
CON	126		5	1	4	1						3	2		7	7
COR	283		8	3	6	6				4	4		2		26	16
CRK	83		1		1	3					2	2			7	1
CSES	12	1		2											1	1
CTW	2,340	3	29	5	51	17	4	1		16	21	16	1	1		122
CVCL	681	1	13	8	12	9	1			1	5	4	1	1	72	
CVHS	46		1		1							1			6	1
CVLAB	21														1	
CVPL	1,201	4	16	3	21	12	3			9	11	8	2	2	140	70
CVUSD	69			1							2				7	5
DEL	5															
DHL	155		4	2	1	4				1		2	1		16	8
ERU	159	1	1		3	1					1	2			8	5
GES	49	2				3		2							5	4
GHMS	6														1	
GMMS	21			1							3				3	2
HMS	18				1							2			3	
JER	196		1			3					2				20	6
LES	36		1		1										3	2
LTS	20										1				4	
LVES	12				1										4	
MAY	311		4	1	12	7				1	7	6	1		28	19
MES	23														1	2
MUHS	38				1										1	2
MVES	23											2			2	
ORME	20														2	
PAUL	140	1	2		4	3						3	1		17	6
PCL	215			1	3	6				1	2	1			21	7
PHS	52				1						1				8	5
PMH	17														1	1
PPL	4,744	11	81	12	66	92	4	2	1	33	104	49	19		725	299
PVCV	1															
PVPL	2,361	7	32	9	28	35	2	1	3	22	38	33	11	3	232	135
SED	2,556	1	23	8	18	31	1	3	1	15	14	32	3	2	302	110
SEL	196		4		4	3				1	1	8			13	6
SPR	187		4		5	1						5			19	9
STX	61											2			4	6
SUSD	1															
SVES	12														1	1
TCP	7					1									1	
THS	26					1									1	1
VOC	375		5	2	3	3				3	2	4	2	1	34	16
WIL	140		2	1	1	2				2		1			14	8
YAR	357		4	2	5	6				4	12	9	1		33	20
YCFLD	1				1											
YCP	856		7		8	9				5	4	5			86	32
YCV	69		2		1					1	1				4	2
YLN	4			1												2

November 2023

# STATISTICS: TRANSITS

## ITEMS TRANSITED - NOVEMBER 2023

Station Library																		
Item Library	CVLAB	CVPL	CVUSD	DEL	DHL	ERU	GES	GMMS	HES	HMS	JER	LES	LTS	MAY	MES	MUHS	MVES	PAUL
Total	8	1,034	11	13	221	138	5	2	19	2	22	9	1	190	14	1	1	371
AFSD																		
AJS		3																1
ASH		8			1									2				10
BAG		19			2		1				1			1				14
BCC		18			3				1			1		1				10
BEA		10			1	1	1											6
BMHS		4																
BMMS		2																1
CJES								1										2
CLA		8			7	4								1				23
CON		13			4									3				3
COR		15			4	1			1		1			3	2			14
CRK		11			3	1								1				2
CSES		2					1											
CTW		137		1	30	11		1	3		6	2		19	1			30
CVCL		44			7	7			1					8				25
CVHS		3																
CVLAB		3	3		3				1									1
CVPL				1	7	6	1				1	1		6		1		16
CVUSD	2	12					1											2
DEL		1								1								
DHL		3				1								2				8
ERU		6			7									1				4
GES		1																
GHMS		1																
GMMS		1												2				
HMS		1																
JER		1			5									2				2
LES		1			2													
LTS		5																
LVES																		
MAY		9			4	4												16
MES		3			2							1						1
MUHS						3												1
MVES		3																3
ORME		1				1												
PAUL		4	1			2								1				
PCL		6												1				2
PHS		1		1					1		1							
PMH										1			1				1	
PPL		343	2	3	63	39			2		8	2		58	6			67
PVCV															1			
PVPL	2	148	2	3	22	22			5			2		35	3			39
SED		95	2	1	20	18			2		1			13				25
SEL		4			6	2								3				7
SPR		5				1								5				8
STX		3				1			1					2				
SUSD																		
SVES		1																
TCP		2																
THS		3	1	1														
VOC		6			6	1			1									2
WIL		5			2	5								1				4
YAR		18		2	4									8	1			7
YCFLD																		
YCP	4	36			5	6					3			11				15
YCV		5			1	1												
YLN																		



# STATISTICS: TRANSITS

## ITEMS TRANSITED - NOVEMBER 2023

Station Library																
Item Library	PCL	PHS	PPL	PVA2	PVPL	SED	SEL	SPR	STX	VOC	WIL	YAR	YCFLD	YCP	YCV	YLN
Total	20	1	4,904	96	4,011	1,496	196	288	12	1,158	264	325	7	143	63	37
AFSD					4					1						
AJS			7	2	12	1	2									1
ASH			47	1	40	14		8		7	4	1		7		2
BAG			111	1	97	16	2	11		1	3	5	1	1	1	
BCC			84	1	50	24	3	9	2	14	3	3	1	3	2	7
BEA			57	3	29	20		2		5	4	4		1	1	5
BMHS			10		3			2						1		
BMMS			9		1			1								1
CJES			1					1				1				
CLA			27		52	18	1	3		13	10	7			1	5
CON			30		22	3		4		3	7			1		3
COR	1		63	2	47	13	7	11		11	5	6		1		
CRK			17		15	7	3	2		1		2			1	
CSES			1		3											
CTW	2		836	7	596	153	17	16		110	23	35	2	13	1	1
CVCL	1		201	4	152	51	4	8		29	7	3			1	
CVHS			13	1	11	4		1		2				1		
CVLAB			4		2	2		1								
CVPL			417	3	246	77	14	9		49	15	21		5	4	
CVUSD			15	1	11	4	2			2		1		1		
DEL			1										2			
DHL			39	2	30	10	4	5	1	2	3	1		3		2
ERU			66		24	11	3	2		9		1		3		
GES			19		13											
GHMS			2		2											
GMMS			3		3	3										
HMS			6		3	2										
JER			56	2	50	31	1	2		5	4	2		1		
LES			5	1	15	1	1	1		1		1				
LTS			7			1				1	1					
LVES			5		1	1										
MAY			73	1	60	17	3	14		10	5	6		2		1
MES			4		6	2		1								
MUHS			18		6	5		1								
MVES			5		7					1						
ORME			7		9											
PAUL	1		31		36	14		7		2	2	2				
PCL			64	1	40	40		5		11		1		1	1	
PHS			15		8	7		1			1	1				
PMH			5	1	3	2				1						
PPL	7	1		18	1,335	512	67	68	5	362	90	119	1	56	11	1
PVCV																
PVPL	5		1,013	26		169	29	32	1	113	37	39		16	7	
SED	2		844	7	514		19	18	1	331	20	38		15	4	2
SEL			60		54	9		5		1	2	2		1		
SPR			55	4	42	12	2			5	2	1		1	1	
STX	1		19		15	4				1	2					
SUSD			1													
SVES			4		1	2				2						
TCP					1	1				1						
THS			6		8							4				
VOC			90		53	124		3			5	5		4		
WIL			31		33	10	3	2		4		5				4
YAR			84	2	75	14	9	12	1	15	6				1	2
YCFLD																
YCP			288	4	162	79		19	1	31	2	8			26	
YCV			28	1	9	5		1		1	1			5		
YLN						1										

November 2023

# STATISTICS: DISCARDED & ADDED

DISCARDS - NOVEMBER 2023	
Station Library	Library Use Transactions
AJS	26
ASH	1
BAG	202
BCC	3
BEA	35
BMHS	5
BMMS	1
CJES	120
CLA	145
CON	1
COR	61
CRK	1
CSES	2
CTW	120
CVCL	225
CVHS	114
CVLAB	3
CVPL	11
CVUSD	2,479
DEL	15
DHL	1
ERU	81
GES	6
HES	602
HMS	3
LES	22
LTS	1
MAY	5
MES	3
MUHS	1
PAUL	7
PCL	273
PHS	112
PPL	1,056
PVPL	128
SED	964
SEL	1
SUSD	93
SVES	19
THS	18
VOC	6
WIL	29
YCFLD	9
YCP	31
YCV	6
YLN	731
<b>Total</b>	<b>7,778</b>

ITEMS ADDED - NOVEMBER 2023	
Item Library	Total Copies
AFSD	45
AJS	65
ASH	31
BAG	69
BCC	54
BEA	60
BMHS	67
BMMS	2
CANON	115
CJES	47
CLA	27
CON	27
COR	45
CRK	7
CSES	68
CTW	274
CVCL	226
CVHS	13
CVLAB	7
CVPL	149
CVUSD	13
DEL	22
DHL	16
ERU	65
GES	7
GHMS	6
GMMS	43
HES	17
HMS	7
JER	6
LES	56
LTS	13
LVES	11
MAY	2
MES	62
MUHS	4
MVES	11
ORME	4
PAUL	11
PCL	18
PHS	38
PPL	993
PVPL	478
SED	376
SEL	117
SPR	24
SUSD	17
SVES	5
TCP	1
THS	50
VOC	63
WIL	16
YAR	36
YCP	27
YCV	11
YLN	6
<b>Grand Total</b>	<b>4050</b>

TOTAL ITEMS - NOVEMBER 2023	
Item Library	Total Copies
AFSD	4,357
AJS	13,982
ASH	5,451
BAG	15,684
BCC	11,763
BEA	11,091
BMHS	30,349
BMMS	7,966
CANON	4,096
CJES	11,135
CLA	8,739
CON	6,479
COR	6,490
CRK	3,403
CSES	4,643
CTW	85,278
CVCL	28,086
CVHS	15,827
CVLAB	4,181
CVPL	53,718
CVUSD	12,397
DEL	10,671
DHL	5,960
ERU	24,649
GES	12,398
GHMS	9,783
GMMS	9,576
HES	8,143
HMS	20,440
JER	14,256
LAW	1,784
LES	12,699
LTS	14,008
LVES	8,495
MAY	10,606
MES	5,153
MUHS	5,533
MVES	10,023
ORME	8,419
PAUL	7,389
PCL	33,956
PHS	11,311
PMH	9,286
PPL	128,622
PVCV	4,613
PVPL	88,066
SED	59,692
SEL	7,072
SHM	8,056
SPR	5,336
STX	828
SUSD	6,837
SVES	6,541
TCP	1,230
THS	11,136
VOC	4,773
VVAC	3,076
WIL	5,397
YAR	10,026
YAV	4,202
YCC	2,156
YCFLD	73
YCP	57,003
YCV	2,544
YLN	11
<b>Total</b>	<b>1,016,943</b>

# STATISTICS: USERS

## NEW USERS - NOVEMBER 2023

User Library	Number of Users
AFSD	8
AJS	2
ASH	7
BAG	4
BCC	19
BEA	9
BMHS	3
BMMS	2
CJES	2
CLA	1
CON	10
COR	9
CRK	1
CSES	20
CTW	141
CVCL	86
CVHS	4
CVPL	59
CVUSD	5
DEL	2
DHL	12
ERU	6
GES	4
GMMS	2
HES	3
HMS	5
LES	9
LTS	4
LVES	8
MAY	4
MES	22
MUHS	4
MVES	3
ORME	2
PAUL	11
PCL	1
PHS	3
PMH	5
PPL	266
PVPL	169
SED	85
SEL	2
SPR	3
SUSD	1
VOC	17
WIL	5
YAR	4
YCP	13
YCV	1
<b>Grand Total</b>	<b>1068</b>

## TOTAL USERS - NOVEMBER 2023

User Library	Number of Users
AFSD	430
AJS	985
ASH	808
BAG	673
BCC	873
BEA	1,240
BMHS	3,041
BMMS	544
CANON	137
CJES	747
CLA	530
CON	603
COR	963
CRK	143
CSES	988
CTW	10,364
CVCL	4,656
CVHS	1,438
CVLAB	25
CVPL	5,158
CVUSD	2,438
DEL	580
DHL	551
ERU	6,894
GES	835
GHMS	697
GMMS	685
HES	538
HMS	611
JER	192
LAW	1
LES	635
LTS	1,304
LVES	682
MAY	760
MES	1,108
MUHS	1,784
MVES	609
ORME	340
PAUL	783
PCL	4,042
PHS	2,067
PMH	979
PPL	25,970
PVA2	1
PVCV	18
PVPL	17,613
SED	8,315
SEL	639
SHM	2
SPR	581
SUSD	269
SVES	64
TCP	17
TECC	1
THS	764
VOC	1,578
WIL	211
YAR	551
YAV	1

YCC	1
YCFLD	11
YCP	1,289
YCV	701
YLN	20
<b>Total</b>	<b>122,078</b>

# STATISTICS: BILLS

PATRON BILLS - November 2023			
Bill Library Code	# of Bills	Bill Amount	Bill Payment Amount
Total	184	\$6,270.98	\$6,268.28
BEA	3	\$41.94	\$41.94
CTW	13	\$87.99	\$87.99
CVCL	4	\$86.03	\$86.03
CVLAB	2	\$15.00	\$15.00
CVPL	14	\$59.30	\$59.30
CVUSD	6	\$56.00	\$56.00
DEL	1	\$9.99	\$9.99
ERU	10	\$4,555.73	\$4,555.73
GES	1	\$18.99	\$18.99
MUHS	19	\$48.00	\$45.30
PAUL	2	\$50.00	\$50.00
PPL	30	\$371.99	\$371.99
PVPL	61	\$725.02	\$725.02
SED	12	\$93.00	\$93.00
SEL	2	\$15.00	\$15.00
THS	1	\$0.00	\$0.00
VOC	1	\$3.00	\$3.00
YCFLD	1	\$27.00	\$27.00
YCP	1	\$7.00	\$7.00



# STATISTICS: CIRCULATION

## CIRCULATION - NOVEMBER 2023

Station Library	Client Types	Charge Item Part B	Renew Item	Grand Total
AFSD	WorkFlows	51		51
AFSD Total		51		51
AJS	None	2		2
	WorkFlows	907	112	1019
	Aspen		2	2
AJS Total		909	114	1023
ASH	None	3		3
	SIP	680	1	681
	WorkFlows	27	244	271
	Aspen		6	6
ASH Total		710	251	961
BAG	None	12		12
	SIP	230	15	245
	WorkFlows	101	444	545
BAG Total		343	459	802
BCC	None	1		1
	SIP	636	1	637
	WorkFlows	124	321	445
BCC Total		761	322	1083
BEA	None	69		69
	WorkFlows	1126	564	1690
	Aspen		12	12
BEA Total		1195	576	1771
BMHS	WorkFlows	44	87	131
BMHS Total		44	87	131
BMMS	WorkFlows	130	28	158
	Aspen		3	3
BMMS Total		130	31	161
CJES	None	3		3
	WorkFlows	1045	247	1292
CJES Total		1048	247	1295
CLA	None	5		5
	SIP	190	1	191
	WorkFlows	40	114	154
CLA Total		235	115	350
CON	None	4		4
	SIP	628	1	629
	WorkFlows	94	184	278
	Aspen		16	16
CON Total		726	201	927
COR	None	9		9
	SIP	355		355
	WorkFlows	218	399	617
	Aspen		2	2
COR Total		582	401	983
CRK	None	77		77
	WorkFlows	222	98	320
	Aspen		3	3
CRK Total		299	101	400
CSES	WorkFlows	429	5	434
CSES Total		429	5	434
CTW	None	100		100
	SIP	8595	326	8921
	WorkFlows	277	4122	4399
	Aspen		367	367
CTW Total		8972	4815	13787

CVCL	None	23		23
	SIP	2273	24	2297
	WorkFlows	1287	1613	2900
	Aspen		194	194
CVCL Total		3583	1831	5414
CVHS	WorkFlows	152	4	156
	Aspen		12	12
CVHS Total		152	16	168
CVLAB	WorkFlows	697	12	709
	Aspen		1	1
CVLAB Total		697	13	710
CVPL	None	33		33
	SIP	1504	17	1521
	WorkFlows	2750	2422	5172
	Aspen		103	103
CVPL Total		4287	2542	6829
CVUSD	None	1		1
	SIP	323	8	331
	WorkFlows	61	119	180
CVUSD Total		385	127	512
DEL	WorkFlows	1449	247	1696
DEL Total		1449	247	1696
DHL	None	11		11
	WorkFlows	455	234	689
	Aspen		2	2
DHL Total		466	236	702
ERU	None	3		3
	SIP	110	6	116
	WorkFlows	2496	234	2730
	Aspen		8	8
ERU Total		2609	248	2857
GES	WorkFlows	950	116	1066
GES Total		950	116	1066
GHMS	WorkFlows	21		21
GHMS Total		21		21
GMMS	WorkFlows	245	92	337
GMMS Total		245	92	337
HES	WorkFlows	498	38	536
HES Total		498	38	536
HMS	WorkFlows	143	63	206
HMS Total		143	63	206
JER	WorkFlows	50	76	126
	Aspen		6	6
JER Total		50	82	132
LES	WorkFlows	1415	1040	2455
LES Total		1415	1040	2455
LTS	WorkFlows	1045	105	1150
LTS Total		1045	105	1150
LVES	WorkFlows	686	42	728
LVES Total		686	42	728
MAY	None	6		6
	SIP	419	4	423
	WorkFlows	136	315	451
MAY Total		561	319	880
MES	WorkFlows	1047	107	1154
MES Total		1047	107	1154
MUHS	WorkFlows	43	78	121
MUHS Total		43	78	121
MVES	WorkFlows	846	151	997
MVES Total		846	151	997
ORME	None	1		1

# STATISTICS: CIRCULATION

ORME Total		1		1
PAUL	None	10		10
	WorkFlows	884	337	1221
PAUL Total		894	337	1231
PCL	WorkFlows	102	80	182
	Aspen		3	3
PCL Total		102	83	185
PHS	WorkFlows	17	4	21
PHS Total		17	4	21
PMH	WorkFlows	190	175	365
	Aspen		4	4
PMH Total		190	179	369
PPL	None	1018		1018
	SIP	20253	915	21168
	WorkFlows	8974	13742	22716
	Aspen		1896	1896
PPL Total		30245	16553	46798
PVA2	None	54		54
	WorkFlows	9	1	10
PVA2 Total		63	1	64
PVPL	None	318		318
	SIP	15821	542	16363
	WorkFlows	115	8966	9081
	Aspen		1213	1213
PVPL Total		16254	10721	26975
SED	None	129		129
	SIP	6467	56	6523
	WorkFlows	574	2928	3502
	Aspen		789	789
SED Total		7170	3773	10943
SEL	None	1		1
	WorkFlows	1088	243	1331
SEL Total		1089	243	1332
SPR	SIP	101	7	108
	WorkFlows	388	69	457
SPR Total		489	76	565
STX	WorkFlows	12		12
STX Total		12		12
SUSD	WorkFlows	11		11
SUSD Total		11		11
SVES	WorkFlows	33	1	34
SVES Total		33	1	34
TCP	WorkFlows	1		1
TCP Total		1		1
THS	WorkFlows	1130	30	1160
THS Total		1130	30	1160
VOC	None	37		37
	SIP	1815	15	1830
	WorkFlows	123	574	697
VOC Total		1975	589	2564
WIL	None	2		2
	SIP	487		487
	WorkFlows	14	134	148
	Aspen		3	3
WIL Total		503	137	640
YAR	None	6		6
	SIP	483		483
	WorkFlows	420	236	656
YAR Total		909	236	1145
YCFLD	WorkFlows	6	13	19
	Aspen		241	241

YCFLD Total		6	254	260
YCP	None	3		3
	SIP	365	26	391
	WorkFlows	40	333	373
	Aspen		27	27
YCP Total		408	386	794
YCV	SIP	21		21
	WorkFlows	89	101	190
YCV Total		110	101	211
YLN	WorkFlows	37		37
	Aspen		443	443
YLN Total		37	443	480
Grand Total		99261	49365	148626

CIRCULATION USE ITEM - NOVEMBER 2023	
Station Library	Use Item Transactions
CTW	367
CVUSD	292
ERU	1
PCL	3
SED	96
SPR	334
VOC	6
YCP	87

# STATISTICS: CHECKINS

CHECKINS - NOVEMBER 2023	
Station Library	Total Checkins
AFSD	48
AJS	901
ASH	789
BAG	410
BCC	949
BEA	1,673
BMHS	146
BMMS	164
CANON	817
CJES	1,531
CLA	240
CON	815
COR	800
CRK	245
CSES	336
CTW	10,563
CVCL	3,837
CVHS	359
CVLAB	756
CVPL	4,705
CVUSD	4,337
DEL	1,475
DHL	591
ERU	3,285
GES	1,142
GHMS	34
GMMS	311
HES	574
HMS	320
JER	114
LES	1,426
LTS	1,135
LVES	658
MAY	616
MES	971
MUHS	76
MVES	797
ORME	1
PAUL	1,126
PCL	66
PHS	19
PMH	177
PPL	33,159
PVA2	2
PVPL	17,662
SED	7,708
SEL	1,112
SPR	499
SUSD	4
SVES	160
THS	1,168
VOC	2,111

WIL	520
YAR	996
YCFLD	50
YCP	839
YCV	194
YLN	197
Total	115,716

# STATISTICS: OPAC

<b>Library</b>	<b>Total</b>
Default	17,139
CTW	10,782
CVCL	5,069
CVPL	2,640
Elementary	3,267
ERU	1,769
High	1501
JER	90
Middle	680
PCL	676
PPL	49,210
PVPL	30,020
SED	26,186
YCFLD	7,712
YCP	12,875



# STATISTICS: OVERDRIVE

<b>USAGE TYPE: ALL DOCUMENTS</b>			
<b>USER ACTIVITY</b>			
<b>UNIQUE USERS: 6126</b>			
<b>CHECKOUTS</b>		<b>HOLDS</b>	
Audiobook	12000	Audiobook	4610
eBook	12020	eBook	4650
Magazine	6389		

<b>BRANCH</b>	<b>CHECKOUTS</b>
YLN-Prescott	12641
YLN-Prescott Valley	5681
YLN-Cottonwood	3094
YLN-Sedona	2328
YLN-Chino Valley	1124
YLN-Camp Verde	1110
YLN-Sedona - Village of Oak Creek	794
YLN-Yavapai College	466
YLN-Clark Memorial	283
YLN-Beaver Creek	249
YLN-Dewey-Humboldt Town	223
YLN-Congress	207
YLN-Mayer	165
YLN-Black Canyon City	136
YLN-Paulden	133
YLN-Yarnell	128
YLN-Embry-Riddle	123
YLN-Seligman	118
YLN-Bagdad	107
YLN-Cordes Lakes	53
YLN-Ash Fork	48
YLN-Jerome	42
YLN-Yavapai Schools	34
YLN-Wilhoit	26
YLN-Prescott College	18
YLN-Spring Valley	16
YLN-Crown King	15

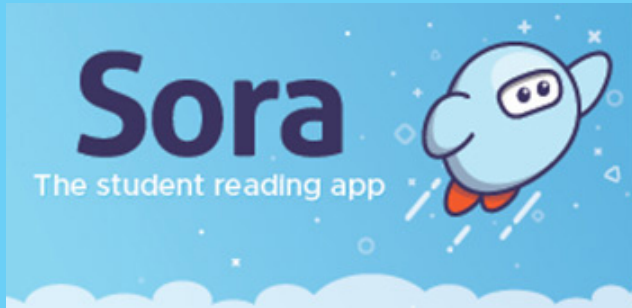
# STATISTICS: OVERDRIVE RLA

CONSORTIUM	Total	audiobook	ebook	videos
Amphitheater Public Schools	3	1	2	0
Apache County Library District	33	19	14	0
Cochise County Library District	121	70	51	0
Flagstaff City-Coconino County Public Library	138	76	62	0
Gila County Library District	34	25	9	0
Little Libraries That Could	19	11	8	0
Navajo County Library District	70	56	14	0
Pima County Public Library	413	231	182	0
Southwest Valley Library Consortium	39	28	11	0
Tempe Public Library	95	44	51	0
Yavapai School Library Collection	42	7	35	0
Yuma County Library District	44	28	16	0
<b>Grand Total</b>	<b>1254</b>	<b>666</b>	<b>576</b>	<b>0</b>

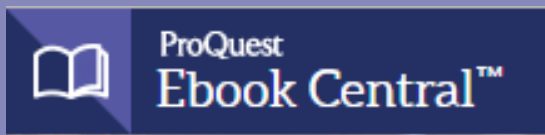
Yavapai Patron Checkouts from other RLA Systems: 3056



# STATISTICS: ONLINE USAGE



Books Opened	4149
Time Read (hours)	907.61
Avg Time per Book (min)	75.78
Avg Time per Session (min)	37.35
Avg Time per User (min)	34.47
Unique Users	470



Library	Total Titles Used	Total Unique Users	Total Book Downloads	Total Chapter Downloads	Top 5 Most Used Subjects
TOTAL	677	520	75	91	Social Science, Fine Arts, Education, Religion, History



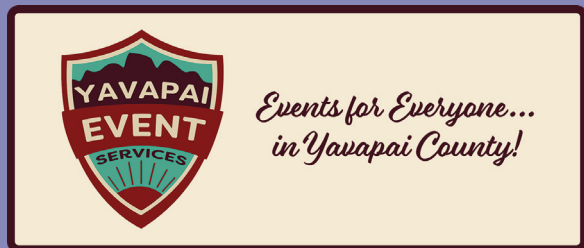
Logins	1352
Holds Placed	4846

(loginToLiDA/placeHold)

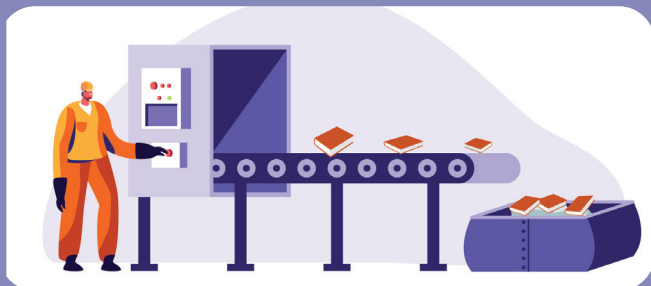
# STATISTICS: ONLINE USAGE



TOTAL SESSIONS	311
Mobile Sessions	100
Avg Learning Time (min)	14.37



Month	# Programs Happening	# of Users Visiting
November	540	1700



AMH Sorter [Ethel]	
Items/Month	52588



## SMS Notices

Hold Notice	4882
Manual Text	30
Overdue Notice	2786

Ash Fork Public Library	100
Bagdad Public Library	60
Black Canyon City Community Library	19
Beaver Creek Public/School Library	21
Clark Memorial Library	48
Congress Public Library	93
Cordes Lakes Public Library	67
Crown King Public Library	6
Cottonwood Public Library	756
Camp Verde Community Library	115
Chino Valley Public Library	176
Dewey-Humboldt Town Library	63
Embry-Riddle Aeronautical University Library	15
Jerome Public Library	9
Mayer Public Library	49
Paulden Public Library	61
Prescott Public Library	2293
Prescott Valley Public Library	866
Sedona Public Library	311
Seligman Public Library	4
Spring Valley Library	9
SPL in the Village	71
Wilhoit Public Library	21
Yarnell Public Library	49
Yavapai Free Library District	1
Yavapai College - Prescott	64
Yavapai College - Verde	3

# STATISTICS - PHONE NOTICES

Date	Sent	Opt-Out	Successful	Failed	Clicks	Opens
1st Overdue						
11/1/2023	21	0	19	2	0	0
11/2/2023	20	0	17	3	0	0
11/3/2023	19	0	19	0	0	0
11/4/2023	24	0	22	2	0	0
11/5/2023	11	0	10	1	0	0
11/6/2023	6	0	5	1	0	0
11/7/2023	12	0	11	1	0	0
11/8/2023	21	0	18	3	0	0
11/9/2023	18	0	16	2	0	0
11/10/2023	14	0	12	2	0	0
11/11/2023	10	0	9	1	0	0
11/12/2023	14	0	13	1	0	0
11/13/2023	14	0	12	2	0	0
11/14/2023	15	0	15	0	0	0
11/15/2023	19	0	18	1	0	0
11/16/2023	16	0	15	1	0	0
11/17/2023	19	0	18	1	0	0
11/18/2023	16	0	14	2	0	0
11/19/2023	16	0	16	0	0	0
11/20/2023	6	0	5	1	0	0
11/21/2023	9	0	9	0	0	0
11/22/2023	13	0	13	0	0	0
11/23/2023	11	0	10	1	0	0
11/24/2023	5	0	5	0	0	0
11/25/2023	3	0	3	0	0	0
11/26/2023	26	0	25	1	0	0
11/27/2023	5	0	5	0	0	0
11/28/2023	17	0	15	2	0	0
11/29/2023	21	0	21	0	0	0
11/30/2023	27	0	24	3	0	0
<b>Total</b>	<b>448</b>	<b>0</b>	<b>414</b>	<b>34</b>	<b>0</b>	<b>0</b>
Final Overdue						
11/1/2023	4	0	4	0	0	0
11/2/2023	1	0	1	0	0	0
11/3/2023	6	0	3	3	0	0



# STATISTICS - PHONE NOTICES

11/4/2023	3	0	3	0	0	0
11/5/2023	1	0	0	1	0	0
11/6/2023	6	0	6	0	0	0
11/7/2023	3	0	3	0	0	0
11/8/2023	9	0	9	0	0	0
11/9/2023	5	0	4	1	0	0
11/10/2023	5	0	4	1	0	0
11/11/2023	6	0	6	0	0	0
11/12/2023	1	0	1	0	0	0
11/13/2023	3	0	2	1	0	0
11/14/2023	6	0	4	2	0	0
11/15/2023	7	0	5	2	0	0
11/16/2023	7	0	7	0	0	0
11/17/2023	9	0	7	2	0	0
11/18/2023	1	0	1	0	0	0
11/19/2023	3	0	2	1	0	0
11/20/2023	3	0	3	0	0	0
11/21/2023	7	0	6	1	0	0
11/22/2023	7	0	6	1	0	0
11/23/2023	4	0	2	2	0	0
11/24/2023	2	0	1	1	0	0
11/25/2023	5	0	4	1	0	0
11/26/2023	4	0	3	1	0	0
11/27/2023	5	0	5	0	0	0
11/28/2023	5	0	4	1	0	0
11/29/2023	7	0	6	1	0	0
11/30/2023	6	0	5	1	0	0
<b>Total</b>	<b>141</b>	<b>0</b>	<b>117</b>	<b>24</b>	<b>0</b>	<b>0</b>
<b>Hold Pickup</b>						
11/1/2023	68	0	66	2	0	0
11/2/2023	63	0	63	0	0	0
11/3/2023	63	0	61	2	0	0
11/4/2023	42	0	39	3	0	0
11/5/2023	11	0	11	0	0	0
11/6/2023	2	0	2	0	0	0
11/7/2023	38	0	38	0	0	0
11/8/2023	71	0	67	4	0	0
11/9/2023	54	0	50	4	0	0
11/10/2023	45	0	43	2	0	0
11/11/2023	5	0	4	1	0	0
11/12/2023	13	0	13	0	0	0
11/13/2023	17	0	17	0	0	0

# STATISTICS - PHONE NOTICES

11/14/2023	42	0	42	0	0	0
11/15/2023	80	0	73	7	0	0
11/16/2023	65	0	61	4	0	0
11/17/2023	67	0	61	6	0	0
11/18/2023	51	0	48	3	0	0
11/19/2023	16	0	16	0	0	0
11/20/2023	8	0	8	0	0	0
11/21/2023	30	0	28	2	0	0
11/22/2023	42	0	38	3	0	0
11/23/2023	40	0	37	3	0	0
11/25/2023	1	0	1	0	0	0
11/26/2023	25	0	25	0	0	0
11/27/2023	6	0	6	0	0	0
11/28/2023	57	0	50	7	0	0
11/29/2023	72	0	70	2	0	0
11/30/2023	82	0	79	3	0	0
<b>Total</b>	<b>1176</b>	<b>0</b>	<b>1117</b>	<b>58</b>	<b>0</b>	<b>0</b>
<b>Grand Total</b>	<b>1765</b>	<b>0</b>	<b>1648</b>	<b>116</b>	<b>0</b>	<b>0</b>