

Yavapai Library Network Monthly Report



December 2025

Greetings,

Happy New Year! The month of December seemed to fly by, and now here we are stepping into 2026 together. I hope the season has treated you well. Below are a few updates and highlights within the network as we begin the new year.

Recent Highlights

- **Annual Report:** Due to the Library Network Administrator's vacancy and some necessary statistics reconciliation, the FY25 annual report was delayed, but it will be released within the next few days. I'll post the link to the digital version of the report when it's ready. If you would like a printed copy for your library, please let us know and we'll be happy to provide one.
- **Member Changes:** As of December 19, 2025, ERAU is no longer part of the network. We extend our sincere thanks to the public libraries that are willing to help ease the transition for ERAU faculty, staff, and students by accepting EAGLEcards as proof of residency through January 30, 2026. ERAU is exploring new ways to encourage public library card registration, including inviting public libraries to conduct annual outreach on their campus.
- **Bylaws Committee:** The Bylaws Committee held its first meeting on December 19, 2025, and began reviewing several sections in the Bylaws that need updates. This work will continue through March 2026, at which point recommendations for revisions will be presented to the Steering Committee.
- **New YLN Cataloger Update:** The search for a new Cataloger has concluded, and a candidate has been selected. Once the official paperwork is complete, we will share the announcement with the network. As noted previously, the new Cataloger will not have supervisory responsibilities but will chair the Cataloging User Group. Nam Nguyen will continue as Technical Services Manager for the YCFLD and will still catalog for the YLN. With this addition, we will have two professional catalogers and one copy cataloger on staff to better support the network's diverse cataloging needs.
- **Product Transition:** Due to recent changes in procurement guidelines and processes, the SkyRiver contract signing has been delayed until the first week of January 2026. We hope to move forward with implementation shortly thereafter. In the meantime, BTCat remains accessible but may cease operations at any time. Thanks to the MARC modification templates prepared by Karie, our systems librarian, we have a solid backup plan in place should any disruptions occur during the transition.

Technical Enhancements

Koha now includes a cron job that automatically updates missing items' status to "Lost" after one year.

During the ERAU exit process, we also discovered that Libby/OverDrive activities may be sufficient to keep library accounts active. This differs from Symphony Workflows, where patrons needed to check out or place a hold on a physical item every two years to maintain account activity. The best way to confirm this behavior is through patrons who use e-books exclusively. If you encounter any examples of e-book users who haven't had to update their accounts the past two years, please share them with us.

Looking Ahead

We are preparing to revive the RFID and AMH request for proposal (RFP), as our current contract with Tech Logic expires on June 30, 2026. The Steering Committee approved the use of procurement consultant services on November 17, 2025, and the Board of Supervisors approved the agreement on December 17. A recommended RFID committee has been identified, and information has been shared with the respective library directors. We anticipate holding the first meeting in early January 2026.

As we begin this new year, we're grateful for the strong relationships across our network. Your commitment makes our shared work possible, and we're excited for what we'll accomplish together in 2026.

Sincerely,

—Minh Nguyen

PRESCOTT PUBLIC LIBRARY

Join the Junior Juggling Squad!

Step right up and learn the art of amazing juggling! Join our new Junior Juggling Squad for kids ages 10–16, led by the awesome Mr. Frankie—an experienced performer and teacher with years of circus-style know-how. Each week, you'll build balance, confidence, coordination, and some seriously cool skills. Whether you're a total beginner or already tossing a few tricks, this club is your place to shine. Come juggle, laugh, and level up! Beginning January 2, the club meets weekly and attendees are expected to attend for the full 4 week session. Supplies provided* For more information and to register, please call the Youth Desk at 928.777.1537. [Click to Learn More and Register](#)



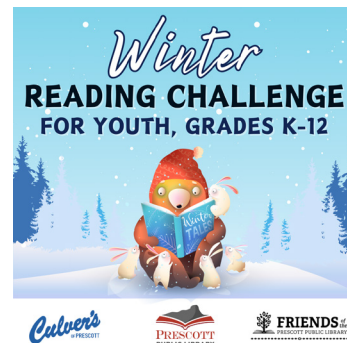
Winter Bingo Challenge for Adults and Teens

Warm up with the library during these chilly months and take part in a winter bingo challenge for adults and teens 13+. Between January 6 and February 28, earn a prize by completing a bingo with four fun library themed tasks in a row! To play, pick up a bingo sheet at the Ask a Librarian desk on the second floor of the library then return your completed sheet to a librarian by February 28. For more information, visit or call the Ask a Librarian desk at 928.777.1526.



Sweet Rewards for Youth in Winter Reading Challenge

Cozy up with good books this winter and earn sweet rewards! Youth in grades K-12 can pick up a Winter Reading Bookmark at the Youth Desk and get reading! Log the books you read from January 5 - February 28 to earn a free frozen custard and a free kid's meal courtesy of Culver's of Prescott. Program finishers also receive a free book! One bookmark per child, while supplies last. Must be redeemed at Culver's of Prescott. For more information, please call the Youth Desk at 928.777.1537. The Youth Winter Reading Challenge is presented with support from Culver's of Prescott and funding from the Friends of the Prescott Public Library.



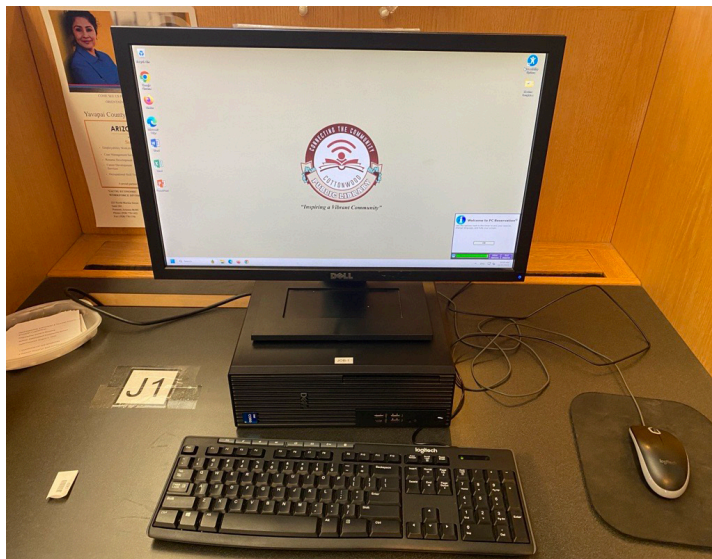
New Years Food Drive

Prescott Public Library is teaming up with Prescott Community Cupboard Food Bank to host a New Years Food Drive to combat food insecurity. Drop off your canned and dry food goods at the library during the month of January to help our local community. Items needed include canned soup, canned fruit & vegetables, canned meats & fish, canned pasta sauce, pasta, cereal bars, oatmeal, dried beans & rice, cereal, protein shakes, and baking items.



COTTONWOOD PUBLIC LIBRARY

The Cottonwood Public Library recently completed an upgrade of its public-use computers. This project updated a total of 25 computers, bringing all public machines onto Windows 11 and creating new learning opportunities for the community. Local Group Policies were implemented to enhance security and protect patron data. This much-needed upgrade has made the public-use computers faster, safer, and an overall better experience for users. Patrons are also encouraged to attend Tech Time, held Monday through Friday from 10:00 a.m. to 1:00 p.m., to learn how to navigate the new computers and stay up to date in the ever-changing world of technology.



BLACK CANYON CITY COMMUNITY LIBRARY



BLACK CANYON CITY COMMUNITY LIBRARY
MEDICARE 101
THURSDAY, JANUARY 22ND
5:30 PM

Black Canyon City Community Library
34701 S Old Black Canyon Highway Black Canyon City, AZ 853243
623-374-5866



YAVAPAI COUNTY LIBRARY DISTRICT

Introducing the Teen News & Media Literacy Pilot Program funded by the Carnegie Corporation of New York. Black Canyon City Community Library will be one of five libraries testing this program across the country! What happens? Workshops developed by Common Sense Education that bring media literacy to teenagers.

It's Giving A.I.

Learn how to use Artificial Intelligence responsibly and recognize AI-generated artwork.

Friday, January 16 | 2:30 PM
Ages 12-18
Register at yavapai.events

Snacks provided by Common Sense Media.

Help Desk

A help desk request, or work order, is the submission of a problem that one encounters during the normal operation of a YLN service. Requests are generally submitted via e-mail to help@yln.info. If a request is submitted via telephone, then a YLN staff person will create the request for the submitter. Help desk requests will always be our highest priority because in some cases a member library employee cannot complete a work function until the issue is resolved.

Total requests submitted: 69

Total requests resolved: 59

Total unresolved requests opened this month: 6

Total requests still open: 11



STATISTICS: HOLDS

HOLDS - DECEMBER 2025				
Pickup Library	Cancelled	Expired Onshelf	Filled	Total
AJS	3	0	5	8
ASH	8	1	85	94
BAG	1	0	55	56
BCC	45	1	367	413
BEA	9	1	199	209
BMHS	1	0	1	2
CJES	0	0	2	2
CLA	3	0	73	76
CON	13	0	196	209
COR	8	5	145	158
CRK	2	0	26	28
CTW	127	43	1,386	1,556
CVCL	68	13	482	563
CVLAB	2	0	1	3
CVPL	89	29	702	820
CVUSD	0	0	2	2
DHL	12	1	85	98
GES	1	0	8	9
JER	4	0	13	17
MAY	9	0	66	75
PAUL	64	6	218	288
PCL	1	0	10	11
PMH	1	0	0	1
PPL	666	260	5,106	6,032
PVA2	158	8	659	825
PVPL	405	142	2,709	3,256
SED	117	21	842	980
SEL	8	0	79	87
SPR	9	0	157	166
THS	0	0	2	2
VOC	75	9	558	642
WIL	21	0	200	221
YCFLD	5	0	28	33
YCV	1	0	15	16
YCV2	1	0	6	7
Total	1,937	540	14,488	16,965

STATISTICS: TRANSITS

ITEMS TRANSITED - DECEMBER 2025

CKO Lib → ↓ Item Lib	AFSD	AJS	ASH	BAG	BCC	BEA	BMHS	BMMS	BUSD	CANON	CJES	CLA	CON	COR	CRK
AJS	0	0	0	0	0	0	0	0	0	0	0	0	0	0	0
ASH	0	0	0	0	23	9	0	0	0	0	0	2	12	5	1
BAG	0	0	13	0	17	13	0	0	0	0	0	2	12	10	0
BCC	0	0	14	3	0	19	0	0	0	0	0	4	12	14	4
BEA	0	1	3	1	22	0	0	0	0	0	0	4	12	4	0
BMHS	0	0	0	0	2	1	0	0	0	0	0	0	0	0	0
BMMS	0	0	0	0	1	1	0	0	0	0	0	0	0	1	0
CANON	0	0	0	0	1	0	0	0	0	0	0	0	0	0	0
CJES	0	1	0	0	0	0	0	0	0	0	0	0	0	0	0
CLA	0	0	3	2	13	7	0	0	0	0	0	0	10	8	2
CON	0	0	3	0	18	10	0	0	0	0	0	2	0	8	3
COR	0	0	9	0	19	8	0	0	0	0	0	3	12	0	1
CRK	0	0	0	0	2	2	0	0	0	0	0	0	3	5	0
CSES	0	0	0	0	0	1	0	0	0	0	0	0	0	0	0
CTW	0	1	7	7	45	25	0	0	0	0	1	7	16	15	0
CVCL	0	0	2	3	12	12	0	0	0	0	1	2	4	2	2
CVHS	0	0	0	1	1	1	0	0	0	0	0	0	0	2	0
CVLAB	0	0	0	0	0	0	0	0	0	0	0	0	0	0	0
CVPL	0	4	7	0	29	10	0	0	0	0	0	2	6	9	0
CVUSD	0	0	0	0	1	1	0	0	0	0	1	0	0	0	0
DEL	0	0	0	0	0	0	0	0	0	0	0	0	0	1	0
DHL	0	1	2	1	8	9	0	0	0	0	0	3	9	3	5
ERAU	0	0	0	1	0	0	0	0	0	0	0	0	0	0	0
GES	0	0	0	0	1	0	0	0	0	0	0	0	0	0	0
GMMS	0	0	0	0	1	0	0	0	0	0	0	0	0	0	0
HES	0	1	0	0	0	0	0	0	0	0	1	0	0	0	0
HMS	0	1	0	0	1	1	0	0	0	0	0	0	0	0	0
JER	0	0	0	0	2	4	0	0	0	0	0	2	0	1	0
LES	0	0	0	0	0	0	0	0	0	0	0	0	0	0	0
LTS	0	0	0	2	2	0	0	0	0	0	0	0	0	0	0
MAY	0	0	7	1	17	14	0	0	0	0	0	5	10	13	2
MES	0	0	0	0	0	0	0	0	0	0	0	0	3	0	0
MUHS	0	0	0	0	0	0	0	0	0	0	0	0	0	2	0
MVES	0	0	0	0	0	0	0	0	0	0	0	0	0	0	0
PAUL	0	0	10	2	21	7	0	0	0	0	0	5	11	9	0
PCL	0	0	0	0	0	4	0	0	0	0	0	2	1	2	0
PHS	0	0	0	1	4	1	0	0	0	0	0	0	0	0	0
PMH	0	0	0	0	0	0	0	0	0	0	0	0	0	0	0
PPL	0	8	33	13	102	64	1	0	0	0	1	19	56	38	11
PRMS	0	0	0	0	0	0	0	0	0	0	0	0	0	0	0
PVPL	0	2	9	9	63	29	1	1	0	0	0	8	29	22	2
SED	0	0	7	0	31	23	0	0	0	0	1	11	15	15	7
SEL	0	0	14	2	22	11	0	0	0	0	0	0	8	8	2
SPR	0	0	7	1	18	3	0	0	0	0	0	2	13	9	4
STX	0	0	2	2	1	1	0	0	0	0	0	0	1	1	0
SVES	0	0	0	0	1	0	0	0	0	0	0	0	0	0	0
THS	0	0	0	1	0	0	0	0	0	0	2	0	0	0	0
VOC	0	0	2	1	4	2	0	0	0	0	0	0	1	0	3
WIL	0	0	9	0	11	11	0	0	0	0	0	6	11	7	2
YAR	0	0	0	1	2	6	0	0	0	0	0	3	8	8	2
YCFLD	0	0	0	0	0	0	0	0	0	0	0	0	0	0	0
YCP	0	0	0	0	0	0	0	0	0	0	0	0	0	0	0
YCV	0	0	0	0	2	2	0	0	0	0	0	0	2	0	0
Total	0	20	163	55	520	312	2	1	0	0	8	94	277	222	53

STATISTICS: TRANSITS

ITEMS TRANSITED - DECEMBER 2025

CKO Lib → ↓ Item Lib	CSES	CTW	CVCL	CVHS	CVLAB	CVPL	CVUSD	DEL	DHL	ERAU	GES	GMMS	HES	HMS	JER
AJS	0	4	3	0	0	1	0	0	1	0	0	0	0	0	0
ASH	0	12	8	0	0	7	0	0	2	0	0	0	0	0	0
BAG	0	34	20	0	0	10	0	0	8	0	0	0	0	0	0
BCC	0	27	13	0	0	14	0	0	2	0	0	0	0	0	0
BEA	0	22	10	0	0	4	0	0	3	0	0	0	0	0	0
BMHS	0	0	0	0	0	0	0	0	0	0	0	0	0	0	0
BMMS	0	0	0	0	0	1	0	0	0	0	0	0	0	0	0
CANON	0	0	0	0	0	0	0	0	0	0	0	0	0	0	0
CJES	0	1	1	0	0	1	0	0	0	0	0	0	0	0	0
CLA	0	16	5	0	0	5	0	0	1	0	0	0	0	0	0
CON	0	9	4	0	0	4	0	0	3	0	0	0	0	0	0
COR	0	14	10	0	0	7	0	0	3	0	0	0	0	0	0
CRK	0	8	3	0	0	4	0	0	0	0	0	0	0	0	1
CSES	0	0	0	0	0	0	0	0	0	0	0	0	0	0	0
CTW	0	0	91	0	0	102	0	0	16	0	1	0	0	0	3
CVCL	0	51	0	0	0	35	0	0	10	0	0	0	0	0	1
CVHS	0	10	1	0	0	2	0	0	0	0	0	0	0	0	0
CVLAB	0	0	1	0	0	0	0	0	0	0	0	0	0	0	0
CVPL	0	117	62	0	0	0	0	0	7	0	3	0	0	1	4
CVUSD	0	2	0	0	0	3	0	0	0	0	3	0	0	1	0
DEL	0	0	0	0	0	1	0	0	0	0	0	0	0	0	0
DHL	0	9	10	0	0	3	0	0	0	0	0	0	0	0	1
ERAU	0	1	0	0	0	0	0	0	0	0	0	0	0	0	2
GES	0	4	1	0	0	1	0	0	0	0	0	0	0	0	0
GMMS	0	0	0	0	0	2	0	0	0	0	0	0	0	1	0
HES	0	0	0	0	0	1	0	0	0	0	1	0	0	0	0
HMS	0	1	0	0	0	0	0	1	0	0	0	0	0	0	0
JER	0	13	5	0	0	11	0	0	1	0	0	0	0	0	0
LES	0	5	1	0	0	2	0	0	0	0	0	0	0	1	0
LTS	0	0	2	0	0	4	0	0	0	0	1	0	0	1	0
MAY	0	22	14	0	0	15	0	0	8	0	0	0	0	0	0
MES	0	1	0	0	0	0	0	0	0	0	0	0	0	0	0
MUHS	0	0	1	0	0	2	0	0	0	0	0	0	0	0	0
MVES	0	1	0	0	0	0	0	0	0	0	0	0	0	0	0
PAUL	0	18	8	0	0	10	0	0	4	0	0	0	0	1	0
PCL	0	32	4	0	0	11	0	0	0	0	0	0	0	0	0
PHS	0	2	3	0	0	4	0	0	0	0	0	0	0	0	1
PMH	0	0	1	0	0	0	0	0	0	0	0	0	0	1	0
PPL	1	597	255	1	1	329	2	0	28	0	3	0	0	4	7
PRMS	0	0	0	0	0	0	0	0	0	0	1	0	0	0	0
PVPL	0	241	75	0	0	137	0	0	26	0	4	1	0	3	5
SED	0	299	60	0	0	71	1	0	10	0	1	0	0	0	6
SEL	0	18	7	0	0	5	0	0	3	0	0	0	0	0	0
SPR	0	13	5	0	0	6	0	0	4	0	0	0	0	0	0
STX	0	7	7	0	0	7	0	0	1	0	0	0	0	0	0
SVES	0	1	0	0	0	0	0	0	0	0	0	0	0	0	0
THS	0	1	1	0	0	0	0	0	0	0	0	0	0	0	0
VOC	0	24	9	0	0	7	0	0	4	0	0	0	0	0	1
WIL	0	6	10	0	0	3	0	0	4	0	0	0	0	0	0
YAR	0	13	5	0	0	5	0	0	1	0	0	0	0	0	0
YCFLD	0	0	0	1	0	0	0	0	0	0	0	0	0	0	0
YCP	0	0	0	0	0	0	0	0	0	0	0	0	0	0	0
YCV	0	8	2	0	0	2	0	0	0	1	0	0	0	0	0
Total	1	1,664	718	2	1	839	3	1	150	1	18	1	0	14	32

STATISTICS: TRANSITS

ITEMS TRANSITED - DECEMBER 2025

CKO Lib → ↓ Item Lib	LES	LTS	LVES	MAY	MES	MUHS	MVES	PAUL	PCL	PCM	PHS	PMH	PPL	PRMS	PVPL	PVA2
AJS	0	0	0	0	0	0	0	0	0	0	0	0	6	0	9	3
ASH	0	0	0	4	0	0	0	10	0	0	0	0	41	0	25	6
BAG	0	0	0	6	0	0	0	14	0	0	0	0	125	0	56	18
BCC	0	0	0	6	0	0	0	18	0	0	0	0	87	0	49	7
BEA	0	0	0	9	0	0	0	12	0	0	0	0	69	0	34	8
BMHS	0	0	0	0	0	0	0	0	0	0	0	0	2	0	2	0
BMMS	0	0	0	0	0	0	0	0	0	0	0	0	2	0	0	0
CANON	0	0	0	0	0	0	0	0	0	0	0	0	4	0	2	0
CJES	0	0	0	0	0	0	0	1	0	0	0	0	4	0	4	0
CLA	0	0	0	3	0	0	0	7	0	0	0	0	60	0	35	7
CON	0	0	0	1	0	0	0	7	0	0	0	0	26	0	23	2
COR	0	0	0	4	0	0	0	11	0	0	0	0	61	0	39	5
CRK	0	0	0	1	0	0	0	5	0	0	0	0	22	0	8	4
CSES	0	0	0	0	0	0	0	0	0	0	0	0	2	0	0	0
CTW	0	0	0	7	0	0	0	13	2	0	0	0	753	0	485	82
CVCL	0	0	0	3	0	0	0	4	1	0	0	0	207	0	106	23
CVHS	0	0	0	2	0	0	0	1	0	0	0	0	14	0	13	1
CVLAB	0	0	0	1	0	0	0	1	0	0	0	0	4	0	1	1
CVPL	0	0	0	8	0	0	0	29	0	0	0	0	386	0	266	72
CVUSD	0	0	0	0	0	0	0	1	0	0	0	0	17	0	6	2
DEL	0	0	0	1	0	0	0	0	0	0	0	0	5	0	4	0
DHL	0	0	0	4	0	0	0	9	0	0	0	0	30	0	22	6
ERAU	0	0	0	0	0	0	0	0	0	0	0	0	5	0	1	0
GES	0	0	0	0	0	0	0	0	0	0	0	0	5	0	7	2
GMMS	0	0	0	0	0	0	0	0	0	0	0	0	4	0	3	1
HES	0	0	0	0	0	0	0	0	0	0	0	0	3	0	2	1
HMS	0	0	0	0	0	0	0	0	0	0	0	0	5	0	0	0
JER	0	0	0	1	0	0	0	4	0	0	0	0	64	0	14	5
LES	0	0	0	0	0	0	0	1	0	0	0	0	15	0	10	1
LTS	0	0	0	0	0	0	0	1	0	0	0	0	17	0	13	2
MAY	0	0	0	0	0	0	0	13	1	0	0	0	67	0	50	9
MES	0	0	0	0	0	0	0	0	0	0	0	0	1	0	4	1
MUHS	0	0	0	0	0	0	0	0	0	0	0	0	10	0	9	0
MVES	0	0	0	0	0	0	0	0	0	0	0	0	6	0	4	3
PAUL	0	0	0	6	0	0	0	0	0	0	0	0	62	0	46	10
PCL	0	0	0	5	0	0	0	1	0	0	0	0	79	0	32	1
PHS	0	0	0	1	0	0	0	3	0	0	0	0	14	0	9	2
PMH	0	0	0	0	0	0	0	1	0	0	0	0	1	0	1	0
PPL	0	0	0	29	2	0	0	65	12	0	0	0	0	0	1,210	196
PRMS	0	0	0	0	0	0	0	0	0	0	0	0	0	0	0	0
PVPL	0	0	0	6	1	0	0	34	3	0	0	0	1,069	1	0	315
SED	0	0	0	6	0	0	0	14	2	0	0	0	670	0	345	61
SEL	0	0	0	1	0	0	0	5	0	0	0	0	52	0	30	5
SPR	0	0	0	5	0	0	0	9	1	0	0	0	41	0	35	15
STX	0	0	0	0	0	0	0	0	0	0	0	0	20	0	9	2
SVES	0	0	0	1	0	0	0	0	0	0	0	0	3	0	0	0
THS	0	0	0	0	0	0	0	0	0	0	0	0	1	0	0	0
VOC	0	0	0	1	0	0	0	1	0	0	0	0	64	0	46	6
WIL	0	0	0	4	0	0	0	13	0	0	0	0	49	0	27	4
YAR	0	0	0	2	0	0	0	3	0	0	0	0	39	0	27	0
YCFLD	0	0	0	0	0	0	0	1	0	0	0	0	0	0	0	0
YCP	0	0	0	0	0	0	0	0	0	0	0	0	0	0	1	0
YCV	0	0	0	0	0	0	0	0	0	0	0	0	23	0	9	1
Total	0	0	0	128	3	0	0	312	22	0	0	0	4,316	1	3,133	890

STATISTICS: TRANSITS

ITEMS TRANSITED - DECEMBER 2025

CKO Lib → ↓ Item Lib	SED	SEL	SPR	STX	SVES	THS	VOC	WIL	YAR	YCFLD	YCP	YCP2	YCV	YCV2	YLN	Total
AJS	0	0	0	0	0	0	0	0	0	0	0	0	0	0	0	27
ASH	7	13	12	0	0	0	5	4	10	0	0	0	0	0	1	219
BAG	17	20	10	0	0	0	4	5	3	2	0	0	1	0	2	422
BCC	12	7	5	1	0	0	10	5	10	0	0	0	1	0	1	345
BEA	15	6	1	0	0	0	7	4	2	0	0	0	0	0	2	255
BMHS	1	0	0	0	0	0	1	0	0	0	0	0	0	0	0	9
BMMS	0	0	0	0	0	0	0	0	0	0	0	0	0	0	0	6
CANON	0	0	0	0	0	0	0	0	0	0	0	0	0	0	0	7
CJES	0	0	0	0	0	0	0	0	0	0	0	0	0	0	0	13
CLA	8	8	5	1	0	0	11	3	5	3	1	0	1	0	3	233
CON	5	3	6	0	0	0	3	1	3	0	0	0	0	0	1	145
COR	7	9	7	0	0	0	6	9	2	0	0	0	0	0	1	247
CRK	3	2	4	0	0	0	4	1	6	0	0	0	0	0	1	89
CSES	0	0	0	0	0	0	0	0	0	0	0	0	0	0	0	3
CTW	127	16	15	0	1	0	101	9	13	1	1	0	4	0	0	1,967
CVCL	29	4	7	0	0	1	13	5	6	0	0	0	2	0	0	548
CVHS	4	0	0	0	0	0	4	0	0	0	1	0	0	0	0	58
CVLAB	1	0	0	0	0	0	0	0	0	0	0	0	0	0	0	10
CVPL	59	13	11	0	0	1	44	4	6	0	0	0	1	0	0	1,161
CVUSD	1	0	1	0	0	0	0	0	0	0	0	0	0	0	0	40
DEL	0	0	0	0	0	1	0	0	0	0	0	0	0	0	0	13
DHL	4	3	7	0	0	0	9	4	0	0	0	0	0	0	0	162
ERAU	1	0	0	0	0	0	0	0	0	0	0	0	0	0	0	11
GES	0	0	0	0	0	0	0	0	0	0	0	0	0	0	0	21
GMMS	2	0	0	0	0	0	0	0	0	0	0	0	0	0	0	14
HES	1	0	0	0	0	0	0	0	0	0	0	0	0	0	0	11
HMS	1	0	0	0	0	0	0	0	0	0	0	0	0	0	0	11
JER	12	2	1	0	0	0	3	1	0	1	0	0	0	0	0	147
LES	0	0	1	0	0	0	0	0	0	0	0	0	0	0	0	37
LTS	2	0	0	0	0	0	0	0	0	0	0	0	0	0	0	47
MAY	11	9	4	0	0	0	8	8	6	0	1	0	0	0	4	319
MES	0	0	0	0	0	0	0	0	0	0	0	0	0	0	0	10
MUHS	0	0	0	0	0	0	0	0	0	0	0	0	0	0	0	24
MVES	1	0	0	0	0	0	0	0	0	0	0	0	0	0	0	15
PAUL	11	9	10	0	0	0	7	10	7	0	0	0	1	0	0	285
PCL	26	0	0	0	0	0	5	0	1	0	0	0	1	0	0	207
PHS	5	0	0	0	0	0	1	0	0	0	0	0	0	0	0	51
PMH	1	1	0	0	0	0	0	0	0	0	0	0	0	0	0	7
PPL	331	48	41	1	0	0	241	25	25	5	0	0	19	0	1	3,825
PRMS	0	0	0	0	0	0	0	0	0	0	0	0	0	0	0	1
PVPL	123	13	22	0	0	1	91	8	9	1	0	0	4	0	0	2,368
SED	0	11	10	0	1	1	310	9	6	0	0	0	4	0	0	2,008
SEL	6	0	14	0	0	0	0	5	9	2	0	0	0	0	2	231
SPR	3	10	0	0	0	0	3	12	6	0	0	0	0	0	0	225
STX	9	0	0	0	0	0	0	3	0	0	0	0	0	0	1	74
SVES	0	0	1	0	0	0	0	0	0	0	0	0	0	0	0	7
THS	0	0	0	0	0	0	0	0	0	0	0	0	0	0	0	6
VOC	83	0	0	0	0	0	0	1	0	0	0	0	0	0	0	260
WIL	10	2	9	0	0	0	4	0	6	0	1	0	0	0	0	209
YAR	9	2	4	0	0	1	6	3	0	0	0	0	1	0	1	152
YCFLD	0	0	0	0	0	0	0	0	0	0	0	0	0	0	0	2
YCP	0	0	0	0	0	0	0	0	0	0	0	0	0	0	0	1
YCV	5	0	0	0	0	0	0	0	0	0	0	0	0	0	0	57
Total	953	211	208	3	2	6	901	139	141	15	5	0	40	0	21	16,622

STATISTICS: DISCARDED & ADDED

Items added and discarded reflect their home library at the time the report ran.

DISCARDS - DECEMBER 2025	
Item Library	Number of Items
AFSD	13
AJS	74
ASH	43
BAG	560
BCC	64
BEA	92
BMHS	93
BMMS	10
CJES	103
CLA	14
CON	10
COR	42
CRK	9
CSES	51
CTW	749
CVCL	594
CVHS	68
CVLAB	3
CVPL	545
CVUSD	633
DEL	54
DHL	14
ERAU	3
GES	94
GMMS	59
HES	15
HMS	56
JER	93
LES	392
LTS	40
LVES	4
MAY	17
MES	20
MUHS	27
MVES	2
PAUL	10
PCL	86
PHS	54
PMH	17
PPL	1,166
PRMS	58
PVPL	976
SED	375
SEL	17
SPR	15
STX	5
SVES	9
THS	23
VOC	67
WIL	35
YAR	49
YCFLD	3
YCP	20
YCV	11
Total	7,656

ITEMS ADDED - DECEMBER 2025	
Items Added	Total Copies
AJS	84
ASH	48
BAG	54
BCC	46
BEA	79
BMHS	11
BMMS	35
BUSD	43
CANON	12
CJES	70
CLA	66
CON	50
COR	48
CRK	19
CSES	49
CTW	359
CVCL	133
CVHS	112
CVPL	323
CVUSD	128
DEL	183
DHL	44
GES	49
GMMS	1
HES	34
HMS	144
JER	6
LES	58
LTS	6
LVES	6
MAY	62
MES	25
MUHS	12
MVES	65
PAUL	82
PCL	4
PHS	24
PMH	22
PPL	3,115
PRMS	38
PVPL	1,265
SED	1,101
SEL	64
SPR	25
STX	25
SVES	12
THS	24
VOC	52
WIL	32
YAR	90
YCFLD	3
YCP	21
YCV	1
YLN	2
Total	8,466

TOTAL ITEMS - DECEMBER 2025	
Item Library	Total Copies
AFSD	4,614
AJS	12,543
ASH	5,994
BAG	13,271
BCC	12,156
BEA	10,897
BMHS	28,875
BMMS	7,191
BUSD	7,500
CANON	4,546
CJES	11,709
CLA	8,386
CON	6,612
COR	7,242
CRK	3,130
CSES	4,985
CTW	82,611
CVCL	25,999
CVHS	13,732
CVLAB	5,002
CVPL	57,335
CVUSD	11,597
DEL	10,173
DHL	4,651
ERAU	22,379
GES	12,826
GMMS	8,386
HES	7,003
HMS	13,007
JER	14,280
LAW	1,784
LES	12,193
LTS	13,981
LVES	9,036
MAY	10,848
MES	4,638
MUHS	5,324
MVES	10,444
PAUL	7,644
PCL	33,960
PHS	10,943
PMH	8,589
PPL	128,378
PRMS	5,781
PVPL	84,345
SED	53,061
SEL	7,075
SHM	8,124
SPR	5,336
STX	1,060
SVES	6,633
THS	11,292
VOC	4,935
VVAC	3,348
WIL	5,617
YAR	8,367
YAV	4,455
YCC	2,157
YCFLD	776
YCP	4,587
YCV	2,917
YLN	318
Total	916,578

STATISTICS: USERS

NEW USERS - DECEMBER 2025

User Library	Number of Users
AFSD	2
AJS	6
ASH	13
BAG	2
BCC	14
BEA	6
BMHS	5
BMMS	2
BUSD	4
CJES	1
CLA	3
CON	3
COR	8
CRK	1
CTW	110
CVCL	46
CVHS	3
CVPL	59
CVUSD	9
DEL	4
DHL	15
ERAU	2
GES	3
GMMS	6
HMS	2
JER	1
LES	18
LTS	1
LVES	2
MAY	8
MUHS	1
MVES	4
PAUL	7
PCL	101
PHS	2
PMH	12
PPL	288
PRMS	5
PVPL	196
SED	73
SEL	3
SVES	1
THS	4
VOC	5
WIL	1
YCP	4
Total	1066

TOTAL USERS - DECEMBER 2025

User Library	Number of Users
AFSD	342
AJS	518
ASH	741
BAG	599
BCC	795
BEA	794
BMHS	1,748
BMMS	489
BUSD	516
CANON	157
CJES	537
CLA	456
CON	573
COR	753
CRK	104
CSES	578
CTW	9,734
CVCL	4,046
CVHS	757
CVLAB	1
CVPL	4,755
CVUSD	1,929
DEL	540
DHL	561
ERAU	4,228
GES	503
GMMS	573
HES	340
HMS	573
JER	132
LAW	1
LES	380
LTS	850
LVES	316
MAY	519
MES	452
MUHS	1,299
MVES	427
PAUL	758
PCL	1,161
PHS	1,627
PMH	577
PPL	24,109
PRMS	569
PVA2	1
PVPL	17,247
SED	6,407
SEL	577
SPR	329
SVES	47
THS	466
VOC	1,404
WIL	181
YAR	517
YCFLD	14
YCP	789
YCV	271
YLN	12
Total	99,679

STATISTICS: BILLS

PATRON BILLS - DECEMBER 2025

Bill Library	Number of Bills	Billed Amount	Amount Paid	Number of Payments
AFSD	0	\$0.00	\$0.00	0
AJS	0	\$0.00	\$27.00	2
ASH	0	\$0.00	\$0.00	0
BAG	0	\$0.00	\$0.00	0
BCC	0	\$0.00	\$0.00	0
BEA	0	\$0.00	\$7.10	2
BMHS	0	\$0.00	\$0.00	0
BMMS	0	\$0.00	\$0.00	0
BUSD	0	\$0.00	\$0.00	0
CANON	0	\$0.00	\$0.00	0
CJES	0	\$0.00	\$0.00	0
CLA	0	\$0.00	\$0.00	0
CON	0	\$0.00	\$0.00	0
COR	4	\$61.00	\$0.00	0
CRK	0	\$0.00	\$0.00	0
CSES	0	\$0.00	\$53.48	3
CTW	29	\$101.00	\$128.94	30
CVCL	2	\$30.00	\$26.94	2
CVHS	0	\$0.00	\$0.00	0
CVLAB	0	\$0.00	\$0.00	0
CVPL	2	\$35.00	\$284.00	97
CVUSD	1	\$31.00	\$0.00	0
DEL	1	\$7.99	\$0.00	0
DHL	0	\$0.00	\$0.00	0
ERAU	0	\$0.00	\$0.00	0
GES	0	\$0.00	\$0.00	0
GMMS	0	\$0.00	\$0.00	0
HES	0	\$0.00	\$0.00	0
HMS	0	\$0.00	\$0.00	0
JER	0	\$0.00	\$0.00	0
LAW	0	\$0.00	\$0.00	0
LES	0	\$0.00	\$0.00	0
LTS	1	\$7.00	\$32.00	3
LVES	0	\$0.00	\$0.00	0
MAY	12	\$303.11	\$0.00	0
MES	0	\$0.00	\$0.00	0
MUHS	0	\$0.00	\$0.00	0
MVES	0	\$0.00	\$0.00	0
PAUL	2	\$20.00	\$26.10	6
PCL	0	\$0.00	\$12.50	4
PCM	0	\$0.00	\$0.00	0
PHS	0	\$0.00	\$0.00	0
PMH	0	\$0.00	\$0.00	0
PPL	28	\$494.06	\$771.79	54
PRMS	0	\$0.00	\$0.00	0
PVA2	0	\$0.00	\$0.00	0
PVPL	16	\$295.95	\$189.07	22
SED	20	\$475.00	\$291.00	24
SEL	0	\$0.00	\$2.10	1
SHM	0	\$0.00	\$0.00	0
SPR	0	\$0.00	\$13.00	1
STX	0	\$0.00	\$0.00	0
SVES	0	\$0.00	\$0.00	0
TECC	0	\$0.00	\$0.00	0
THS	0	\$0.00	\$0.00	0

VOC	4	\$96.00	\$107.00	4
VVAC	0	\$0.00	\$0.00	0
WIL	1	\$17.00	\$17.00	1
YAR	0	\$0.00	\$0.00	0
YAV	0	\$0.00	\$0.00	0
YCC	0	\$0.00	\$0.00	0
YCFLD	0	\$0.00	\$0.00	0
YCP	0	\$0.00	\$0.00	0
YCP2	0	\$0.00	\$0.00	0
YCV	0	\$0.00	\$52.00	8
YCV2	0	\$0.00	\$0.00	0
YLN	0	\$0.00	\$0.00	0
YCV2	0	\$0.00	\$0.00	0
YLN	0	\$0.00	\$0.00	0

STATISTICS: CIRCULATION

CIRCULATION - DECEMBER 2025

Station Library	Check Outs	Renewals	In House Use	Check Ins
AFSD	13	0	0	27
AJS	855	26	0	703
ASH	690	344	0	772
BAG	372	284	5	443
BCC	941	550	0	1,015
BEA	1,003	508	0	1,087
BMHS	10	54	0	81
BMMS	41	1	0	88
BUSD	167	423	0	351
CANON	0	0	0	0
CJES	1,046	289	0	1,078
CLA	213	106	0	233
CON	698	264	12	660
COR	638	287	0	682
CRK	189	151	30	157
CSES	132	2	0	406
CTW	7,734	4,326	0	8,016
CVCL	3,171	1,500	0	3,263
CVHS	221	7	0	73
CVLAB	348	18	0	589
CVPL	4,028	2,516	0	4,223
CVUSD	664	60	0	612
DEL	941	116	0	1,289
DHL	307	222	0	364
ERAU	23	156	0	121
GES	408	14	0	501
GMMS	66	3	0	99
HES	203	9	0	231
HMS	144	17	0	123
JER	73	61	0	61
LES	817	32	0	915
LTS	835	31	0	1,219
LVES	276	27	0	583
MAY	574	253	0	526
MES	208	56	0	361
MUHS	8	17	0	10
MVES	461	49	0	658
PAUL	703	621	0	872
PCL	65	51	0	85
PHS	26	6	0	42
PMH	2	9	0	19
PPL	25,912	15,967	208	25,822
PRMS	250	186	0	258
PVA2	893	377	0	1
PVPL	16,338	10,745	490	17,826
SED	5,696	3,183	45	5,543
SEL	1,104	317	3	1,143
SPR	356	119	0	364
STX	3	0	0	2
SVES	3	1	0	6
THS	277	5	0	324
VOC	1,298	667	17	1,502
WIL	339	174	0	563

YAR	273	240	0	244
YCFLD	15	4	0	20
YCP	8	67	0	52
YCV	54	96	0	75
YLN	22	23	0	65
Total	82,155	45,637	810	86,448

STATISTICS: OPAC

Library	Total
Default	23,765
CTW	9,593
CVCL	7,721
CVPL	105,619
Elementary	5,663
ERAU	2,803
High	102
JER	88
Middle	3,844
PCL	5,295
PPL	259,814
PVPL	66,957
SED	23,479
YCFLD	40,081
YCP	7,599

STATISTICS: OVERDRIVE

TOTAL UNIQUE USERS: 7,432			
TOTAL CHECKOUTS: 35,012			
TOTAL HOLDS: 11,444			
CHECKOUTS BY ITEM TYPE		HOLDS BY ITEM TYPE	
Audiobook	16,044	Audiobook	6,444
Ebook	12,450	Ebook	5,000
Magazine	6,518		

BRANCH	CHECKOUTS
YLN-Prescott	14219
YLN-Prescott Valley	6729
YLN-Cottonwood	3474
YLN-Sedona	2942
YLN-Camp Verde	1451
YLN-Chino Valley	1232
YLN-Sedona - Village of Oak Creek	1099
YLN-Clark Memorial	285
YLN-Black Canyon City	246
YLN-Dewey-Humboldt Town	206
YLN-Congress	205
YLN-Yavapai College	156
YLN-Paulden	153
YLN-Yarnell	147
YLN-Embry-Riddle	137
YLN-Mayer	127
YLN-Beaver Creek	119
YLN-Cordes Lakes	115
YLN-Bagdad	105
YLN-Seligman	84
YLN-Ash Fork	69
YLN-Prescott College	65
YLN-Wilhoit	39
YLN-Yavapai Schools	33
YLN-Spring Valley	28
YLN-Jerome	24
YLN-Crown King	5
YLN-Yavapai County Free District	1

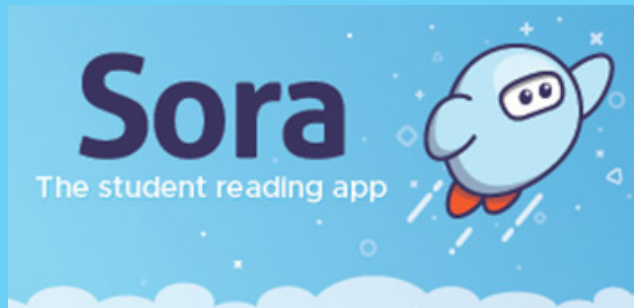
STATISTICS: OVERDRIVE RLA

CONSORTIUM (CHECKOUTS FROM YLN COLLECTION)	Total	Audiobook	eBook
Apache County Library District	58	46	12
Cochise County Library District	125	93	32
Flagstaff City-Coconino County Public Library	255	172	83
Gila County Library District	40	32	8
Little Libraries That Could	10	7	3
Navajo County Library District	141	73	68
Pima County Public Library	622	338	284
Southwest Valley Library Consortium	85	45	40
Tempe Public Library	124	61	63
Yuma County Library District	57	32	25
Grand Total	1,517	899	618

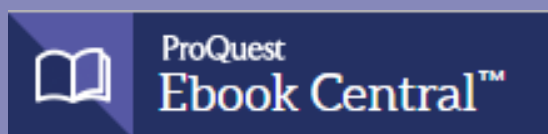
Yavapai Patron Checkouts from other RLA Systems: 3,853



STATISTICS: ONLINE USAGE



Books Opened	1489
Time Read (hours)	230.41
Avg Time/Book by Format (min)	36.99
Avg Time/Session (min)	6.85
Avg Time/User (min)	23.91
Unique Users	346



Library	Total Titles Used	Total Unique Users	Total Book Downloads	Total Chapter Downloads	Top 5 Most Used Subjects
TOTAL	117	84	15	18	Medicine, History, Health, Literature, Philosophy



Logins	1,468
Holds Placed	4,094

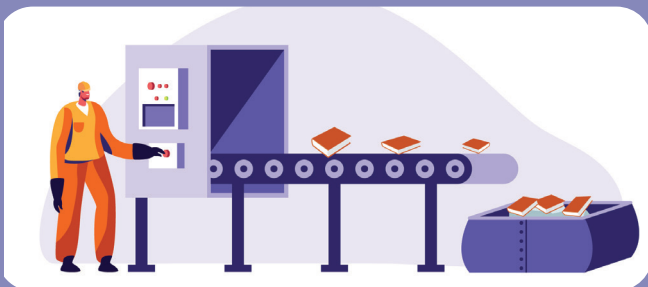
(loginToLiDA/placeHold)

STATISTICS: ONLINE USAGE



*Events for Everyone...
in Yavapai County!*

Month	# Programs Happening	# of Users Visiting
December	605	14000



AMH Sorter [Ethel]	
Items/Month	49,147



**MANGO
LANGUAGES**

TOTAL SESSIONS	317
Mobile Sessions	154
Web Sessions	163
Average Learning Time	9:42
Total Learning Time	47:43:14
Most Uses: Spanish, Latin American	93
Most Time Spent: Spanish, Latin American	15:53:47

STATISTICS - MESSAGEBEE NOTICES

	Sent	Delivered	Failed	Opt Out
1st Overdue SMS				
12/1/2025	196	190	6	0
12/8/2025	221	215	6	0
12/15/2025	185	182	3	0
12/22/2025	180	169	11	0
12/29/2025	85	83	2	0
Autorenewal Success SMS				
12/1/2025	815	787	27	1
12/8/2025	872	841	28	3
12/15/2025	631	612	16	3
12/22/2025	850	811	37	2
12/29/2025	442	425	15	2
Hold Pickup SMS				
12/1/2025	1198	1179	16	2
12/8/2025	996	975	19	2
12/15/2025	955	931	21	3
12/22/2025	781	769	11	1
12/29/2025	546	536	9	1

STATISTICS - MESSAGEBEE NOTICES

	Sent	Delivered	Failed
1st Overdue Phone			
12/1/2025	62	57	5
12/8/2025	50	49	1
12/15/2025	56	52	4
12/22/2025	46	42	4
12/29/2025	25	23	2
Final Overdue Phone			
12/1/2025	10	9	1
12/8/2025	4	4	0
12/15/2025	6	6	0
12/22/2025	7	7	0
12/29/2025	2	1	1
Hold Pickup Phone			
12/1/2025	302	289	12
12/8/2025	268	260	8
12/15/2025	266	256	10
12/22/2025	192	180	11
12/29/2025	169	163	6

STATISTICS - MESSAGEBEE NOTICES

	Sent	Delivered	Failed	Opt Out	Clicked	Opened
Receipt Email						
12/1/2025	300	297	3	0	2	196
12/8/2025	225	223	2	0	0	147
12/15/2025	267	263	4	0	0	189
12/22/2025	175	175	0	0	1	127
12/29/2025	134	132	2	0	0	90
Hold Pickup Email						
12/1/2025	2865	2777	79	9	45	2034
12/8/2025	2537	2470	55	12	66	1808
12/15/2025	2346	2278	53	15	43	1686
12/22/2025	1974	1934	27	13	50	1473
12/29/2025	1362	1328	29	5	26	984
1st Overdue Email						
12/1/2025	1222	829	392	0	14	467
12/8/2025	922	522	399	1	11	324
12/15/2025	1000	688	311	1	5	351
12/22/2025	420	401	19	0	16	258
12/29/2025	145	140	4	1	4	93
Final Overdue Email						
12/1/2025	134	105	29	0	3	68
12/8/2025	119	82	36	1	0	51
12/15/2025	181	120	61	0	1	66
12/22/2025	70	65	5	0	1	39
12/29/2025	50	45	5	0	2	24
Bill Email						
12/1/2025	205	132	73	0	2	66
12/8/2025	250	85	165	0	3	44
12/15/2025	159	120	39	0	0	56
12/22/2025	282	138	144	0	1	78
12/29/2025	87	44	43	0	0	25
Auto Renewal Email						
12/1/2025	2499	2374	123	1	16	1565
12/8/2025	2674	2555	116	3	8	1685
12/15/2025	1942	1848	91	3	5	1247
12/22/2025	2479	2374	101	4	12	1600
12/29/2025	1221	1147	73	1	8	783